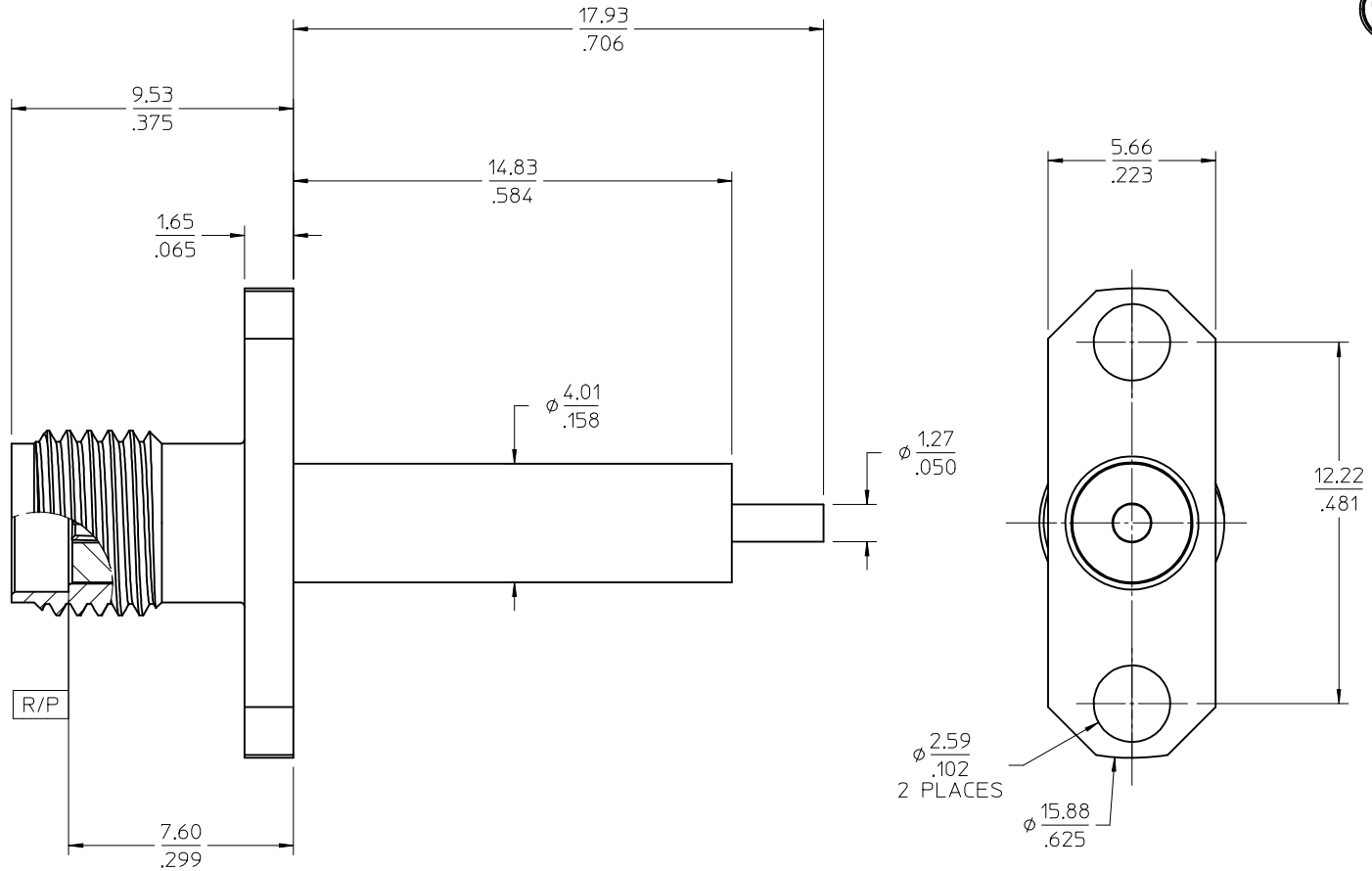
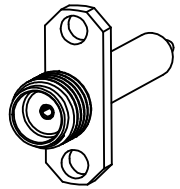


MATERIALS AND FINISHES

BODY: STAINLESS STEEL  
PLATED SEE TABLE

CONTACT: BERYLLIUM COPPER  
PLATED GOLD 30 MICRINCHES

INSULATOR: TEFLON



73251-0422	10 u-IN GOLD	73251-0422 BY TRAY (40 CAV.)
73251-0421	PASSVATED	73251-0420 BY TRAY (20 CAV.)
73251-0420	PASSVATED	73251-0420 BY TRAY (40 CAV.)
PART NO.	FINISH	PACKAGING

PS-89675-2820	ELEC/MECH PERFORMANCE
MIL-STD-348A, FIG. 310.2	INTERFACE
SPECIFICATION	DESCRIPTION

CHG: UPDATED PACKAGING OF -0420 & -0422 PER RF16-E077  
 IEC NO: URF2016-0743  
 DRWNR:YEH  
 CHKD:  
 APPR:YCHENG  
 2016/05/02  
 2016/05/05  
 A4

REV	DESCRIPTION
▽=0	
▽=0	
▽=0	

GENERAL TOLERANCES (UNLESS SPECIFIED)	
4 PLACES	± .005
3 PLACES	± .004
2 PLACES	± .003
1 PLACE	± .002
0 PLACE	± .001
ANGULAR ± 2°	
DRAFT WHERE APPLICABLE MUST REMAIN WITHIN DIMENSIONS	

DIMENSION STYLE	
MM/IN	
DRAWN BY	DATE
TEF	2001/06/22
CHECKED BY	DATE
SSS	2001/06/22
APPROVED BY	DATE
GMH	2001/06/22
MATERIAL NO.	
SEE TABLE	
SIZE	C

SCALE	8:1
DESIGN UNITS	METRIC
THIRD ANGLE PROJECTION	
TITLE	
SMA JACK CANDLESTICK RECEPTACLE 2 HOLE FLANGE SMA-JR	
molex	
DOCUMENT NO.	SD-73251-042
SHEET NO.	1 OF 1
THIS DRAWING CONTAINS INFORMATION THAT IS PROPRIETARY TO MOLEX INCORPORATED AND SHOULD NOT BE USED WITHOUT WRITTEN PERMISSION	