

### FEATURES

- Attenuation range:** 1 dB LSB steps to 31 dB
- Insertion loss:** 6 dB typical at 33 GHz
- Attenuation accuracy:**  $\pm 0.5$  dB typical
- Input linearity**
  - 0.1 dB compression (P0.1dB):** 24 dBm typical
  - Third-order intercept (IP3):** 40 dBm typical
- Power handling:** 27 dBm
- Dual-supply operation:**  $\pm 5$  V
- CMOS-/TTL-compatible parallel control**
- 24-lead, 4 mm  $\times$  4 mm LFCSP package**

### APPLICATIONS

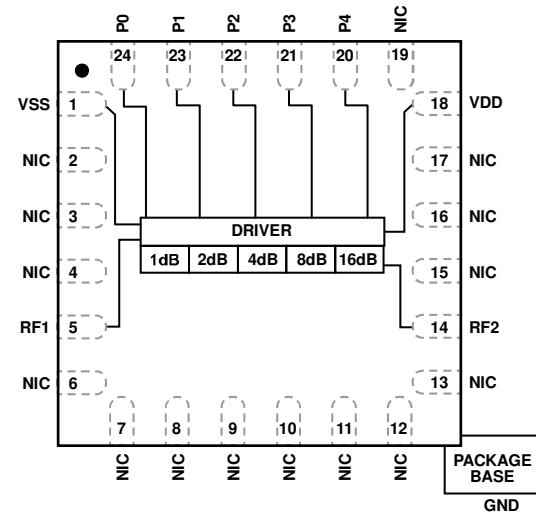
- Test instrumentation**
- Microwave radios and very small aperture terminals (VSATs)**
- Military radios, radars, electronic counter measures (ECMs)**
- Broadband telecommunications systems**

### GENERAL DESCRIPTION

The HMC939ALP4E is a 5-bit digital attenuator with a 31 dB attenuation control range in 1 dB steps.

The HMC939ALP4E offers optimum insertion loss, attenuation accuracy, and input linearity over the specified frequency range from 100 MHz to 33 GHz.

### FUNCTIONAL BLOCK DIAGRAM



NIC = NO INTERNAL CONNECTION

Figure 1.

The HMC939ALP4E requires dual supply voltages,  $VDD = +5$  V and  $VSS = -5$  V, and provides CMOS-/TTL-compatible parallel control interface by incorporating an on-chip driver.

The HMC939ALP4E comes in a RoHS compliant, compact, 4 mm  $\times$  4 mm LFCSP package. See [HMC939A-DIE](#) for the die version of HMC939ALP4E.

**TABLE OF CONTENTS**

Features ..... 1  
 Applications..... 1  
 Functional Block Diagram ..... 1  
 General Description ..... 1  
 Revision History ..... 2  
 Specifications..... 3  
 Absolute Maximum Ratings..... 4  
     Thermal Resistance ..... 4  
     ESD Caution..... 4  
 Pin Configuration and Function Descriptions..... 5  
     Interface Schematics..... 5  
 Typical Performance Characteristics ..... 6

Insertion Loss, Return Loss, State Error, Step Error, and  
 Relative Phase .....6  
 Input Power Compression and Third-Order Intercept.....8  
 Theory of Operation .....9  
     Power Supply.....9  
     RF Input and Output .....9  
 Applications Information ..... 10  
     Evaluation Board ..... 10  
 Outline Dimensions ..... 11  
     Ordering Guide ..... 11

**REVISION HISTORY**

**5/2018—Rev. C to Rev. D**

Changed + 27 V to 27 dBm in Rating Column, Table 2..... 4  
 Change to Ordering Guide..... 11

**8/2017—Rev. 02.0417 to Rev. C**

This Hittite Microwave Products data sheet has been reformatted to meet the styles and standards of Analog Devices, Inc.

Changed N/C to NIC ..... Throughout  
 Changes to Features Section, Applications Section, and General  
 Description Section ..... 1  
 Changes to Table 1 ..... 3  
 Changes to Table 2 and Added Thermal Resistance Section ..... 4  
 Added Table 3; Renumbered Sequentially ..... 4  
 Changes to Table 4 ..... 5  
 Changes to Figure 5 Caption through Figure 10 Caption ..... 6  
 Changes to Figure 11 Caption through Figure 14 Caption ..... 7  
 Changes to Figure 15 Caption through Figure 20 Caption ..... 8

Added Theory of Operation Section, RF Input and Output Section,  
 and Power Supply Section ..... 9  
 Changes to Figure 22 ..... 10  
 Changes to Ordering Guide ..... 11

## SPECIFICATIONS

VDD = 5 V, VSS = -5 V, VCTL = 0 V or VDD, TCASE = 25°C, 50 Ω system, unless otherwise noted.

Table 1.

| Parameter                 | Symbol                                | Test Conditions/Comments  | Min                              | Typ  | Max                              | Unit    |
|---------------------------|---------------------------------------|---|----------------------------------|------|----------------------------------|---------|
| FREQUENCY RANGE           |                                       |   | 0.1                              |      | 33                               | GHz     |
| INSERTION LOSS            |                                       | 0.1 GHz to 18 GHz   |                                  | 4.5  | 5.5                              | dB      |
|                           |                                       | 18 GHz to 26.5 GHz  |                                  | 5.5  | 7.0                              | dB      |
|                           |                                       | 26.5 GHz to 33 GHz  |                                  | 6.0  | 8.0                              | dB      |
| ATTENUATION               |                                       |   |                                  |      |                                  |         |
| Range                     |                                       | Between minimum and maximum attenuation states, 0.1 GHz to 33 GHz |                                  | 31   |                                  | dB      |
| Step Size                 |                                       | Between any successive attenuation states, 0.1 GHz to 33 GHz      |                                  | 1    |                                  | dB      |
| Step Error                |                                       | Between any successive attenuation states, 0.1 GHz to 33 GHz      |                                  | 0.5  |                                  | dB      |
| State Error               |                                       | Referenced to insertion loss state                                |                                  |      |                                  |         |
|                           |                                       | 1 dB to 15 dB attenuation states, 0.1 GHz to 33 GHz               | -(0.5 + 5% of attenuation state) |      | +(0.5 + 5% of attenuation state) | dB      |
|                           |                                       | 16 dB to 31 dB attenuation states, 0.1 GHz to 20 GHz              | -(0.5 + 5% of attenuation state) |      | +(0.5 + 5% of attenuation state) | dB      |
|                           |                                       | 16 dB to 31 dB attenuation states, 20 GHz to 33 GHz               | -(0.6 + 8% of attenuation state) |      | +(0.6 + 8% of attenuation state) | dB      |
| RETURN LOSS               |                                       | RF1 and RF2 pins, all attenuation states, 0.1 GHz to 33 GHz       |                                  | 10   |                                  | dB      |
| RELATIVE PHASE            |                                       | Between minimum and maximum attenuation states                    |                                  |      |                                  |         |
|                           |                                       | 0.1 GHz to 18 GHz   |                                  | 45   |                                  | Degrees |
|                           |                                       | 18 GHz to 26.5 GHz  |                                  | 60   |                                  | Degrees |
|                           |                                       | 26.5 GHz to 33 GHz  |                                  | 80   |                                  | Degrees |
| SWITCHING CHARACTERISTICS |                                       | Between all attenuation states                                    |                                  |      |                                  |         |
| Rise and Fall Time        | t <sub>RISE</sub> , t <sub>FALL</sub> | 10% to 90% of RF output   |                                  | 45   |                                  | ns      |
| On and Off Time           | t <sub>ON</sub> , t <sub>OFF</sub>    | 50% V <sub>CTL</sub> to 90% of RF output                          |                                  | 60   |                                  | ns      |
| INPUT LINEARITY           |                                       | All attenuation states  |                                  |      |                                  |         |
| 0.1 dB Compression        | P0.1dB                                | 0.1 GHz to 0.5 GHz  |                                  | 20   |                                  | dBm     |
|                           |                                       | 0.5 GHz to 33 GHz   |                                  | 24   |                                  | dBm     |
| Third-Order Intercept     | IP3                                   | 8 dBm per tone, 1 MHz spacing                                     |                                  |      |                                  |         |
|                           |                                       | 0.1 GHz to 0.5 GHz  |                                  | 43   |                                  | dBm     |
|                           |                                       | 0.5 GHz to 33 GHz   |                                  | 40   |                                  | dBm     |
| SUPPLY CURRENT            |                                       |   |                                  |      |                                  |         |
| Positive                  | I <sub>DD</sub>                       |   | 2.5                              | 4.5  | 6.5                              | mA      |
| Negative                  | I <sub>SS</sub>                       |   | -7.0                             | -5.5 | -3.0                             | mA      |
| DIGITAL CONTROL INPUTS    |                                       | P0 to P5 pins   |                                  |      |                                  |         |
| Voltage                   |                                       |   |                                  |      |                                  |         |
| Low                       | V <sub>INL</sub>                      |   | 0                                |      | 0.8                              | V       |
| High                      | V <sub>INH</sub>                      |   | 2.0                              |      | 5.0                              | V       |
| Current                   |                                       |   |                                  |      |                                  |         |
| Low and High              | I <sub>INL</sub> , I <sub>INH</sub>   |   |                                  | <1   |                                  | μA      |

## ABSOLUTE MAXIMUM RATINGS

Table 2.

| Parameter  | Rating           |
|--|------------------|
| Supply Voltage   |                  |
| Positive   | +7 V             |
| Negative   | -7 V             |
| Digital Control Input Voltage  | $V_{DD} + 0.5 V$ |
| RF Input Power (All Attenuation States,<br>f = 0.1 GHz to 33 GHz, $T_{CASE} = 85^{\circ}C$ ) | 27 dBm           |
| Continuous Power Dissipation, $P_{DISS}$<br>( $T_{CASE} = 85^{\circ}C$ )                     | 0.453 W          |
| Temperature  |                  |
| Junction, $T_J$  | 150°C            |
| Storage  | -65°C to +150°C  |
| Reflow <sup>1</sup> ((Moisture Sensitivity Level 3<br>(MSL3) Rating)                         | 260°C            |
| ESD Sensitivity  |                  |
| Human Body Model (HBM)   | 250 V (Class 1A) |

<sup>1</sup> See the Ordering Guide for more information.

Stresses at or above those listed under Absolute Maximum Ratings may cause permanent damage to the product. This is a stress rating only; functional operation of the product at these or any other conditions above those indicated in the operational section of this specification is not implied. Operation beyond the maximum operating conditions for extended periods may affect product reliability.

Only one absolute maximum rating can be applied at any one time.

## THERMAL RESISTANCE

Thermal performance is directly linked to printed circuit board (PCB) design and operating environment. Careful attention to PCB thermal design is required.

$\theta_{JC}$  is the junction to case thermal resistance.

Table 3. Thermal Resistance

| Package Type          | $\theta_{JC}$      | Unit |
|-----------------------|--------------------|------|
| CP-24-16 <sup>1</sup> | 143.5 <sup>2</sup> | °C/W |

<sup>1</sup> Thermal impedance simulated values are based on a JEDEC 2S2P thermal test board with nine thermal vias. See JEDEC JESD51.

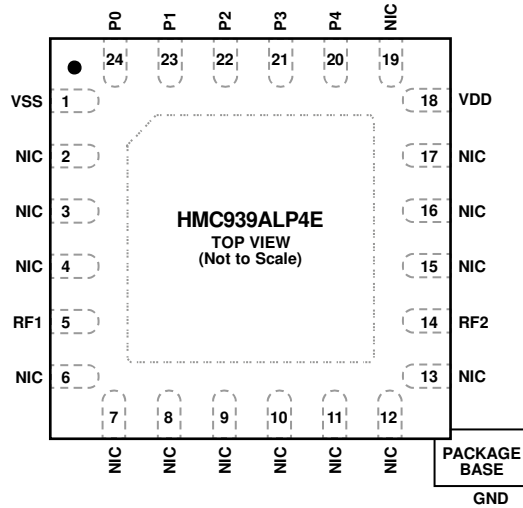
<sup>2</sup> The device is set to maximum attenuation state.

## ESD CAUTION



**ESD (electrostatic discharge) sensitive device.** Charged devices and circuit boards can discharge without detection. Although this product features patented or proprietary protection circuitry, damage may occur on devices subjected to high energy ESD. Therefore, proper ESD precautions should be taken to avoid performance degradation or loss of functionality.

# PIN CONFIGURATION AND FUNCTION DESCRIPTIONS



NOTES  
 1. NIC = NO INTERNAL CONNECTION  
 2. THE EXPOSED PAD MUST BE CONNECTED TO GROUND FOR PROPER OPERATION.

13820-002

Figure 2. Pin Configuration

Table 4. Pin Function Descriptions

| Pin No.                       | Mnemonic | Description  |
|-------------------------------|----------|--|
| 1                             | VSS      | Negative Supply Voltage.   |
| 2 to 4, 6 to 13, 15 to 17, 19 | NIC      | These pins are not internally connected; however, all data shown herein was measured when these pins connected to the RF/DC ground of evaluation board.  |
| 5                             | RF1      | This pin can be used as RF input or output of attenuator. This pin is dc-coupled to 0 V and ac matched to 50 Ω. No dc blocking capacitor is necessary when the RF line potential is equal to 0 V dc.   |
| 14                            | RF2      | This pin can be used as RF input or output of attenuator. This pin is dc-coupled to 0 V and ac matched to 50 Ω. No dc blocking capacitor is necessary when the RF line potential is equal to 0 V dc.   |
| 18                            | VDD      | Positive Supply Voltage.   |
| 20 to 24                      | P4 to P0 | Parallel Control Voltage Inputs. These pins select the required attenuation (see Table 6). There is no internal pull-up or pull-down resistor on these pins; therefore, they must always be kept at a valid logic level (VIH or VIL) and not be left floating. |
|                               | EPAD     | Exposed Pad. The exposed pad must be connected to ground for proper operation.   |

## INTERFACE SCHEMATICS

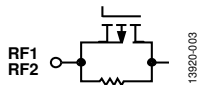


Figure 3. RF1, RF2 Interface Schematic

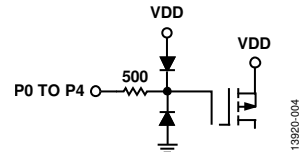


Figure 4. Digital Control Input Interface

# TYPICAL PERFORMANCE CHARACTERISTICS

## INSERTION LOSS, RETURN LOSS, STATE ERROR, STEP ERROR, AND RELATIVE PHASE

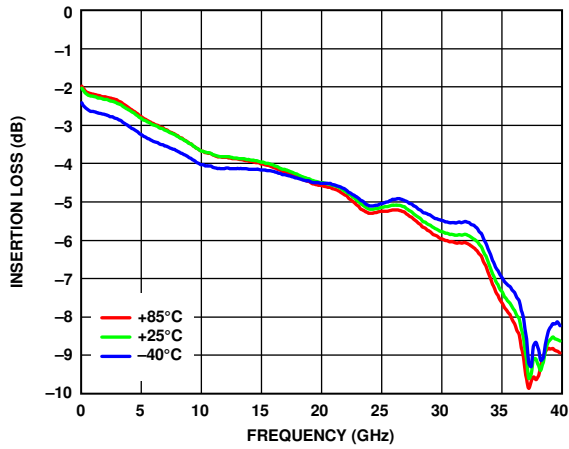


Figure 5. Insertion Loss vs. Frequency over Temperature

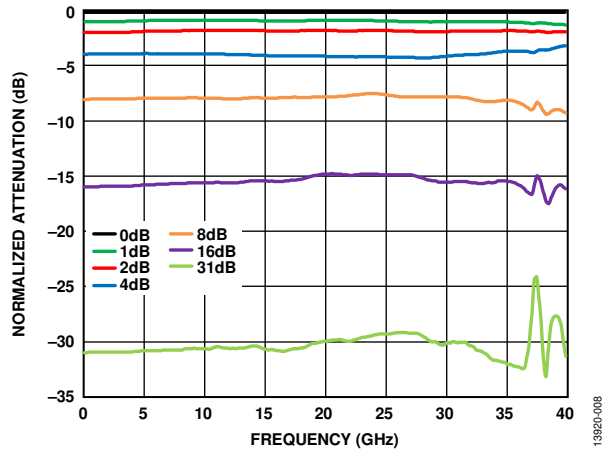


Figure 8. Normalized Attenuation vs. Frequency over Major Attenuation States

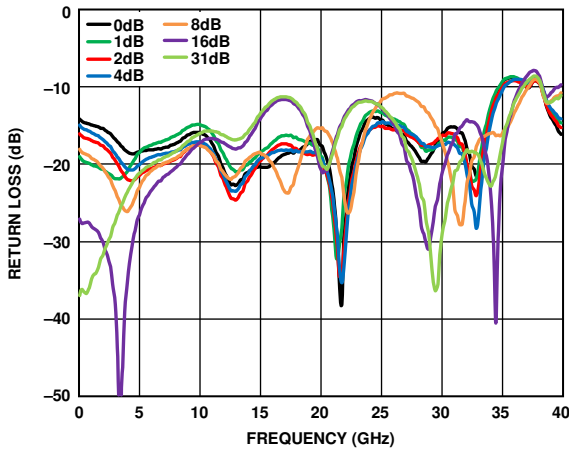


Figure 6. RF1 Return Loss vs. Frequency over Major Attenuation States

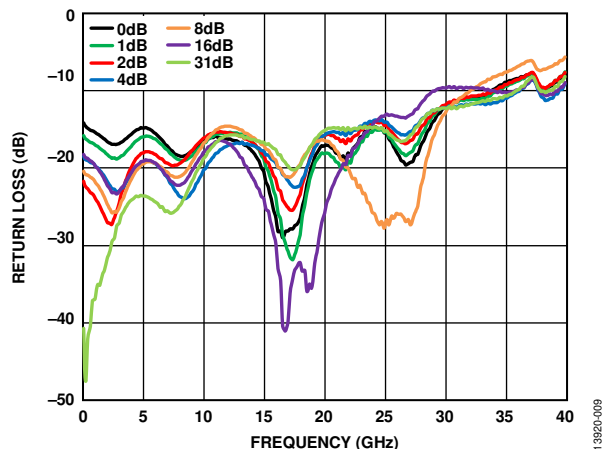


Figure 9. RF2 Return Loss vs. Frequency over Major Attenuation States

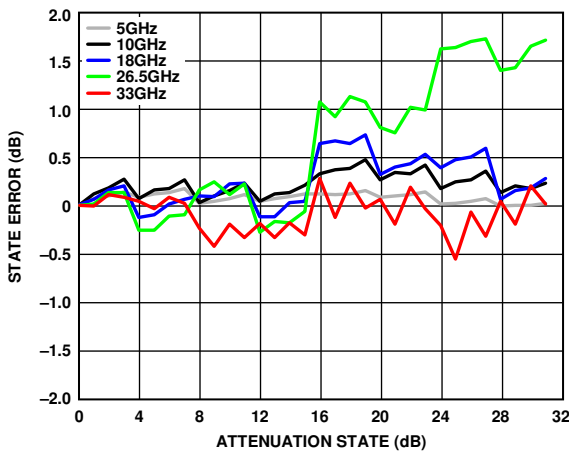


Figure 7. State Error vs. Attenuation State over Frequency

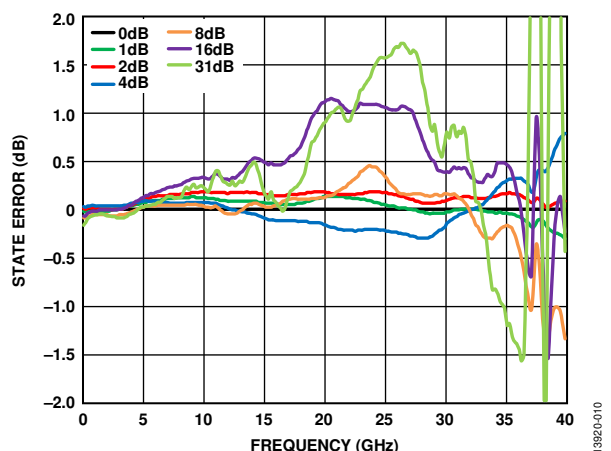


Figure 10. State Error vs. Frequency over Major Attenuation States

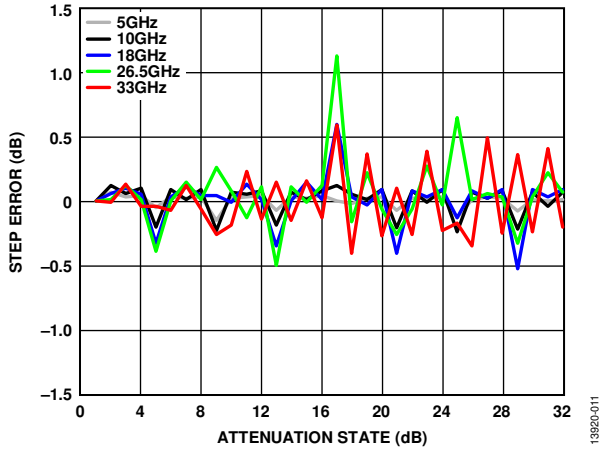


Figure 11. Step Error vs. Attenuation State over Frequency

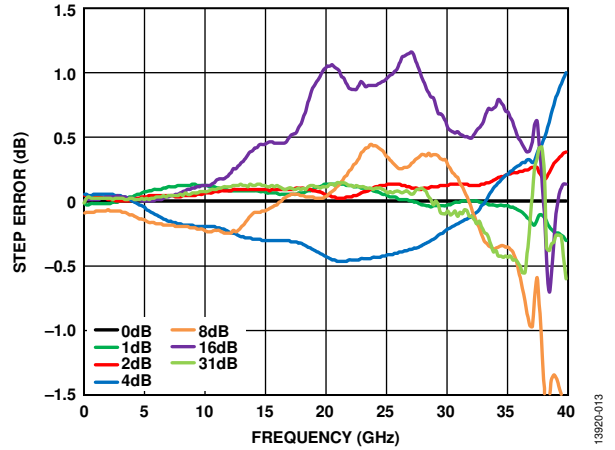


Figure 13. Step Error vs. Frequency over Major Attenuation States

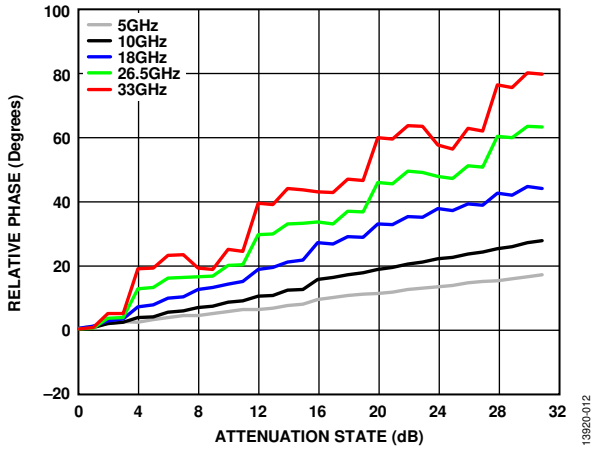


Figure 12. Relative Phase vs. Attenuation State over Frequency

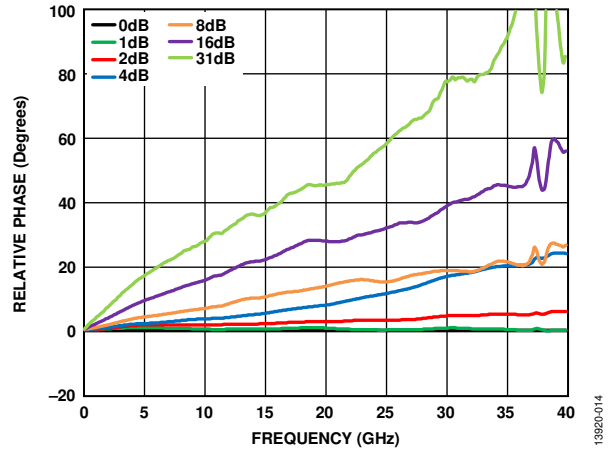


Figure 14. Relative Phase vs. Frequency over Major Attenuation States

INPUT POWER COMPRESSION AND THIRD-ORDER INTERCEPT

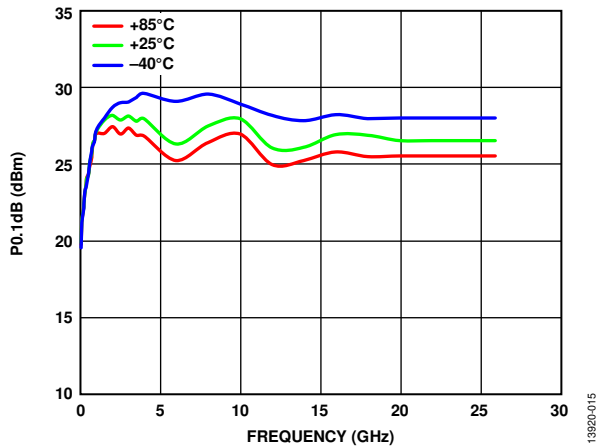


Figure 15. Input P0.1dB vs. Frequency at Minimum Attenuation State over Temperature

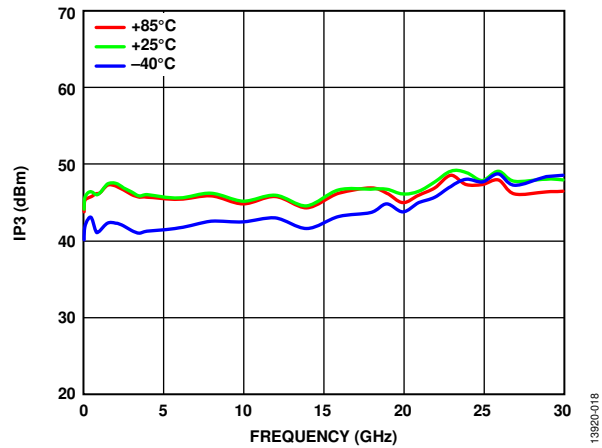


Figure 18. Input IP3 vs. Frequency at Minimum Attenuation State over Temperature

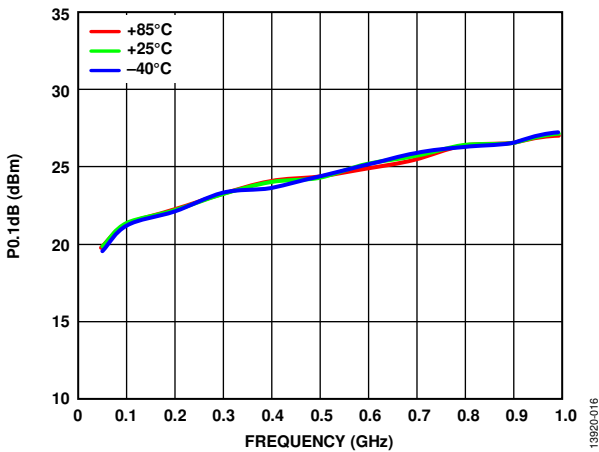


Figure 16. Input P0.1dB vs. Frequency at Minimum Attenuation State over Temperature (Low Frequency Detail)

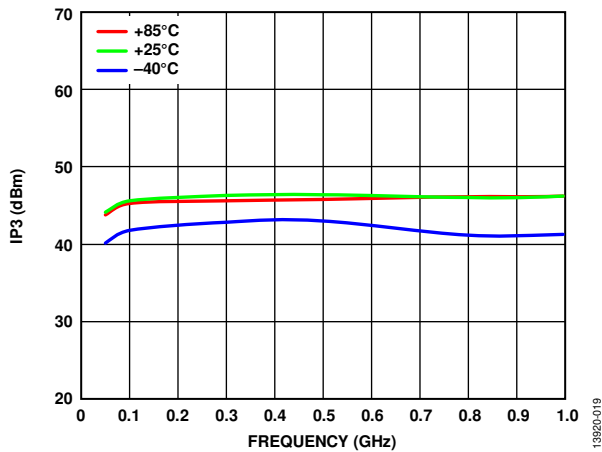


Figure 19. Input IP3 vs. Frequency at Minimum Attenuation State over Temperature (Low Frequency Detail)

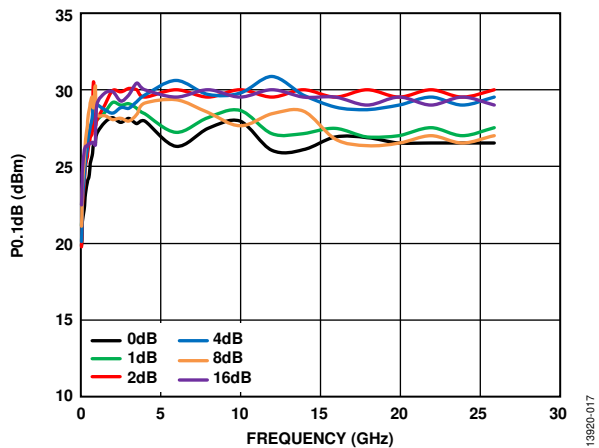


Figure 17. Input P0.1dB vs. Frequency over Major Attenuation States

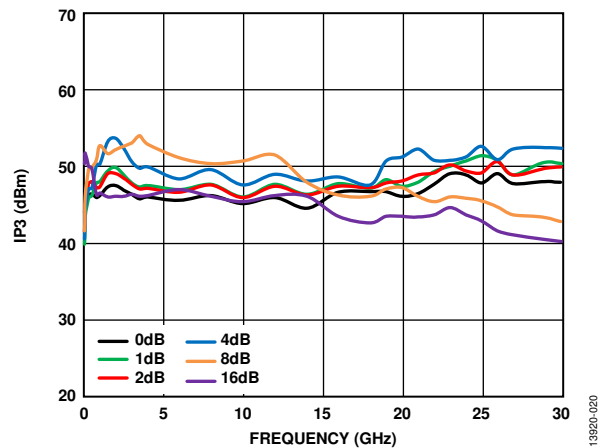


Figure 20. Input IP3 vs. Frequency over Major Attenuation States



## THEORY OF OPERATION

The HMC939ALP4E incorporates a 5-bit attenuator die that offers an attenuation range of 31 dB in 1 dB steps and a driver for CMOS-/TTL-compatible parallel control of the 5-bit attenuator. See Table 5 for the truth table.

**Table 5. P4 to P0 Truth Table**

| Digital Control Input <sup>1</sup> |      |      |      |      | Attenuation State (dB) |
|------------------------------------|------|------|------|------|------------------------|
| P4                                 | P3   | P2   | P1   | P0   |                        |
| High                               | High | High | High | High | 0 dB (reference)       |
| High                               | High | High | High | Low  | 1 dB                   |
| High                               | High | High | Low  | High | 2 dB                   |
| High                               | High | Low  | High | High | 4 dB                   |
| High                               | Low  | High | High | High | 8 dB                   |
| Low                                | High | High | High | High | 16 dB                  |
| Low                                | Low  | Low  | Low  | Low  | 31 dB                  |

<sup>1</sup> Any combination of the control voltage input states shown in Table 5 provides an attenuation equal to the sum of the bits selected.

## POWER SUPPLY

The HMC939ALP4E requires dual supply voltages, VDD = +5 V and VSS = -5 V, and CMOS/TTL-compatible control voltages applied to the P0 to P4 pins. The ideal power-up sequence is as follows:

1. Connect the ground reference.
2. Power up VDD and VSS. The relative order is not important.
3. Apply the digital control inputs. The relative order of the digital control inputs is not important.
4. Apply an RF input signal to RF1 or RF2.

The power-down sequence is the reverse of the power-up sequence.

## RF INPUT AND OUTPUT

The HMC939ALP4E is bidirectional. The RF1 and RF2 pins are internally matched to 50  $\Omega$  and dc-coupled to 0 V; therefore, they do not require external matching components and dc blocking capacitors when the RF line potential is equal to 0 V.

# APPLICATIONS INFORMATION

## EVALUATION BOARD

The HMC939ALP4E uses a 4-layer evaluation board. The copper thickness is 0.5 oz (0.7 mil) on each layer. The top dielectric material is 10 mil Rogers RO4350 for optimal high frequency performance. The middle and bottom dielectric materials are FR-4 type materials to achieve an overall board thickness of 62 mil. RF traces are routed on the top copper layer and the bottom layer is grounded plane that provide a solid ground for the RF transmission lines. The RF transmission lines are designed using a coplanar waveguide (CPWG) model with a width of 16 mil and ground spacing of 13 mil to have a characteristic impedance of 50 Ω. For enhanced RF and thermal grounding, as many plated through vias as possible are arranged around transmission lines and under the exposed pad of the package.

Figure 21 shows the top view of the populated HMC939ALP4E evaluation board, available from Analog Devices, Inc., upon request (see the Ordering Guide section).

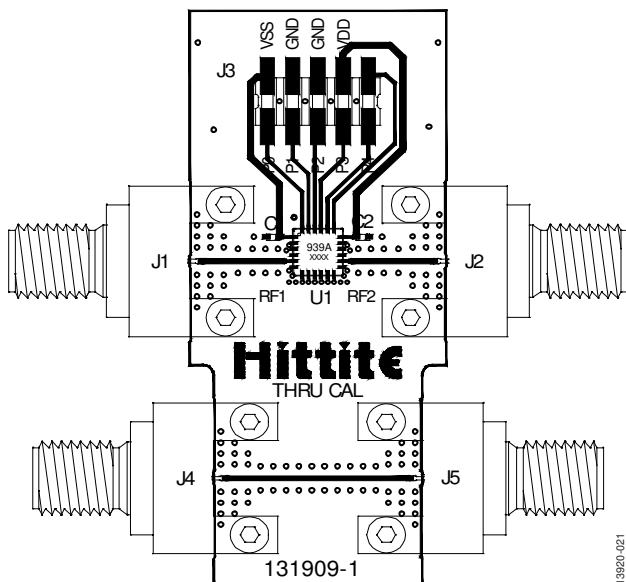


Figure 21. Populated Evaluation Board—Top View

The evaluation board is grounded from the 2 × 5-pin header, J3. All the supply and digital control pins are also connected to the J3. A 1 nF decoupling capacitors are placed on the supply traces to filter high frequency noise.

The RF1 and RF2 ports are connected through 50 Ω transmission lines to the RF connectors, J1 and J2, respectively. A thru calibration line connects J4 and J5; this transmission line is used to estimate the loss of the PCB over the environmental conditions being evaluated.

Figure 22 and Table 6 show the evaluation board schematic and bill of materials, respectively.

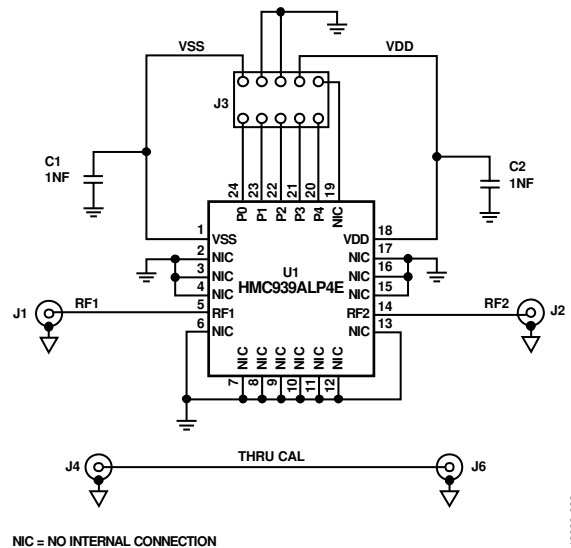
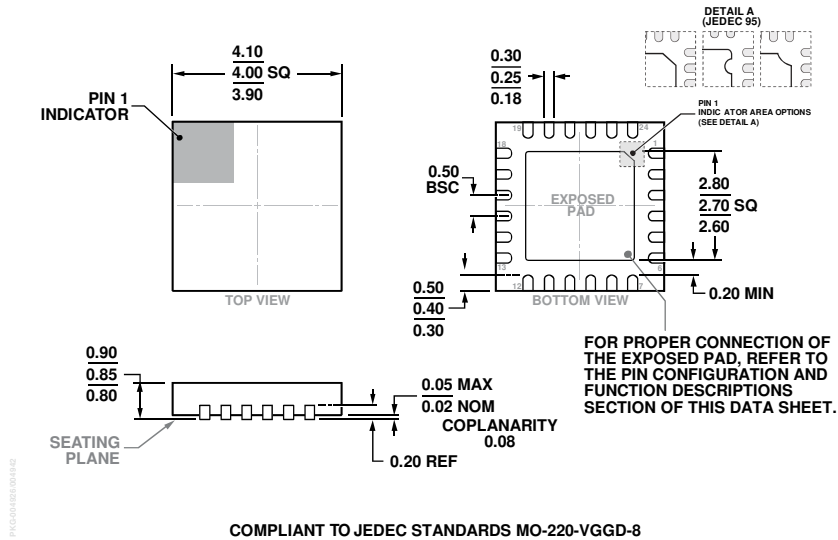


Figure 22. Evaluation Board Schematic

Table 6. List of Materials for EV1HMC939ALP4

| Item   | Description                                   |
|--------|---|
| J1, J2 | PCB mount, 2.9 mm RF connector                |
| J3,    | 2 × 5-pin header                              |
| J4, J5 | PCB mount, 2.9 mm RF connector, do not insert |
| C1, C2 | 1 nF capacitor, 0402 package                  |
| U1     | HMC939ALP4E digital attenuator                |
| PCB    | 131909-1 evaluation PCB                       |

# OUTLINE DIMENSIONS



COMPLIANT TO JEDEC STANDARDS MO-220-VGGD-8  
 Figure 23. 24-Lead Lead Frame Chip Scale Package [LFCS<sup>P</sup>]  
 4 mm × 4 mm Body and 0.85 mm Package Height  
 (CP-24-16)  
 Dimensions shown in millimeters

## ORDERING GUIDE

| Model <sup>1</sup> | Temperature Range | MSL Rating <sup>2</sup> | Package Description  | Package Option |
|--------------------|-------------------|-------------------------|--|----------------|
| HMC939ALP4E        | -40°C to +85°C    | MSL3                    | 24-Lead Lead Frame Chip Scale Package [LFCS <sup>P</sup> ] | CP-24-16       |
| HMC939ALP4ETR      | -40°C to +85°C    | MSL3                    | 24-Lead Lead Frame Chip Scale Package [LFCS <sup>P</sup> ] | CP-24-16       |
| EV1HMC939ALP4      |                   |                         | Evaluation Board   |                |

<sup>1</sup> All models are RoHS compliant.  
<sup>2</sup> See the Absolute Maximum Ratings section.