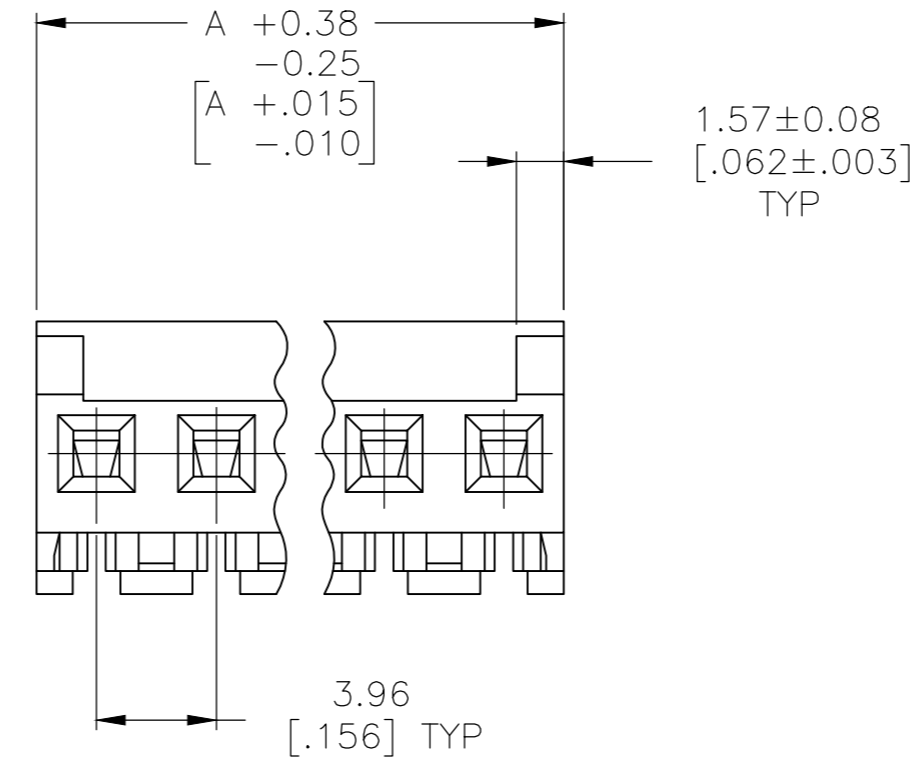
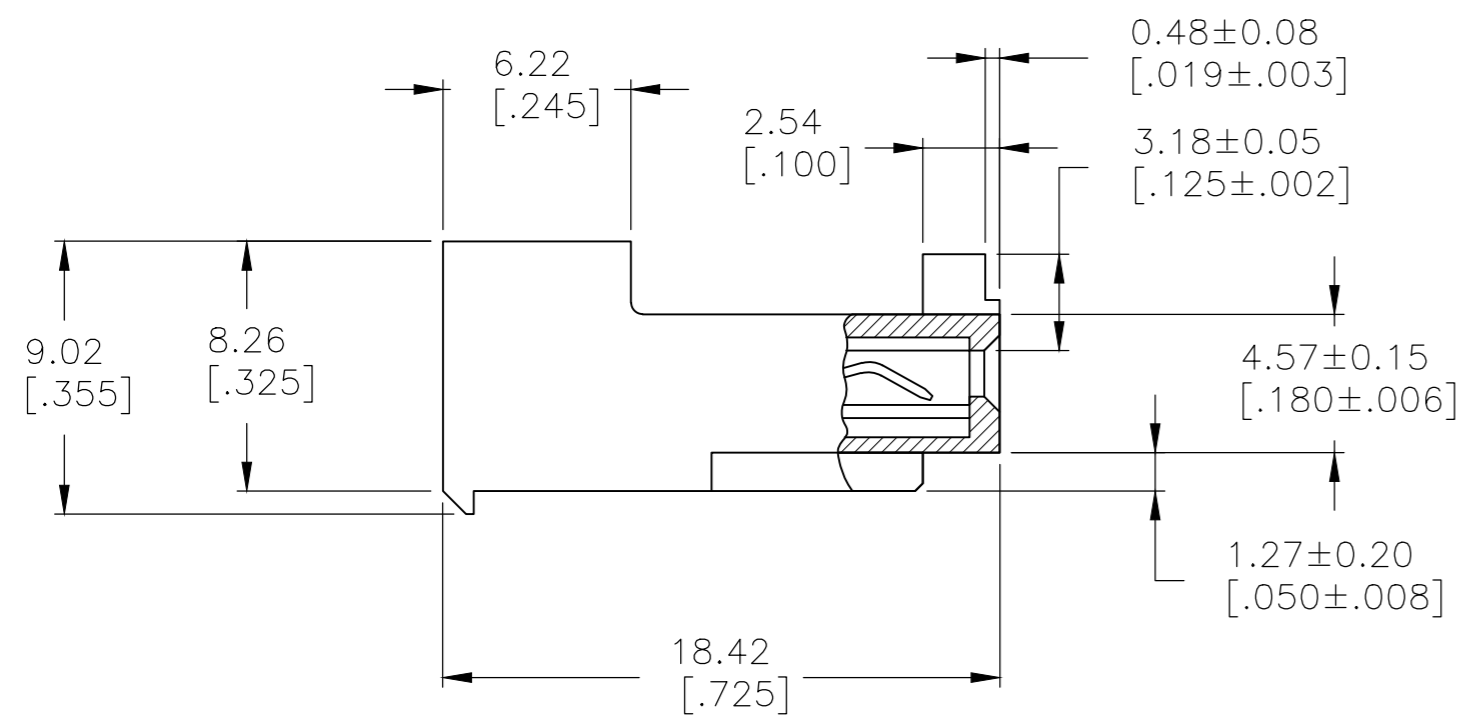
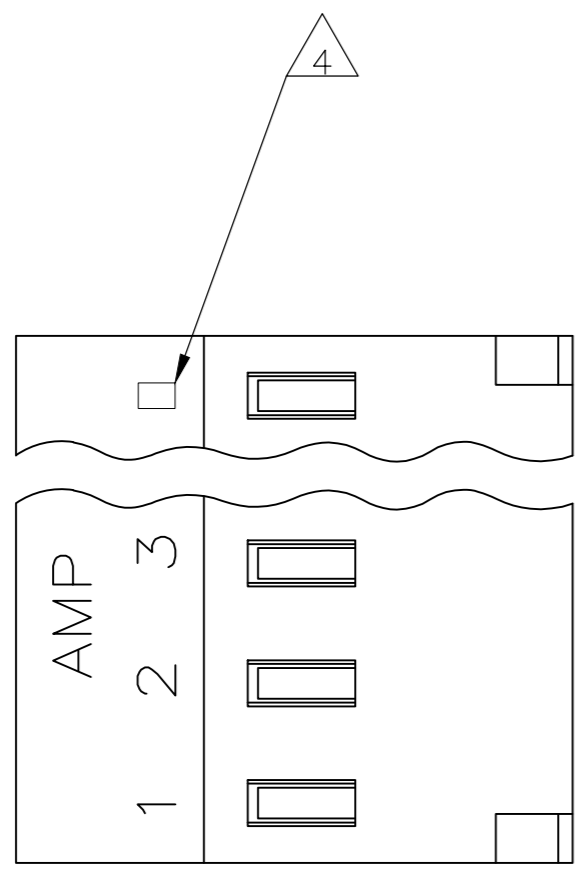


THIS DRAWING IS UNPUBLISHED. RELEASED FOR PUBLICATION  
 © COPYRIGHT - By - TE CONNECTIVITY ALL RIGHTS RESERVED.

LOC	DIST	REVISIONS					
		P	LTR	DESCRIPTION	DATE	DWN	APVD
CM	54						
		E		REVISED PER ECR-20-000814	26MAY2020	PC	SW

- 1 MATERIAL: CONNECTOR - NYLON UL94V-2 (ORANGE).  
 CONTACTS - 0.30 [.012] THICK COPPER ALLOY (BRIGHT-TIN LEAD 0.00203 [.000080] MIN THK FOR CONTACTS 644461-2 THRU 1-644461-4, MATTE WHISKER MITIGATED TIN 0.00203 [.000080] MIN THICK FOR CONTACTS 3-644461-2 THRU 4-644461-4)
- 2 CONTACTS ACCEPT 18 AWG WIRE WITH 2.41 [.095] MAX INSULATION DIAMETER.
- 3 CONTACTS MUST ACCEPT 1.14±0.03 [.045±.001] SQUARE POST AND REMAIN LOCKED IN POSITION.
- 4 IDENTIFICATION NUMBER FOR LAST CIRCUIT MAY NOT APPEAR ON ALL ASSEMBLIES.
- 5 DIMENSIONS IN BRACKETS ARE IN INCHES.
- 6 HOUSING FEATURES ARE: CLOSED END WITHOUT LOCKING RAMP AND WITH POLARIZING TAB.3
- 7 OBSOLETE PARTS: OBSOLETE CIS STREAMLINING PER D.RENAUD/D.SINISI
- 8 OBSOLETE PARTS



	DIM A	NO. OF CIRCUITS	PART NO.
	55.47 [2.184]	14	4-644461-4
	51.51 [2.028]	13	4-644461-3
	47.55 [1.872]	12	4-644461-2
	43.59 [1.716]	11	4-644461-1
	39.62 [1.560]	10	4-644461-0
	35.66 [1.404]	9	3-644461-9
	31.70 [1.248]	8	3-644461-8
	27.74 [1.092]	7	3-644461-7
	23.77 [.936]	6	3-644461-6
	19.81 [.780]	5	3-644461-5
	15.85 [.624]	4	3-644461-4
	11.89 [.468]	3	3-644461-3
	7.92 [.312]	2	3-644461-2
7 SUPERCEDED	55.47 [2.184]	14	1-644461-4
7 OBSOLETE	51.51 [2.028]	13	1-644461-3
7 SUPERCEDED	47.55 [1.872]	12	1-644461-2
7 SUPERCEDED	43.59 [1.716]	11	1-644461-1
8 SUPERCEDED	39.62 [1.560]	10	1-644461-0
8 SUPERCEDED	35.66 [1.404]	9	-644461-9-
8 SUPERCEDED	31.70 [1.248]	8	-644461-8-
8 SUPERCEDED	27.74 [1.092]	7	-644461-7-
8 SUPERCEDED	23.77 [.936]	6	-644461-6-
8 SUPERCEDED	19.81 [.780]	5	-644461-5-
8 SUPERCEDED	15.85 [.624]	4	-644461-4-
8 SUPERCEDED	11.89 [.468]	3	-644461-3-
8 SUPERCEDED	7.92 [.312]	2	-644461-2-

THIS DRAWING IS A CONTROLLED DOCUMENT.		DWN B. LEWIS 12FEB91	TE Connectivity	
DIMENSIONS: mm [INCHES]		CHK R. SWING 12FEB91	MTA 156 CONNECTOR ASSEMBLY, 18 AWG, STANDARD	
TOLERANCES UNLESS OTHERWISE SPECIFIED:		APVD D.R. CLARK 20FEB91	NAME	
0 PLC ± -	1 PLC ± -	PRODUCT SPEC 108-1051	SIZE	
2 PLC ± -	3 PLC ± -	APPLICATION SPEC 114-1020	CAGE CODE 00779	DRAWING NO C-644461
4 PLC ± -	ANGLES ± -	MATERIAL	WEIGHT	RESTRICTED TO
FINISH		CUSTOMER DRAWING		
SCALE 4:1		SHEET 1 OF 1		REV E