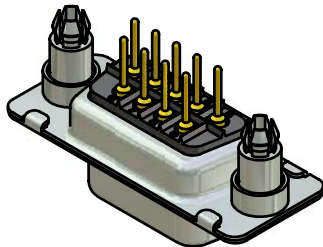
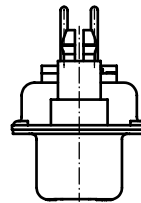
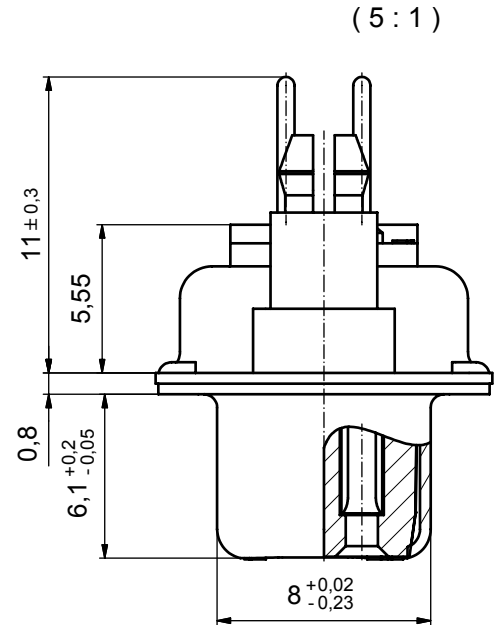
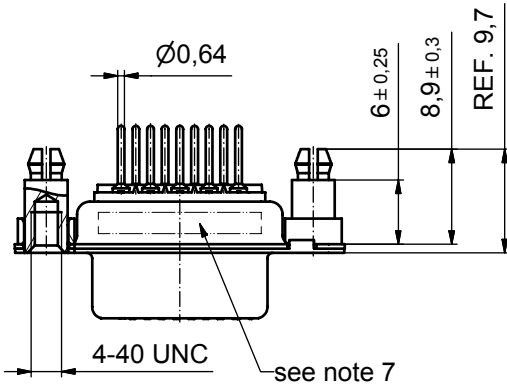
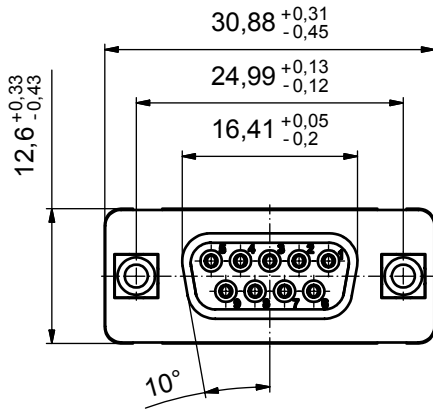


P.C.B. HOLE DRILLINGS



Directive 2002/95/EC
RoHS
Compliant

NOTES:

- METALSHELLS: STEEL; min. 315µin TIN over 40-80µin NICKEL
- INSULATORS: PBT GF UL 94 V-0, BLACK
- CONTACTS: COPPER ALLOY
PLATING: 8µin HARD GOLD over min. 50µin NICKEL
- THREADED REAR SPACER WITH PCB CLIP:
COPPER ALLOY; min. 200µin TIN over 80µin NICKEL
PCB-HOLE: $\phi 3.1 \pm 0.1$; PCB THICKNESS 1,6mm
- COLLAR: COPPER ALLOY; min. 200µin TIN over 80µin NICKEL
- MAXIMUM TORQUE VALUE FOR THREAD: 6 in.LB
- CONNECTOR IS PART MARKED: PART-NO. CONEC ABC

APPROVAL # FREIGABE # DEBLOCAGE # AUTORIZACION # APPROVAL	
CUSTOMER APPROVAL DATE:	
NAME:	TITLE:
COMPANY NAME:	
APPROVAL # FREIGABE # DEBLOCAGE # AUTORIZACION # APPROVAL	

finish: see notes				tolerance ISO 2768-m		dim. in mm		scale: 2:1 (5:1)	
date				name		title:		material: see notes	
drawn				24.08.06		Schmidt		D-SUB FEMALE 9pos. SOLDER PIN STRAIGHT with threaded rear spacer with PCB clip	
appd.				24.08.06		Kühle			
norm									
d-old									
a Origin						dwg no: Inventor 10		DIN-A3	
rev. description				date		name		sh: 1	



dwg no: Inventor 10		DIN-A3	
16K1A1874		sh: 1	
part no: DSS1XSRAA56X			