

1

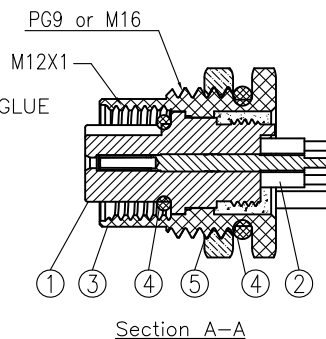
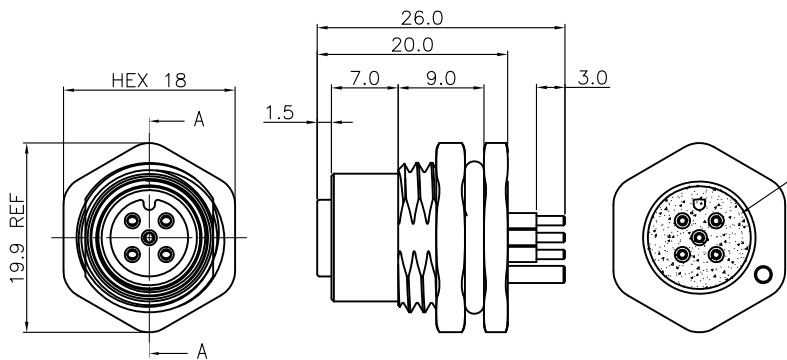
2

3

4

5

RoHS Compliant



Specifications:

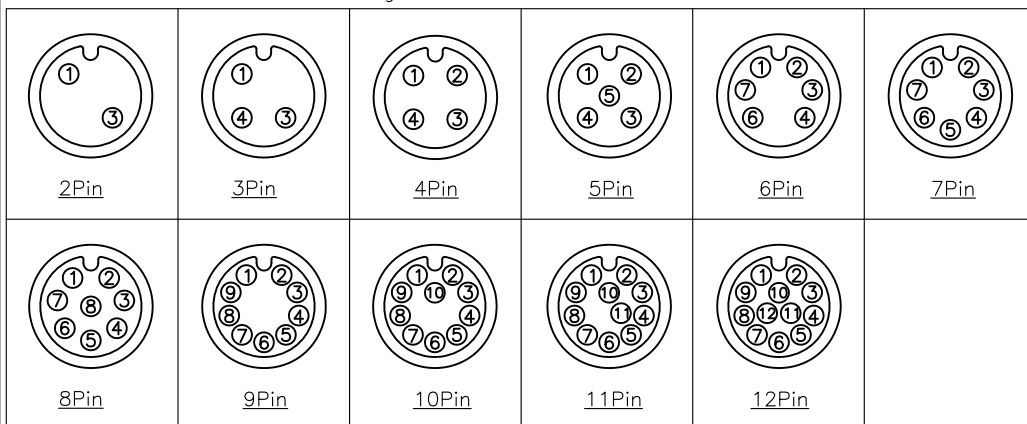
Current Rating: 4A(2~5P); 2A(6~8P); 1.5A(9~12P) AC/DC
 Voltage Rating: 250V(2~4P); 60V(5P); 30V(6~12P) AC/DC
 Contact Resistance: 5m ohm. Max.
 Insulation Resistance: 100M ohm. Min.
 Withstanding Voltage: 500V AC/Minute
 Waterproof rate: IP67
 Operating Temperature Range: -40°C ~ +100°C
 Material and Finish
 See Table

How to Order

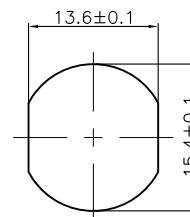
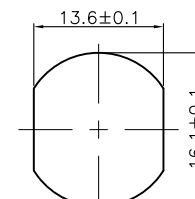
M12-XXS-FA-PBSX

Panel Lock Thread
 1: PG9
 2: M16
 With Shielding
 Panel Mount PCB Dip
 Front Fastened A Coding Die Casting
 Socket
 No. of Contacts
 M12

Pin Assignments Front View



| ITEM | Description | Material | Remark | Q'TY |
|------|-------------|--------------|----------------------------------|------|
| 1 | Insulator | Nylon | UL94V-0 Black | 1 |
| 2 | Terminal | Copper Alloy | Gold Plated 1u" | 2~12 |
| 3 | Shell | Zinc Alloy | Nickel Plated 60u" | 1 |
| 4 | Seal ring | Silicone | Red | 2 |
| 5 | Nut | Copper Alloy | PG9 or M16 Nickel Plated 60u" | 1 |

PG9 Recommended Panel CUT-Out
Thickness: 4.0mmM16 Recommended Panel CUT-Out
Thickness: 4.0mm

Recommended PCB Layout See Page 2

| | | | | | |
|-----|-------------|------|--------|-----------|---------------------|
| F | | | | DRAWN: | GENERAL TOLERANCE: |
| E | | | | ANDREW | .X=±0.3 .XX=±0.2 |
| D | | | | CHECKED: | UNIT: MM |
| C | | | | BILL | SCALE: 1:1 |
| B | | | | APPROVAL: | SHEET: 1/2 |
| A | 27-MAR-2021 | | ANDREW | BILL | PROJECTION: |
| REV | DATE | FILE | BY | | |

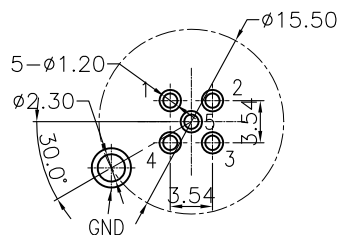
ON-SHORE TECHNOLOGY, INC.

DESCRIPTION:

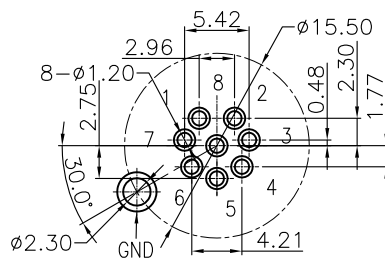
M12 A CODE SOCKET STRAIGHT DIP TYPE

PART NO:

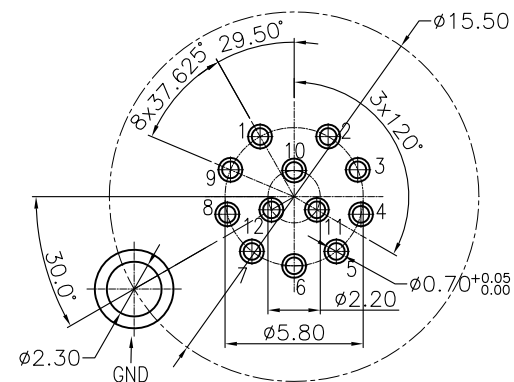
M12-XXS-FA-PBSX




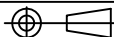
3~5P Recommended PCB Layout
TOL:±0.05mm



6~8P Recommended PCB Layout
TOL:±0.05mm



9~12P Recommended PCB Layout
TOL:±0.05mm
Scale:2:1

| | | | | | | |
|-----|-------------|------|----|---------------------|---|--|
| F | | | | DRAWN: ANDREW | GENERAL TOLERANCE: .X=±0.3 .XX=±0.2 |  ON-SHORE TECHNOLOGY, INC. |
| E | | | | | | |
| D | | | | CHECKED: BILL | UNIT: MM | DESCRIPTION: M12 A CODE SOCKET STRAIGHT DIP TYPE |
| C | | | | | SCALE: 1:1 | |
| B | | | | APPROVAL: ANDREW | SHEET: 2/2 | PART NO: M12-XXS-FA-PBSX |
| A | 27-MAR-2021 | | | | PROJECTION:  | |
| REV | DATE | FILE | BY | BILL | | |

A

B

C

D