

MATERIAL

Thermoplastic elastomer (TPE), black colour.
Steel internal return spring (RHMA-23).

COVERING CAPS

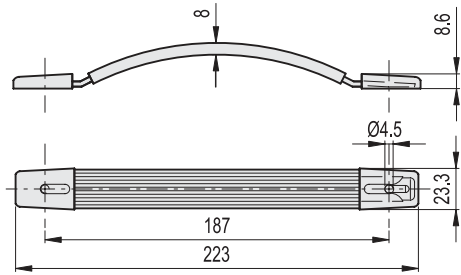
- RHMA-20 / RHMA-23: nickel-plated steel.
- RHMA-25 / RHMA-37: glass-fibre reinforced polyamide based (PA) technopolymer.

STANDARD EXECUTIONS

- **RHMA-20:** back mounting, holes for self-tapping screws (DIN 7981) for plate.
- **RHMA-23:** front mounting, holes for M4 countersunk-head screws.
- **RHMA-25:** front mounting, holes for M4 countersunk-head screws.
- **RHMA-37:** front mounting, holes for M5 countersunk-head screws.

APPLICATIONS

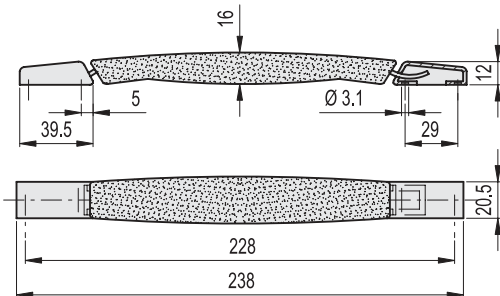
Suitable to be assembled on instruments, suitcases and similar applications.



RHMA-23.205

METRIC

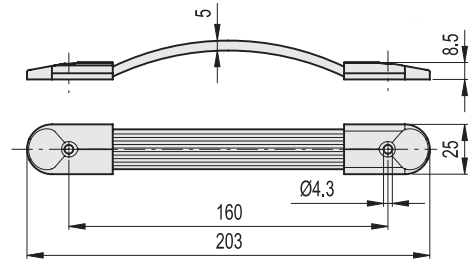
Code	⚖
RHMA-23.205.84	65



RHMA-20

METRIC

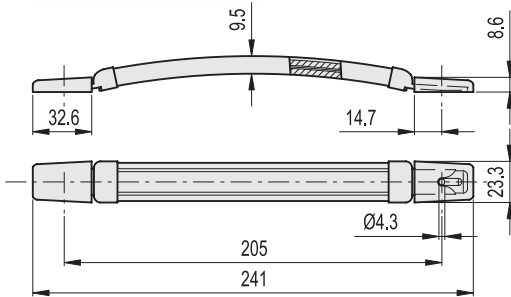
Code	⚖
RHMA-20.228.84	90



RHMA-25

METRIC

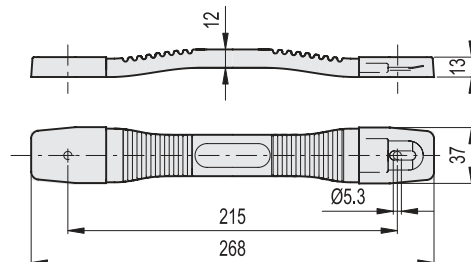
Code	⚖
RHMA-25.160.84	26



RHMA-23.187

METRIC

Code	⚖
RHMA-23.187.84	60



RHMA-37

METRIC

Code	⚖
RHMA-37.215.84	136

