

# Accessories

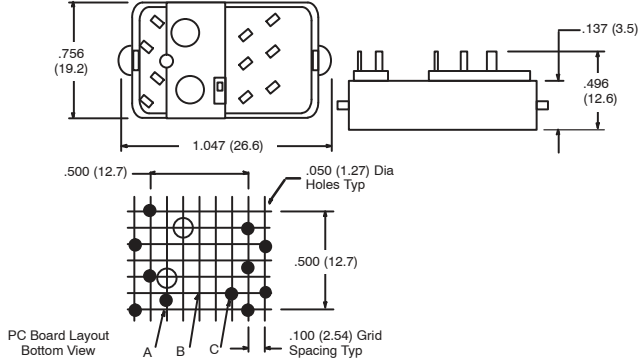
## R95-102

### Features

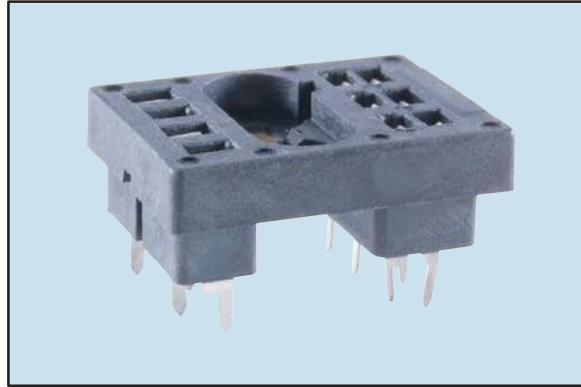
- PC Board Mount

### Electrical Rating:

1000 Volts, 5 Amps



## 10-Pin Blade Socket



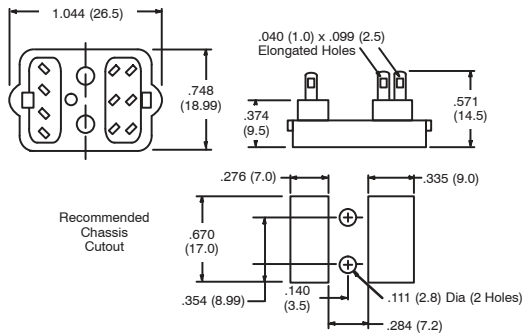
## R95-103

### Features

- Panel Mount
- Solder Terminals

### Electrical Rating:

1000 Volts, 5 Amps



## 10-Pin Blade Socket



## R95-104

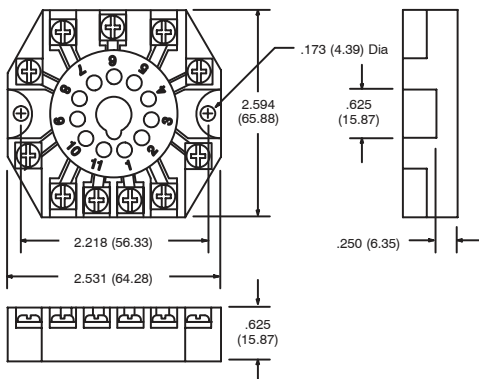


### Features

- Panel/Surface Mount
- Pressure Clamp Screws
- Screws: 6-32 x 5/16", Steel, Nickel Plated.

### Electrical Rating:

300 Volts, 10 Amps



## 11-Pin Octal Socket

