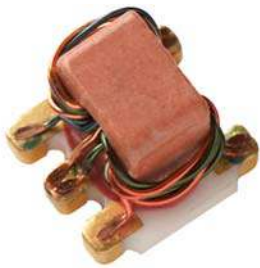


## MABA-000001-50KIT1 Designer's Kit



**Delivering designer's kits...**  
transformers ranging from 1 to 3000 MHz

### Features:

- Very wide bandwidth
- Termination finish, both gold over nickel plated and tin plated
- Various surface mount parts
- Aqueous washable
- RoHS compliant

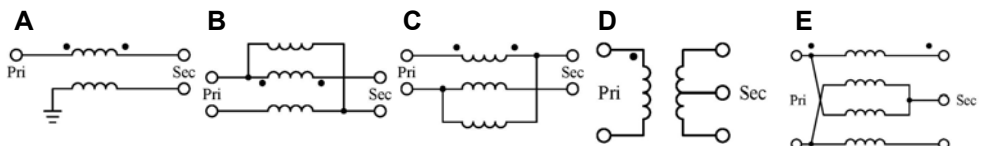
## Competitive pricing - Call for quotes

Each kit contains 15 models, 10 of each, 150 total

### MABA-000001-50KIT1 Electrical Specifications of each model

Part Number	$\Omega$ Ratio	Specified Freq (MHz)	Insertion Loss			Configuration
			3 dB MHz	2 dB MHz	1 dB MHz	
MABA-009180-500MHZ	1:1	3-500	0.40-500	0.50-300	1-100	D
ETC1-1-6TR	1:1	760-960	-	760-960	-	C
ETC1-1-10TR	1:1	1710-1910	-	1710-1910	-	B
MABA-009602-ES2922	1:1	5-1200	-	600-1200	5-600	C
MABA-007159-000000	1:1	4.5-3000	2000-2800	1000-2000	4.5-1000	A
MABA-010125-TC1113	1:1	4.5-3000	2000-3000	1000-2000	4.5-1000	A
MABA-009250-CT0068	1:2	1-350	-	-	3-300	D
MABA-009484-ETC31T	1:3	2-500	-	-	2-500	D
MABAES0061	1:4	3-800	2-800	5-600	10-100	D
MABA-009711-ETK2MM	1:4	2-1000	700-1000	500-700	3-500	E
MABA-008639-TC41T7	1:4	6-1000	600-1000	6-600	-	E
MABA-007236-C16423	1:4	500-2500	500-3000	-	750-1200	E
MABA-010143-FLUX18	1:8	2-500	-	2-500	-	D
ETC9-1T-5TR	1:9	10-75	-	10-75	-	D
ETC16-1T-2TR	1:16	5-40	-	-	5-40	D

### Configurations:



M/A-COM Technology Solutions Inc.

- Lowell, Massachusetts 01851
- North America 800.366.2266
  - Europe +353.21.244.6400
  - India +91.80.43537383
  - China +86.21.2407.1588

www.macomtech.com

**The First Name in Microwave**