

Tous droits strictement réservés. Reproduction ou communication a des tiers int sous quelque forme que ce soit sans autorisation écrite du propriétaire. Propriete de c FCI ELECTRONICS. Droits de reproduction FCI ELECTRONICS by

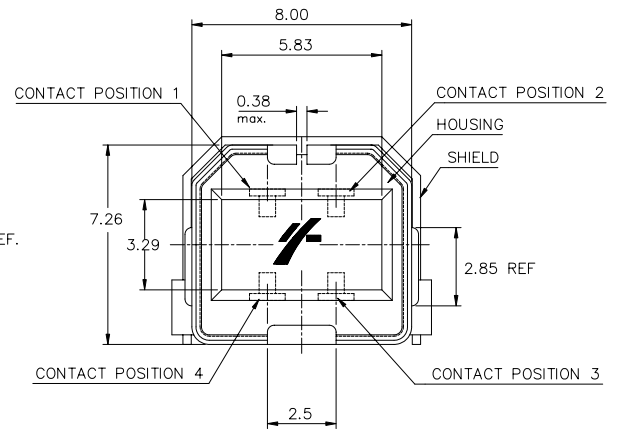
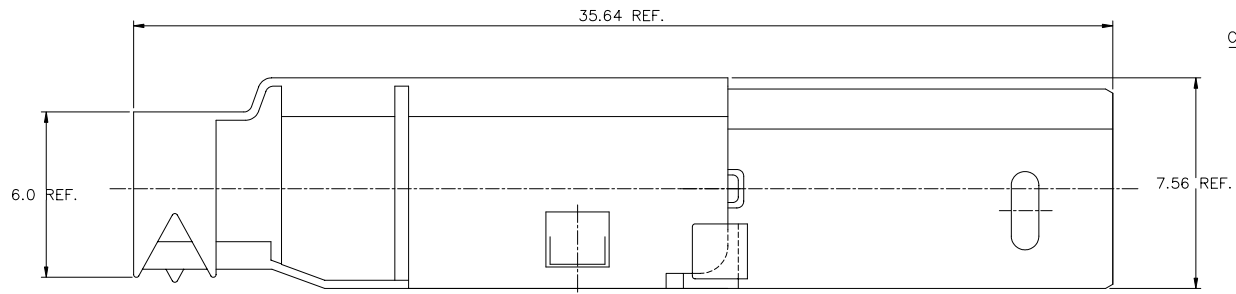
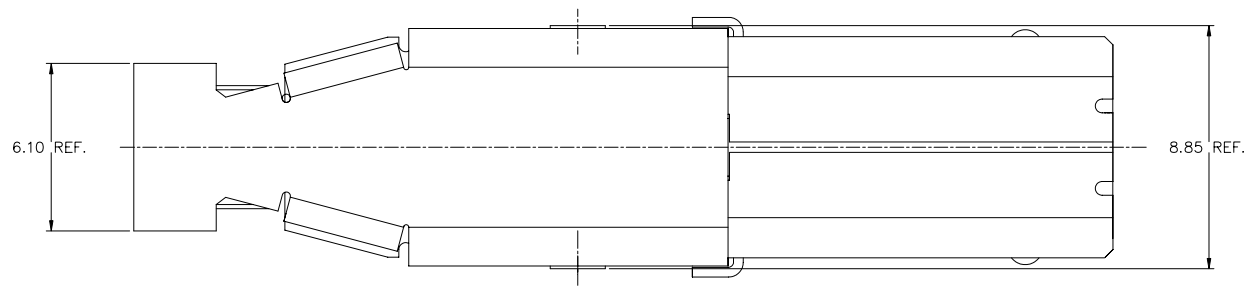
All rights strictly reserved. Reproduction or issue to third parties in any for whatever is not permitted without written authority from the proprietor. Property of c FCI ELECTRONICS. Copyright FCI ELECTRONICS by

PRODUCT NO.
61730

PRODUCT NUMBER CODE

6 1 7 3 0 - X 0 X LF

BASE PRODUCT NUMBER
HOUSING COLOR & SHELL OPTION
0-WHITE & SHELL SPCC
1-BLACK & SHELL SPCC
TERMINAL PLATING OPTION
1-30 u" GXT IN CONTACT AREA
100µ" TIN/LEAD IN CONTACT AREA
4-30u" AU IN CONTACT AREA
100µ" TIN/LEAD IN CONTACT AREA
LEAD FREE OPTION
IF LEAD FREE OPTION SELECTED, THE TIN/LEAD PLATING WERE REPLACED BY PURE TIN



NOTES:

- MATERIAL:
SHIELD : SPCC FOR 61730-0XX/-1XX
COPPER ALLOY FOR 61730-2XX/-3XX
CONTACTS : COPPER ALLOY
HOUSING : UL 94V-0 THERMOPLASTIC COLOR: SEE PRODUCT NUMBER CODE
- CONTACT PLATING : 1.25 µm/50 µ" Ni MIN. OVERALL
2.54 µm/100 µ" T/L OR TIN IN SOLDER AREA
SEE PRODUCT NUMBER CODE
- SHIELD PLATING : 2.5 µm MINIMUM NICKEL
- PRINT IS ONLY FOR ASSEMBLY REFERENCE
- SPCC SHELL DOES NOT COMPLY WITH THE USB STANDARDS
- PACKING STANDARD GS-14-920 WILL BE APPLIED FOR LEAD FREE P/N'S
- FOR LEAD FREE P/N, THE PRODUCT MEET EUROPEAN UNION DIRECTIVES AND OTHER COUNTRY REGULATION AS DESCRIBED IN GS-22-008
- FOR LEAD FREE P/N'S, THE HOUSING WILL WITHSTAND EXPOSURE TO 260°C PEAK TEMPERATURE FOR 40 SECONDS IN A HAND SOLDERING OR WAVE SOLDERING PROCESS.

mat'l code		tolerance unless otherwise specified		CUSTOMER COPY		 www.fciconnect.com					
rev.	ecn no.	dr	date	linear	.0 ± 0.30	projection	title				
J	N05-0247	P H	08/29/05		.00 ± 0.20						
					.000± 0.10						
D	T80230	P P	06/09/98	angles	± 2'		USB PLUG B TYPE PLUG KIT SUB-ASS'Y				
E	T80421	P P	09/18/98	dr	PETER			06/02/97	product family	USB	code
F	T80580	P P	12/22/98	engr	R Y LIU	06/02/97	size	dwg no.			
G	T90025	P P	01/25/99	chr	R Y LIU	06/02/97	scale	61730		sheet	1 OF 1
H	T10003	P P	01/04/01	appd	JENN TSAO	06/02/97	5 : 1				
sheet	revision	J									
index	sheet	1									