

**MATERIAL**

Polyamide based (PA) technopolymer, black colour, matte finish.

**STANDARD EXECUTION**

DIN 934 zinc-plated steel nut (included in the supply).

**FEATURES AND APPLICATIONS**

The two end-cap parts are connected together by means of two pins which are housed in special counter-seats. A cavity inside the end-cap is provided for housing an hexagonal nut DIN 934. The assembly can be performed simply by positioning the end-cap inside the tube, with no need of screws or other fasteners.

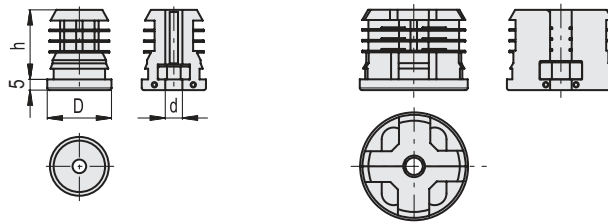
**SPECIAL EXECUTIONS ON REQUEST**

End-cap without nut.



Conversion Table 1 mm = 0.039 inch	
D	
mm	inch
20	0.79
25	0.98
28	1.10
30	1.18
32	1.26
35	1.38
40	1.57
50	1.97

NDL.T-20 ÷ 40



The geometry of the end-cap in the part that is inserted into the tube may vary for the different dimensions.

Code	Description	D	d	h	Tube external diameter	Tube internal diameter min-max	Tube thickness min-max	Max. static load* [N]	⚖️
430651	NDL.T-20x1.1-5-M8	20	M8	34	20	18-17	1-1.5	3000	10
430653	NDL.T-20x2-M8	20	M8	34	20	16	2	3000	9
430661	NDL.T-25x1.5-2-M6	25	M6	34	25	22-21	1.5-2	3000	12
430663	NDL.T-25x1.5-2-M8	25	M8	34	25	22-21	1.5-2	3000	14
430665	NDL.T-25x1.5-2-M10	25	M10	33	25	22-21	1.5-2	3000	18
430667	NDL.T-25x2.5-M8	25	M8	34	25	20	2.5	3000	12
430671	NDL.T-28x1.5-2-M6	28	M6	34	28	25-24	1.5-2	3000	16
430673	NDL.T-28x1.1-5-M8	28	M8	34	28	26-25	1-1.5	3000	17
430675	NDL.T-28x1.1-5-M10	28	M10	34	28	26-25	1-1.5	3000	21
430677	NDL.T-28x2-M8	28	M8	34	28	24	2	3000	16
430679	NDL.T-28x2-M10	28	M10	34	28	24	2	3000	20
430681	NDL.T-30x1-M8	30	M8	34	30	28	1	3000	19
430683	NDL.T-30x1-M10	30	M10	34	30	28	1	3000	22
430685	NDL.T-30x1.5-2-M8	30	M8	34	30	27-26	1.5-2	3000	18
430687	NDL.T-30x1.5-2-M10	30	M10	34	30	27-26	1.5-2	3000	22
430691	NDL.T-32x1.5-2-M8	32	M8	34	32	29-28	1.5-2	3000	22
430693	NDL.T-32x1.5-2-M10	32	M10	34	32	29-28	1.5-2	3000	26
430701	NDL.T-35x1-M10	35	M10	34	35	33	1	3000	29
430703	NDL.T-35x1.5-2-M8	35	M8	34	35	32-31	1.5-2	3000	25
430705	NDL.T-35x1.5-2-M10	35	M10	34	35	32-31	1.5-2	3000	29
430707	NDL.T-35x2.5-M8	35	M8	34	35	30	2.5	3000	23
430709	NDL.T-35x2.5-M10	35	M10	34	35	30	2.5	3000	27
430711	NDL.T-40x1.5-2-M8	40	M8	34	40	37-36	1.5-2	3000	33
430713	NDL.T-40x1.5-2-M10	40	M10	34	40	37-36	1.5-2	3000	37
430715	NDL.T-40x1.5-2-M12	40	M12	34	40	37-36	1.5-2	3000	40
430721	NDL.T-50x1.5-M8	50	M8	34	50	47	1.5	3000	45
430723	NDL.T-50x1.5-M10	50	M10	34	50	47	1.5	3000	48
430725	NDL.T-50x2-M8	50	M8	34	50	46	2	3000	43
430727	NDL.T-50x2-M10	50	M10	34	50	46	2	3000	46
430729	NDL.T-50x2.5-M12	50	M12	34	50	45	2.5	3000	49

\* The max limit static load is the value above which the load applied to the element may cause some plastic material breakage, under particular conditions of use. Obviously, a factor that takes into consideration the importance and the safety level of the specific application must be applied to this value. The values shown in the table refer to the use of the end-cap in combination with a steel tube. The use of an aluminum tube may cause a decrease in the max limit static load equal to 25% due to possible deformations of the tube section under load.

