

DESIGNED & DIMENSIONED
IN MILLIMETERS [INCHES]

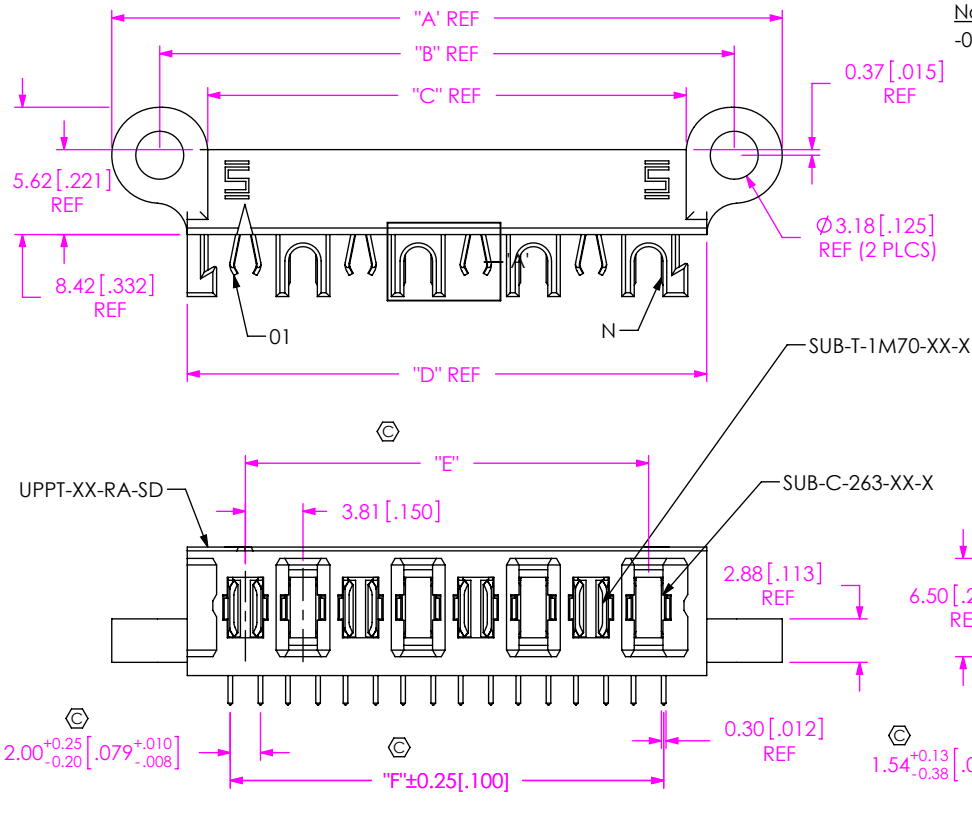
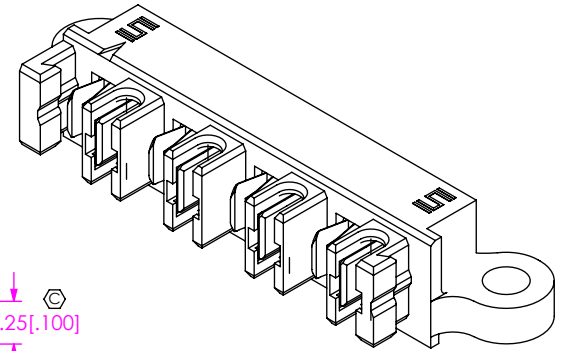


FIG 1
(UPPT-08-01-01-X-RA-SD SHOWN)

UPPT-XX-01-XX-X-RA-XX-XX

- No OF POSITIONS
-02, -04, -06, -08
- LEAD STYLE
-01
- TAIL LENGTH
-01: FOR 1.57 [.062] THICK PCB (USE SUB-T-1M70-01-X AND SUB-C-263-01-X)
-02: FOR 2.36 [.093] THICK PCB (USE SUB-T-1M70-02-X AND SUB-C-263-02-X)
- PACKAGING
BLANK: TUBES (SEE NOTE 7)
-TR: TAPE & REEL (SEE NOTE 8 & 9)
-FR: FULL REEL QTY TAPE & REEL (SEE NOTE 8 & 9)
- OPTION
-SD: SCREW DOWN
-LC: LOCKING CLIP (-SD OR -LC OPTION IS REQUIRED)
- RIGHT ANGLE
- PLATING SPECIFICATION
-L: (SEE TABLE 3)
-T: (SEE TABLE 3)



TAIL LENGTH	"H"	SUB-T-1M70-XX-X	SUB-C-263-XX-X
-01	2.82 [0.111]	SUB-T-1M70-01-X	SUB-C-263-01-X
-02	3.58 [0.141]	SUB-T-1M70-02-X	SUB-C-263-02-X

No. OF POS	"A"	"B"	"C"	"D"	"E"	"F"	"G"
-02	21.49 [0.846]	15.14 [0.596]	8.79 [0.346]	11.50 [0.453]	3.81 [0.150]	5.81 [0.229]	9.50 [0.374]
-04	29.11 [1.146]	22.76 [0.896]	16.41 [0.646]	19.12 [0.753]	11.43 [0.450]	13.43 [0.529]	17.12 [0.674]
-06	36.73 [1.446]	30.38 [1.196]	24.03 [0.946]	26.74 [1.053]	19.05 [0.750]	21.05 [0.829]	24.74 [0.974]
-08	44.35 [1.746]	38.00 [1.496]	31.65 [1.246]	34.36 [1.353]	26.67 [1.050]	28.67 [1.129]	32.36 [1.274]

NOTES:

1. Ⓢ REPRESENTS A CRITICAL DIMENSION.
2. BURR ALLOWANCE: 0.038 [.0015] MAX.
3. MINIMUM PUSHOUT FORCE: 4.45N [1.000 LB].
4. MAXIMUM ALLOWABLE BOW: 0.05 [.002] MM/MM AFTER ASSEMBLY.
5. POSITION 1 WILL MATE TO POSITION N ON MATING CONNECTOR.
6. RECOMMENDED TORQUE ON HOLD DOWN SCREWS TO BE 20 IN-OZ ± 5 IN-OZ.
7. PARTS TO BE PACKAGED IN TUBES UNLESS OTHERWISE STATED.
8. ORDERS WILL BE PACKAGED ACCORDING TO THE SAMTEC PACKAGING EFFICIENCY STANDARDS (SPES) FOUND ON WWW.SAMTEC.COM.
9. ATTACH LABEL TO EACH REEL.

UNLESS OTHERWISE SPECIFIED,
DIMENSIONS ARE IN MILLIMETERS.
TOLERANCES ARE:
DECIMALS ANGLES
X.X: ±0.3 [.01] 2°
X.XX: ±0.13 [.005]
X.XXX: ±0.051 [.0020]

PROPRIETARY NOTE

THIS DOCUMENT CONTAINS CONFIDENTIAL AND PROPRIETARY INFORMATION AND ALL DESIGN, MANUFACTURING, REPRODUCTION, USE, PATENT RIGHTS AND SALES RIGHTS ARE EXPRESSLY RESERVED BY SAMTEC, INC. THIS DOCUMENT SHALL NOT BE DISCLOSED, IN WHOLE OR PART, TO ANY UNAUTHORIZED PERSON OR ENTITY NOR REPRODUCED, TRANSFERRED OR INCORPORATED IN ANY OTHER PROJECT IN ANY MANNER WITHOUT THE EXPRESS WRITTEN CONSENT OF SAMTEC, INC.

MATERIAL: DO NOT SCALE DRAWING SHEET SCALE: 2:1

INSULATOR: LCP
CONTACT AND TERMINAL: BeCu

MAX FLASH ALLOWED: 0.08 [.003]
MAX GATE VESTIGE: 0.08 [.003]

F:\DWG\MISC\MKTG\UPPT-XX-01-XX-X-RA-XX-XX-MKT.SLDDRW

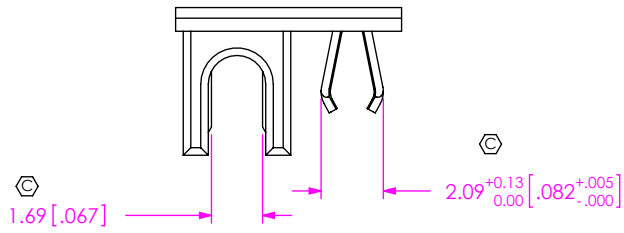


520 PARK EAST BLVD, NEW ALBANY, IN 47150
PHONE: 812-944-6733 FAX: 812-948-5047
e-Mail info@SAMTEC.com code 55322

DESCRIPTION:
Micro Power Hermi Connector

DWG. NO.
UPPT-XX-01-XX-X-RA-XX-XX

BY: B HARPENAU 09/11/2009 SHEET 1 OF 2



DETAIL 'A'
SCALE 4:1

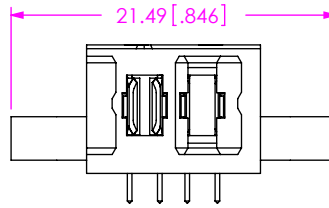
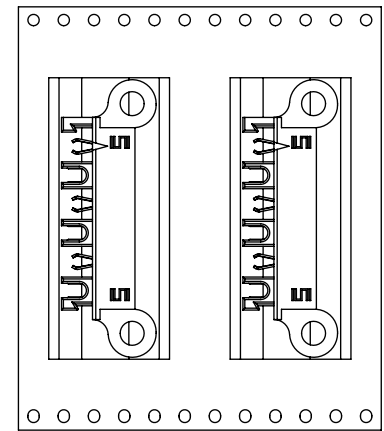
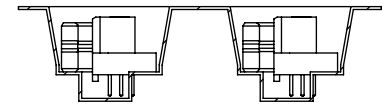


FIG 3
(UPPT-02-01-01-X-RA-SD SHOWN)



USER DIRECTION OF UN-REELING
POCKET NOT DETAILED



PACKAGING VIEW
-TR OPTION

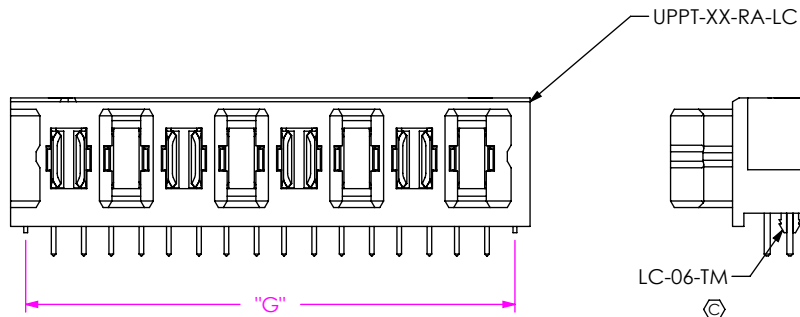
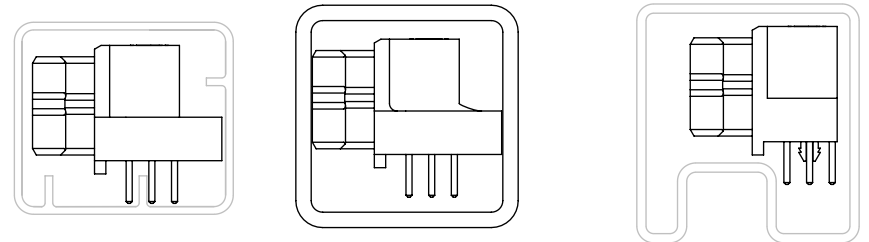


FIG 2
(UPPT-08-01-01-X-RA-LC SHOWN)



TUBE TABLE			
TAIL LENGTH	OPTION	TUBE	PLUG
-02	-SD	PT-1-24-01-08	TP-13
ALL	-LC	PT-1-24-01-40	TP-13
-01	-SD	PT-1-24-02-106	TP-07

PACKAGING TUBE VIEW

TABLE 3		
Plating	POWER PIN CONTACT AREA	POWER PIN TAIL
-L	LIGHT GOLD	MATTE TIN
-T	MATTE TIN	MATTE TIN

PROPRIETARY NOTE
THIS DOCUMENT CONTAINS CONFIDENTIAL AND PROPRIETARY INFORMATION AND ALL DESIGN, MANUFACTURING, REPRODUCTION, USE, PATENT RIGHTS AND SALES RIGHTS ARE EXPRESSLY RESERVED BY SAMTEC, INC. THIS DOCUMENT SHALL NOT BE DISCLOSED, IN WHOLE OR PART, TO ANY UNAUTHORIZED PERSON OR ENTITY NOR REPRODUCED, TRANSFERRED OR INCORPORATED IN ANY OTHER PROJECT IN ANY MANNER WITHOUT THE EXPRESS WRITTEN CONSENT OF SAMTEC, INC.

DO NOT SCALE DRAWING

SHEET SCALE: 2:1



520 PARK EAST BLVD, NEW ALBANY, IN 47150
PHONE: 812-944-6733 FAX: 812-948-5047
e-Mail info@SAMTEC.com code 55322

DESCRIPTION: Micro Power Hermi Connector

DWG. NO. UPPT-XX-01-XX-X-RA-XX-XX

BY: B HARPENAU 09/11/2009 SHEET 2 OF 2