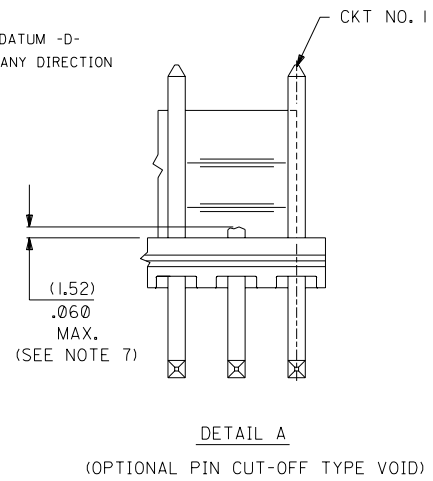


- NOTES:
- PRECEDING ENG. NO. IN CHART DESIGNATES STANDARD PRODUCT.
  - SOLDERABILITY: WHEN PARTS ARE SOLDERED AT A TEMPERATURE OF 230°C (446°F) FOR 5 SECONDS, EACH SOLDERED SURFACE SHALL BE A MINIMUM OF 95% COVERED WITH A SMOOTH CONTINUOUS ADHERENT COATING. FOR OTHER INFORMATION SEE ES-152.
  - PIN PUSH OUT FORCE: PRIOR TO SOLDERING, A 3 POUND MINIMUM FORCE (IN EITHER DIRECTION) SHALL BE REQUIRED TO PUSH THE PIN OUT OF THE HEADER.
  - FOR ADDITIONAL INFORMATION AND TESTING PROCEDURES SEE PS-08-50.
  - PARTS ARE STACKABLE END TO END ON (3.96)/.156 CENTERS.
  - FOR PART WITH PEGS SEE DWG NO. SDA-42492
  - BURRS DUE TO CUTTING OFF OF PINS MUST NOT VARY FROM CENTERLINE OF PIN AT DATUM -D- BY MORE THAN .008 IN ANY DIRECTION.



| NO. OF CKT'S. | DIM. A                 | DIM. B        |
|---------------|------------------------|---------------|
| 2             | (3.96±.05) .156±.002   | (7.77) .306   |
| 3             | (7.92±.08) .312±.003   | (11.73) .462  |
| 4             | (11.89±.08) .468±.003  | (15.70) .618  |
| 5             | (15.85±.10) .624±.004  | (19.66) .774  |
| 6             | (19.81±.10) .780±.004  | (23.62) .930  |
| 7             | (23.77±.10) .936±.004  | (27.58) 1.086 |
| 8             | (27.74±.13) 1.092±.005 | (31.55) 1.242 |
| 9             | (31.70±.13) 1.248±.005 | (35.51) 1.398 |
| 10            | (35.66±.13) 1.404±.005 | (39.47) 1.554 |
| 11            | (39.62±.15) 1.560±.006 | (43.43) 1.710 |
| 12            | (43.59±.15) 1.716±.006 | (47.40) 1.866 |
| 13            | (47.55±.15) 1.872±.006 | (51.36) 2.022 |
| 14            | (51.51±.18) 2.028±.007 | (55.32) 2.178 |
| 15            | (55.47±.18) 2.184±.007 | (59.28) 2.334 |
| 16            | (59.44±.18) 2.340±.007 | (63.25) 2.490 |
| 17            | (63.40±.20) 2.496±.008 | (67.21) 2.646 |
| 18            | (67.36±.20) 2.652±.008 | (71.17) 2.802 |

MATERIAL: HEADER: GLASS FILLED POLYESTER, 94V-0, MOLDED NATURAL (WHITE).  
PIN: BRASS

PLATINGS:  
(102) ELECTRO TIN .000450/.000200 OVER .000200/.000100 COPPER  
(567) SELECT GOLD 15 M.I. MIN, SELECT TIN/LEAD 100 M.I. MIN., OVER NICKEL  
(569) SELECT GOLD 30 M.I. MIN, SELECT TIN/LEAD 100 M.I. MIN., OVER NICKEL  
FOR ADDITIONAL INFORMATION SE SDES-88.

|   |           |   |  |
|---|-----------|---|--|
| REL SHT 5<br>UCP2003-0755<br>11/6/2002 SAMIEC   | E2        | DIMENSIONS SHOWN (METRIC) INCH<br>UNLESS OTHERWISE SPECIFIED<br>TOLERANCES: ANGULAR ± 1/2°<br>INCH METRIC<br>3 PLACE ± ±<br>2 PLACE ± ±<br>1 PLACE ± ±<br>DRAFT WHERE APPLICABLE MUST REMAIN WITHIN DIMENSIONS<br>DRWG. BY SAMIEC CHK'D. BY PATEL<br>APP'D. BY LENZ SCALE : | TITLE<br>FRICITION LOCK HEADER ASS'Y<br>.156 Q BENT SQ PINS, W/O PEGS<br>41792 SERIES DWG.<br>MOLEX INCORPORATED SHEET NO. DATE<br>LISLE, ILL. 60532 U.S.A. 1 OF 6 09/09/87<br>PART NO. DRWG. NO.<br>SEE CHART SDA-41792 |
| REL SHT 4<br>UCR2002-0555<br>12/17/01 SAMIEC    | E1        |   |  |
| ADD PACK SPEC<br>UCR2002-0087<br>7/26/01 SAMIEC | E         |   |  |
| REVISIONS                                       | REVISIONS | FILE NAME<br>S41792X1   | THIS DRAWING CONTAINS INFORMATION THAT IS PROPRIETARY TO MOLEX INC. AND SHOULD NOT BE USED WITHOUT WRITTEN PERMISSION.<br>DIV. SIZE<br>KK C  |

|   |    |
|---|----|
| 6 | E  |
| 5 | E2 |
| 4 | E1 |
| 3 | E  |
| 2 | E  |
| 1 | E2 |

