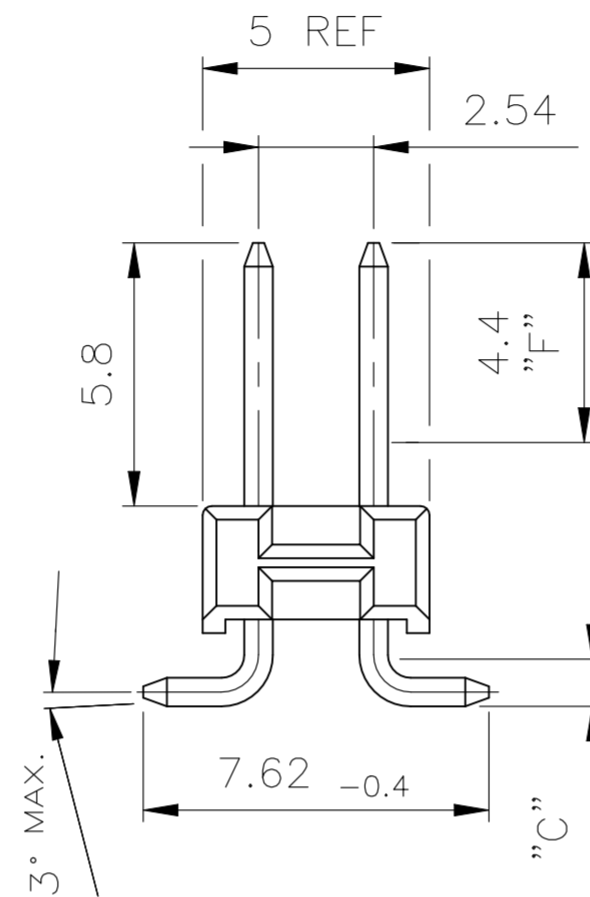
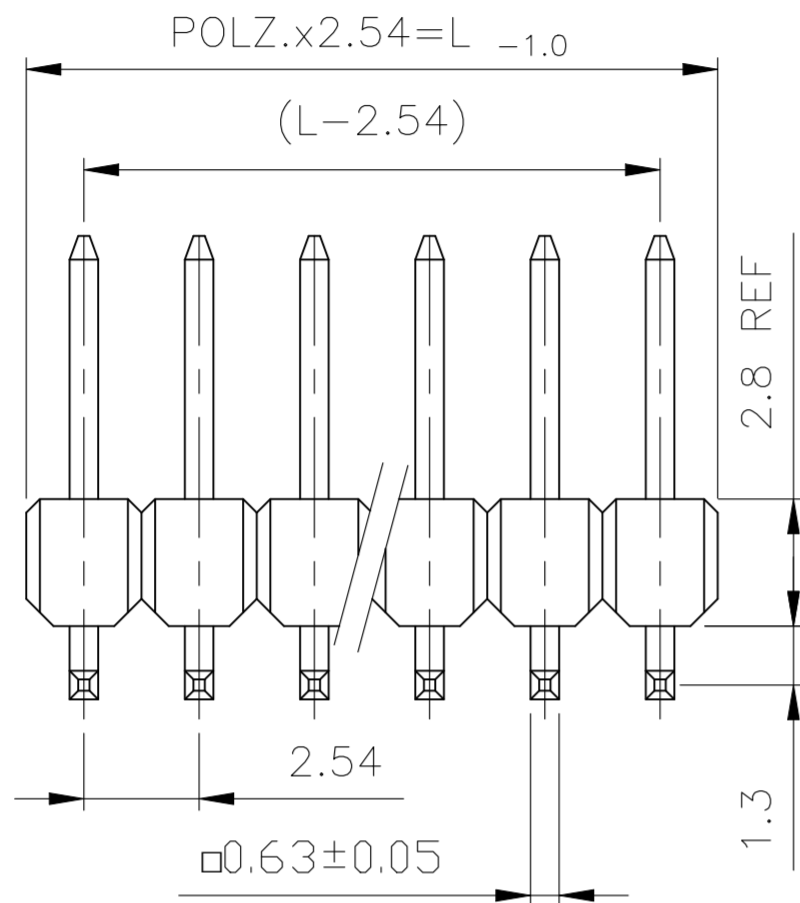
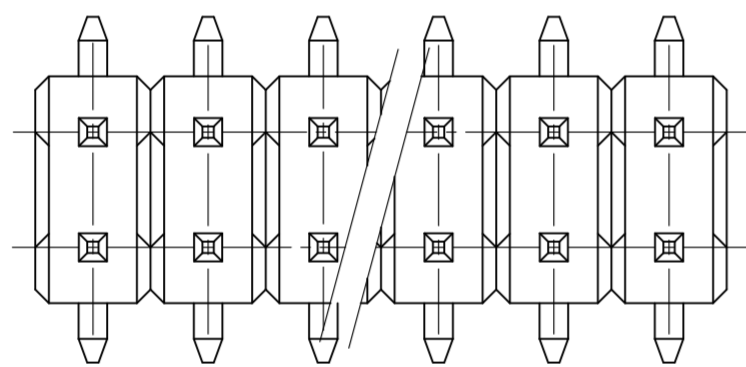
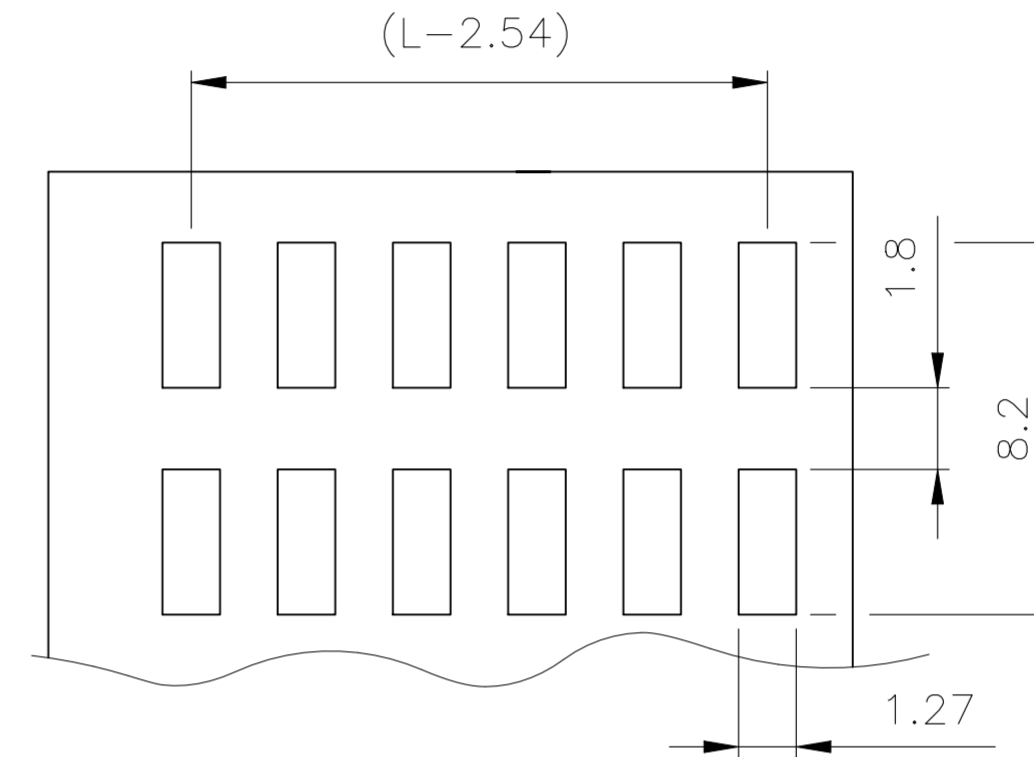


REVISIONS					
P	LTR	DESCRIPTION	DATE	DWN	APVD
C2		NOTE 1 0.76µm PLATING UPDATE (PdNi+AuFLASH)	11JUL2023	BGC	PS

Pos.	L _{-1,0}
2	5,08
3	7,62
4	10,16
5	12,7
6	15,24
7	17,78
8	20,32
9	22,86
10	25,4
11	27,94
12	30,48
13	33,02
14	35,56
15	38,1
16	40,64
17	43,18



EMPFOLHENES LEITERPLATTEN LAYOUT
RECOMMENDED PCB-LAYOUT

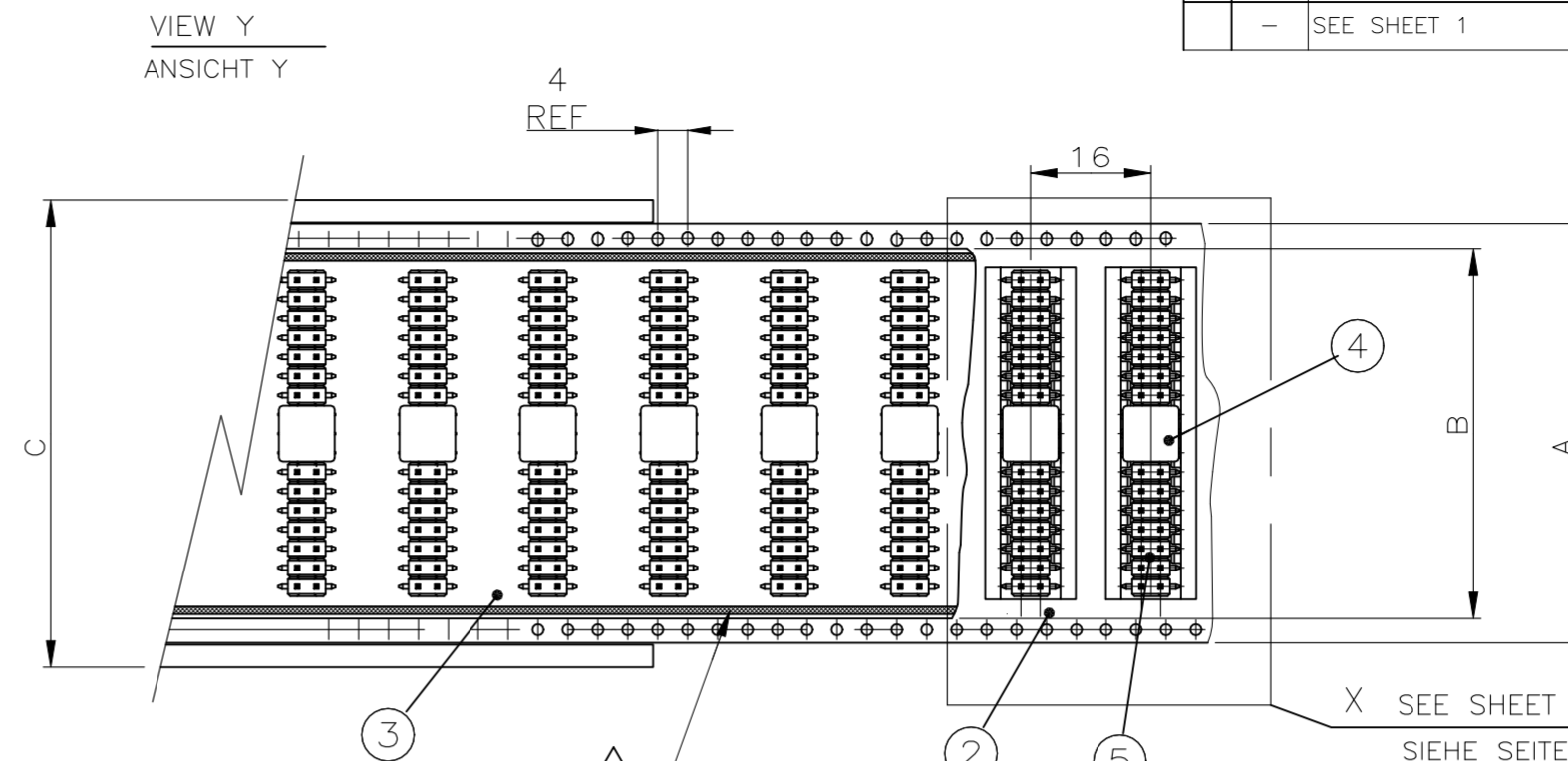
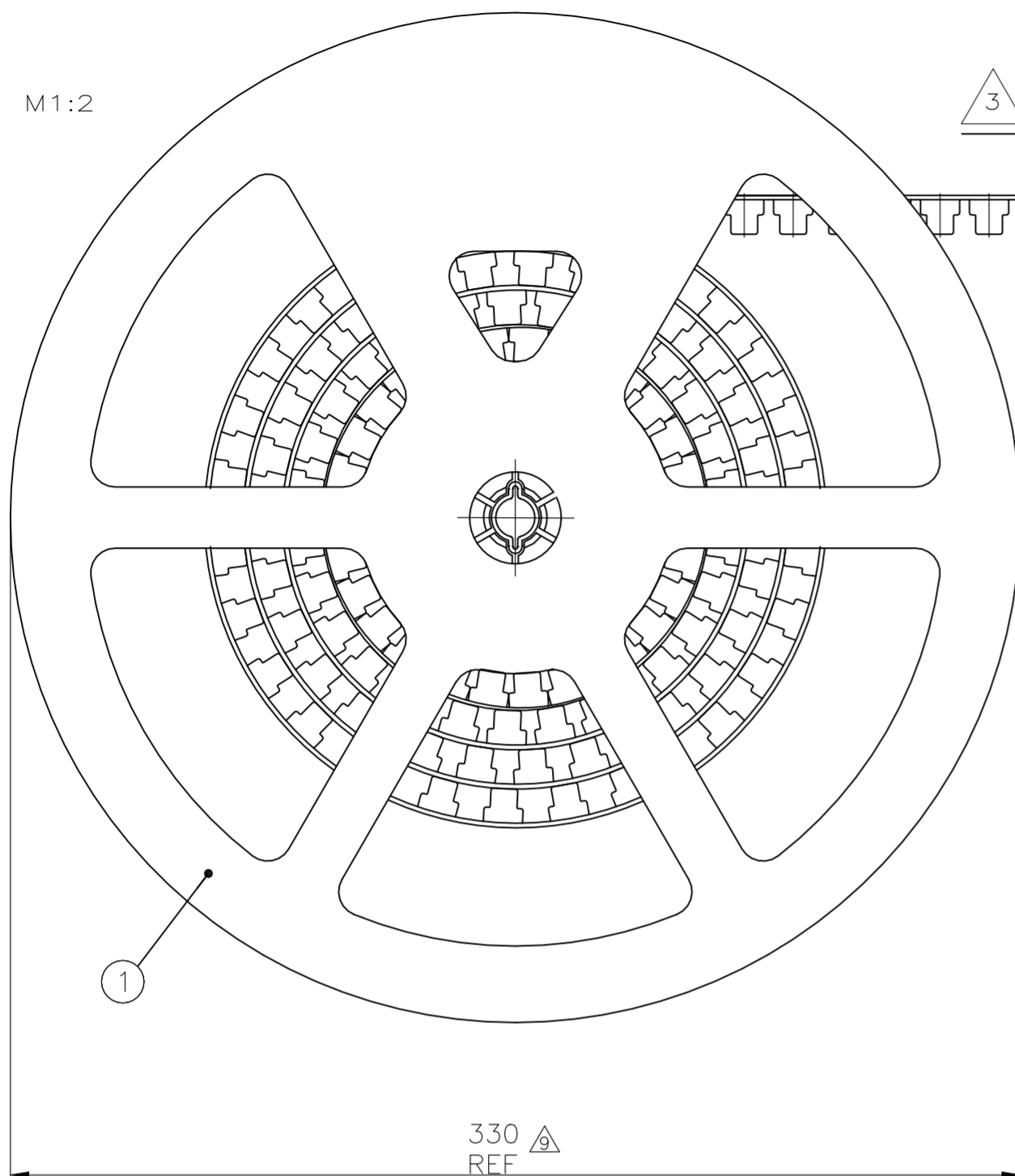


1 MATING SIDE: Min 0.76µm (PdNi + Au FLASH) IN ZONE "F" OVER Min 1.27µm Ni
(Alternative plating - Min 0.76µm Au plating OVER Min 1.27µm Ni)
SOLDER SIDE: WITHIN THE RANGE "C" MIN. 3.0µm TIN OVER Min 1.27µm Ni

KONTAKTSTIFT / CONTACT PIN	CuZn	1	2
STIFTGEHÄUSE / PIN HOUSING	PCT-GV	SCHWARZ / BLACK	1
BENENNUNG EINZELTEIL PART DESCRIPTION	WERKSTOFF MATERIAL	OBERFLÄCHE / FARBE SURFACE / COLOR	SI No

THIS DRAWING IS A CONTROLLED DOCUMENT.		DWN F.REICHARDT 16SEP1998	TE Connectivity Ltd.	
DIMENSIONS: mm		CHK M.SCHAARSCHMIDT 16SEP1998		
TOLERANCES UNLESS OTHERWISE SPECIFIED: TOL ± 0.2		APVD G.FELDMEIER	NAME AMPMODU II PIN HEADER PACKED IN BLISTER	
		PRODUCT SPEC 108-18012	RESTRICTED TO	
MATERIAL SEE TABLE		FINISH SEE TABLE	SIZE A2	CAGE CODE 00779
		WEIGHT -	DRAWING NO C=1241050	SCALE 6:1
		CUSTOMER DRAWING	SHEET 1 of 3	REV C2

P	LTR	DESCRIPTION	DATE	DWN	APVD
-	-	SEE SHEET 1	-	-	-



QTY	REF	DESCRIPTION / BENENNUNG	MATERIAL	SURFACE / COLOR
1		AMPMODU II PIN HEADER,SMD,2x17pos		
1		AMPMODU II STIFTFLEISTE,SMD, 2x17pol.		
1		AMPMODU II PIN HEADER,SMD,2x16pos		
1		AMPMODU II STIFTFLEISTE,SMD, 2x16pol.		
1		AMPMODU II PIN HEADER,SMD,2x15pos		
1		AMPMODU II STIFTFLEISTE,SMD, 2x15pol.		
1		AMPMODU II PIN HEADER,SMD,2x14pos		
1		AMPMODU II STIFTFLEISTE,SMD, 2x14pol.		
1		AMPMODU II PIN HEADER,SMD,2x13pos		
1		AMPMODU II STIFTFLEISTE,SMD, 2x13pol.		
1		AMPMODU II PIN HEADER,SMD,2x12pos		
1		AMPMODU II STIFTFLEISTE,SMD, 2x12pol.		
1		AMPMODU II PIN HEADER,SMD,2x11pos		
1		AMPMODU II STIFTFLEISTE,SMD, 2x11pol.		
1		AMPMODU II PIN HEADER,SMD,2x10pos		
1		AMPMODU II STIFTFLEISTE,SMD, 2x10pol.		
1		AMPMODU II PIN HEADER,SMD,2x9pos		
1		AMPMODU II STIFTFLEISTE,SMD, 2x9pol.		
1		AMPMODU II PIN HEADER,SMD,2x8pos		
1		AMPMODU II STIFTFLEISTE,SMD, 2x8pol.		
1		AMPMODU II PIN HEADER,SMD,2x7pos		
1		AMPMODU II STIFTFLEISTE,SMD, 2x7pol.		
1		AMPMODU II PIN HEADER,SMD,2x6pos		
1		AMPMODU II STIFTFLEISTE,SMD, 2x6pol.		
1		AMPMODU II PIN HEADER,SMD,2x5pos		
1		AMPMODU II STIFTFLEISTE,SMD, 2x5pol.		
1		AMPMODU II PIN HEADER,SMD,2x4pos		
1		AMPMODU II STIFTFLEISTE,SMD, 2x4pol.		
1		AMPMODU II PIN HEADER,SMD,2x3pos		
1		AMPMODU II STIFTFLEISTE,SMD, 2x3pol.		
1		AMPMODU II PIN HEADER,SMD,2x2pos		
1		AMPMODU II STIFTFLEISTE,SMD, 2x2pol.		
1		ADAPTER	LCP	BLACK / SCHWARZ
1		ADAPTER	LCP	BLACK / SCHWARZ
1		COVER TAPE/ABDECKFOLIE B=49.4	PET	TRANSPARENT
1		COVER TAPE/ABDECKFOLIE B=37.4	PET	TRANSPARENT
1		COVER TAPE/ABDECKFOLIE B=25.4	PET	TRANSPARENT
1		COVER TAPE/ABDECKFOLIE B=13.4	PET	TRANSPARENT
1		BLISTER BELT/BLISTERGURT A=56.0	PS	BLACK / SCHWARZ
1		BLISTER BELT/BLISTERGURT A=44.0	PS	BLACK / SCHWARZ
1		BLISTER BELT/BLISTERGURT A=32.0	PS	BLACK / SCHWARZ
1		BLISTER BELT/BLISTERGURT A=16.0	PS	BLACK / SCHWARZ
1		REEL C=62.4	PS	GREY/GRAU
1		REEL C=50.4	PS	GREY/GRAU
1		REEL C=38.4	PS	GREY/GRAU
1		REEL C=22.4	PS	GREY/GRAU

NOTES:

- ⚠ SEE SHEET 1 OF 3
- ⚠ PACKING: 350 PINHEADERS WITH ADAPTER PER REEL
6.8m BLISTER PER REEL
6.8m COVER TAPE
- ⚠ DIRECTION OF THE TOP OF THE REEL
- ⚠ COVER TAPE WITH BLISTER BELT WELDED
- 5. PACKING ACCORDING DIN/IEC 286 RESPECTIVE EIA 481
INCLUSIVE DECLARATIONS ABOUT THE FIRST AND LAST RUNNING
(DIN/IEC 286 PART 3)
- 6. ARRANGEMENT OF PIN HEADERS IN BLISTER BELT SEE SHEET 2 OF 3
- ⚠ PACKING: 300 PINHEADERS WITH ADAPTER PER REEL
6.0m BLISTER PER REEL
6.0m COVER TAPE
- ⚠ OBSOLETE
- ⚠ FOR PN 1-1241050-2 AND 1-1241050-3 PACKAGING REEL DIAMETER IS 380mm REF.

BEMERKUNGEN:

- ⚠ SIEHE BLATT 1 VON 3
- ⚠ VERPACKUNG: 350 STIFTFLEISTEN MIT ADAPTER PRO SPULE
6.8m BLISTER PRO SPULE
6.8m ABDECKFOLIE PRO SPULE
- ⚠ ABWICKELRICHTUNG
- ⚠ ABDECKFOLIE MIT BLISTERGURT VERSCHWEIßt
- 5. VERPACKUNG ENTSPRECHEND DIN/IEC 286 BZW. EIA 481
INKLUSIVE ANGABEN ÜBER DEN VOR- UND NACHLAUF
(DIN/IEC 286 TEIL 3)
- 6. ANORDNUNG DER STIFTFLEISTEN IM BLISTERGURT SIEHE BLATT 2 VON 3
- ⚠ VERPACKUNG: 300 STIFTFLEISTEN MIT ADAPTER PRO SPULE
6.0m BLISTER PRO SPULE
6.0m ABDECKFOLIE PRO SPULE
- ⚠ OBSOLET
- ⚠ FÜR PN 1-1241050-2 UND 1-1241050-3 VERPACKUNGSROLLENMESSER IST 380MM REF

THIS DRAWING IS A CONTROLLED DOCUMENT.

DIMENSIONS: mm		TOLERANCES UNLESS OTHERWISE SPECIFIED:	
		0 PLC ± 0.2	1 PLC ± 0.1
		2 PLC ± 0.1	3 PLC ± -
		4 PLC ± -	ANGLES ± -
MATERIAL SEE TABLE SIEHE TABELLE		FINISH SEE TABLE SIEHE TABELLE	

DWN	F.REICHARDT	16-SEP-98
CHK	M.SCHAARSCHMIDT	16-SEP-98
APVD	G.FELDMEIER	-
PRODUCT SPEC	108-18012	
APPLICATION SPEC	-	
WEIGHT	-	
CUSTOMER DRAWING	SCALE 1:1	SHEET 2 of 3



AMPMODU II PIN HEADER PACKED IN BLISTER

SIZE A2 CAGE CODE 00779 DRAWING NO C=1241050 RESTRICTED TO -