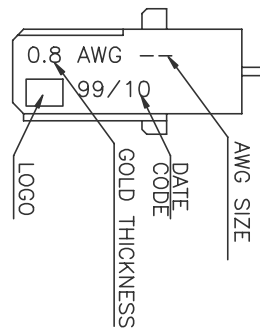
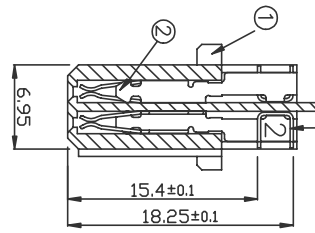
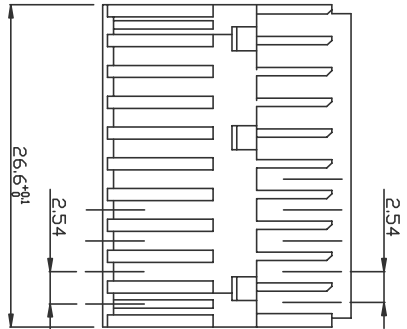


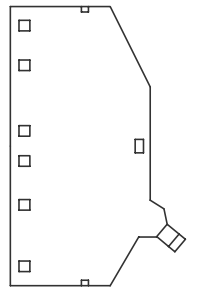


CONNECTOR

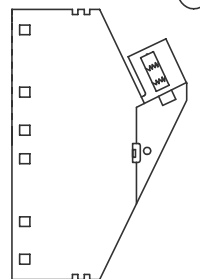


CONTACT ITEM 2 IDENTIFICATION
SEE DESCRIPTION

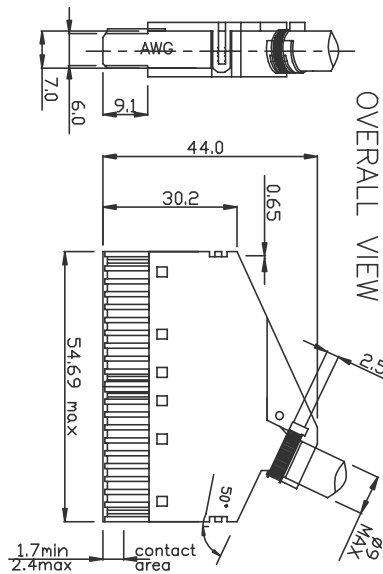
HOOD P4_P6



P5_P7



OVERALL VIEW



PLATING CODE&GOLD THICKNESS	E9 Au:1u	Z4 or Z6 Au:0.8u	DESCRIPTION
PART NUMBER	BPS1B40D0CE9	BPS1B40D0CE9	1AB000490027(LF) BPS1B40D3CZ6
1	1	1	1
2	40	40	2
3	1	1	2
4	1	1	2
5	1	1	2

ITEM	CATALOG N°	QTY. FOR COMPLETE ASSY	DESCRIPTION	DRAWING
1	BPS1B20P9	2	CONTACT FOR AWG30(COLOR=WHITE)	VRW110916
2	BPS1B20P8	2	CONTACT FOR AWG26(COLOR=BLACK)	VRW11172
3	BPS1B40P8	1	CONTACT FOR AWG24(COLOR=WHITE)	VRW13127
4	BPS1B40P7	1	CONTACT FOR AWG24(COLOR=BLACK)	VRW13126
5	BPS1B40P6	1	CONTACT FOR AWG24(COLOR=GREY)	VRW13126
6	BPS1B40P5	1	CONTACT FOR AWG24(COLOR=GREY)	VRW13126
7	BPS1B40P4	1	CONTACT FOR AWG24(COLOR=GREY)	VRW13126
8	BPS1B40P3	1	CONTACT FOR AWG24(COLOR=GREY)	VRW13126
9	BPS1B40P2	1	CONTACT FOR AWG24(COLOR=GREY)	VRW13126
10	BPS1B40P1	1	CONTACT FOR AWG24(COLOR=GREY)	VRW13126

NOTES:
1.MATERIAL:
HOOD:THERMALPLASTIC UL94V0;
BODY:GLASSFIBER REINFORCED THERMALPLASTIC UL94V0;
CONTACTS:PHOSPHOR BRONZE;
PLATING:GOLD OVER 2um NICKEL ON WORKING AREA.
2.MECHANICAL REQUIREMENT:
INSERTION FORCE(EACH CONTACT):<=1N;
WITHDRAWAL FORCE (EACH CONTACT):>=0.19N;
DURABILITY:>=100CYCLES.
3.ELECTRICAL REQUIREMENT:
INITIAL CONTACT RESISTANCE:<=20MILLIOHM;
INSULATION RESISTANCE AFTER TEST:>=10000MEGAOHM;
WITHSTANDING VOLTAGE:>1000Vrms;
OPERATING VOLTAGE:250VAC;
OPERATING CURRENT:1.3A AT 70 DEGREE.
4.IF LEAD FREE P/N, GS-14-920 SHOULD BE APPLIED.
5.THIS PRODUCT MEETS EUROPEAN UNION DIRECTIVES AND OTHER COUNTRY REGULATIONS AS DESCRIBED IN GS-22-008.

mat'l. code	14	tolerances unless otherwise specified	CUSTOMER COPY	FCI	www.fciconnect.com
ltr	ecn no	dr	date	linear	title
A	F03021	DLE	01/29/03	.XX ± 0.30	ASSY 2X(2X10)
B	F04-0107	DLE	01/21/04	±2°	CAPOT & CON.
C	N05-0223	ALLEI	09/05/05	engf TISSERAND	VJW54644
D	N07-0078	HB	03/20/07	chr JF NOTTEAU	DIN
sheet	revision	sheet	scale	1:1	code
index	sheet	sheet	scale	1:1	sheet
					1 of 1