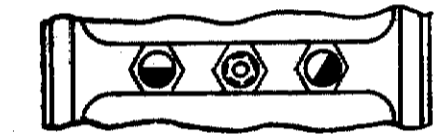
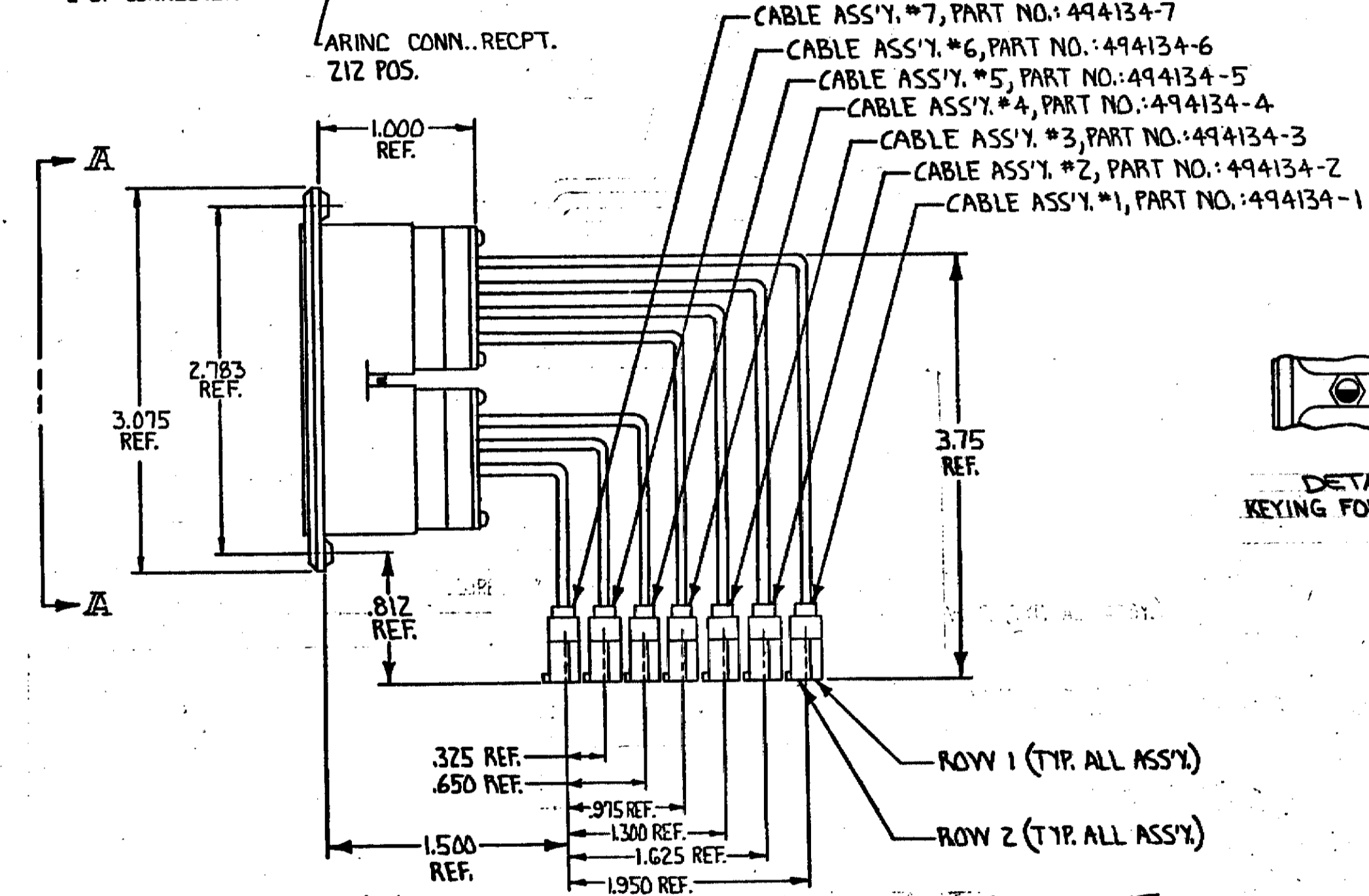
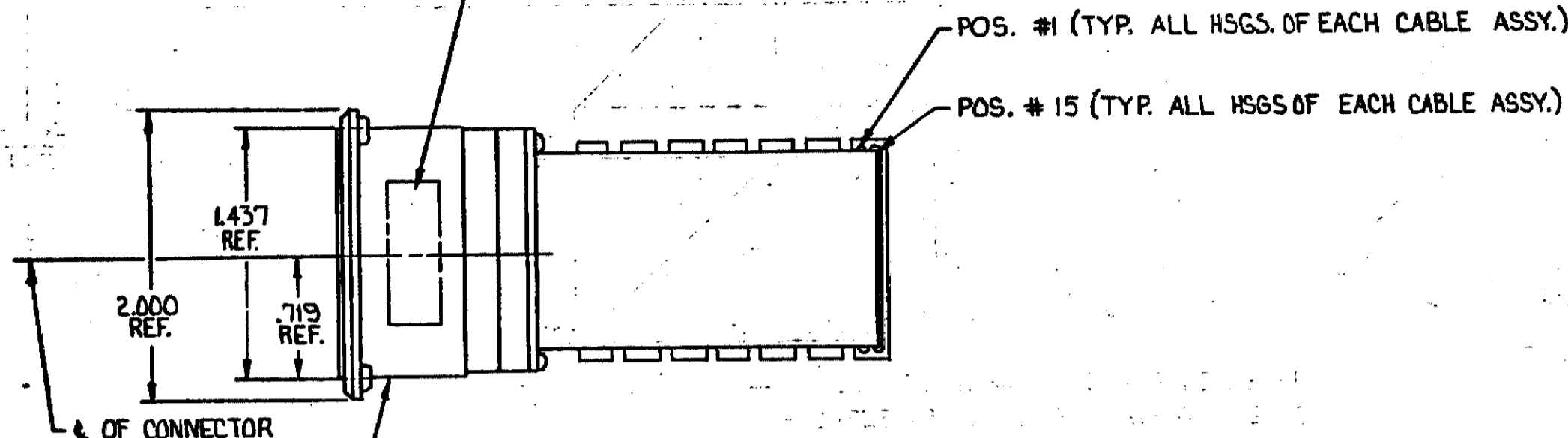


© COPYRIGHT 1980 BY AMP INCORPORATED, HARRISBURG, PA.  
ALL INTERNATIONAL RIGHTS RESERVED. AMP INCORPORATED PRODUCTS  
COVERED BY U. S. AND FOREIGN PATENTS AND/OR PATENTS PENDING.

494131-1 I, AS SHOWN  
494131-2 - SAME AS SHOWN EXCEPT  
FOR KEYING, SEE DETAIL B

AMP AND DATE CODE  
CUSTOMER PART NO. 98571 & ASS'Y.  
PART NO. 847326 INK STAMPED (BLACK)  
.062 ± .015 HIGH CHARS.

| REVISIONS |   |      |     |                      |         |          |
|-----------|---|------|-----|----------------------|---------|----------|
| P         | F | ZONE | LTR | DESCRIPTION          | DATE    | APPROVED |
| 0         | 0 |      |     | RELEASED             |         |          |
| A         |   |      |     | ADD -2 / MPR FFB2-19 | 2-11-82 | MPA      |
| ✓         |   |      |     | TRANS. TO C.P.       | 1-17-85 | MPA      |
| ✓         |   |      |     | REV. PER ECN R-2912  | 6-27-87 | MPA      |
| ✓         |   |      |     | REV/ECN DF-0953      | 7-14-88 | TC       |



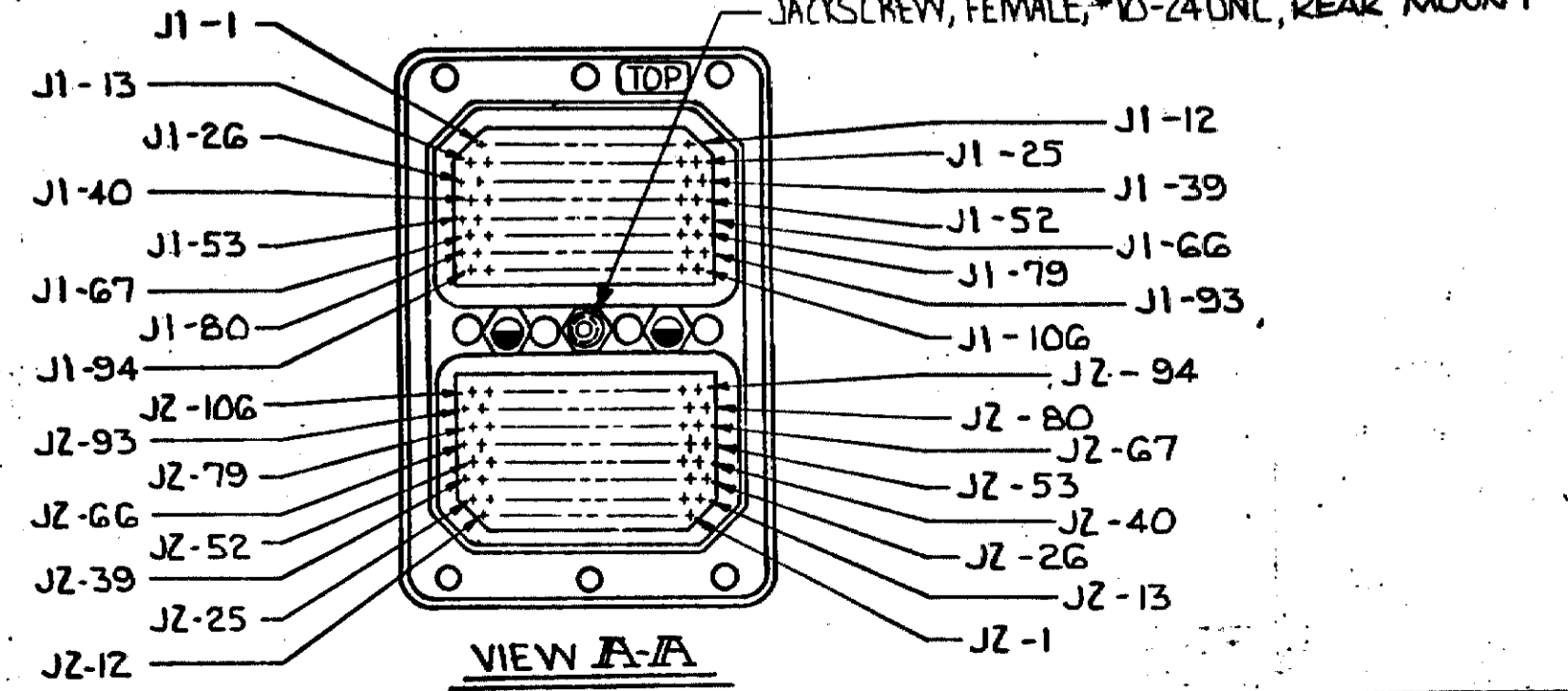
DETAIL B  
KEYING FOR -2 ASSY ONLY

| JZ-39 THRU JZ-26 | 1 THRU 14  | 2  | 7 |
|------------------|------------|----|---|
| JZ-52            | JZ-40 16   | 28 | 1 |
| JZ-66            | JZ-53 1    | 14 | 2 |
| JZ-79            | JZ-67 16   | 28 | 1 |
| JZ-93            | JZ-80 1    | 14 | 2 |
| JZ-106           | JZ-94 16   | 28 | 1 |
| J1-94            | J1-106 1   | 13 | 2 |
| J1-80            | J1-93 15   | 28 | 1 |
| J1-67            | J1-79 1    | 13 | 2 |
| J1-53            | J1-66 15   | 28 | 1 |
| J1-40            | J1-52 1    | 13 | 2 |
| J1-26            | J1-39 15   | 28 | 1 |
| J1-13            | J1-25 1    | 13 | 2 |
| J1-1 THRU J1-12  | 16 THRU 27 | 1  |   |

CABLE DESTINATION TABLE

| ARINC CONN. POS. | HSG. POS. | ROW | NO. |
|------------------|-----------|-----|-----|
| TO               | FROM      |     |     |

CUSTOMER DRAWING



|  |             |  |               |
|--|-------------|--|---------------|
| UNLESS OTHERWISE SPECIFIED DIMENSIONS ARE IN INCHES.<br>TOLERANCES ON:<br>DECIMALS ±<br>ANGLES ± | CONTRACT NO | AMP INCORPORATED<br>Harrisburg, Pa.                                  |               |
|  | DR          | 4-24-80  | NAME          |
| MATERIAL<br>ARINC CONN. SHELL: ALUMINUM  | APPD        | FLEXIBLE FLAT CABLE ASSY.,<br>W/(7) RECPT. CONN'S. & (1) ARINC CONN. |               |
|  | OTHER APPD  | SIZE   | CODE IDENT NO |
| FINISH<br>ARINC CONN. SHELL:<br>CADMIUM PLATED   | DSGN APPD   | C  | 00779         |
|  | OTHER APPD  | DRAWING NO   | 494131        |
| SCALE  |             | SHEET  |               |