

SURFBOARDS®



THE BREADBOARDING MEDIUM FOR **SURFACE MOUNT™**

33000 SERIES APPLICATION SPECIFIC ADAPTERS

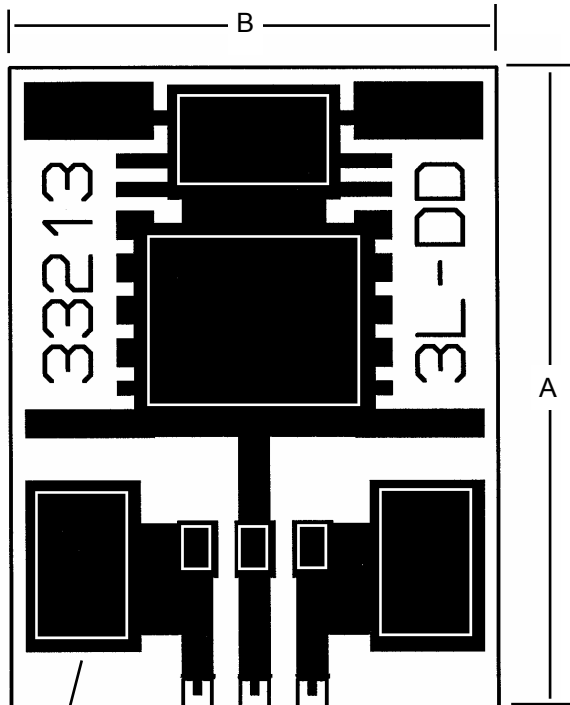
IDS33213

REV 1-2012

MODEL **33213**

FOR TO-263AB 3-LEAD D PACKAGE

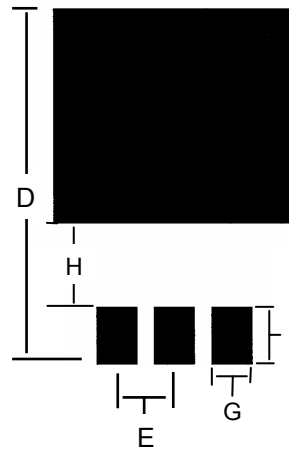
HIGHER CURRENT APPLICATIONS



LARGE CIRCUIT LANDS PROVIDE CLIP TO, OR SOLDER TO CONNECTION POINTS FOR HIGHER CURRENT APPLICATIONS

SINGLE-IN-LINE (SIP) PINS PROVIDE INSTRUMENTATION CONNECTIONS

NOTE: CIRCUIT FOILS OR PINS MAY NOT BE SUITABLE FOR HIGHER RATED CURRENT OPERATION. EXTREME TEMPERATURE RISE MAY CAUSE FAILURE.



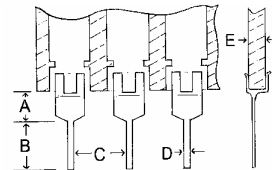
DEVICE MOUNTING FOOTPRINT

PINS PROVIDE INSTRUMENT CONNECTION POINTS. LARGE LANDS CAN BE CLIPPED ONTO OR SOLDERED TO FOR HIGHER CURRENT APPLICATIONS.



RoHS Compliant EC 2002/95

PIN SPECIFICATIONS / TOLERANCES



In Inches

A	= .062 +/- .006
B	= .130 +/- .010
C	= .100 +/- .005
D	= .020 +/- .004
E	= .031 +/- .005

FIG.	INCHES	MM
A	1.125	28.57
B	.850	21.59
C	.100	2.54
D	.625	15.87
E	.100	2.54
F	.100	2.54
G	.070	1.77
H	.150	3.81

BOARD SPECIFICATIONS

BOARD MATERIAL: .8mm, +/- .13mm .031in +/- .005 in. Thick G-10 FR-4 Glass Epoxy or equivalent.
CIRCUITS: 1 oz. Copper with RoHS compliant Lead Free solder coating. Patten Position on board +/- .5mm .020in.

TOLERANCES: If not noted are +/- 20%. Nominal values are given. Controlling unit is Millimeters. Values rounded to nearest decimal. Slight Variations due to manufacturing process can occur.

Copyright 1997-2012 by Capital Advanced Technologies, Inc. All rights reserved. Surfboards is a registered trademark of Capital Advanced Technologies, Inc. The Breadboarding medium for surface mount, and the Leaf Circuit Logo are trademarks of Capital Advanced Technologies, Inc. All other trademarks are the property of their respective owners. Specifications, availability, and price is subject to change without notice. All information given is believed to be accurate but is not guaranteed. The user of information given or products represented by such information is responsible for determining the suitability of said information or products for a given purpose. No inducement is intended or permission granted for infringement of any patent or unauthorized use of any intellectual property of Capital Advanced Technologies or others.

CAPITAL ADVANCED TECHNOLOGIES, INC.

CAROL STREAM, ILLINOIS. USA.

PHONE 630-690-1696

WWW.CapitalAdvanced.Com

FAX 630-690-2498