

## IP67 SEALED 8 SERIES CABLE ASSEMBLY



### MCP/MCR SERIES

#### MCP

Mates with:  
MCR(K), MCP(K)

MCP Kit:  
MCPK

#### MCR

Mates with:  
MCP(K)

MCR Kit:  
MCRK

| MCP | 8 | LEAD STYLE                       | PLATING OPTION                                     | LENGTH  | END 1 OPTION  | END 2 OPTION   |
|-----|---|----------------------------------|--|---|---|--|
|     |   | -02<br>= 12 positions,<br>28 AWG | -L<br>= 10 μ"<br>(0.25 μm)<br>Gold on contact area | -01.00<br>= 1 meter<br><br>-02.00<br>= 2 meters<br>Standard lengths | -T<br>= Terminal<br><br>-S<br>= Socket<br>(Not available with End 2 -T) | -T<br>= Terminal<br><br>-S<br>= Socket<br><br>-BC<br>= Blunt Cut |

### SPECIFICATIONS

**Insulator Material:**  
PPS

**Terminal Material:**  
Phosphor Bronze (MCR)

**Contact Material:**  
Phosphor Bronze (MCR)

**Operating Temp Range:**  
-20 °C to +80 °C

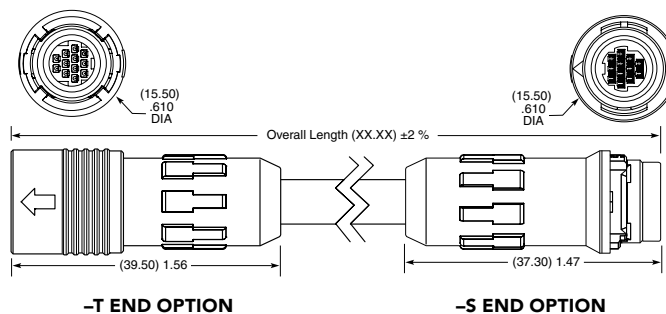
**Gasket Material:**  
Silicone (MCP)  
Neoprene Rubber (MCR)

**Spring Material:**  
Stainless Steel (MCP)

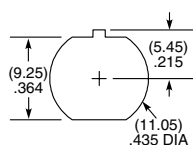
**Coupling Ring Spacer:**  
PBT (MCP)

**Cable Clamp:**  
POM (MCP)

**Lock Washer:**  
Phosphor Bronze,  
Ni plated (MCR)  
**Hex Nut:**  
Brass, Ni plated (MCR)



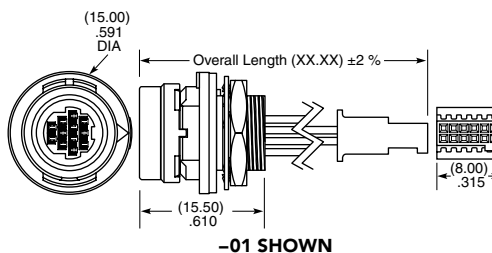
### PANEL OPENING



| MCR | 8 | LEAD STYLE                       | PLATING OPTION                                     | LENGTH   | END 1 OPTION   | END 2 OPTION  |
|-----|---|----------------------------------|--|--|----------------|---|
|     |   | -02<br>= 12 positions,<br>28 AWG | -L<br>= 10 μ"<br>(0.25 μm)<br>Gold on contact area | -00.25<br>= 0.25 meter<br><br>-00.50<br>= 0.50 meter<br>Standard lengths | -S<br>= Socket | -BC<br>= Blunt Cut<br>(Color wire only,<br>see chart)<br><br>-01<br>= 2x6 SFSD<br>(Pin 1 to Pin 1)<br>(Black wire only) |

### -BC CABLE COLOR CODING

| PIN | COLOR       |
|-----|-------------|
| 1   | BROWN       |
| 2   | RED         |
| 3   | ORANGE      |
| 4   | YELLOW      |
| 5   | GREEN       |
| 6   | DARK BLUE   |
| 7   | VIOLET      |
| 8   | GRAY        |
| 9   | WHITE       |
| 10  | BLACK       |
| 11  | GREEN/BLACK |
| 12  | TAN         |



### DUST CAPS

-S (socket) = DCA-MCR-8  
-T (terminal) = DCA-MCP-8

#### Notes:

Samtec's MCR, MCP Seires is dual soruced by Hirose Electric Co. LTD

Some lengths, styles and options are non-standard, non-returnable