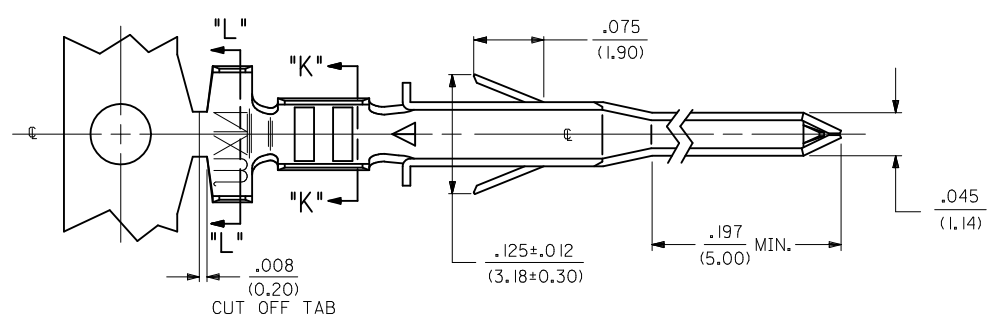


RoHS

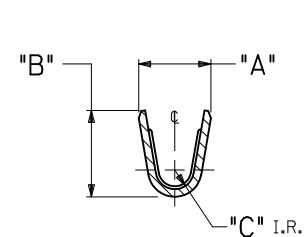
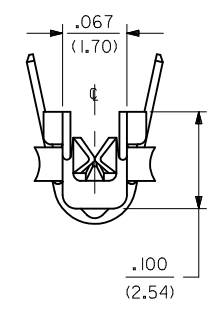
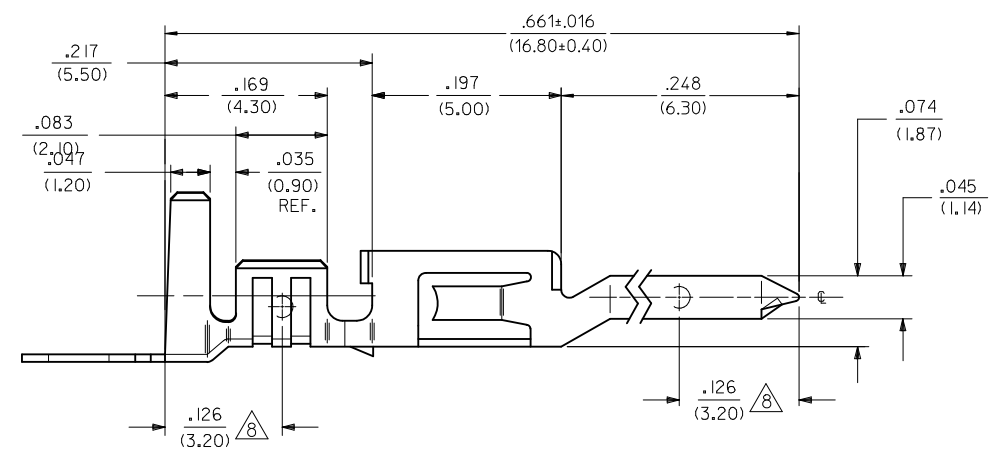
COMPLIANT



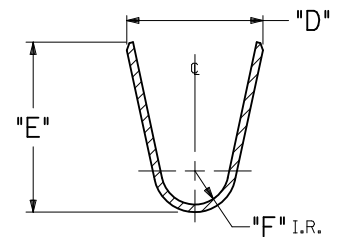
- NOTES:
- MATERIAL:
    - BRASS, .0080/(0.203) THICK
    - PHOS. BRONZE, .0080/(0.203) THICK
  - FINISH:
    - .000100/(0.00254) MIN. BRIGHT TIN OVER .000050/(0.00127) MIN NICKEL OVERALL.
    - .000030/(.00076) MIN SELECT GOLD IN CONTACT AREA AND .000100/(0.00254) MIN SELECT MATTE TIN IN CRIMP AREA OVER .000050/(0.00127) MIN NICKEL OVERALL.

GOLD PLATING RECOMMENDED FOR APPLICATIONS WHERE FRETTING CORROSION IS A CONCERN.

- PRODUCT SPECIFICATION: PS-460083-001 (JR.), PS-46083-002 (BMI), PS-46083-003 (TPA)
- PACKAGE SPECIFICATION: PK-46134-001 FOR CHAIN TERMINALS  
PK-5556-003 FOR LOOSE TERMINALS.
- TERMINAL FOR USE WITH MOLEX PLUG HOUSINGS 5559, 42475, 43770 AND 30068.
- THIS TERMINAL IS DESIGNED FOR SINGLE WIRE CRIMPING.
- WHEN TERMINALS ARE INSTALLED IN THE HOUSINGS, THE WIRES ARE TO BE DRESSED IN SUCH A MANNER TO ALLOW THE TERMINALS TO FLOAT FREELY IN THE POCKETS.
- MEASURING POINT FOR PLATING THICKNESS.



SECT. "K-K"  
(VIEW ROTATED 90° CW)

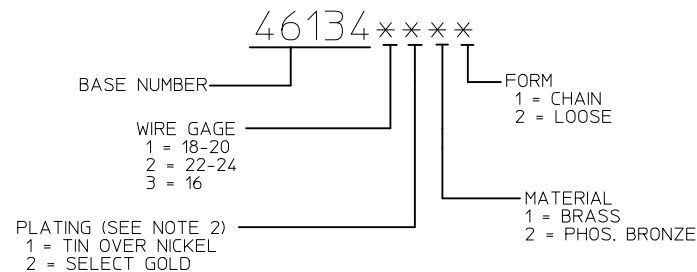


SECT. "L-L"  
(VIEW ROTATED 90° CW)

<b>MODIFIED NOTES</b> EC NO: UCP2010-0471 DRAWN: JAGUILAR 2009/12/23 CHKD: BELL 2009/12/23 APPR: FSMITH 2009/12/28	QUALITY SYMBOLS ▽=0 ▽=0	GENERAL TOLERANCES (UNLESS SPECIFIED)		DIMENSION STYLE IN/MM	SCALE METRIC	DESIGN UNITS METRIC	THIRD ANGLE PROJECTION
		4 PLACES ± --- ± --- 3 PLACES ± --- ± .010 2 PLACES ± 0.25 ± .015 1 PLACE ± 0.38 ± ---	mm INCH	DRAWN BY DATE TGREGORI 2005/10/25	TITLE MALE CRIMP TERMINAL MINI-FIT PLUS SERIES		
		ANGULAR ±1/2°		CHECKED BY DATE JCOMERCI 2005/10/25	APPROVED BY DATE JCOMERCI 2005/10/25	MOLEX MOLEX INCORPORATED	
		DRAFT WHERE APPLICABLE MUST REMAIN WITHIN DIMENSIONS		MATERIAL NO. SEE SHHET 2	DOCUMENT NO. SD-46134-001		SHEET NO. 1 OF 2

FORMED ITEM NO.	MATERIAL	PLATING	FORM	WIRE GAGE	RANGE OF INSULATION DIA.	DIM. "A"	DIM. "B"	DIM. "C"	DIM. "D"	DIM. "E"	DIM. "F"
461342111	1	1	CHAIN	22-24	.035-.071 (0.90-1.80)	.071±.012 (1.80±0.30)	.065±.016 (1.65±0.40)	.016 (0.40)	.091±.012 (2.30±0.30)	.091±.016 (2.30±0.40)	.024 (0.60)
461342112			LOOSE								
461341111			CHAIN	18-20	.051-.122 (1.30-3.10)	.075±.012 (1.90±0.30)	.091±.016 (2.30±0.40)	.020 (0.50)	.142±.012 (3.60±0.30)	.177±.016 (4.50±0.40)	.035 (0.90)
461341112			LOOSE								
461343111			CHAIN	16	.122 (3.10) MAX	.091±.012 (2.30±0.30)	.106±.016 (2.70±0.40)	.024 (0.60)	.142±.012 (3.60±0.30)	.177±.016 (4.50±0.40)	.035 (0.90)
461343112			LOOSE								
461342211		2	CHAIN	22-24	.035-.071 (0.90-1.80)	.071±.012 (1.80±0.30)	.065±.016 (1.65±0.40)	.016 (0.40)	.091±.012 (2.30±0.30)	.091±.016 (2.30±0.40)	.024 (0.60)
461342212			LOOSE								
461341211			CHAIN	18-20	.051-.122 (1.30-3.10)	.075±.012 (1.90±0.30)	.091±.016 (2.30±0.40)	.020 (0.50)	.142±.012 (3.60±0.30)	.177±.016 (4.50±0.40)	.035 (0.90)
461341212			LOOSE								
461343211			CHAIN	16	.122 (3.10) MAX	.091±.012 (2.30±0.30)	.106±.016 (2.70±0.40)	.024 (0.60)	.142±.012 (3.60±0.30)	.177±.016 (4.50±0.40)	.035 (0.90)
461343212			LOOSE								
461342121	2	1	CHAIN	22-24	.035-.071 (0.90-1.80)	.071±.012 (1.80±0.30)	.065±.016 (1.65±0.40)	.016 (0.40)	.091±.012 (2.30±0.30)	.091±.016 (2.30±0.40)	.024 (0.60)
461342122			LOOSE								
461341121			CHAIN	18-20	.051-.122 (1.30-3.10)	.075±.012 (1.90±0.30)	.091±.016 (2.30±0.40)	.020 (0.50)	.142±.012 (3.60±0.30)	.177±.016 (4.50±0.40)	.035 (0.90)
461341122			LOOSE								
461343121			CHAIN	16	.122 (3.10) MAX	.091±.012 (2.30±0.30)	.106±.016 (2.70±0.40)	.024 (0.60)	.142±.012 (3.60±0.30)	.177±.016 (4.50±0.40)	.035 (0.90)
461343122			LOOSE								
461342221		2	CHAIN	22-24	.035-.071 (0.90-1.80)	.071±.012 (1.80±0.30)	.065±.016 (1.65±0.40)	.016 (0.40)	.091±.012 (2.30±0.30)	.091±.016 (2.30±0.40)	.024 (0.60)
461342222			LOOSE								
461341221			CHAIN	18-20	.051-.122 (1.30-3.10)	.075±.012 (1.90±0.30)	.091±.016 (2.30±0.40)	.020 (0.50)	.142±.012 (3.60±0.30)	.177±.016 (4.50±0.40)	.035 (0.90)
461341222			LOOSE								
461343221			CHAIN	16	.122 (3.10) MAX	.091±.012 (2.30±0.30)	.106±.016 (2.70±0.40)	.024 (0.60)	.142±.012 (3.60±0.30)	.177±.016 (4.50±0.40)	.035 (0.90)
461343222			LOOSE								

# LEGEND



RoHS COMPLIANT

SEE SHEET 1 EC NO: UCP2010-0471 DRAWN: JAGUILAR 2009/12/23 CHKD: JELL 2009/12/23 APPR: FSMITH 2009/12/28	QUALITY SYMBOLS	GENERAL TOLERANCES (UNLESS SPECIFIED)	DIMENSION STYLE	SCALE	DESIGN UNITS	THIRD ANGLE PROJECTION	
	▽=0		mm INCH	10:1	METRIC		
	▽=0		4 PLACES ± --- ± ---	DRAWN BY DATE	MALE CRIMP TERMINAL MINI-FIT PLUS SERIES		
			3 PLACES ± --- ± .010	TGREGORI 2005/10/25	MOLEX INCORPORATED		
		2 PLACES ± 0.25 ± .015	CHECKED BY DATE	SD-46134-001			
		1 PLACE ± 0.38 ± ---	JCOMERC I 2005/10/25	SHEET NO. 2 OF 2			
		ANGULAR ±1/2°	APPROVED BY DATE	THIS DRAWING CONTAINS INFORMATION THAT IS PROPRIETARY TO MOLEX INCORPORATED AND SHOULD NOT BE USED WITHOUT WRITTEN PERMISSION			
			JCOMERCJ 2005/10/25				
			MATERIAL NO.				
			SIZE				