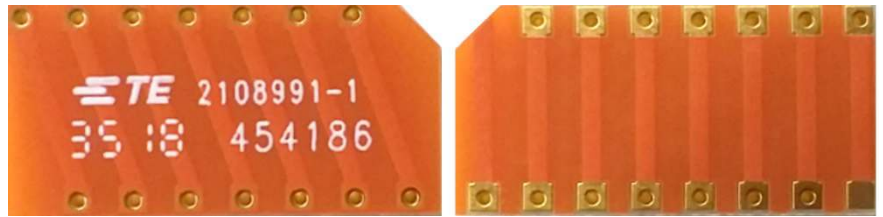


698– 960 MHz Helical Antenna for IoT/ LPWAN/ ISM

Part Number: 2108991-1



Product Facts

- Global LPWAN/ ISM band antenna
- Easy tuning capability
- 4 different frequency bands can be selected, determined by PCB pad layout
- Available in Tape & Reel packaging
- Minimum matching circuits required
- Bandwidth and performance is dependent on ground plane size

Specifications

- Frequency Range(MHz) — 698-960
- Peak Gain — See the below chart
- VSWR — < 3.5:1
- Azimuth Beam width — Omni directional
- Power Handling — 10 Watt cw
- Feed Point Impedance — 50 ohms
- Size — 18.00mm x 9.00mm x 1.57mm
- Weight — <0.5g
- Mounting — Surface-mount technology
- Keep Out Area — See diagram on page 7
- Operating Temperature — -40~+85°C

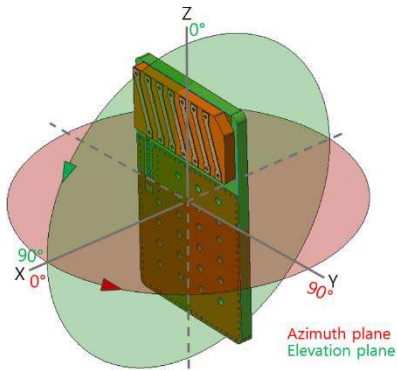
Summary data

	698 – 746 MHz	734 – 746 MHz	787 – 894 MHz	824 – 960 MHz
Figure				
VSWR				
Efficiency [%]				
Peak Gain [dBi]	+ 0.2	+ 0.1	+ 0.5	+ 1.2

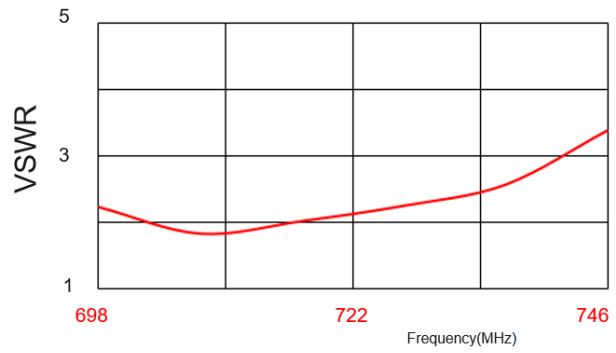
698–960 MHz Helical Antenna for IoT/LPWAN/ ISM

698-746MHz

Test Orientation in Free Space

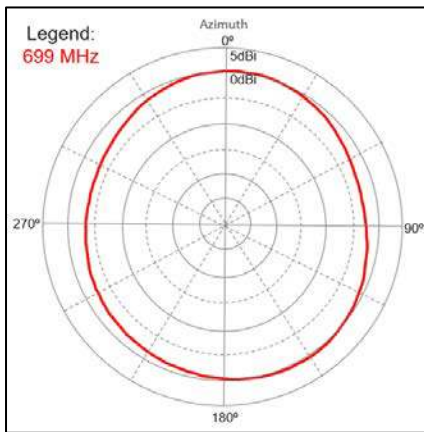


VSWR

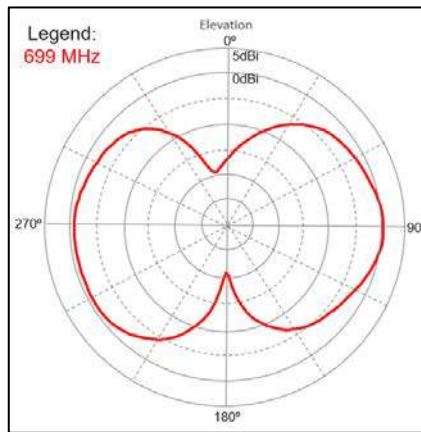


Azimuth

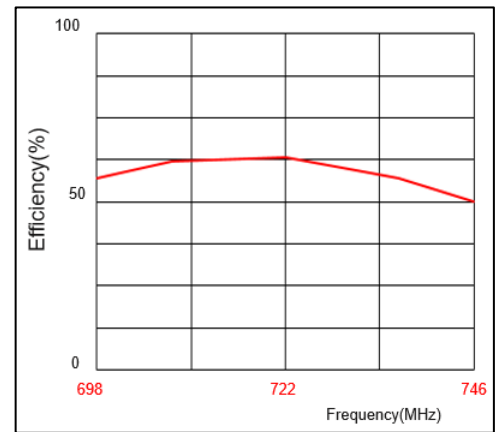
698-746MHz



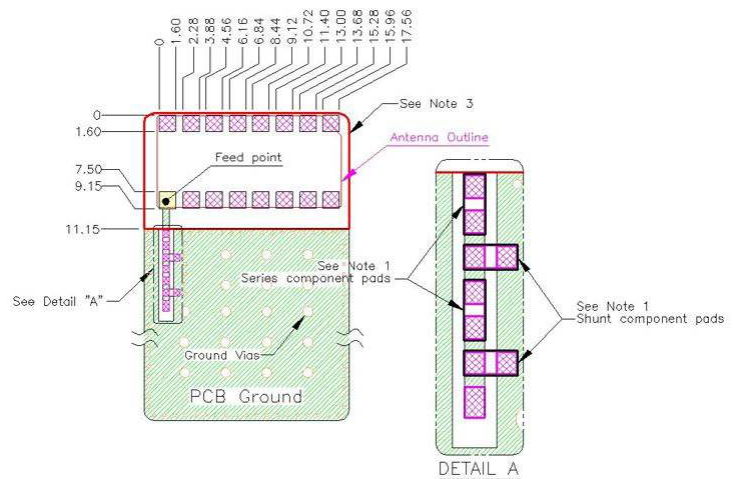
Elevation



Efficiency



Mounting Guide



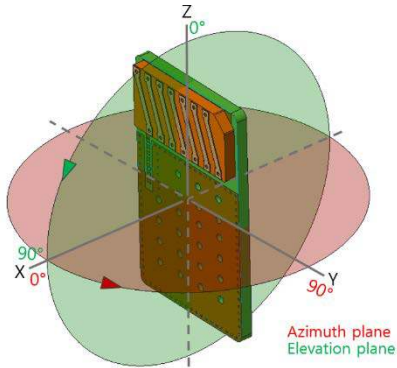
- NOTES: 1. Suggested matching component pads.
 2. Antenna must be mounted on the edge of PCB.
 3. No copper allowed in designated area on all PCB layer -
 4. For more information please call TE.

Dimensions: mm
 Diagram is not to scale

698–960 MHz Helical Antenna for IoT/ LPWAN/ ISM

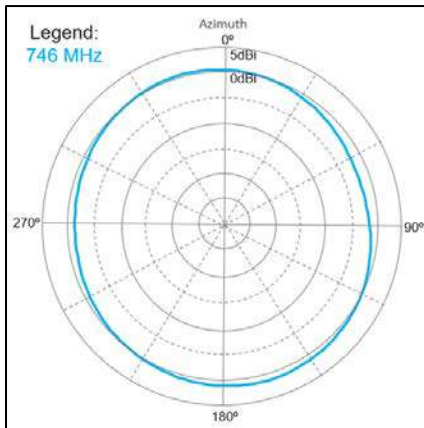
734-746MHz

Test Orientation in Free Space

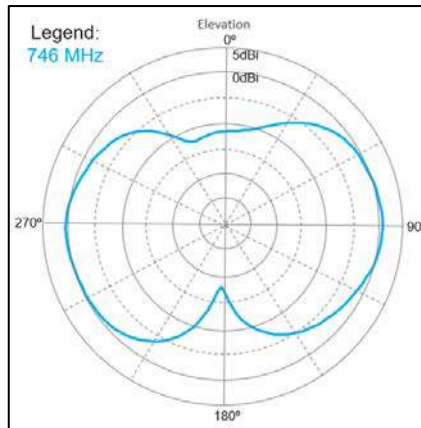


Azimuth

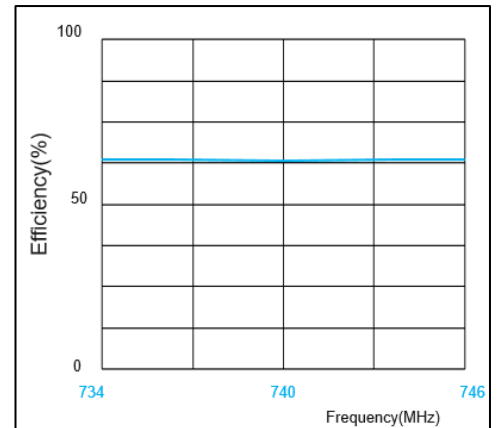
734-746MHz



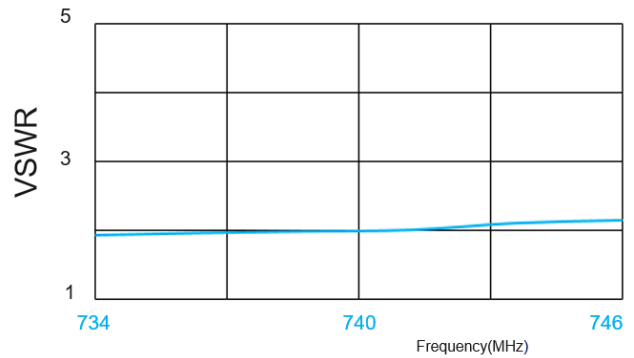
Elevation



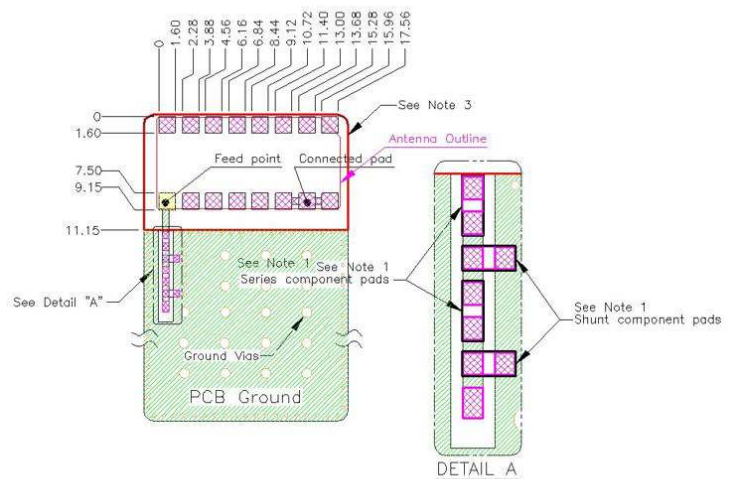
Efficiency



VSWR



Mounting Guide



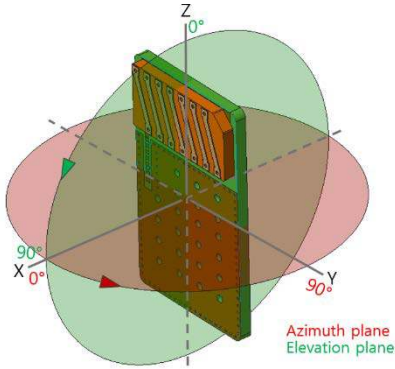
- NOTES: 1. Suggested matching component pads.
 2. Antenna must be mounted on the edge of PCB.
 3. No copper in designated area on all PCB layer -
 4. For more information please call TE.

Dimensions: mm
 Diagram is not to scale

698–960 MHz Helical Antenna for IoT/ LPWAN/ IS

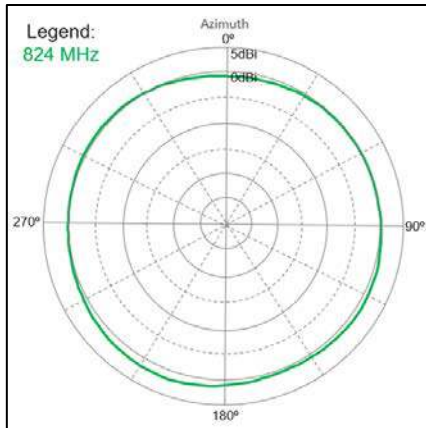
787-894MHz

Test Orientation in Free Space

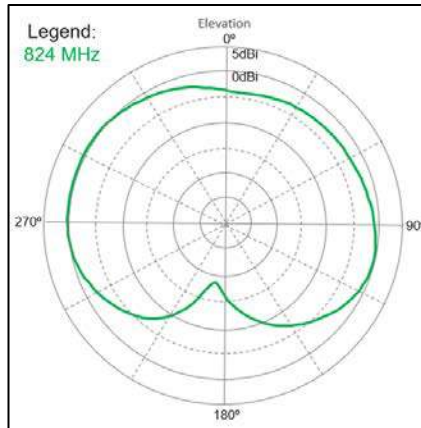


Azimuth

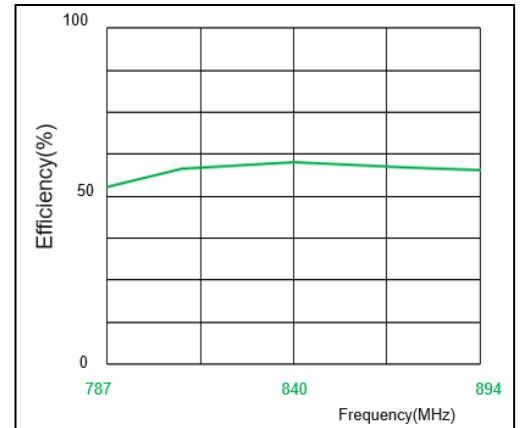
787-894MHz



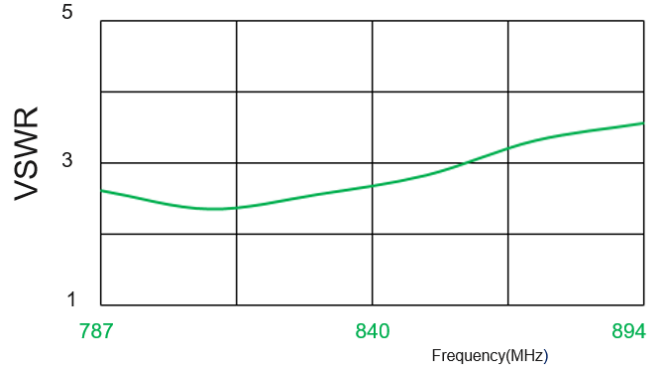
Elevation



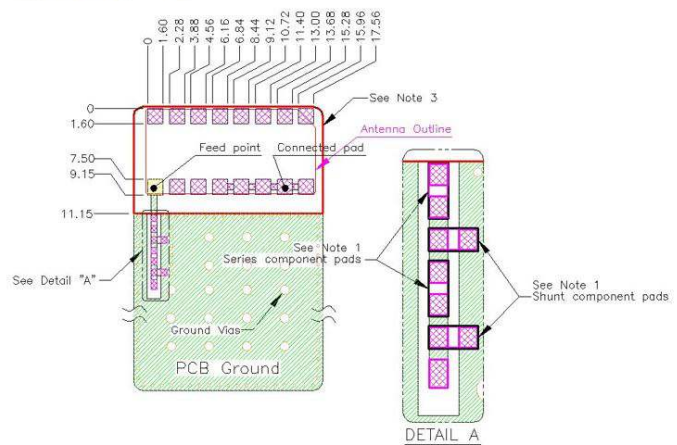
Efficiency



VSWR



Mounting Guide



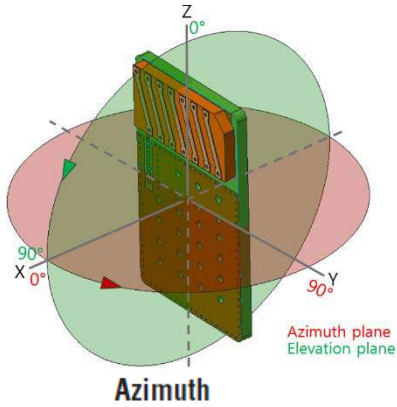
- NOTES: 1. Suggested matching component pads.
 2. Antenna must be mounted on the edge of PCB.
 3. No copper allowed in designated area on all PCB layer -
 4. For more information please call TE.

Dimensions: mm
 Diagram is not to scale

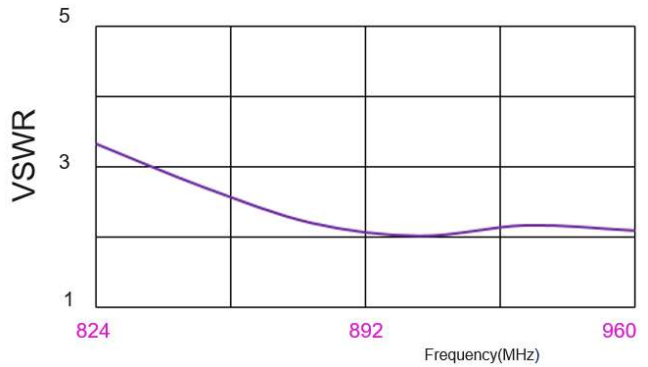
698–960 MHz Helical Antenna for IoT (includes frequencies of IoT solutions) (Continued)

824-960MHz

Test Orientation in Free Space



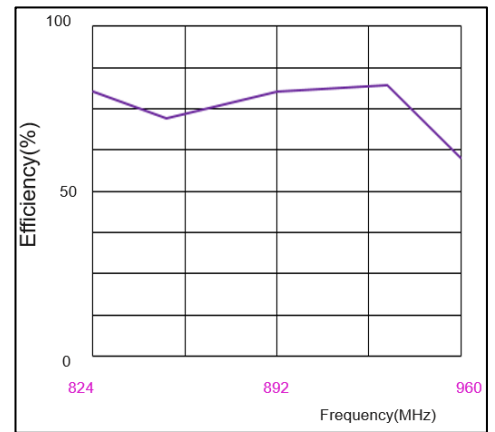
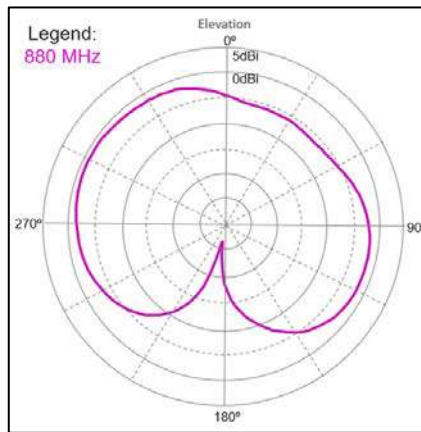
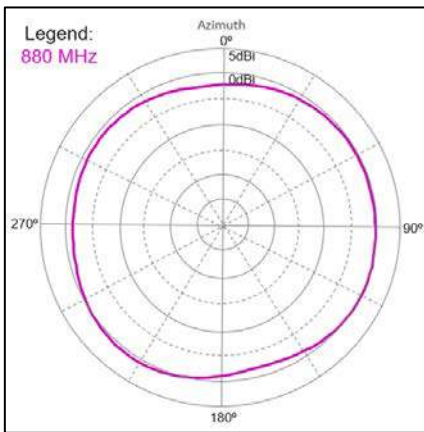
VSWR



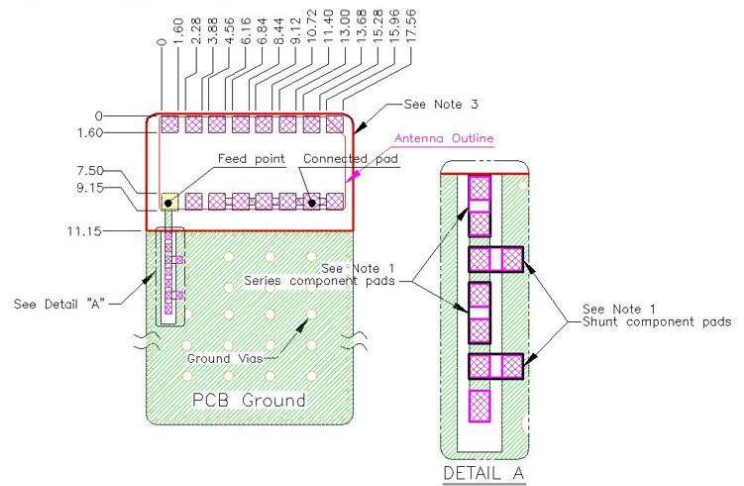
Elevation

Efficiency

824-960MHz



Mounting Guide

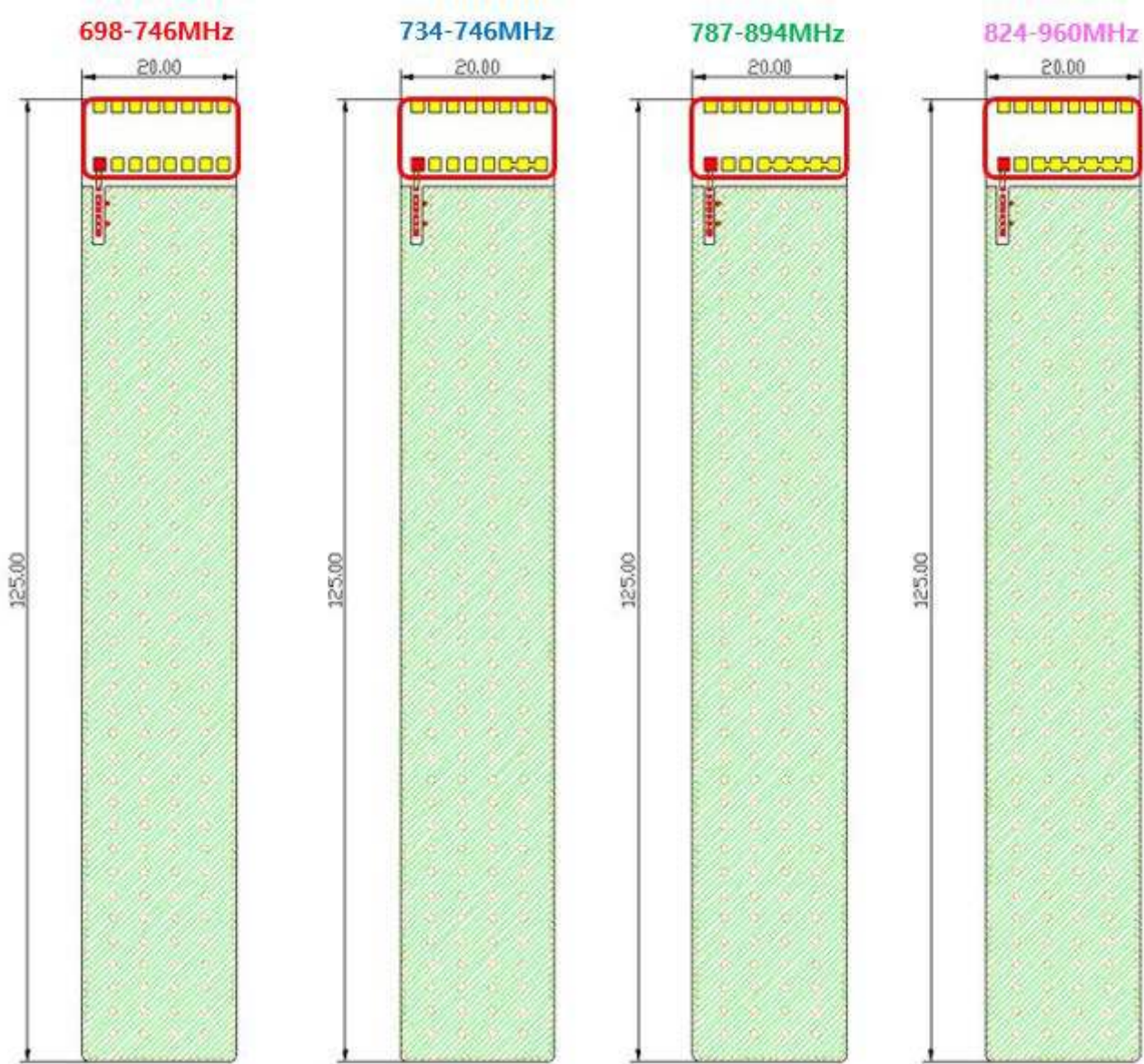


- NOTES: 1. Suggested matching component pads.
 2. Antenna must be mounted on the edge of PCB.
 3. No copper allowed in designated area on all PCB layer -
 4. For more information please call TE.

Dimensions: mm
 Diagram is not to scale

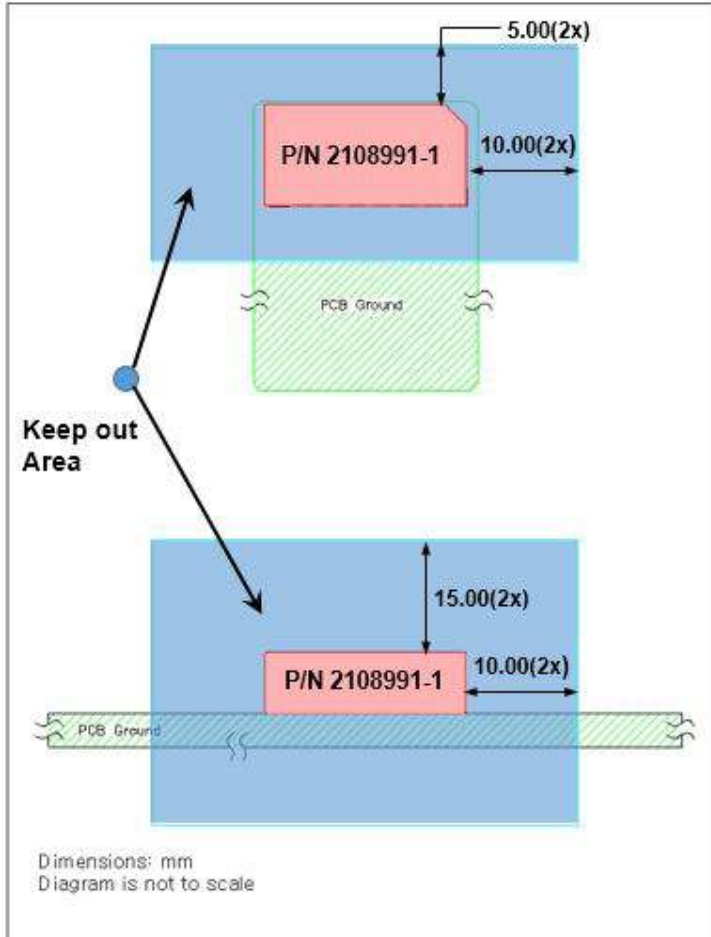
698–960 MHz Helical Antenna for IoT
 (includes frequencies of IoT solutions) (Continued)

PCB TEST Options

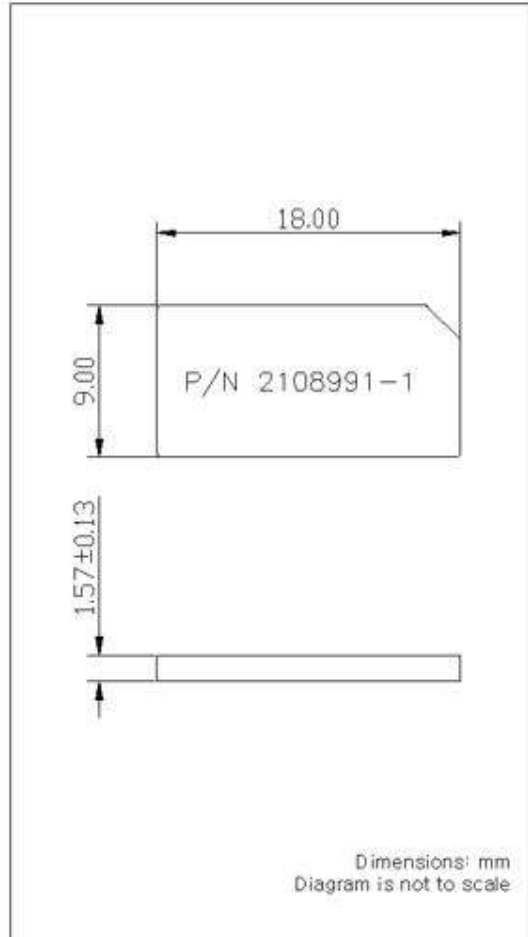


698–960 MHz Helical Antenna for IoT (includes frequencies of IoT solutions) (Continued)

Keep Out Area



Approx. Dimensions



- Note: In case keep out zone as recommended can't be guaranteed, contact TE for implementation service.