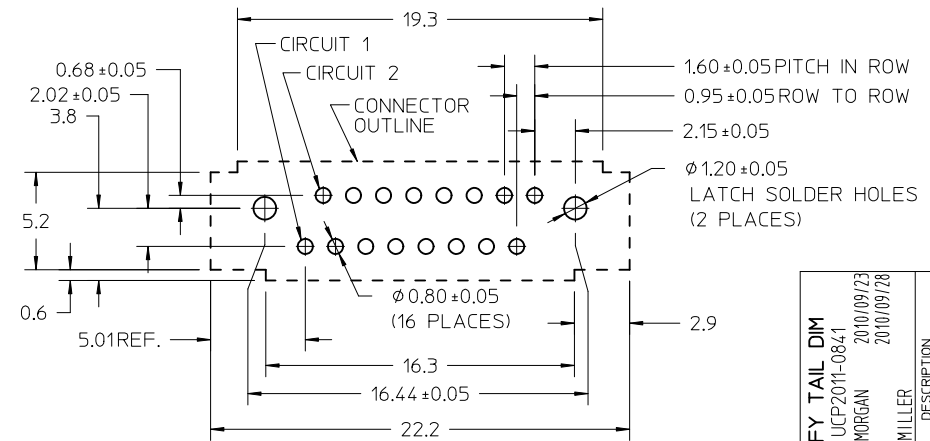


NOTES:

- MATERIALS:
HOUSING: POLYAMIDE, GLASS FILLED, UL94-0, COLOR: BLACK.
TERMINAL: COPPER ALLOY.
LATCHES: STAINLESS STEEL.
- FINISHES: TERMINAL SELECTIVE GOLD (Au), FLASH OVER PALLADIUM/NICKEL (Pd/Ni) THICKNESS 1.00 MICROMETERS MINIMUM IN CONTACT AREA; SELECTIVE TIN (Sn), THICKNESS 1.91 MICROMETERS MINIMUM IN SOLDER TAIL AREA; NICKEL (Ni) UNDERPLATE OVERALL.
- PRODUCT SPECIFICATION: PS-44828-001.
- PLEASE REFER TO MOLEX APPLICATION SPECIFICATION AS-44828-001 FOR RECOMMENDATIONS FOR BEST DESIGN PRACTICES FOR CRADLE DESIGNS AND MATING INFORMATION TO THE HANDYLINK RECEPTACLE SERIES 44828.
- PACKAGED IN TRAYS PK-45593-001.



CLARIFY TAIL DIM EC NO: UCP2011-0841 DRW:DMORGAN 2010/09/23 CHKD: 2010/09/28 APPR:SMILLER	QUALITY SYMBOLS	GENERAL TOLERANCES (UNLESS SPECIFIED)		DIMENSION STYLE MM ONLY		SCALE 5:1	DESIGN UNITS METRIC	THIRD ANGLE PROJECTION
	▽=0	mm	INCH	DRAWN BY	DATE	TITLE		
	▽=0	4 PLACES ± --- ± ---	DMORGAN	2010/02/01	0.8MM HANDYLINK PLUG PCB THRU-HOLE MEDIUM TAIL LENGTH ASSEMBLY			
	▽=0	3 PLACES ± --- ± ---	CHECKED BY	DATE	MOLEX INCORPORATED			
REV	DESCRIPTION	MATERIAL NO. 45593-5000		APPROVED BY SMILLER		DATE 2010/03/31	DOCUMENT NO. SD-45593-500	SHEET NO. 1 OF 1
A1		DRAFT WHERE APPLICABLE MUST REMAIN WITHIN DIMENSIONS		THIS DRAWING CONTAINS INFORMATION THAT IS PROPRIETARY TO MOLEX INCORPORATED AND SHOULD NOT BE USED WITHOUT WRITTEN PERMISSION				