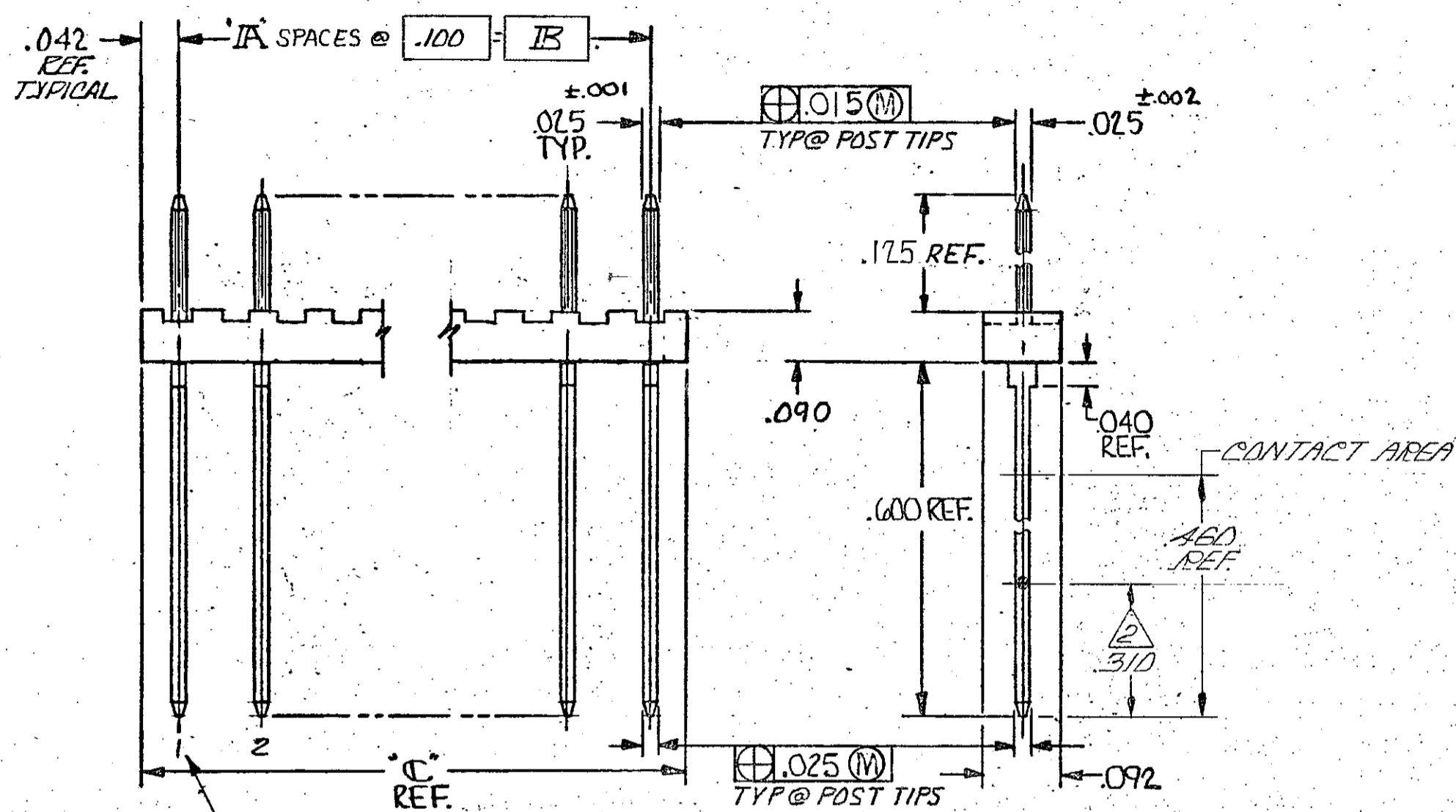
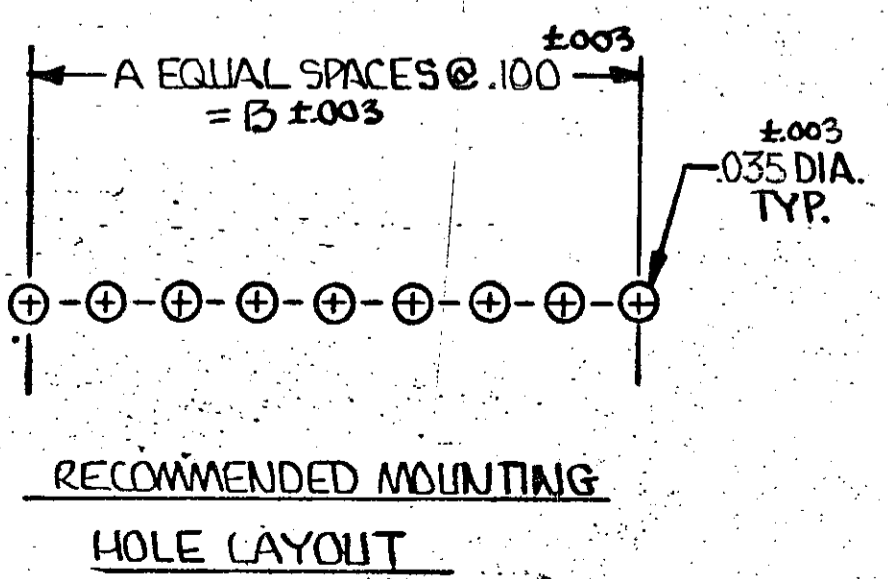


P. F.		ZONE	LTR	DESCRIPTION	DATE	APPROVED
		J		PLASTIC MATERIAL SUPPLIER CHANGED FOR HOUSING	05MAY2021	SB KJK



POST NOS (REF ONLY)

- 1. TRUE POSITION TOLERANCE OF POST TIPS APPLIES WHEN HEADERS ARE HELD FLAT AGAINST PRINTED CIRCUIT BOARD.
- 2. POINT OF MEASUREMENT FOR PLATING THICKNESS.
- 3. .00015 GOLD ON CONTACT AREA GOLD FLASH ON SOLDER AREA ALL OVER .00050 NICKEL.
- 4. OBSOLETE PART NUMBER
- 5. OBSOLETE PARTS: OBSOLETE CIS STREAMLINING PER D.RENAUD/D.SINISI



RECOMMENDED MOUNTING HOLE LAYOUT

1, 2, 3, 4	3.984	3.900	39	40	4-87465-2		
1	3.884	3.900	39	40	4-87465-1		
NONE	3.884	3.800	38	39	4-87465-0		
	3.784	3.700	37	38	3- A	-9	
	3.684	3.600	36	37	3- A	-8	
	3.584	3.500	35	36	3- A	-7	
	3.484	3.400	34	35	3- A	-6	
	3.384	3.300	33	34	3- A	-5	
	3.284	3.200	32	33	3- A	-4	
	3.184	3.100	31	32	3- A	-3	
	3.084	3.000	30	31	3- A	-2	
	2.984	2.900	29	30	3- A	-1	
	2.884	2.800	28	29	3- A	-0	
	2.784	2.700	27	28	2- A	-9	
	2.684	2.600	26	27	2- A	-8	
	2.584	2.500	25	26	2- A	-7	
	2.484	2.400	24	25	2- A	-6	
	2.384	2.300	23	24	2- A	-5	
	2.284	2.200	22	23	2- A	-4	
	2.184	2.100	21	22	2- A	-3	
	2.084	2.000	20	21	2- A	-2	
	1.984	1.900	19	20	2- A	-1	
	1.884	1.800	18	19	2- A	-0	
	1.784	1.700	17	18	1- A	-9	
	1.684	1.600	16	17	1- A	-8	
	1.584	1.500	15	16	1- A	-7	
	1.484	1.400	14	15	1- A	-6	
	1.384	1.300	13	14	1- A	-5	
	1.284	1.200	12	13	1- A	-4	
	1.184	1.100	11	12	1- A	-3	
	1.084	1.000	10	11	1- A	-2	
	.984	.900	9	10	1- A	-1	
	.884	.800	8	9	1- A	-0	
	.684	.600	6	7		-9	
	.584	.500	5	6		-8	
	.484	.400	4	5	4	-7	
	.384	.300	3	4		-6	
	.284	.200	2	3		-5	
	.184	.100	1	2	4	-4	
	.084			1	4	-3	
	3.984	3.900	39	40	87465-2		
	NONE	.784	.700	7	8	87465-1	
		C	IB	IA	NO. OF POS.	PART NO	

5 OBSOLETE

5 OBSOLETE

5 OBSOLETE

UNLESS OTHERWISE SPECIFIED DIMENSIONS ARE IN INCHES. TOLERANCES ON: DECIMALS ±.005 ANGLES ±	CONTRACT NO	TE Connectivity NAME HEADER ASSY, MOD II, .025 SQ. POSTS, SINGLE ROW, .100 CENTERS		
	DR: <i>BA Wolfe</i> 11-7-72 CHK: <i>Dill</i> 5-28-75			
MATERIAL HSG.: GLASS FILLED NYLON COLOR: BLACK	APPD: <i>Bennett</i> 5/30/75 APPD: <i>R. Clark</i> 5/30/75	SIZE	CODE IDENT NO	DRAWING NO
FINISH: POSTS: 5	OTHER APPD	C	00779	87465
		SCALE	SHEET	REV J