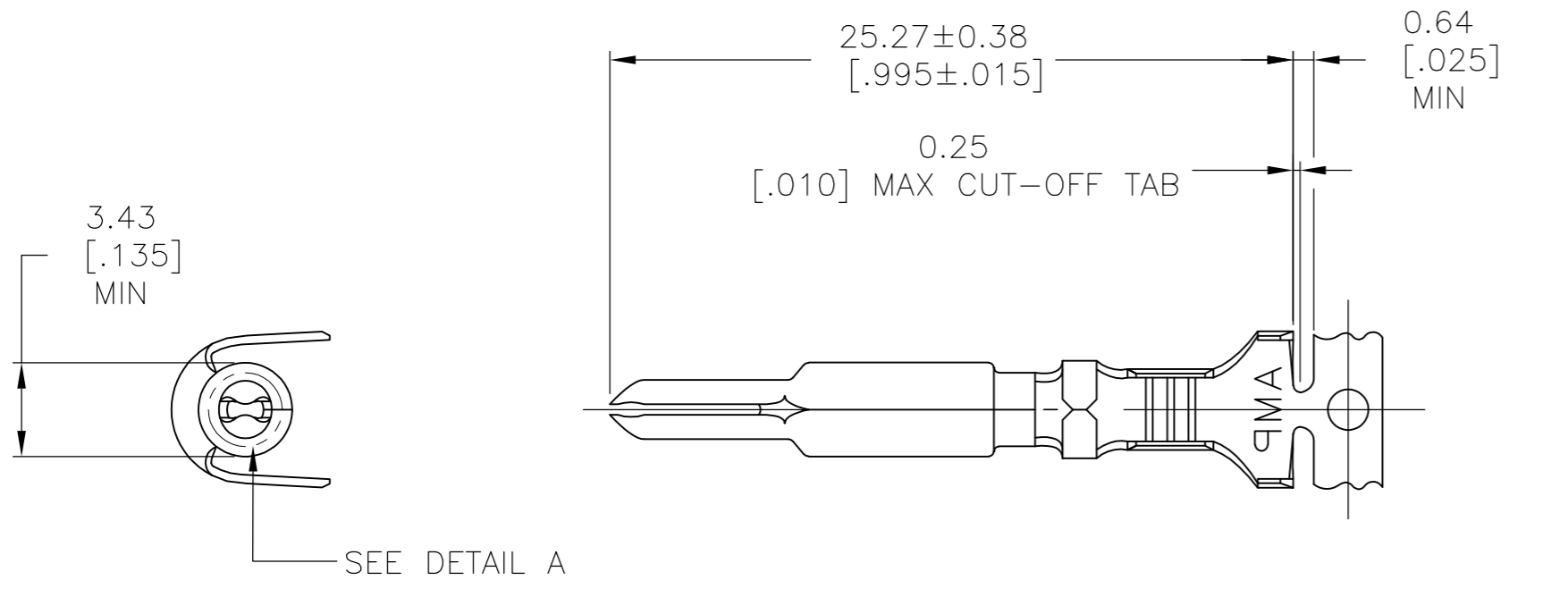
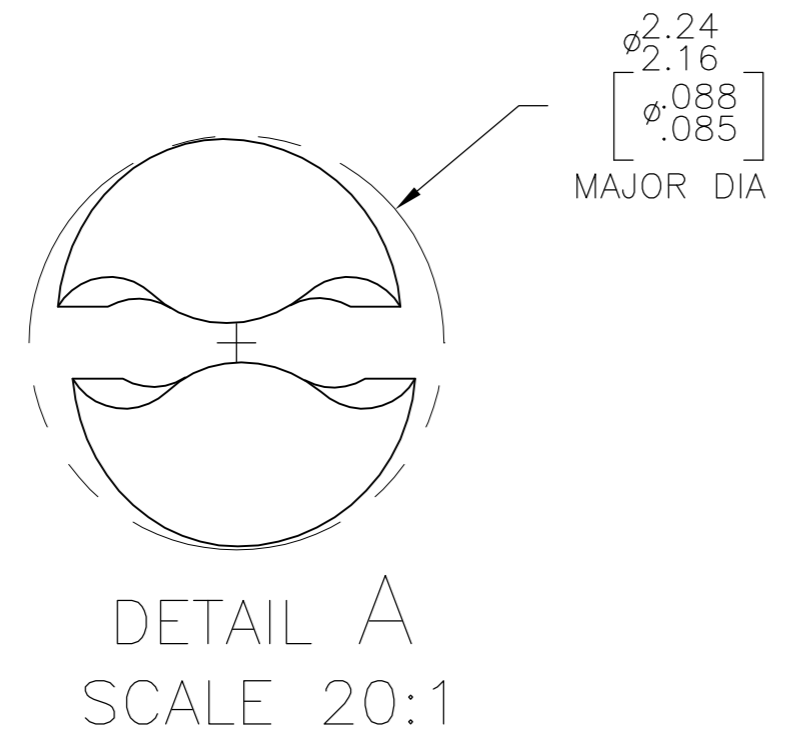
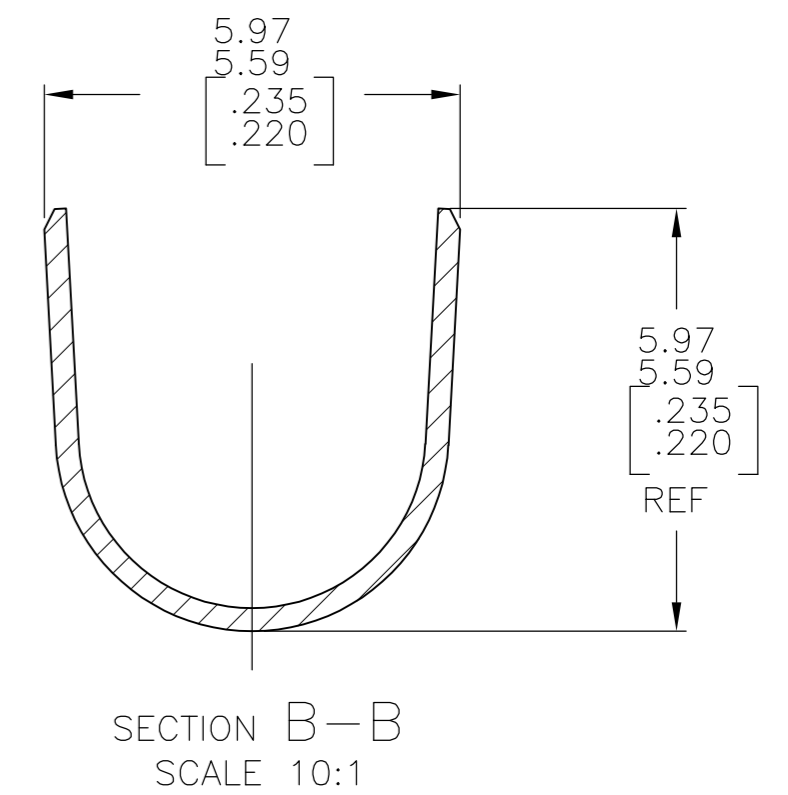
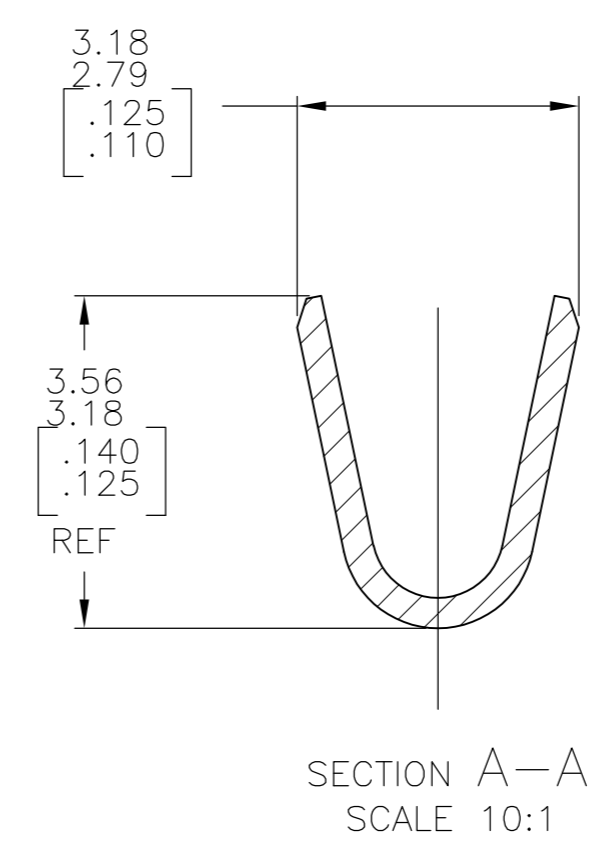
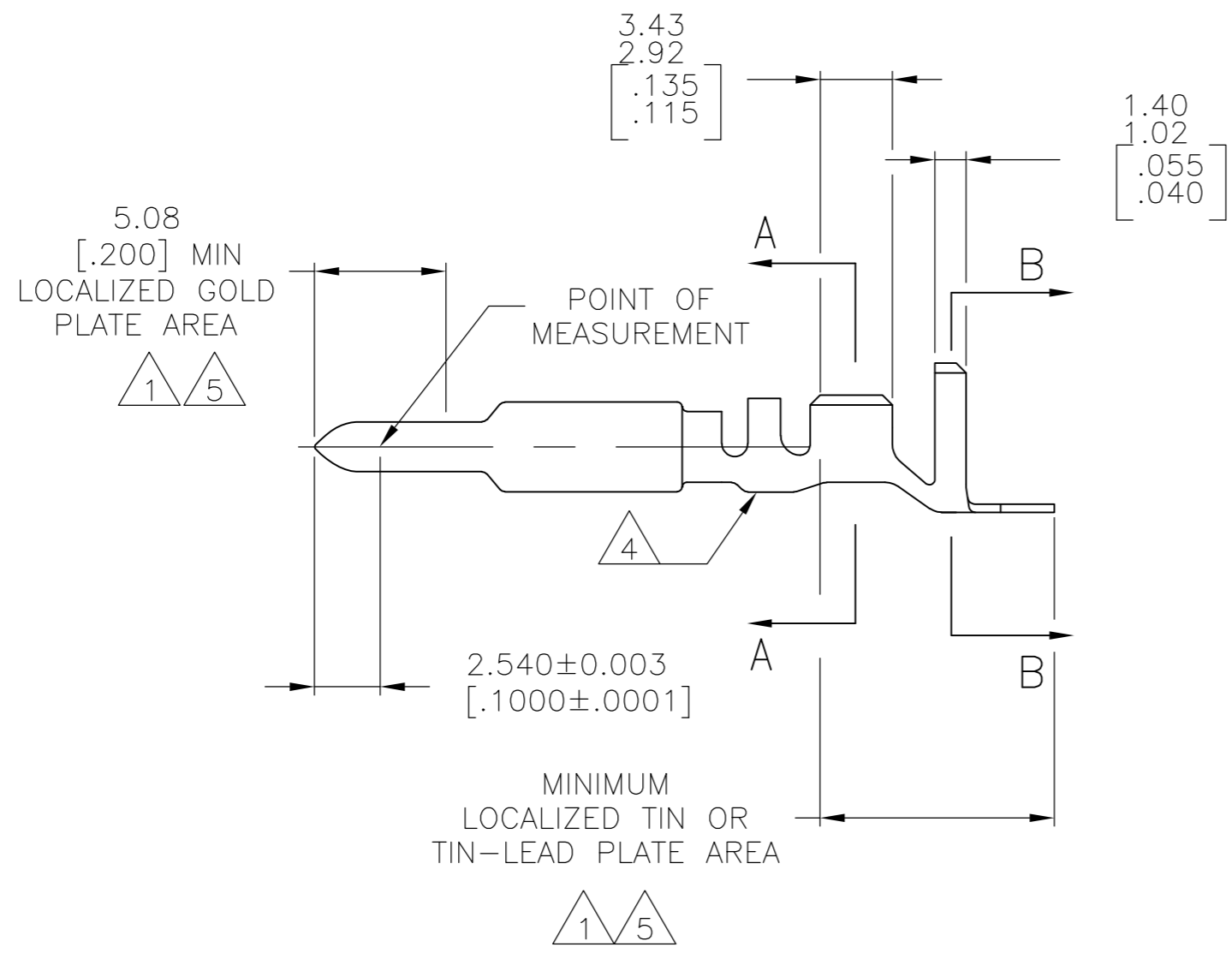


THIS DRAWING IS UNPUBLISHED. RELEASED FOR PUBLICATION
 © COPYRIGHT - By - ALL RIGHTS RESERVED.

| LOC | | DIST | | REVISIONS | | | |
|-----|-----|-------------|--|---------------------------|-----------|------|----|
| P | LTR | DESCRIPTION | | DATE | DWN | APVD | |
| CM | 00 | M | | REVISED PER ECR-13-008204 | 10DEC2013 | KH | TM |



SEE DETAIL A



- 1 0.00076[.000030] MIN GOLD AT POINT OF MEASUREMENT IN THE LOCALIZED GOLD PLATE AREA, 0.00127[.000050] MIN TIN-LEAD IN TIN-LEAD PLATE AREA, 0.00127[.000050] MIN NICKEL UNDERPLATE ON ENTIRE CONTACT.
- 2 WIRE RANGE: 0.5-2mm² [20-14 AWG] INSULATION RANGE: 3.30-5.08 [.130-.200] DIA.
- 3 DIMENSIONS IN BRACKETS ARE IN INCHES.
- 4 LETTER "P" STAMPED IN THIS LOCATION.
- 5 0.00076[.000030] MIN GOLD AT POINT OF MEASUREMENT IN THE LOCALIZED GOLD PLATE AREA, 0.00127[.000050] MIN TIN IN TIN PLATE AREA, 0.00127[.000050] MIN NICKEL UNDERPLATE ON ENTIRE CONTACT.
- 6 SUPERSEDED BY 1-770005-0
- 7 SUPERSEDED BY 1-770005-1

| FINISH | MATERIAL | PART NUMBER |
|------------|--------------------|---------------------|
| 4 GOLD 5 | 0.30 [.012] PH BRZ | 1-770005-1 |
| 4 GOLD 5 | 0.30 [.012] BRASS | 1-770005-0 |
| 7 4 GOLD 1 | 0.30 [.012] PH BRZ | 770005-4 |
| 4 PRE-TIN | 0.30 [.012] PH BRZ | 770005-3 |
| 6 GOLD 1 | 0.30 [.012] BRASS | 770005-2 |
| 4 PRE-TIN | 0.30 [.012] BRASS | 770005-1 |

THIS DRAWING IS A CONTROLLED DOCUMENT.

| | |
|--|---------------------------------------|
| DWN S. CARPENTER 20MAY03 | TE Connectivity |
| CHK C. JONES 20MAY03 | |
| APVD C. JONES 20MAY03 | |
| PRODUCT SPEC | |
| MATERIAL SEE TABLE | NAME PIN, UNIVERSAL MATE-N-LOK(TM) II |
| TOLERANCES UNLESS OTHERWISE SPECIFIED: | SIZE A2 |
| 0 PLC ± - | CAGE CODE 00779 |
| 1 PLC ± - | DRAWING NO C=770005 |
| 2 PLC ± - | RESTRICTED TO - |
| 3 PLC ± - | SCALE 4:1 |
| 4 PLC ± - | SHEET 1 OF 1 |
| ANGLES ± - | REV M |
| FINISH SEE TABLE | CUSTOMER DRAWING |