

ITEM	DESCRIPTION
1	SCREW
2	EXTERNAL THREAD COVER
3	INSERT
4	GASKET
5	GROMMET
6	EXTERNAL THREAD NUT

C25200NOT***

SERIES _____
 C25= EXTERNAL THREAD FORM C
 POLES _____
 2= 2 POLE & 3= 3 POLE
 THREAD _____
 00 = EXTERNAL THREAD
 MATERIAL AND HOUSING COLOR _____
 G= PA6 GRAY, N= PA6 BLACK, W= PA6 BLACK V0, T= TRANSPARENT
 GROUND POSITION _____
 0= UNMOUNTED, 2= H12, 3=H3, 6 =H6 & 9= H9
 SCREW AND GASKET _____
 U= PROFILE SILICON GASKET AND IP67 SCREW
 T= PROFILE NBR GASKET AND IP67 SCREW
 NON STANDARD PACKAGING _____
 CN= BULK PACK UN-MOUNTED
 SN= BULK PACK MOUNTED
 67= NEUTRAL PACKAGING
 ADDITIONAL CODES _____
 SA = UL AGENCY APPROVAL

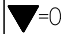
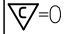

NOTES:

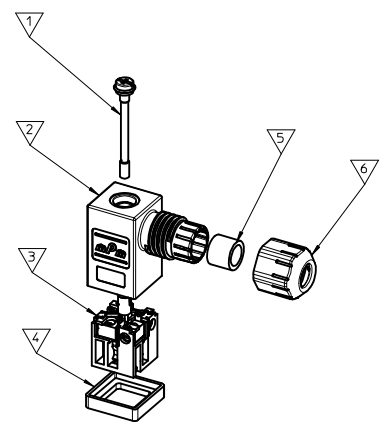
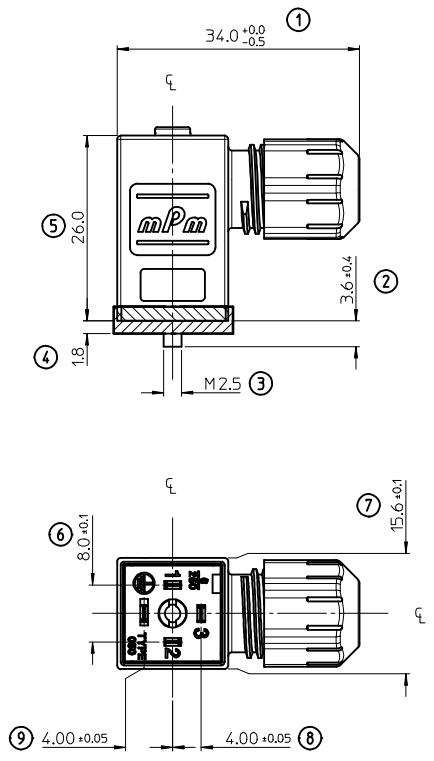
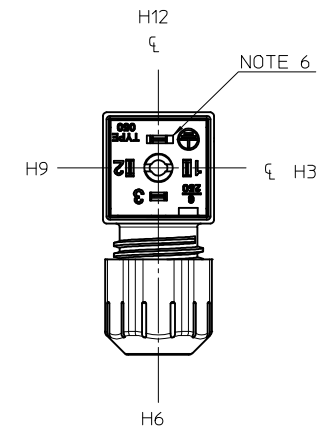
- FOR SPECIFIC PART NUMBERS PLEASE CONTACT SALES OR CONSULT THE INTELLIGENT PART NUMBERS IN THE TABLE ATTACHED
- PACKAGING SPECIFICATION: PLEASE SEE PK-121204-001
- PRODUCT SPECIFICATION: PLEASE SEE PS-121201-001
- CABLE SIZES 3 - 5.5 MM DIAMETER
- TIGHTENING TORQUES: SEE PS-121201-001
- GROUND POSITION SHOWN H12

LAST INSPECTION NUMBER 9

CHANGED SCREW EC NO: IPG2012-0379 2012/05/15 DRWN:DSHEA CHKD:SMCGREYVY 2012/06/12 APPR:EFOLAN 2012/07/20	DESCRIPTION REV	QUALITY SYMBOLS ▽=0 ▽=0		GENERAL TOLERANCES (UNLESS SPECIFIED) mm INCH 4 PLACES ± --- ± --- 3 PLACES ± --- ± --- 2 PLACES ± 0.1 ± --- 1 PLACE ± 0.2 ± --- ANGULAR ± ---°		DIMENSION STYLE MM ONLY		SCALE 2:1	DESIGN UNITS METRIC	THIRD ANGLE PROJECTION	
		DRAWN BY DMAHER_WEU		DATE 2010/03/12		TITLE EXTERNAL THREAD C25 SERIES 121204					
		CHECKED BY E FOLAN		APPROVED BY JWALLACE		DATE 2010/03/24		MATERIAL NO.		DOCUMENT NO. SD-121204-001	
		DRAFT WHERE APPLICABLE MUST REMAIN WITHIN DIMENSIONS		SEE TABLE		SIZE A2		THIS DRAWING CONTAINS INFORMATION THAT IS PROPRIETARY TO MOLEX INCORPORATED AND SHOULD NOT BE USED WITHOUT WRITTEN PERMISSION			

Part No	MPM Part No	DESCRIPTION
1212040001	C25200N0T	FORM C 2 POLE BLACK NBR GASKET
1212040002	C25200G0T	FORM C 2 POLE GREY NBR GASKET
1212040003	C25200W0TSA	FORM C 2 POLE BLACK UL V0 NBR GASKET
1212040004	C25200T0T	FORM C 2 POLE TRANSPARENT NBR GASKET
1212040005	C25300N0T	FORM C 3 POLE BLACK NBR GASKET
1212040006	C25300G0T	FORM C 3 POLE GREY NBR GASKET
1212040007	C25300W0TSA	FORM C 3 POLE BLACK UL V0 NBR GASKET
1212040008	C25300T0T	FORM C 3 POLE TRANSPARENT NBR GASKET
1212040009	C25200N0TCN	FORM C 2 POLE EXT ASY BLK PA6 BULK
1212040010	C25200N2TSN	FORM C 2 POLE EXT ASY BLK PA6 BULK MOUNTED
1212040011	C25300N2TSN	FORM C 3 POLE EXT ASY BLK PA6 BULK MOUNTED
1212040012	C25200W0USA	FORM C 2 POLE BLACK UL V0 SILICONE GASKET
1212040013	C25300W0USA	FORM C 3 POLE BLACK UL V0 SILICONE GASKET
1212040014	C25200W0TCNSA	FORM C 2 POLE EXT ASY BLK UL V0 PA6 NBR BULK
1212040015	C25200W0UCNSA	FORM C 2 POLE EXT ASY BLK UL V0 PA6 SILICONE BULK
1212040016	C25300W0TCNSA	FORM C 3 POLE EXT ASY BLK UL V0 PA6 NBR BULK
1212040017	C25300W0UCNSA	FORM C 3 POLE EXT ASY BLK UL V0 PA6 SILICONE BULK
1212040018	C25200W2TSNSA	FORM C 2 POLE EXT ASY BLK UL V0 PA6 NBR BULK MOUNTED

SEE SHEET 1 EC NO: IPG2012-0379 DRWNG: SHEA 2012/05/15 CHKD: SMC GREVY 2012/06/22 APPR: E FOLAN 2012/07/20	DESCRIPTION REV	QUALITY SYMBOLS  =0  =0	GENERAL TOLERANCES (UNLESS SPECIFIED) <table border="1"> <thead> <tr> <th></th> <th>mm</th> <th>INCH</th> </tr> </thead> <tbody> <tr> <td>4 PLACES</td> <td>± ---</td> <td>± ---</td> </tr> <tr> <td>3 PLACES</td> <td>± ---</td> <td>± ---</td> </tr> <tr> <td>2 PLACES</td> <td>± 0.1</td> <td>± ---</td> </tr> <tr> <td>1 PLACE</td> <td>± 0.2</td> <td>± ---</td> </tr> <tr> <td>0 PLACE</td> <td>± ---</td> <td>± ---</td> </tr> </tbody> </table>		mm	INCH	4 PLACES	± ---	± ---	3 PLACES	± ---	± ---	2 PLACES	± 0.1	± ---	1 PLACE	± 0.2	± ---	0 PLACE	± ---	± ---	DIMENSION STYLE MM ONLY DRAWN BY: DMAHER_WEU DATE: 2010/03/12 CHECKED BY: E FOLAN DATE: APPROVED BY: JWALLACE DATE: 2010/03/24	SCALE: 1:1 DESIGN UNITS: METRIC THIRD ANGLE PROJECTION	TITLE: EXTERNAL THREAD C25 SERIES 121204 	MATERIAL NO. SEE TABLE	DOCUMENT NO. SD-121204-001 SHEET NO. 2 OF 2
			mm	INCH																						
		4 PLACES	± ---	± ---																						
		3 PLACES	± ---	± ---																						
2 PLACES	± 0.1	± ---																								
1 PLACE	± 0.2	± ---																								
0 PLACE	± ---	± ---																								
DRAFT WHERE APPLICABLE MUST REMAIN WITHIN DIMENSIONS		SIZE: A2	THIS DRAWING CONTAINS INFORMATION THAT IS PROPRIETARY TO MOLEX INCORPORATED AND SHOULD NOT BE USED WITHOUT WRITTEN PERMISSION																							



ITEM	DESCRIPTION
1	SCREW
2	EXTERNAL THREAD COVER
3	INSERT
4	GASKET
5	GROMMET
6	EXTERNAL THREAD NUT

C25200NOT***

SERIES _____
 C25= EXTERNAL THREAD FORM C
 POLES _____
 2= 2 POLE & 3= 3 POLE
 THREAD _____
 00 = EXTERNAL THREAD
 MATERIAL AND HOUSING COLOR _____
 G= PA6 GRAY, N= PA6 BLACK, W= PA6 BLACK V0, T= TRANSPARENT
 GROUND POSITION _____
 0= UNMOUNTED, 2= H12, 3=H3, 6 =H6 & 9= H9
 SCREW AND GASKET _____
 U= PROFILE SILICON GASKET AND IP67 SCREW
 T= PROFILE NBR GASKET AND IP67 SCREW
 NON STANDARD PACKAGING _____
 CN= BULK PACK UN-MOUNTED
 SN= BULK PACK MOUNTED
 67= NEUTRAL PACKAGING
 ADDITIONAL CODES _____
 SA = UL AGENCY APPROVAL

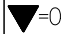
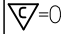
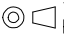
NOTES:

- FOR SPECIFIC PART NUMBERS PLEASE CONTACT SALES OR CONSULT THE INTELLIGENT PART NUMBERS IN THE TABLE ATTACHED
- PACKAGING SPECIFICATION: PLEASE SEE PK-121204-001
- PRODUCT SPECIFICATION: PLEASE SEE PS-121201-001
- CABLE SIZES 3 - 5.5 MM DIAMETER
- TIGHTENING TORQUES: SEE PS-121201-001
- GROUND POSITION SHOWN H12

LAST INSPECTION NUMBER 9

CHANGED SCREW EC NO: IPG2012-0379 2012/05/15 DRWN:DSHEA CHKD:SMCGREYVY 2012/06/12 APPR:EFOLAN 2012/07/20	QUALITY SYMBOLS	GENERAL TOLERANCES (UNLESS SPECIFIED)	DIMENSION STYLE	SCALE	DESIGN UNITS	THIRD ANGLE PROJECTION	
	▽=0	4 PLACES ±---	MM ONLY	2:1	METRIC	□	
	▽=0	3 PLACES ±---	mm INCH	DRAWN BY	DATE	TITLE	EXTERNAL THREAD C25 SERIES 121204
		2 PLACES ±0.1		DMAHER_WEU	2010/03/12		
	1 PLACE ±0.2	ANGULAR ±---	CHECKED BY	DATE			
			E FOLAN				
		DRAFT WHERE APPLICABLE MUST REMAIN WITHIN DIMENSIONS	APPROVED BY	DATE			
			JWALLACE	2010/03/24			
			MATERIAL NO.	DOCUMENT NO.			
			SEE TABLE	SD-121204-001			
			SIZE A2	THIS DRAWING CONTAINS INFORMATION THAT IS PROPRIETARY TO MOLEX INCORPORATED AND SHOULD NOT BE USED WITHOUT WRITTEN PERMISSION			

Part No	MPM Part No	DESCRIPTION
1212040001	C25200N0T	FORM C 2 POLE BLACK NBR GASKET
1212040002	C25200G0T	FORM C 2 POLE GREY NBR GASKET
1212040003	C25200W0TSA	FORM C 2 POLE BLACK UL V0 NBR GASKET
1212040004	C25200T0T	FORM C 2 POLE TRANSPARENT NBR GASKET
1212040005	C25300N0T	FORM C 3 POLE BLACK NBR GASKET
1212040006	C25300G0T	FORM C 3 POLE GREY NBR GASKET
1212040007	C25300W0TSA	FORM C 3 POLE BLACK UL V0 NBR GASKET
1212040008	C25300T0T	FORM C 3 POLE TRANSPARENT NBR GASKET
1212040009	C25200N0TCN	FORM C 2 POLE EXT ASY BLK PA6 BULK
1212040010	C25200N2TSN	FORM C 2 POLE EXT ASY BLK PA6 BULK MOUNTED
1212040011	C25300N2TSN	FORM C 3 POLE EXT ASY BLK PA6 BULK MOUNTED
1212040012	C25200W0USA	FORM C 2 POLE BLACK UL V0 SILICONE GASKET
1212040013	C25300W0USA	FORM C 3 POLE BLACK UL V0 SILICONE GASKET
1212040014	C25200W0TCNSA	FORM C 2 POLE EXT ASY BLK UL V0 PA6 NBR BULK
1212040015	C25200W0UCNSA	FORM C 2 POLE EXT ASY BLK UL V0 PA6 SILICONE BULK
1212040016	C25300W0TCNSA	FORM C 3 POLE EXT ASY BLK UL V0 PA6 NBR BULK
1212040017	C25300W0UCNSA	FORM C 3 POLE EXT ASY BLK UL V0 PA6 SILICONE BULK
1212040018	C25200W2TSNSA	FORM C 2 POLE EXT ASY BLK UL V0 PA6 NBR BULK MOUNTED

SEE SHEET 1 EC NO: IPG2012-0379 DRWNG: SHEA 2012/05/15 CHKD: SMC GREVY 2012/06/22 APPR: E FOLAN 2012/07/20	DESCRIPTION REV	QUALITY SYMBOLS  = 0  = 0.1	GENERAL TOLERANCES (UNLESS SPECIFIED) <table border="1"> <thead> <tr> <th></th> <th>mm</th> <th>INCH</th> </tr> </thead> <tbody> <tr> <td>4 PLACES</td> <td>± ---</td> <td>± ---</td> </tr> <tr> <td>3 PLACES</td> <td>± ---</td> <td>± ---</td> </tr> <tr> <td>2 PLACES</td> <td>± 0.1</td> <td>± ---</td> </tr> <tr> <td>1 PLACE</td> <td>± 0.2</td> <td>± ---</td> </tr> <tr> <td>0 PLACE</td> <td>± ---</td> <td>± ---</td> </tr> </tbody> </table>		mm	INCH	4 PLACES	± ---	± ---	3 PLACES	± ---	± ---	2 PLACES	± 0.1	± ---	1 PLACE	± 0.2	± ---	0 PLACE	± ---	± ---	DIMENSION STYLE MM ONLY	SCALE 1:1	DESIGN UNITS METRIC	 THIRD ANGLE PROJECTION
			mm	INCH																					
		4 PLACES	± ---	± ---																					
		3 PLACES	± ---	± ---																					
2 PLACES	± 0.1	± ---																							
1 PLACE	± 0.2	± ---																							
0 PLACE	± ---	± ---																							
		DRAWN BY DMAHER_WEU	DATE 2010/03/12	TITLE EXTERNAL THREAD C25 SERIES 121204																					
		CHECKED BY E FOLAN	DATE	APPROVED BY JWALLACE																					
		MATERIAL NO.		DATE 2010/03/24	DOCUMENT NO. SD-121204-001		SHEET NO. 2 OF 2																		