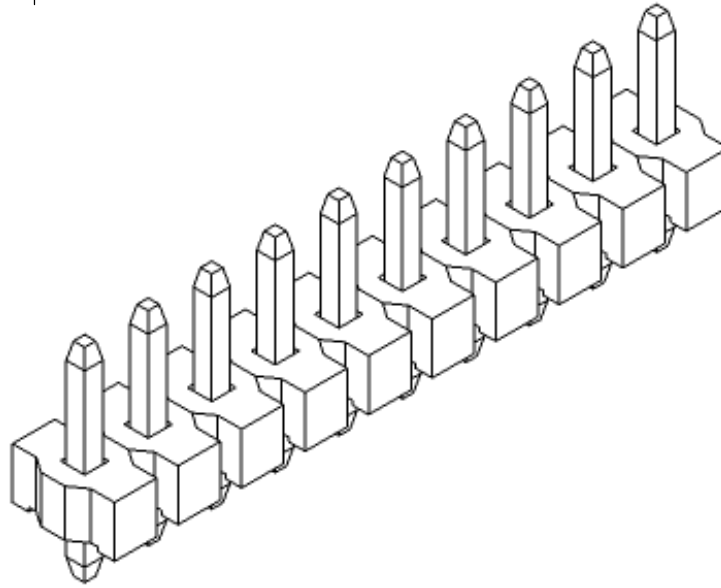
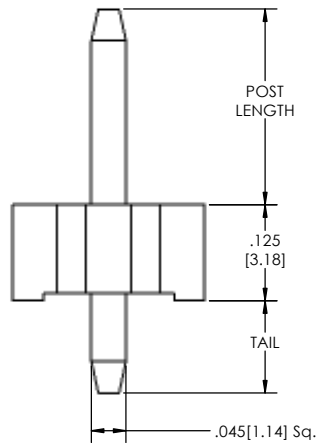
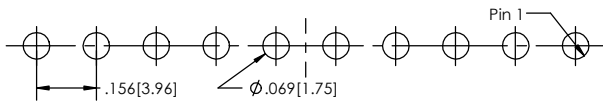
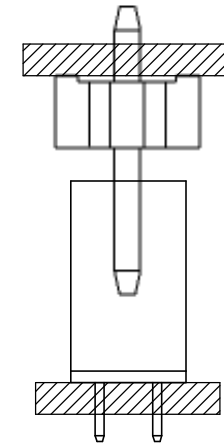


**RECOMMENDED PC BOARD LAYOUT**

SCALE 4:1



**APPLICATION**



PC156H - **XX** - **S** - **XX** - **T** - **LF**  
**(A) (B) (C) (D) (E)**

- A. Pins Per Row  
- 1 through 24
- B. Row Specification  
- S= Single Row
- C. Pin Options  
- See Pin Options below
- D. Plating Options  
- See Plating Options below
- E. Lead Free

Mates with:  
 PC156-XX-S-02  
 PC156-XX-S-04

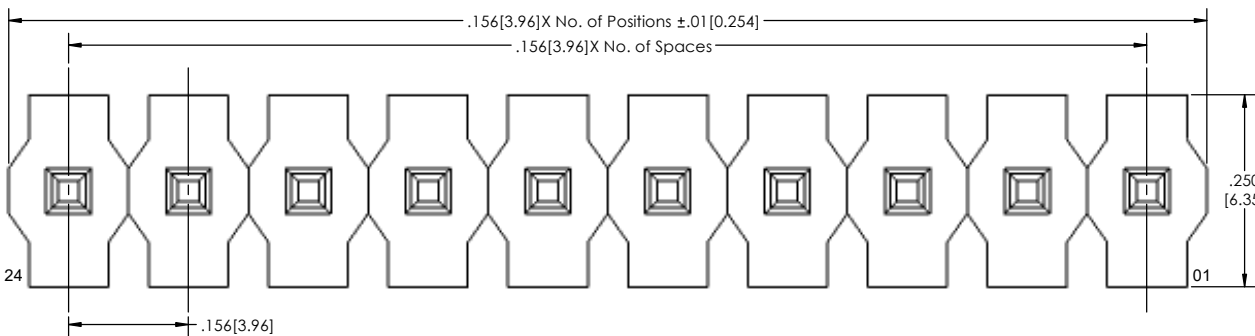
Plating options
T]-Matte Tin all Over

Specifications:  
 Current Rating: 7.9 Ampere  
 Insulation Resistance: 5000M Ohms Min.  
 Dielectric Withstanding: 1500V AC/DC  
 Contact Resistance: 20M Ohms Max.  
 Operation Temperature: -55°C to +105°C  
 Max. Process Temperature  
 IR Reflow: 280°C up to 10 secs.  
 Wave: 250°C up to 10 secs.  
 Manual Solder: 380°C up to 5 secs.

Pin Options		
Post Length	Tail Length	
.150 [3.81mm]	.475 [12.07mm]	01
.450 [11.43mm]	.175 [4.45mm]	02
.500 [12.70mm]	.175 [4.45mm]	04
.809 [20.55mm]	.156 [3.96mm]	14

Materials:  
 Contact Material: Phosphor Bronze  
 Insulator Material: LCP, UL94V-0  
 Plating: Matte Tin over 50" [1.27] Ni

Tails may be clipped to achieve specific dimensions.  
 Products cut to specific sizes are uncancelable/ nonreturnable.  
 Parts are subject to change without notice.



**PROPRIETARY AND CONFIDENTIAL**  
 THE INFORMATION CONTAINED IN THIS DRAWING IS THE SOLE PROPERTY OF Major League Electronics. ANY REPRODUCTION IN PART OR AS A WHOLE WITHOUT THE WRITTEN PERMISSION OF Major League Electronics IS PROHIBITED.

UNLESS OTHERWISE SPECIFIED:		NAME	DATE
DIMENSIONS ARE IN INCHES		DRAWN	EOW 10/11/16
TOLERANCES:		CHECKED	GWE 10/11/16
ONE DECIMALS ±.100		ENG APPR.	
TWO DECIMAL ±.010		MFG APPR.	
THREE DECIMAL ±.005		ADDRESS:	
FOUR DECIMAL ±.002		2533 Centennial Blvd.	
INTERPRET GEOMETRIC TOLERANCING PER:	MATERIAL:	Jeffersonville, In 47130	
NEXT ASSY	USED ON	Phone: 812-670-4174	
		Fax: 812-670-4175	
APPLICATION	DO NOT SCALE DRAWING	E-Mail: mle@mlelectronics.com	

**TITLE: PC156H SERIES**

SIZE	DWG. NO.	REV
<b>C</b>		<b>B</b>

SCALE 8:1 SHEET 1 OF 1