

KLG-1010-POLY "Simple" Transfer Product Datasheet



KLG-1010-POLY is a single 10mmx10mm monolayer of CVD graphene film on polymer film. The graphene was grown on copper, and is now ready to be transferred to a substrate of your choice. Simple to use instructions are included and no hazardous chemicals are required.

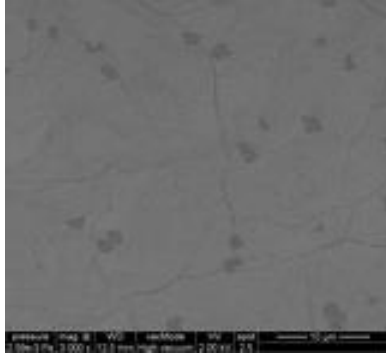
Graphene Film

Growth Method	CVD synthesis
Transfer Method	Clean transfer method
Quality Control	Raman and Optical Microscopy
Appearance (Color)	Transparent
Transparency	>97%
Appearance (Form)	Film
Coverage	>95%
Number of graphene layers	1
Theoretical thickness	0.345 nm
Sheet Resistance Quartz (Van der Pauw)	370±50 Ohms/sq. (1cm x 1cm)
Grain size	Up to 10 µm

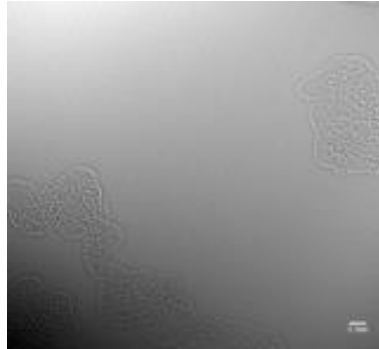
Substrates

PET (Polyethylene terephthalate polymer)

SEM image



HRTEM image



Raman Spectrum

