



## Analog Gas Sensor(MQ5) (SKU:SEN0130)

From Robot Wiki



### Contents

- 1 Introduction
  - 1.1 Specification
- 2 Pin Definition
- 3 Connection Diagram
- 4 Sample Code

### Introduction

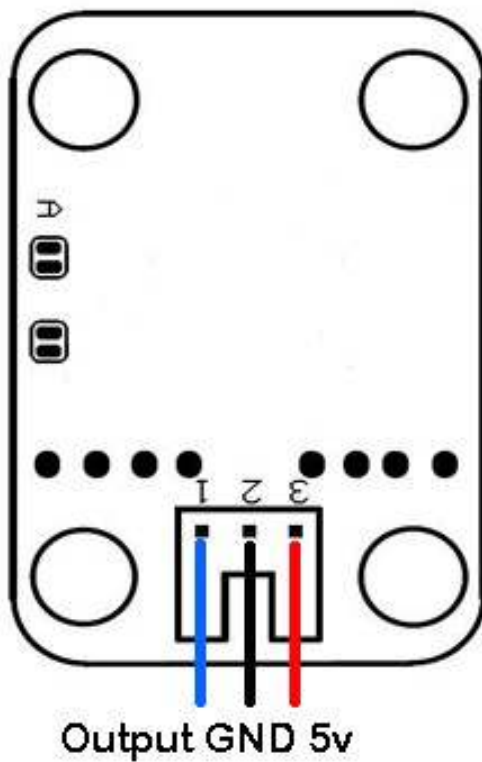
The MQ5 is used in gas leakage detecting equipment in consumer and industry applications, this sensor is suitable for detecting LPG, natural gas, coal gas. Avoid the noise of alcohol, cooking fumes and cigarette smoke. The sensitivity can be adjusted by the potentiometer.

## Specification

- Power supply needs: 5V
- Interface type: Analog
- Pin Definition: 1-Output 2-GND 3-VCC
- High sensitivity to LPG, natural gas, town gas
- Small sensitivity to alcohol, smoke
- Fast response
- Stable and long life
- Simple drive circuit
- Size: 40x20mm

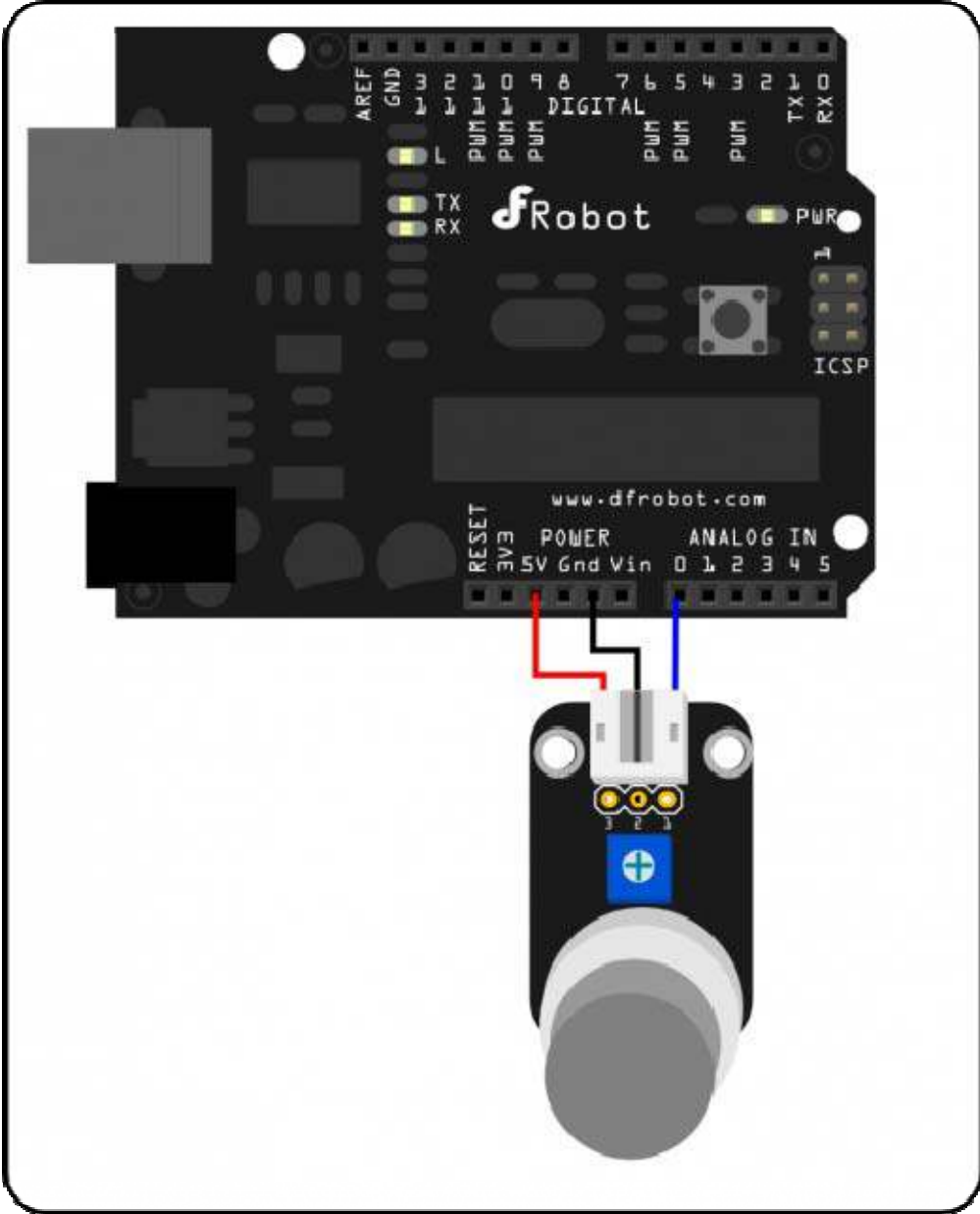
## Pin Definition

1. Signal Output
2. GND
3. Power



Analog Sensor Pin Definition

Connection Diagram



Analog sensor connection diagram

## Sample Code

```
///  
//Arduino Sample Code  
void setup()  
{  
  Serial.begin(9600); //Set serial baud rate to 9600 bps  
}  
void loop()  
{  
  int val;  
  val=analogRead(0);Read Gas value from analog 0  
  Serial.println(val,DEC);//Print the value to serial port  
  delay(100);  
}
```