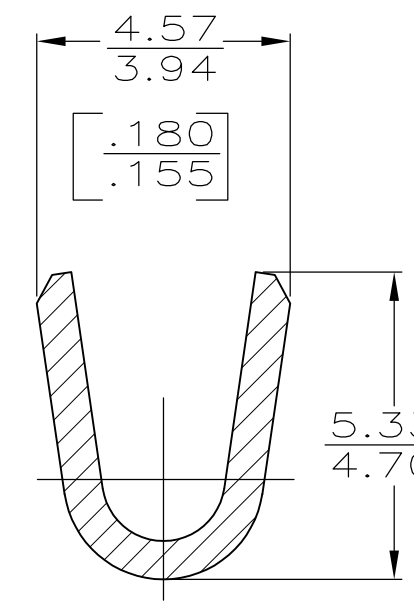
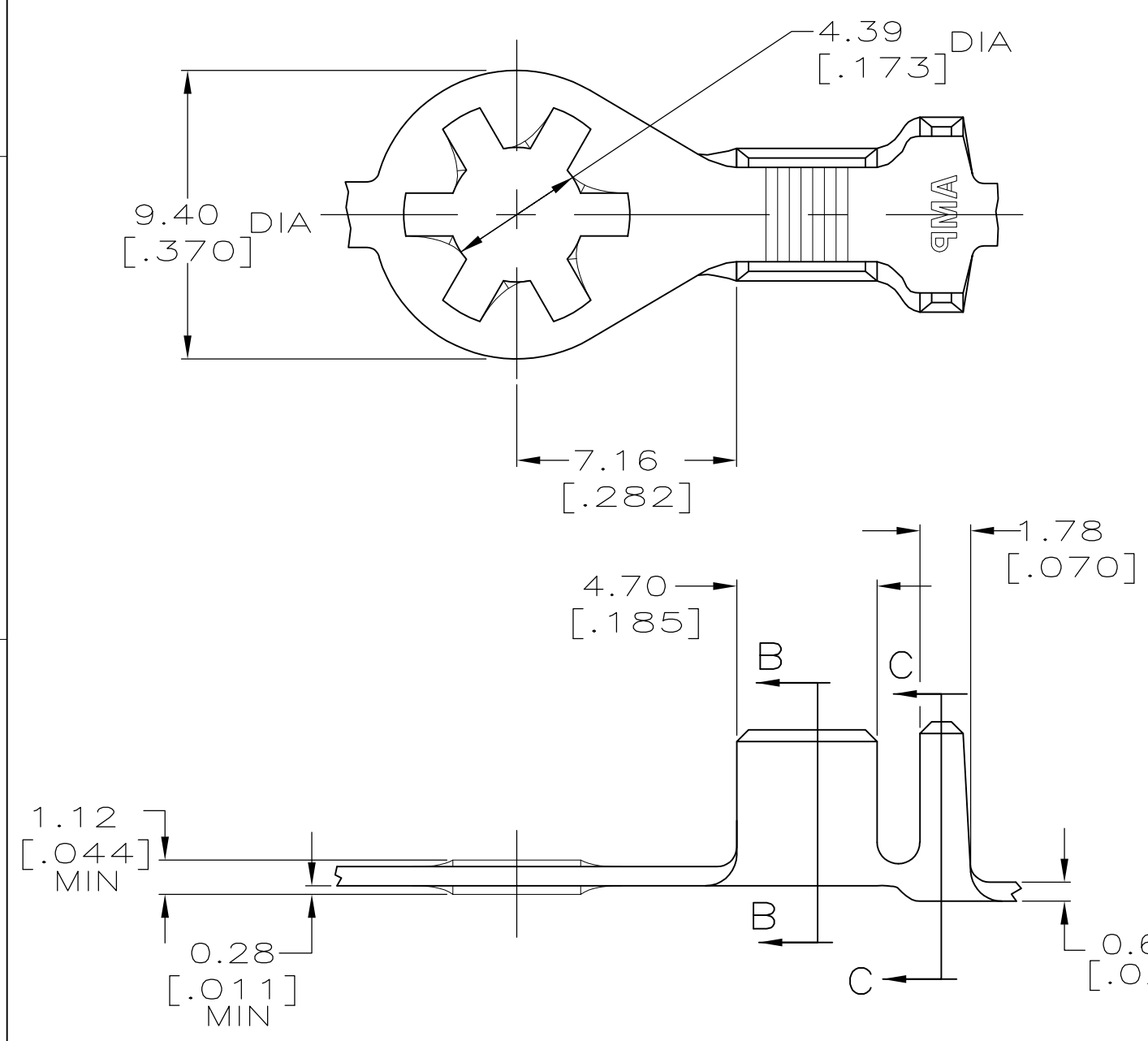


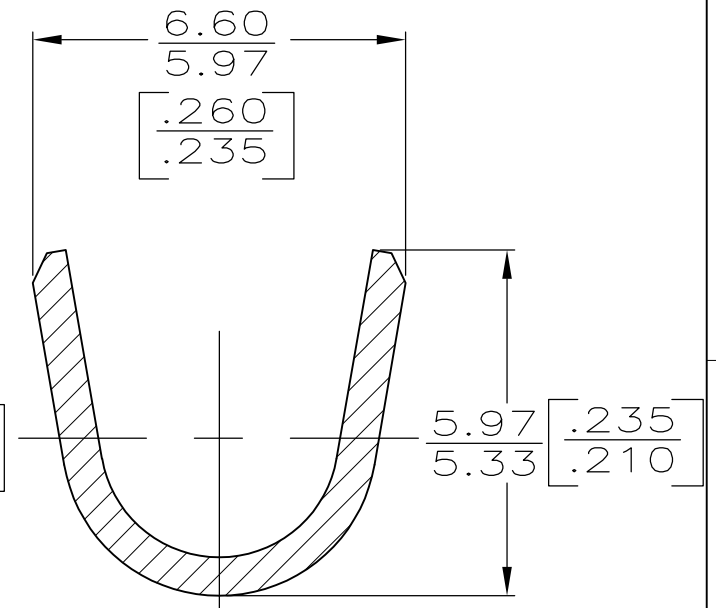
THIS DRAWING IS UNPUBLISHED. RELEASED FOR PUBLICATION  
 © COPYRIGHT BY TYCO ELECTRONICS CORPORATION. ALL INTERNATIONAL RIGHTS RESERVED.

LOC	DIST	REVISIONS					
AF	50	P	LTR	DESCRIPTION	DATE	DWN	APVD
		D		REVISED PER ECR-10-006099	09JUL10	HMR	PD

1. CONTINUOUS STRIP ON REEL.



SECTION B-B  
SCALE 8:1



SECTION C-C  
SCALE 8:1

F OR O	5.59 [.220]	6.35 [.250]	F	3.56 [.140]	2.36 [.093] (2) 1.3MM [16]	3.0MM [12]
					2.49 [.098]	2.0MM [14]
					2.24 [.088]	1.3MM [16]
					2.06 [.081]	
TYPE	WIDTH	STRIP LENGTH ±0.38 [±.015]	TYPE	WIDTH	±0.051 [.002] HEIGHT	WIRE
INSUL BARREL CRIMP			WIRE BARREL CRIMP			

3.30-4.32 DIA [.130-.170]	1.3-3.0mm <sup>2</sup> [16-12] AWG	63698-1
INSULATION RANGE	WIRE RANGE	PATR NO

THIS DRAWING IS A CONTROLLED DOCUMENT.

DIMENSIONS: mm [INCHES]	TOLERANCES UNLESS OTHERWISE SPECIFIED:	DWN PHIL FORTNEY 7/14/93	Tyco Electronics Corporation Harrisburg, PA 17105-3608
	0 PLC ± -	CHK JR RUTH 7/14/93	
	1 PLC ± -	APVD G YETTER 7/14/93	
	2 PLC ± 0.25 [.010]	NAME	
	3 PLC ± -	PRODUCT SPEC	RING
	4 PLC ± -	APPLICATION SPEC	
	ANGLES ± -	WEIGHT	SIZE CAGE CODE DRAWING NO RESTRICTED TO
MATERIAL H04 BRASS	FINISH TIN	CUSTOMER DRAWING	A3 00779 C-63698
		SCALE 5:1	SHEET 1 OF 1 REV D