

6

5

4

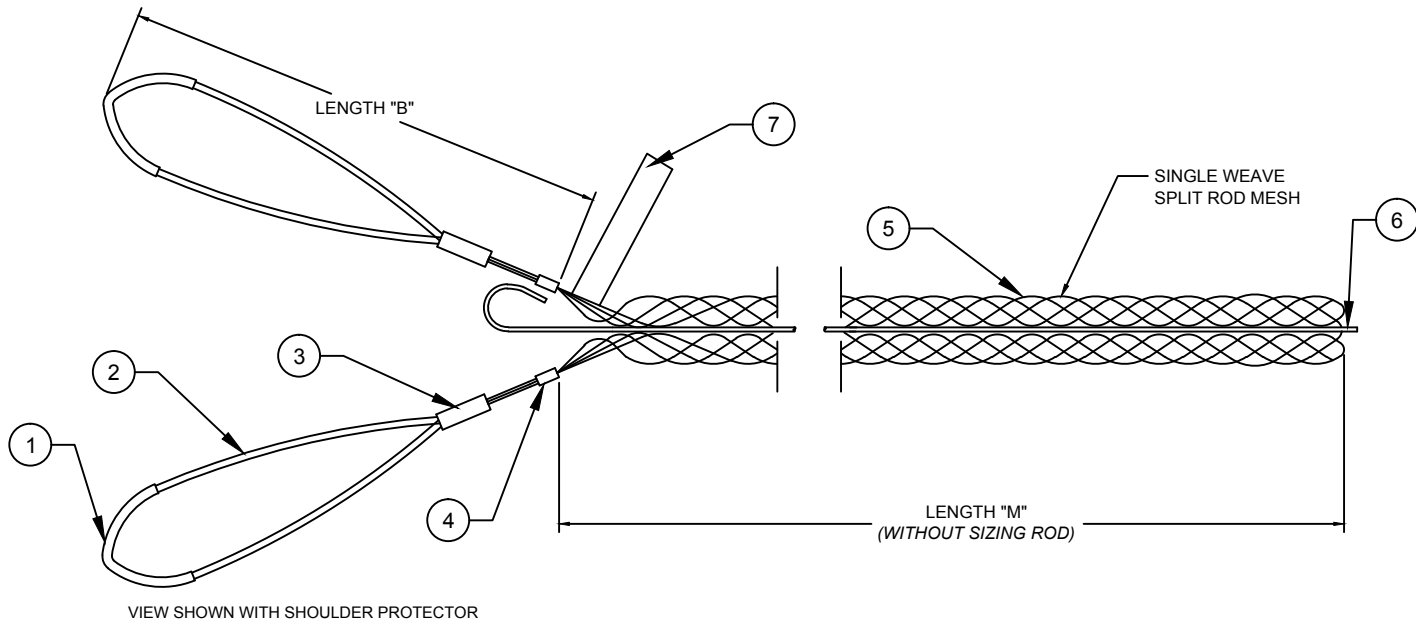
3

2

1

CATALOG NUMBER	MATERIAL NUMBER	CABLE RANGE	LENGTH "M"	LENGTH "B"	ROD LENGTH	ROD DIAMETER REF.	APPROXIMATE BREAK STRENGTH* (LBS/N)	SHOULDER PROTECTOR	UL LISTED	CSA APPROVED	PRODUCT SELECTION NUMBER
35270SS	1300941643	.50-.61 / 12.7-15.5	11.0±1.0 / 279±25	7.0±1.0 / 178±25	15.0±0.5 / 381±13	.093 / 2.36	770 / 3425	YES	NO	NO	SR050-UU
35271SS	1300940369	.62-.74 / 15.7-18.8	11.0±1.0 / 279±25	7.0±1.0 / 178±25	15.0±0.5 / 381±13	.093 / 2.36	1150 / 5115				SR062-UU
35272SS	1300940371	.75-.99 / 19.1-25.1	14.0±1.0 / 356±25	7.0±1.0 / 178±25	18.0±0.5 / 457±13	.093 / 2.36	1320 / 5872				SR075-UU
35273SS	1300940373	1.00-1.24 / 25.4-31.5	15.0±1.5 / 381±38	7.0±1.0 / 178±25	19.0±0.5 / 483±13	.093 / 2.36	1920 / 8541				SR100-UU
35274SS	1300940375	1.25-1.49 / 31.8-37.8	16.0±1.5 / 406±38	7.0±1.0 / 178±25	21.0±1.0 / 533±25	.125 / 3.18	1920 / 8541				SR125-UU
35275SS	1300940377	1.50-1.74 / 38.1-44.2	18.0±1.5 / 457±38	7.0±1.0 / 178±25	23.0±1.0 / 584±25	.125 / 3.18	1920 / 8541				SR150-UU
35276SS	1300940379	1.75-1.99 / 44.5-50.5	20.0±1.5 / 508±38	7.0±1.0 / 178±25	25.0±1.0 / 635±25	.125 / 3.18	3150 / 14012				SR175-UU
35277SS	1300940381	2.00-2.49 / 50.8-63.2	22.0±2.0 / 559±51	7.0±1.0 / 178±25	27.0±1.0 / 686±25	.156 / 3.96	3360 / 14946				SR200-UU
35278SS	1300941642	2.50-2.99 / 63.5-75.9	24.0±2.0 / 610±51	7.0±1.0 / 178±25	30.0±1.0 / 762±25	.156 / 3.96	3360 / 14946				SR250-UU
35279SS	1300940006	3.00-3.49 / 76.2-88.6	26.0±2.0 / 660±51	9.0±1.0 / 229±25	32.0±1.0 / 813±25	.156 / 3.96	7520 / 33451				SR300-UU
35280SS	1300940007	3.50-3.99 / 88.9-101.3	28.0±2.0 / 711±51	9.0±1.0 / 229±25	34.0±1.0 / 864±25	.156 / 3.96	7520 / 33451	SR350-UU			

* TO DETERMINE RECOMMENDED WORKING LOAD, DIVIDE BREAK STRENGTH BY 10.



VIEW SHOWN WITH SHOULDER PROTECTOR

ITEM	DESCRIPTION	MATERIAL
1	SHOULDER PROTECTOR	STAINLESS STEEL
2	BALE WIRE	STAINLESS STEEL
3	FERRULE	STAINLESS STEEL
4	CRIMP CONNECTOR	STAINLESS STEEL
5	WIRE MESH	STAINLESS STEEL
6	ROD	STAINLESS STEEL
7	LABEL	MYLAR

ADDED 1300941642 & 1643
 EC NO: IPC2016-1441
 DRWN: HRUIZ01 4/22/16
 CHKD: HRUIZ01 2016/04/22
 APPR: JFMURPHY 2015/10/28

DESCRIPTION

REV B

QUALITY SYMBOLS

▽=0

▽C=0

GENERAL TOLERANCES (UNLESS SPECIFIED)

	mm	INCH
4 PLACES	±---	±---
3 PLACES	±---	±.005
2 PLACES	±.13	±.010
1 PLACE	±.25	±.020

ANGULAR ±1/2°

DRAFT WHERE APPLICABLE MUST REMAIN WITHIN DIMENSIONS

DIMENSION STYLE INCH/MM

SCALE NTS

DESIGN UNITS INCH

THIRD ANGLE PROJECTION

TITLE

SUPPORT GRIPS SST
 STANDARD DUTY
 DOUBLE EYE SPLIT ROD

MOLEX MOLEX INCORPORATED

SD-130094-044

1 OF 1

DRAWN BY DATE KCOX01 2015/08/03

CHECKED BY DATE HRUIZ01 2015/08/03

APPROVED BY DATE JFMURPHY 2015/10/28

MATERIAL NO. SEE TABLE

SIZE A

THIS DRAWING CONTAINS INFORMATION THAT IS PROPRIETARY TO MOLEX INCORPORATED AND SHOULD NOT BE USED WITHOUT WRITTEN PERMISSION

6

5

4

3

2

1

E

E

D

D

C

C

B

B

A

A