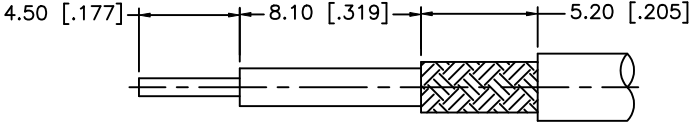
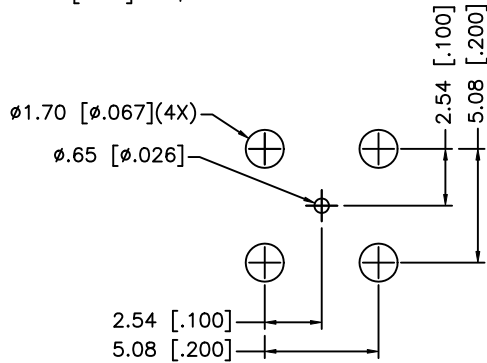
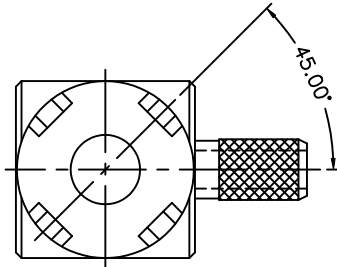
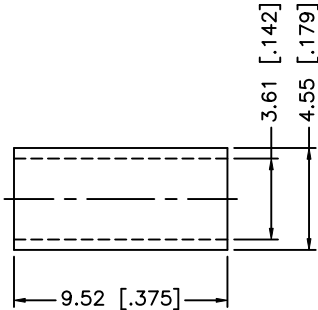
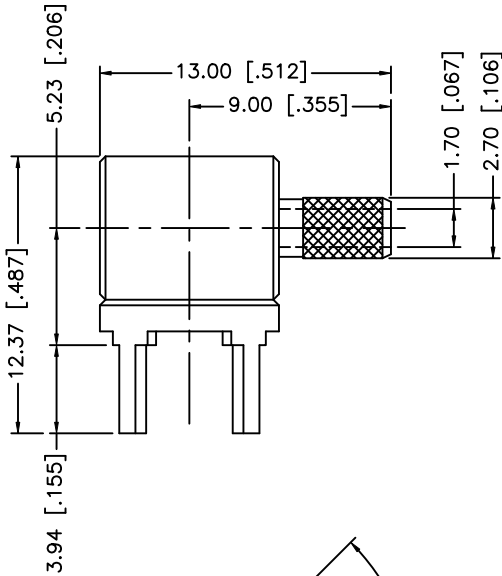
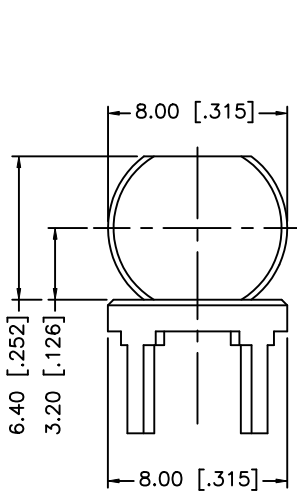


| REV. | DATE     | DESCRIPTION              |
|------|----------|--------------------------|
| NC   | 05/01/04 | INITIAL RELEASE          |
| A    | 04/02/08 | REVISE CABLE DESCRIPTION |



RECOMMENDED  
CABLE STRIPPING DIM'S



RECOMMENDED  
MOUNTING HOLES

NOTE:  
1. CRIMPED FERRULE HEC CRIMP SIZE .151"

|   |             |          |        |     |
|---|-------------|----------|--------|-----|
| 8 |             |          |        |     |
| 7 |             |          |        |     |
| 6 |             |          |        |     |
| 5 |             |          |        |     |
| 4 |             |          |        |     |
| 3 |             |          |        |     |
| 2 | FERRULE     | COPPER   | GOLD   | 1   |
| 1 | BODY        | BRASS    | GOLD   | 1   |
|   | DESCRIPTION | MATERIAL | FINISH | QTY |

UNLESS OTHERWISE SPECIFIED DIMENSIONS ARE IN MILLIMETERS. DIMENSIONS IN [ ] ARE IN INCHES AND FOR CUSTOMER REFERENCE ONLY.

UNLESS OTHERWISE SPECIFIED TOLERANCES FOR MILLIMETERS ARE:  
0.5 - 8mm ± 0.20mm  
8 - 30mm ± 0.40mm  
30 - 120mm ± 0.50mm

UNLESS OTHERWISE SPECIFIED TOLERANCES FOR INCHES ARE:  
.020 - .315 = ± 0.007"  
.315 - 1.180 = ± 0.015"  
1.180 - 4.724 = ± 0.020"

DO NOT SCALE DRAWING

| APPROVALS    | DATE              |
|--------------|-------------------|
| DRAWN G.R.S. | 04/02/08          |
| CHECKED      |                   |
| ISSUED       |                   |
| SHEET 1 OF 1 |                   |
| CAD FILE     | C:/142/142269.DWG |

|   |            |       |    |
|---|------------|-------|----|
| <h1>Amphenol Connex</h1>  |            |       |    |
| PART DESCRIPTION<br>R/A PCB CABLE TERMINAL<br>(FOR RG-316/U DOUBLE BRAID) |            |       |    |
| PART NO.<br>142269  |            |       |    |
| DWG. NO.  | 142269.DWG | REV.  | A  |
| SIZE  | A          | SCALE | NA |