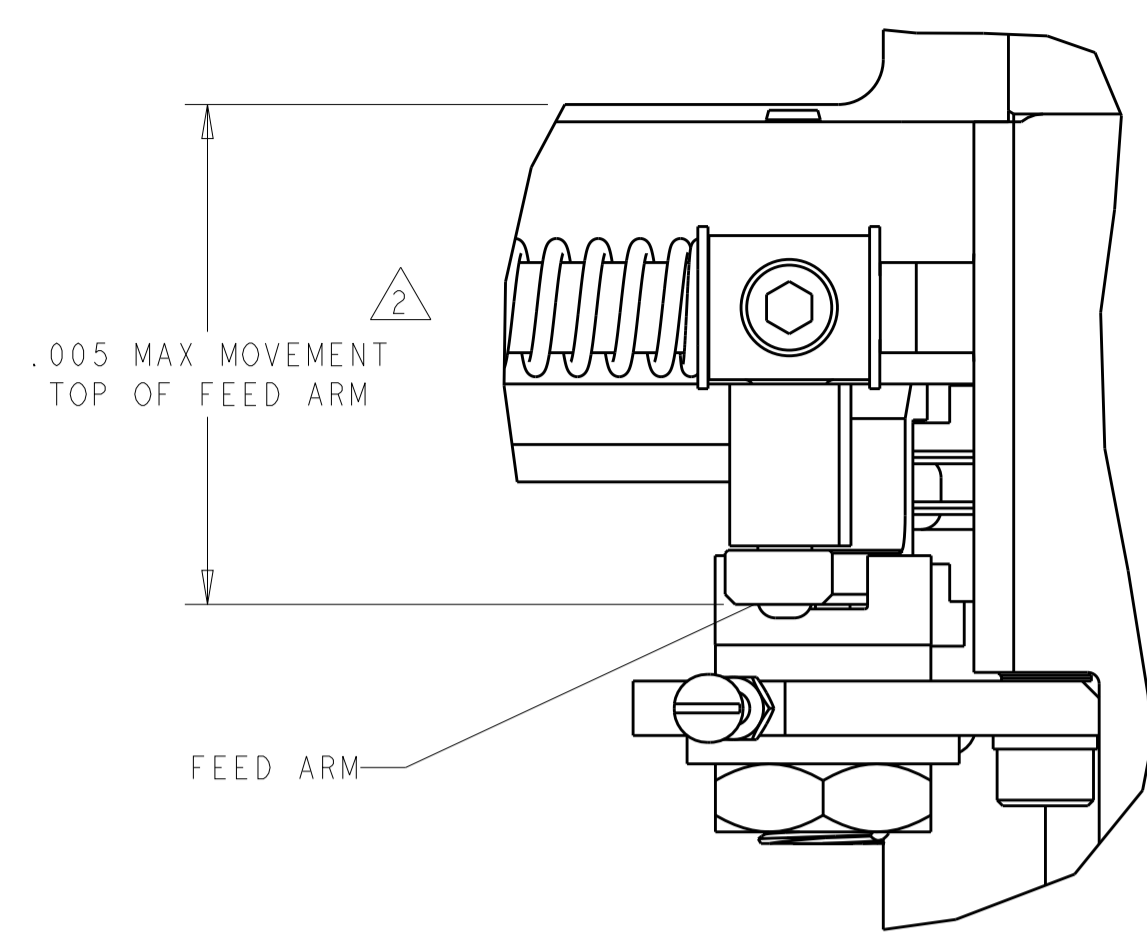


PART NUMBER	REV	FIRST USED	DESCRIPTION
1320999-1	R		ITEM 1 HOUSING FOR SET SCREW FEED TRACK
1320999-2	R		ITEM 1 HOUSING FOR SET SCREW FEED TRACK
1320999-3	U	-	ITEM 36 HOUSING FOR SPRING LOADED FEED TRACK
1320999-4	U	-	ITEM 36 HOUSING FOR SPRING LOADED FEED TRACK
1320999-5	N		SAME AS -3 LESS COUNTER
1320999-6	N		SAME AS -4 LESS COUNTER
1320999-7	U	-	SAME AS -3, INCLUDES MODIFIED BASE PLATE
1320999-8	U	-	SAME AS -3, FOR LARGE SEALS
1320999-9	U	-	SAME AS -3 W/MODIFIED HOUSING
1-1320999-0	U	-	KOMAX/PAWO/KIRSTEN
1-1320999-1	U	-	SIMILAR TO -3 W/ADDITIONAL ANVIL HOLE

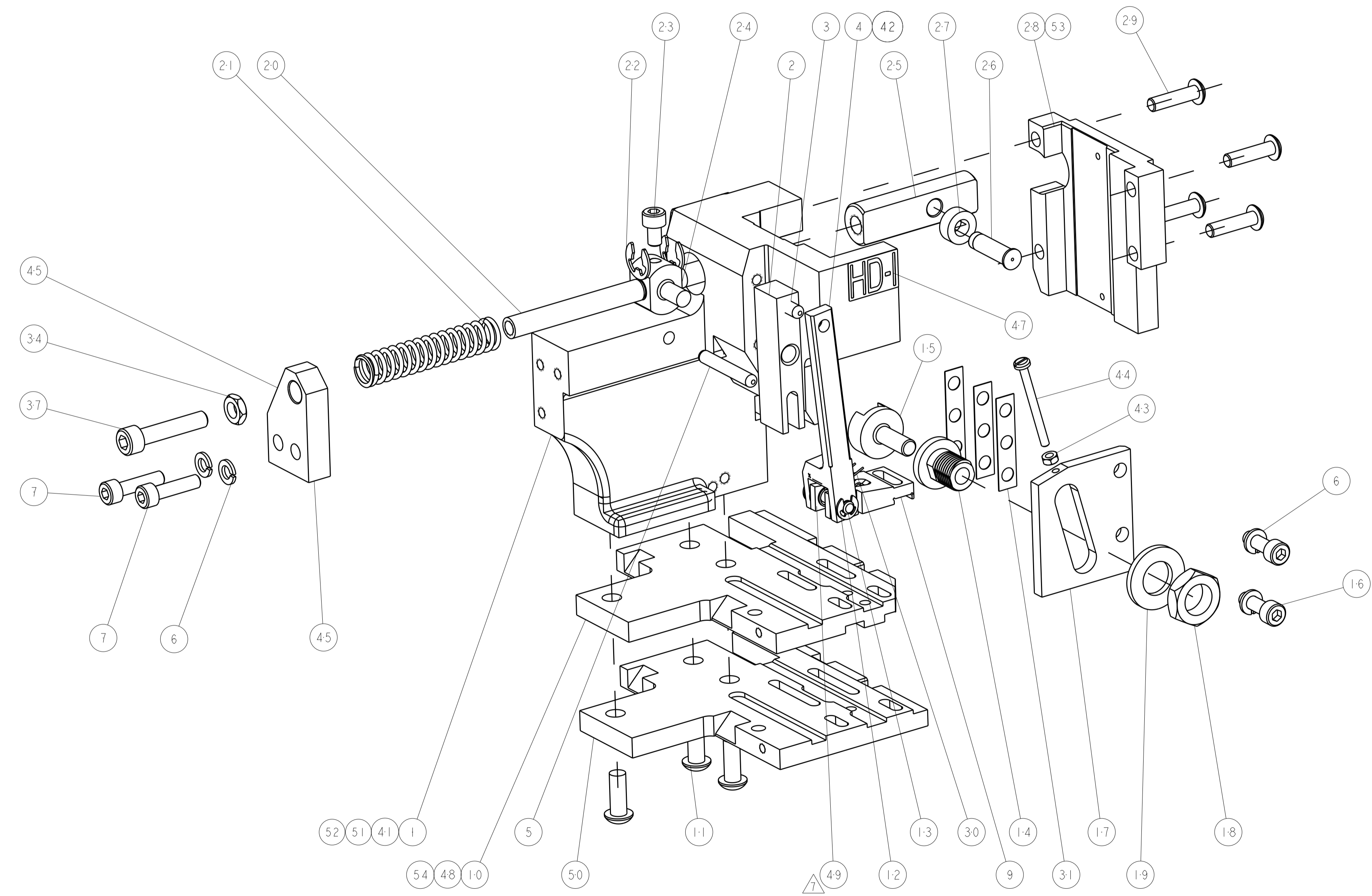
SUPERSEDED BY -3
 SUPERSEDED BY -4
 SUPERSEDED BY -3
 SUPERSEDED BY -4

DETAIL C-C
 FEED ARM ALIGNMENT
 SCALE 3:2



- 1 ROLLER MUST ROTATE AFTER ASSEMBLY
- 2 MODIFY LAMINATED SPACER AS REQUIRED TO REMOVE EXCESS CLEARANCE IN FEED LINKAGE
- 3 LUBRICATE USING #20 MACHINE OIL
- 4 IDENTIFY PART PER TEC-115-67-7
- 5 ALIGN HOUSING TO BASE PLATE USING ALIGNMENT GAGE 458637-3
- 6 FOR STAND ALONE COUNTER KIT PER PART NUMBER 1804312-1
- 7 ADD SHIM BETWEEN ITEMS 4 & 9 AS REQUIRED TO ELIMINATE SIDE TO SIDE MOVEMENT. (AS CLOSE TO ZERO AS POSSIBLE.)
- 8 THIS SUB-ASSEMBLY TO RUN ON THE FOLLOWING:
 KOMAX BT700 SSC
 KIRSTEN K750 STRIPPER CRIMPER SC
 PAWO BIG STRIPPER/SEALER/CRIMPER
 SCHLEUNIGER STRIP CRIMP Ø75.

THIS DRAWING IS A CONTROLLED DOCUMENT
 DIMENSIONING AND TOLERANCING PER ASME Y14.5M-2009



ITEM NO	QTY	DESCRIPTION	PART NO	REV	DATE	BY	CHK	APVD	SCALE	SIZE	DRAWING NO	SHEET	OF	REV
54	1	PLATE, BASE	1320992-5											
53	1	CAP, RAM	879287-3											
52	1	HOUSING, APPLICATOR	1803041-1											
51	1	HOUSING, SIDE FEED, MODIFIED	1633862-1											
50	1	PLATE, BASE	1320992-2											
49	1	SHIM	519035-3											
48	1	PLATE, BASE	1320992-3											
47	1	LABEL, HD-1 APPLICATOR	2-1768826-7											
46	1	SCREW, ADJUSTMENT	1338707-1											
45	1	SUPPORT, SCREW ADJ	1338668-1											
44	1	SCR, PAN SLT HD MACH M3 X 35.0	4-18019-4											
43	1	NUT, HEX, REG M3	18030-1											
42	1	ARM, FEED MACHINING	455679-2											
41	1	HOUSING, SIDE FEED, HDD	1633074-1											
37	1	SHCS, M6 X 30, SS	3-985563-1											
34	1	NUT, HEX JAM M6 S.S.	1655639-1											
31	1	SPACER, ADJ PLATE	690517-1											
30	1	SPRING-FEED FINGER	240638-1											
29	1	SCR, BTN SKT HD CAP (M5 X 20.0)	1-18024-4											
28	1	CAP, RAM	454220-1											
27	1	ROLLER-CAM	240658-1											
26	1	PIN, CAM ROLLER	240659-3											
25	1	ROD, FEED	1338677-2											
24	1	BLOCK, PIVOT	1338674-1											
23	1	SCR, SKT HD CAP M5 X 8.0	9-18023-5											
22	1	E-RING (EXT. RETAIN. RING), METRIC	986963-8											
21	1	SPRING, COMPRESSION	4-22284-9											
20	1	SCREW, ADJUSTMENT	1804307-1											
19	1	WASHER, FLAT, REG M12	18027-7											
18	1	NUT, HEX, THIN M12X1.25	992326-6											
17	1	PLATE, ADJUSTING	1338671-1											
16	1	SCR, SKT HD CAP M5 X 16.0	2-18023-0											
15	1	SHAFT-PIVOT AMP-O-MATOR	240626-1											
14	1	BUSHING	1338670-1											
13	1	PIN, FEED FINGER	1338672-1											
12	1	E-RING (EXT. RETAIN. RING), METRIC	986963-2											
11	1	SCR, BTN SKT HD CAP M6X16.0 W/NYLOK	994988-1											
10	1	PLATE, BASE	1320992-1											
9	1	HOLDER, FEED FINGER MACHINING	690541-1											
7	1	SCR, SKT HD CAP M5 X 20.0	2-18023-1											
6	1	WASHER, SPRG LOCK, REG M5	18025-3											
5	1	PIN, DOWEL .1875 X 1.250	1-21030-6											
4	1	ARM, FEED MACHINING	455679-1											
3	1	PIN, DOWEL .1875 X .500	1-21030-1											
2	1	LEVER, INTERMEDIATE	455680-1											
1	1	HOUSING, SIDE FEED	1320991-1											

SUPERSEDED BY -4
 SUPERSEDED BY -3
 SUPERSEDED BY -4
 SUPERSEDED BY -3

LOC A
 DIST 19

REV	DESCRIPTION	DATE	BY	CHK	APVD
U	ECR-007472	03MAY2013	MY	GB	
T	ECR-11-021712	25OCT2011	BH	BH	
S	ECR-11-021672	25OCT2011	BH	BH	

TE Connectivity

SCALE: 1:1 A1 DRAWING NO: 1320999 SHEET 1 OF 1 REV U

CUSTOMER ACCESSIBLE PRODUCTION DRAWING