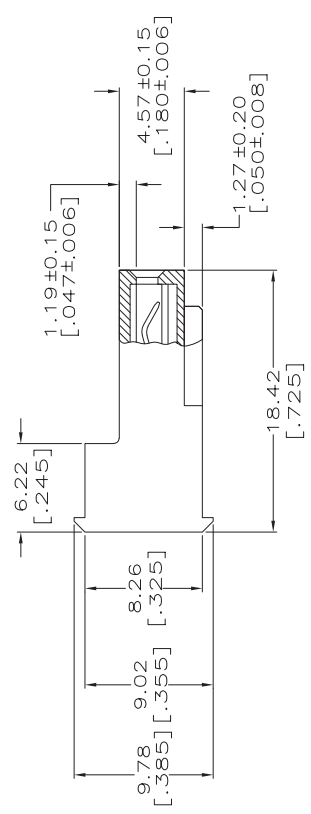
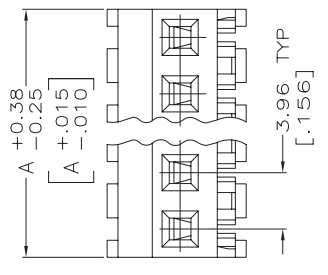
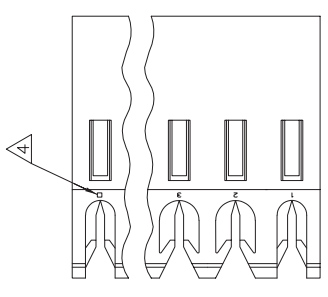


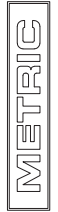
THIS DRAWING IS UNPUBLISHED. RELEASED FOR PUBLICATION BY TYCO ELECTRONICS CORPORATION. ALL RIGHTS RESERVED.

LOC	DIST	REVISONS	DATE	UN	APD
CM	O	DESCRIPTION	21JUN07	KW	DB
	L	ECC-07-012879			



- 1** MATERIAL: CONNECTOR - NYLON UL94V-2 (YELLOW). CONTACTS - 0.30[0.12] THICK COPPER ALLOY. PLATING - 0.0038[0.00015] GOLD IN CONTACT AREA. 0.00203[0.00080] MIN THICKNESS BRIGHT TIN-LEAD IN SLOT AREA FOR 641174-2 THRU 2-641174-4 OR MATTE WHISKER MITIGATED TIN IN THE SLOT AREA FOR 3-641174-2 THRU 5-641174-4 OVER NICKEL UNDERPLATE.
- 2** CONTACTS ACCEPT 20 AWG WIRE WITH 2.41[0.095] MAX INSULATION DIAMETER.
- 3** CONTACTS MUST ACCEPT 1.14±0.03[0.045±0.001] SQUARE POST AND REMAIN LOCKED IN POSITION.
- 4** IDENTIFICATION NUMBER FOR LAST CIRCUIT MAY NOT APPEAR ON ALL ASSEMBLIES.
- 5** DIMENSIONS IN BRACKETS ARE IN INCHES.
- 6** HOUSING FEATURES ARE: FEED-THRU WITHOUT LOCKING RAMP.

- 7** CONTACTS ACCEPT 20 AWG WIRE WITH 2.41[0.095] MAX INSULATION DIAMETER.
- 8** CONTACTS MUST ACCEPT 1.14±0.03[0.045±0.001] SQUARE POST AND REMAIN LOCKED IN POSITION.
- 9** IDENTIFICATION NUMBER FOR LAST CIRCUIT MAY NOT APPEAR ON ALL ASSEMBLIES.
- 10** DIMENSIONS IN BRACKETS ARE IN INCHES.
- 11** HOUSING FEATURES ARE: FEED-THRU WITHOUT LOCKING RAMP.
- 12** NOTE DELETED.
- 13** NOTE DELETED.



QTY	DESCRIPTION	DATE	UN	APD
24	95.10 [3.744]	5-641174-4		
23	91.14 [3.588]	5-641174-3		
22	87.17 [3.432]	5-641174-2		
21	83.21 [3.276]	5-641174-1		
20	79.25 [3.120]	5-641174-0		
19	75.29 [2.964]	4-641174-9		
18	71.32 [2.808]	4-641174-8		
17	67.36 [2.652]	4-641174-7		
16	63.40 [2.496]	4-641174-6		
15	59.44 [2.340]	4-641174-5		
14	55.47 [2.184]	4-641174-4		
13	51.51 [2.028]	4-641174-3		
12	47.55 [1.872]	4-641174-2		
11	43.59 [1.716]	4-641174-1		
10	39.62 [1.560]	4-641174-0		
9	35.66 [1.404]	3-641174-9		
8	31.70 [1.248]	3-641174-8		
7	27.74 [1.092]	3-641174-7		
6	23.77 [0.936]	3-641174-6		
5	19.81 [0.780]	3-641174-5		
4	15.85 [0.624]	3-641174-4		
3	11.89 [0.468]	3-641174-3		
2	7.92 [0.312]	3-641174-2		
24	95.10 [3.744]	2-641174-4		
23	91.14 [3.588]	2-641174-3		
22	87.17 [3.432]	2-641174-2		
21	83.21 [3.276]	2-641174-1		
20	79.25 [3.120]	2-641174-0		
19	75.29 [2.964]	1-641174-9		
18	71.32 [2.808]	1-641174-8		
17	67.36 [2.652]	1-641174-7		
16	63.40 [2.496]	1-641174-6		
15	59.44 [2.340]	1-641174-5		
14	55.47 [2.184]	1-641174-4		
13	51.51 [2.028]	1-641174-3		
12	47.55 [1.872]	1-641174-2		
11	43.59 [1.716]	1-641174-1		
10	39.62 [1.560]	1-641174-0		
9	35.66 [1.404]	641174-9		
8	31.70 [1.248]	641174-8		
7	27.74 [1.092]	641174-7		
6	23.77 [0.936]	641174-6		
5	19.81 [0.780]	641174-5		
4	15.85 [0.624]	641174-4		
3	11.89 [0.468]	641174-3		
2	7.92 [0.312]	641174-2		

THIS DRAWING IS A CONTROLLED DOCUMENT.		REV	DATE	BY
DIMENSIONS: mm [INCHES]		B. LEWIS	3-11-98	
TOLERANCES UNLESS OTHERWISE SPECIFIED:		OK	3-11-98	
0 P/LC	±	APD		
1 P/LC	±			
2 P/LC	±			
3 P/LC	±			
ANGLES	±			
FINISH	±			
MATERIAL	-			
CONTRACT FINISH		DIM A		
NO. OF CIRCUITS		PART NO.		
CUSTOMER DRAWING		Tyco Electronics Corporation		
SCALE		Harrisburg, Pa 17105-3608		
DRAWING NO		MTA-156 CONNECTOR ASSEMBLY,		
SIZE		20 AWG, STANDARD		
GAGE CODE		A2 00779		
RESTRICTED TO		641174		
SHEET		4:1		
OF		1		