

Customer Information Sheet

DRAWING No.: M80-710XXXX

SHEET 2 OF 2

IF IN DOUBT - ASK

©

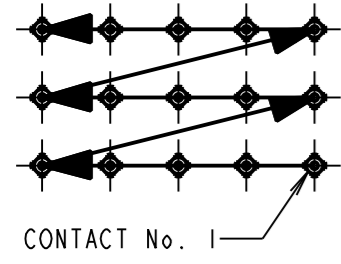
NOT TO SCALE

THIRD ANGLE PROJECTION

ALL DIMENSIONS IN mm

- NOTES:
- FROM No. 1 POSITION, CONTACTS NUMBERED IN SEQUENCE FROM RIGHT TO LEFT AND FROM BOTTOM ROW TO TOP ROW (LOOKING ON MATING FACE).
 - FOR COMPLETE SPECIFICATION, SEE COMPONENT SPECIFICATION C017XX (LATEST ISSUE).

OBSOLETE



SPECIFICATION

MATERIALS:
 MOULDING = POLYAMIDE 46 UL94V-0
 CONTACTS = BRASS
 JACKSCREWS, WASHERS & NUTS = STAINLESS STEEL

FINISH:

POWER CONTACTS:
 05 = 0.25 - 0.3µ 100% GOLD
 22 = 0.75µ GOLD, TIN/LEAD SOLDER OVER TAILS
 42 = 0.75µ GOLD, 100% TIN SOLDER OVER TAILS

PIN CONTACTS:
 05 = 0.25 - 0.3µ 100% GOLD
 22 = 0.75µ GOLD, 3.0µ 90/10 TIN/LEAD OVER TAILS
 42 = 0.75µ GOLD, 3.0µ 100% TIN ON TAILS

ELECTRICAL:
 CURRENT RATING AT 25°C = 3.0A MAX
 CURRENT RATING AT 85°C = 2.2A MAX
 VOLTAGE PROOF = 360V AC/DC

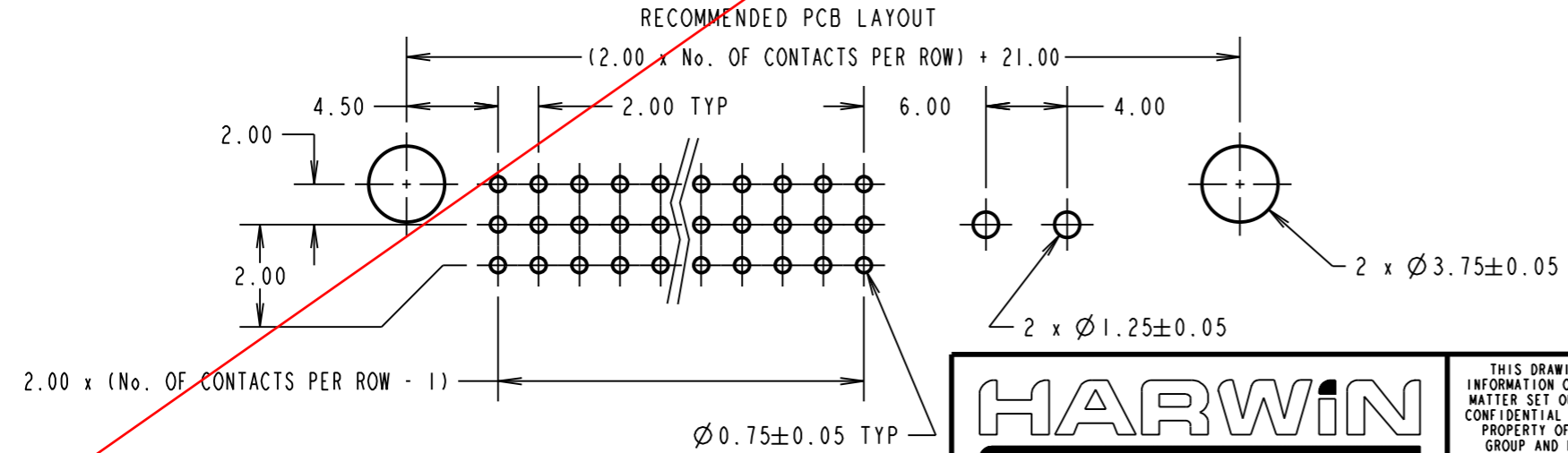
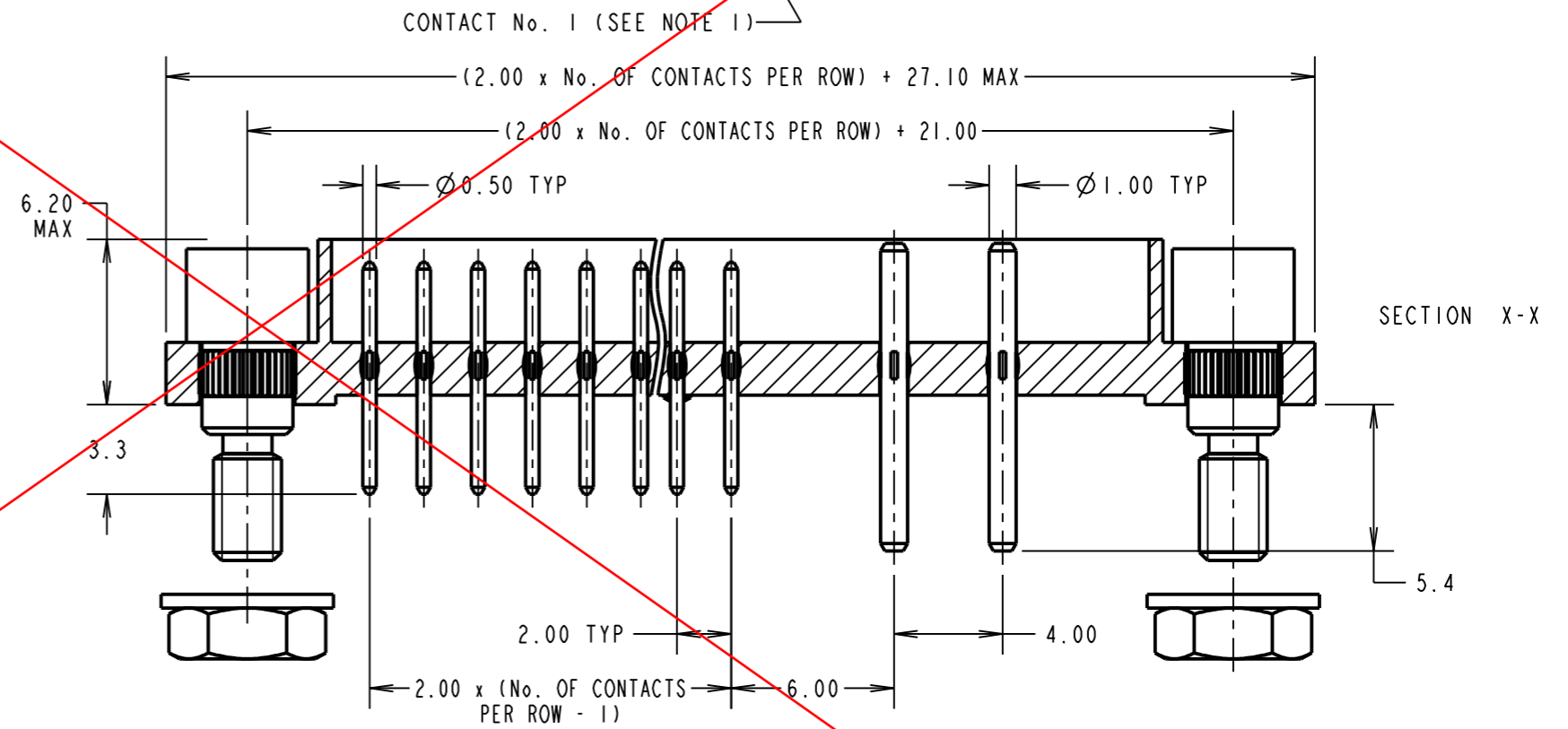
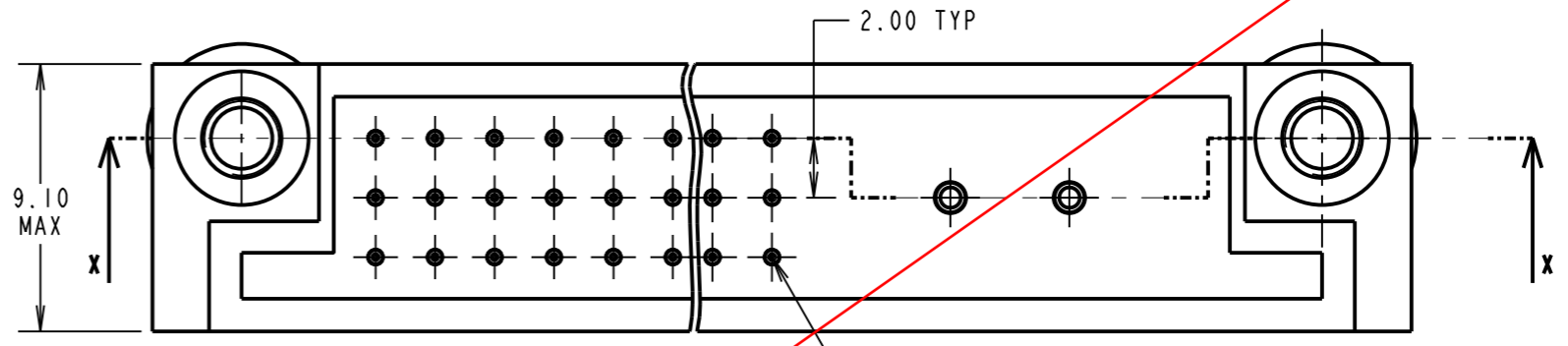
CONTACT RESISTANCE:
 INITIAL = 20mΩ MAX
 AFTER CONDITIONING = 25mΩ MAX

INSULATION RESISTANCE:
 INITIAL = 1000MΩ MIN
 AFTER CONDITIONING = 100MΩ MIN

MECHANICAL:
 DURABILITY = 500 OPERATIONS

ENVIRONMENTAL:
 TEMPERATURE RANGE = -55°C TO +125°C

PACKING:
 TRAYS



ORDER CODE: **M80-710XXXX**

TOTAL No. OF CONTACTS (EXCLUDING POWER CONTACTS)
 06, 15, 24, 30, 42

FINISH:
 05 - GOLD
 22 - SELECTIVE GOLD + TIN/LEAD
 42 - SELECTIVE GOLD + 100% TIN

MSP	10	21.04.15	12811
NAME	ISS.	DATE	C/NOTE
APPROVED: M.PERREN			
CHECKED: S.BENNETT			
DRAWN: D. BECK			
CUSTOMER REF.:			
ASSEMBLY DRG:			

HARWIN

www.harwin.com
 technical@harwin.com

THIS DRAWING AND ANY INFORMATION OR DESCRIPTIVE MATTER SET OUT HEREON ARE CONFIDENTIAL AND COPYRIGHT PROPERTY OF THE HARWIN GROUP AND MUST NOT BE DISCLOSED, LOANED, COPIED OR USED FOR MANUFACTURING, TENDERING OR FOR ANY OTHER PURPOSE WITHOUT THEIR WRITTEN PERMISSION.

TOLERANCES
 X. = ±1mm
 X.X = ±0.50mm
 X.XX = ±0.10mm
 X.XXX = ±0.01mm
 ANGLES = ±5°
 UNLESS STATED

MATERIAL: SEE ABOVE

FINISH: SEE ABOVE

S/AREA: mm²

TITLE: 3-ROW 2mm PITCH CONNECTOR, MALE STRAIGHT PC TAILS + POWER CONTACTS

DRAWING NUMBER: M80-710XXXX

SHT 2 OF 2