



ELECTRONICS, INC.
 44 FARRAND STREET
 BLOOMFIELD, NJ 07003
 (973) 748-5089
<http://www.nteinc.com>

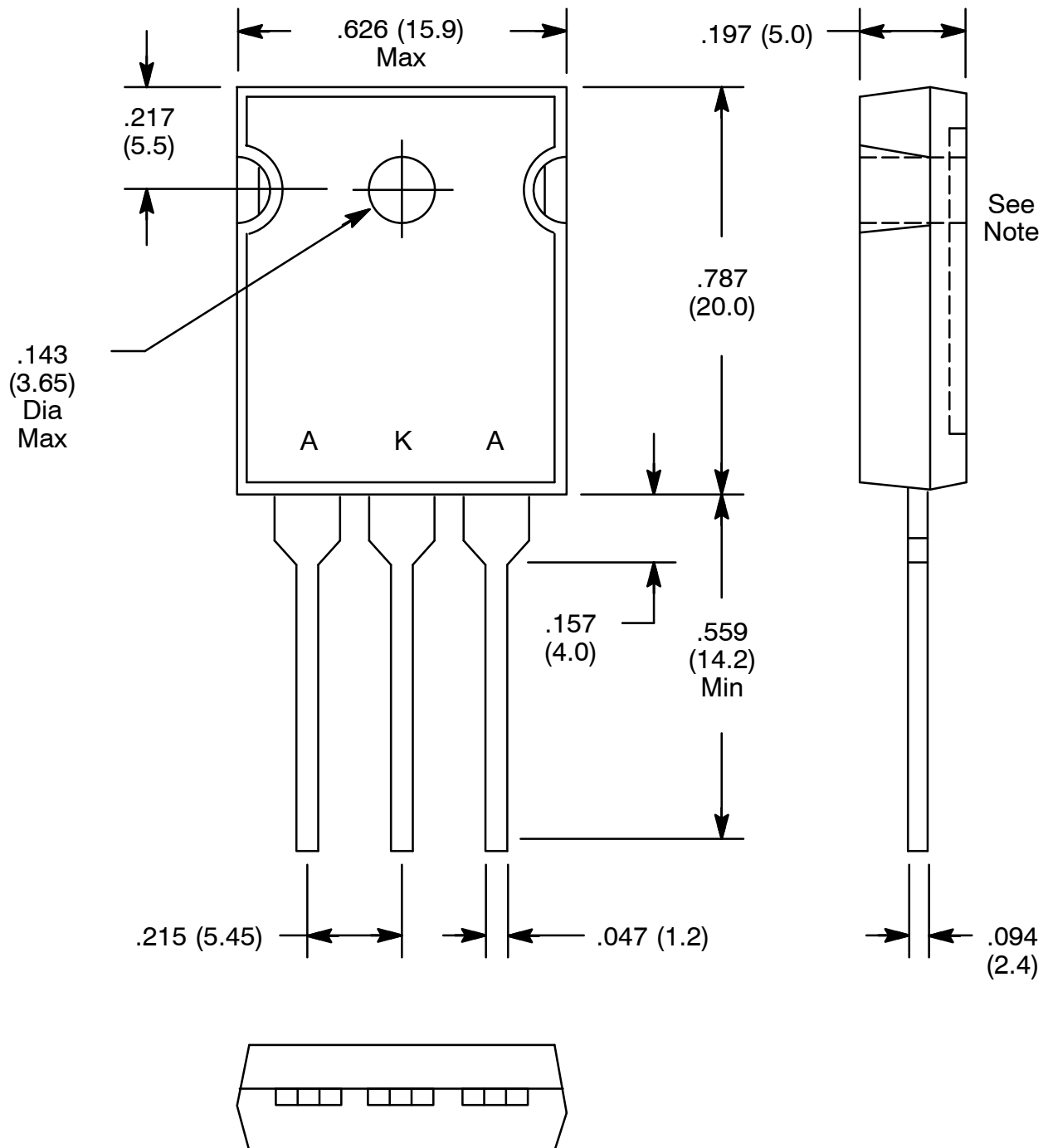
NTE6091 Silicon Schottky Barrier Rectifier 45V, 40 Amp, TO247

Features:

- Guarding for Stress Protection
- Low Forward Voltage
- +125°C Operating Junction Temperature

Maximum and Electrical Ratings:

Maximum Peak Repetitive Reverse Voltage, V_{RRM}	45V
Maximum Working Peak Reverse Voltage, V_{RWM}	45V
Maximum DC Blocking Voltage, V_R	45V
Maximum RMS Reverse Voltage, $V_{R(RMS)}$	31V
Maximum Average Rectified Forward Current ($V_R = 45V, T_C = +125^\circ C$), $I_{F(AV)}$	
Per Leg	20A
Total Device	40A
Peak Repetitive Forward Current ($V_R = 45V$, Square Wave, 20kHz, $T_C = +125^\circ C$ Max), I_{FRM} .	40A
Non-Repetitive Peak Surge Current, I_{FSM}	
(Surge Applied at Rated Load Conditions, Halfwave, Single Phase, 60Hz)	300A
Operating Junction Temperature Range, T_J	-65° to +250°C
Storage Temperature Range, T_{stg}	-65° to +250°C
Maximum Instantaneous Forward Voltage ($I_F = 20A$), V_F	
$T_C = +125^\circ C$	0.50V
$T_C = +25^\circ C$	0.55V
Maximum Instantaneous Reverse Current (rated DC voltage), I_R	
$T_C = +125^\circ C$	10mA
$T_C = +25^\circ C$	100mA



Note: Pin2 connected to metal part of mounting surface.