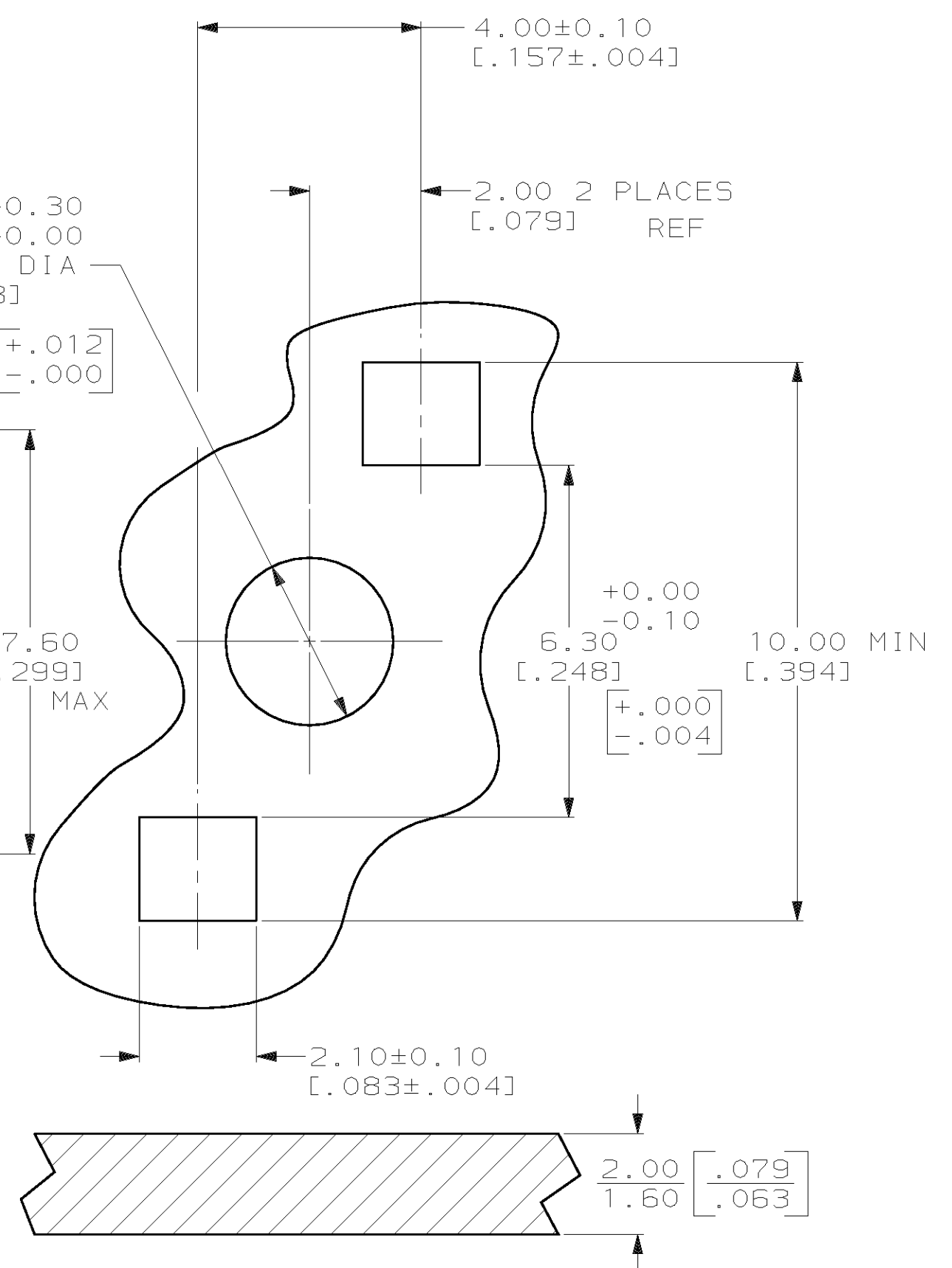
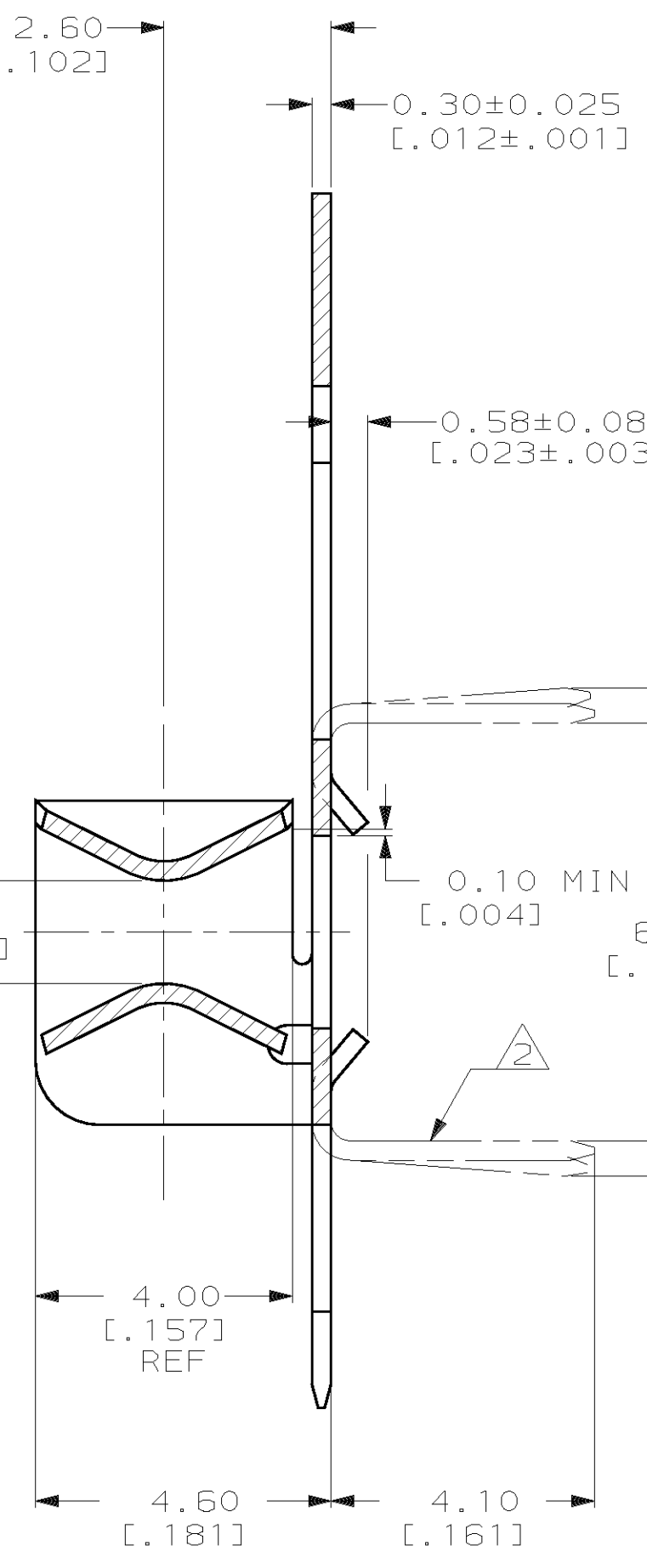
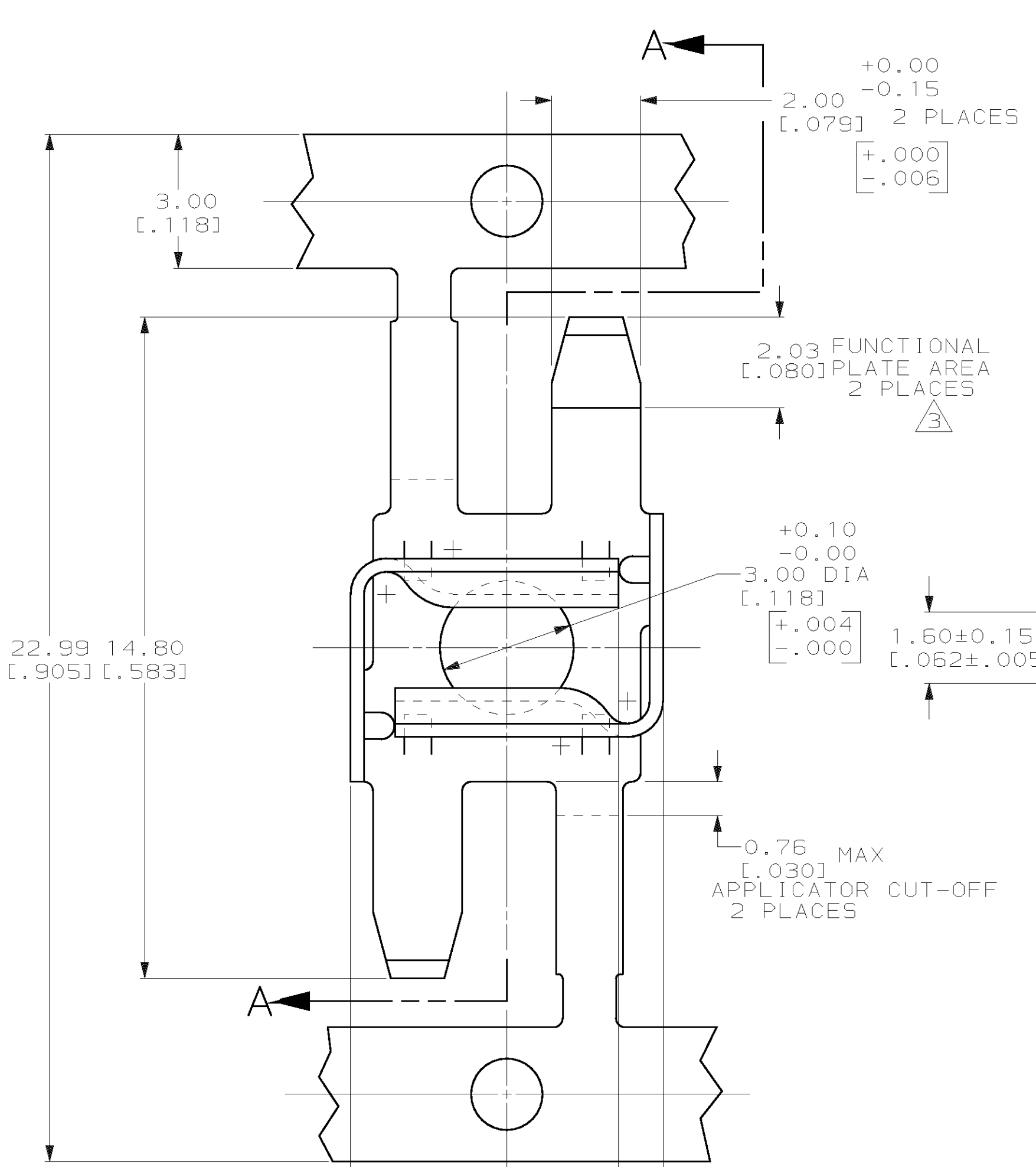


LOC		DIST		P		F		ZONE		LTR		REVISIONS		DATE	APPD	
AF	50												E	ADD -2 PER 0L10-0469-97	12/JAN/98	PF/JW



- 1 CONTINUOUS STRIP ON REELS.
- 2 TINES BENT 90° IN APPLICATOR PRIOR TO ASSEMBLY INTO P.C. BOARD.
- 3 0.00508 [0.000200] MIN TIN IN FUNCTIONAL PLATE AREA, 0.00254 [0.000100] MIN TIN ON REMAINDER.
- 4 PRODUCT COMPLIES WITH AMP SOLDERABILITY SPEC 109-11-5. WHEN PLATED AND 109-11-1 AFTER TWO YEARS OF SHELF LIFE

DO NOT SCALE PRINT. UNLESS SPECIFIED DIMENSIONS IN mm [INCHES] TOLERANCES ON : 2 PLC DEC ± - 3 PLC DEC ± 0.25 [0.010] ANGLES ± 1°	DR 2/2/90 MICHAEL S. FEHER CHK 2/5/90 JR RUTH APPD 2/13/90 D. SCHWENK APPD 2/19/90 TERRY L. SHUTTER
MATERIAL #4 HARD PHOSPHOR BRONZE	PRODUCT SPEC -
FINISH 3	APPLICATION SPEC -
WEIGHT -	

TRAVERSE WOUND	63566-2
NORMAL	63566-1
REELING	PART NO
AMP AMP INCORPORATED Harrisburg, Pa. 17105	
NAME PIN RECEPTACLE, PRINTED CIRCUIT BOARD, 2.25 [0.088]-2.36 [0.093] DIA	
SIZE C	CAGE CODE 00779
SCALE 10:1	DRAWING NO 63566
	SHEET 1 OF 1