



SAW Components

Data Sheet K 3350 K

Data Sheet

A large, stylized, 3D-rendered graphic of the word "EPCOS" in a light gray color, set against a dark, textured background that resembles a globe or a complex circuit board. The letters are slightly tilted and have a glowing effect.



SAW Components

K 3350 K

IF Filter for Quasi/Split Sound Applications

38,90 MHz

Data Sheet

Standard

- B/G
- D/K

Features

- TV IF filter for quasi/split sound applications (separate picture and sound channel)
- Picture channel with Nyquist slope and sound suppression
- Reduced group delay predistortion as compared with standard B/G half
- Sound channel with one passband for sound carriers at 32,40 MHz (D/K) and 33,40 MHz (B/G)
- Suitable for CENELEC EN 55020

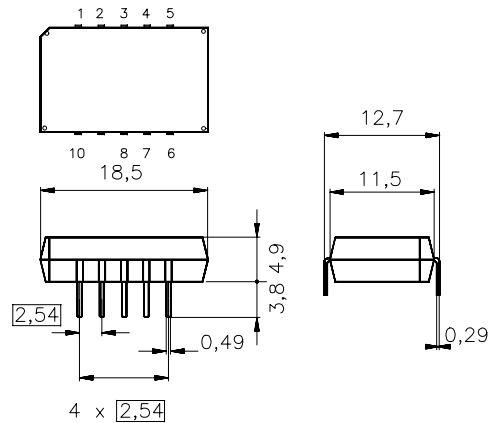
Terminals

- Tinned CuFe alloy

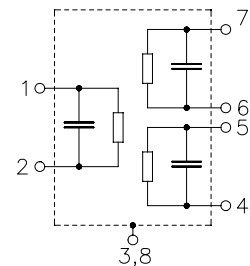
Pin configuration

- 1 Input
- 2 Input - ground
- 3; 8 Chip carrier - ground
- 4; 5 Output - sound
- 6; 7 Output - picture
- 9 Free
- 10 Not connected

Plastic package **DIP10K**



Dimensions in mm, approx. weight 1,8 g



Type	Ordering code	Marking and package according to	Packing according to
K 3350 K	B39389-K3350-K100	C61157-A2-A3	F61074-V8068-Z000

Maximum ratings

Operable temperature range	T_A	-25/+65	°C	
Storage temperature range	T_{stg}	-40/+85	°C	
DC voltage	V_{DC}	5	V	between any terminals
AC voltage	V_{pp}	10	V	between any terminals


SAW Components
K 3350 K
IF Filter for Quasi/Split Sound Applications
38,90 MHz
Data Sheet
Characteristics of picture channel

Reference temperature: $T_A = 25\text{ °C}$
 Terminating source impedance: $Z_S = 50\ \Omega$
 Terminating load impedance: $Z_L = 2\text{ k}\Omega \parallel 3\text{ pF}$

		min.	typ.	max.	
Insertion attenuation					
	α				
Reference level for the following data	37,40 MHz	13,0	14,5	16,0	dB
Relative attenuation					
	α_{rel}				
Picture carrier	38,90 MHz	5,2	6,2	7,2	dB
Color carrier	34,47 MHz	0,4	1,4	2,4	dB
Sound carrier	33,40 MHz	34,0	43,0	—	dB
Adjacent picture carrier	30,90 MHz	45,0	53,0	—	dB
	31,90 MHz	47,0	57,0	—	dB
	31,40 MHz	—	60,0	—	
	32,40 MHz	47,0	55,0	—	
	40,15 MHz	43,0	59,0	—	
Adjacent sound carrier	40,40 MHz	45,0	56,0	—	dB
	41,40 MHz	43,0	55,0	—	dB
Lower sidelobe	25,00 ... 31,90 MHz	39,0	44,0	—	dB
Upper sidelobe	40,40 ... 45,00 MHz	34,0	40,0	—	dB
Reflected wave signal suppression					
1,3 μ s ... 6,0 μ s after main pulse (test pulse 250 ns, carrier frequency 37,40 MHz)		42,0	52,0	—	dB
Feedthrough signal suppression					
1,2 μ s ... 1,1 μ s before main pulse (test pulse 250 ns, carrier frequency 37,40 MHz)		50,0	56,0	—	dB
Group delay predistortion					
(reference frequency 38,90 MHz)					
	$\Delta\tau$				
	36,90 MHz	—	-90	—	ns
	34,47 MHz	—	30	—	ns
Impedance at 37,40 MHz					
	Input: $Z_{IN} = R_{IN} \parallel C_{IN}$	—	1,1 24,8	—	k Ω pF
	Output: $Z_{OUT} = R_{OUT} \parallel C_{OUT}$	—	1,6 4,1	—	k Ω pF
Temperature coefficient of frequency					
	TC_f	—	-72	—	ppm/K



SAW Components

K 3350 K

IF Filter for Quasi/Split Sound Applications

38,90 MHz

Data Sheet

Characteristics of sound channel

Reference temperature: $T_A = 25\text{ °C}$
 Terminating source impedance: $Z_S = 50\ \Omega$
 Terminating load impedance: $Z_L = 2\text{ k}\Omega \parallel 3\text{ pF}$

		min.	typ.	max.	
Insertion attenuation					
	α				
Reference level for the following data	33,40 MHz	12,5	14,0	15,5	dB
Relative attenuation					
	α_{rel}				
Sound carrier	33,05 MHz	-1,5	-0,5	0,5	dB
	32,40 MHz	-1,4	-0,4	0,6	dB
Picture carrier	38,90 MHz	41,0	49,0	—	dB
Color carrier	34,47 MHz	28,0	34,0	—	dB
Adjacent picture carrier	30,90 MHz	36,0	43,0	—	dB
Adjacent sound carrier	40,40 MHz	44,0	52,0	—	dB
	41,40 MHz	46,0	56,0	—	dB
Lower sidelobe	25,00 ... 30,90 MHz	36,0	41,0	—	dB
Upper sidelobe	38,90 ... 45,00 MHz	41,0	48,0	—	dB
Impedance at 33,40 MHz					
	Output: $Z_{OUT} = R_{OUT} \parallel C_{OUT}$	—	3,6 \parallel 2,3	—	k Ω \parallel pF
Temperature coefficient of frequency					
	TC_f	—	-72	—	ppm/K



SAW Components

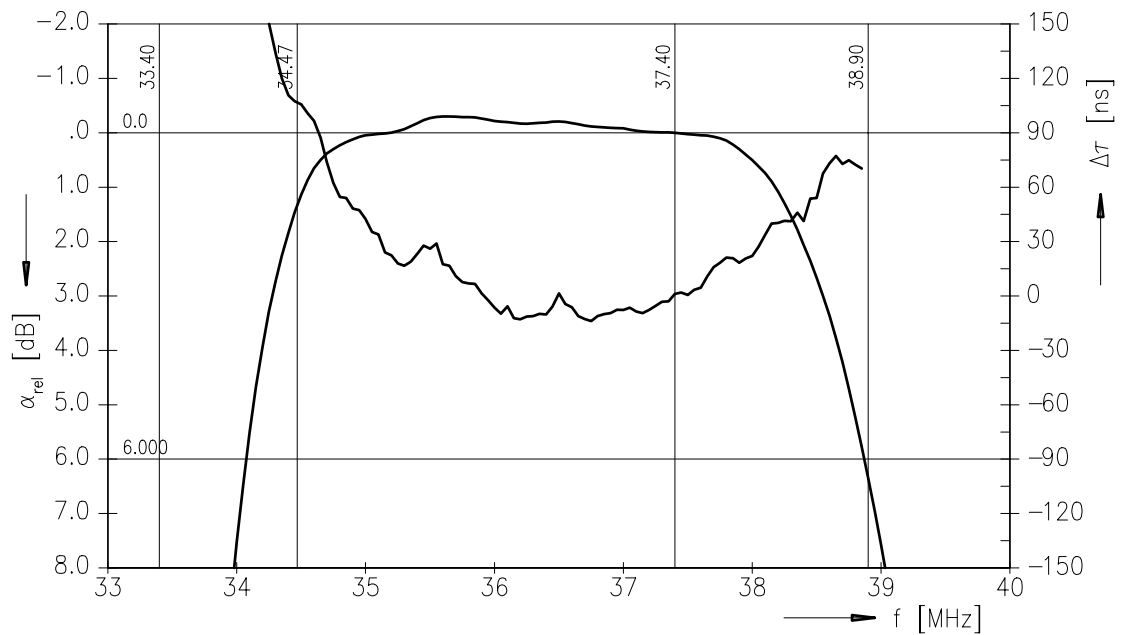
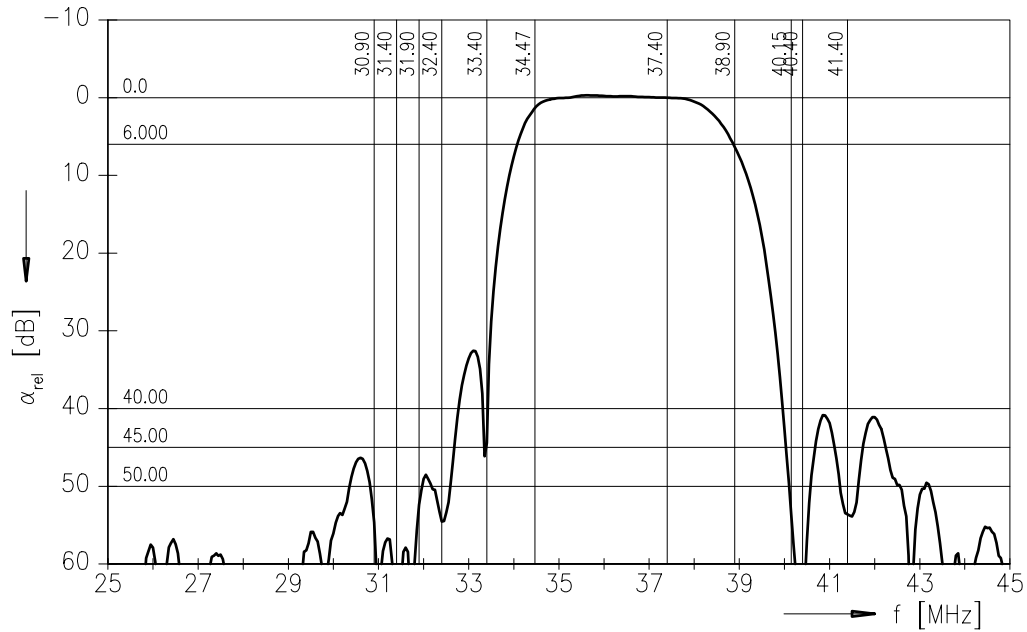
K 3350 K

IF Filter for Quasi/Split Sound Applications

38,90 MHz

Data Sheet

Frequency response of picture channel





SAW Components

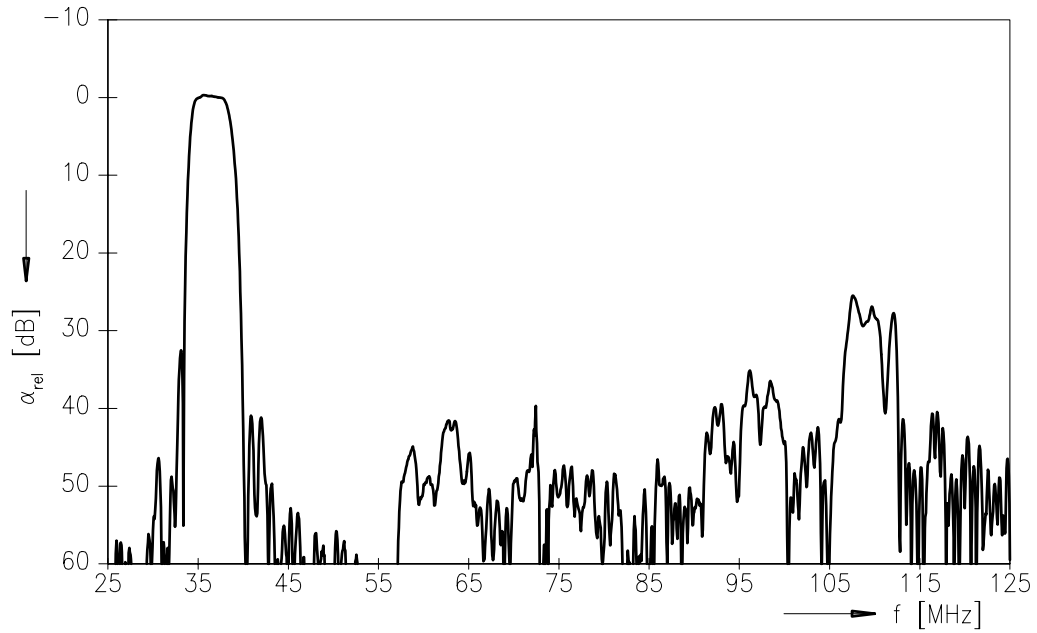
K 3350 K

IF Filter for Quasi/Split Sound Applications

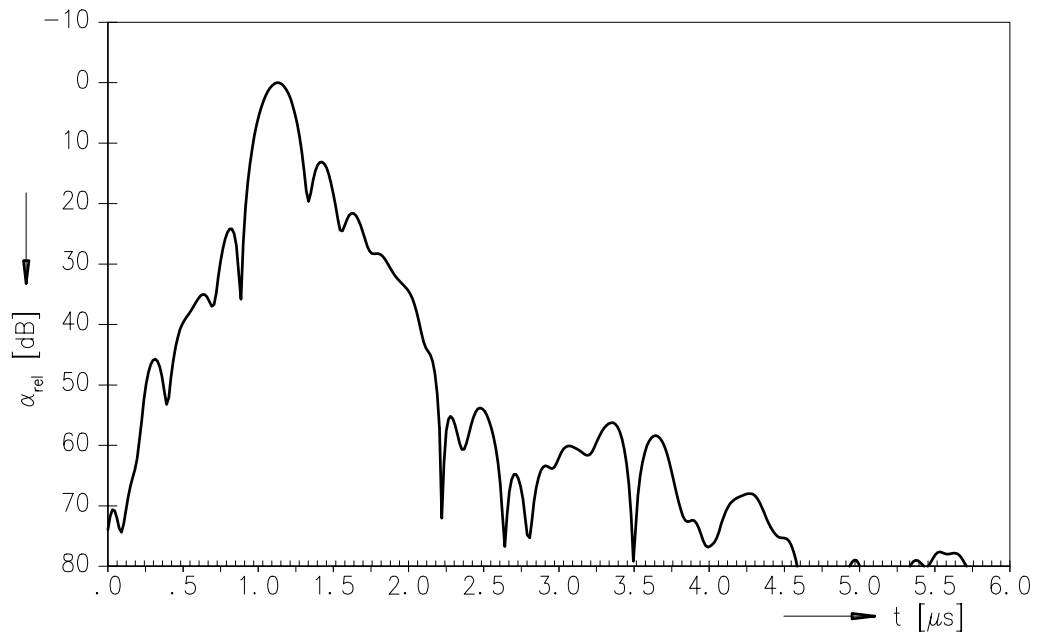
38,90 MHz

Data Sheet

Frequency response of picture channel



Time domain response of picture channel





SAW Components

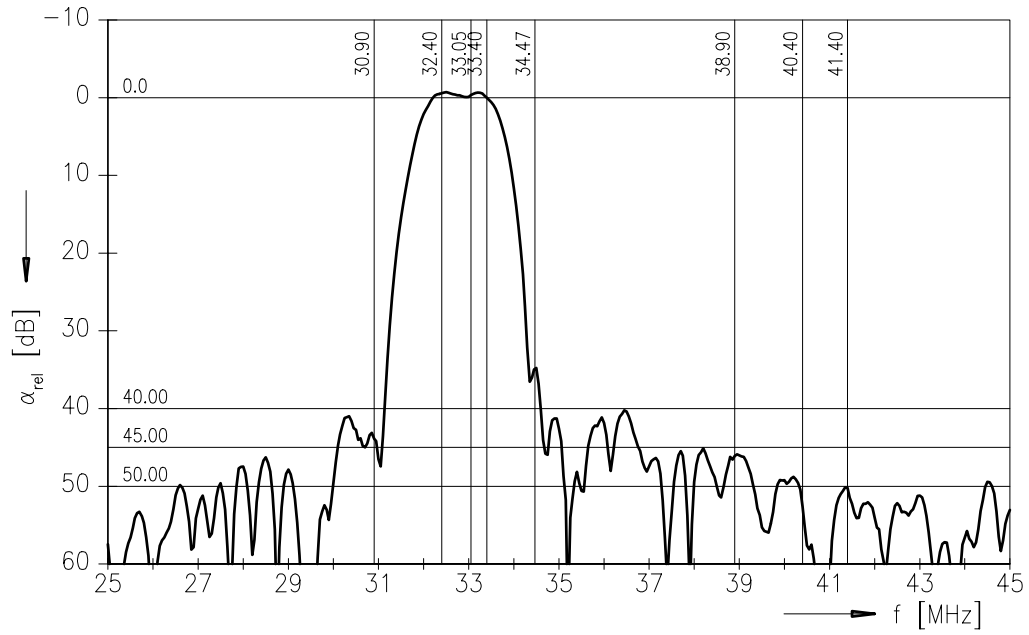
K 3350 K

IF Filter for Quasi/Split Sound Applications

38,90 MHz

Data Sheet

Frequency response of sound channel





SAW Components

K 3350 K

IF Filter for Quasi/Split Sound Applications

38,90 MHz

Data Sheet

Published by EPCOS AG

Surface Acoustic Wave Components Division, SAW CE MM PD

P.O. Box 80 17 09, D-81617 München

© EPCOS AG 2001. All Rights Reserved.

As far as patents or other rights of third parties are concerned, liability is only assumed for components per se, not for applications, processes and circuits implemented within components or assemblies.

The information describes the type of component and shall not be considered as assured characteristics.

Terms of delivery and rights to change design reserved.

For questions on technology, prices and delivery please contact the sales offices of EPCOS AG or the international representatives.

Due to technical requirements components may contain dangerous substances. For information on the type in question please also contact one of our sales offices.