

PART NUMBER	REV	TERMINATOR	FEED TYPE	DESCRIPTION
1529242-1	D	BENCH & LEADMAKER	MECH POST FEED	HDI APPLICATOR
7-1529242-1	D	BENCH & LEADMAKER	MECH POST FEED	-1 AND SPARE PARTS
7-1529242-7	A	-	-	SPARE PARTS KIT

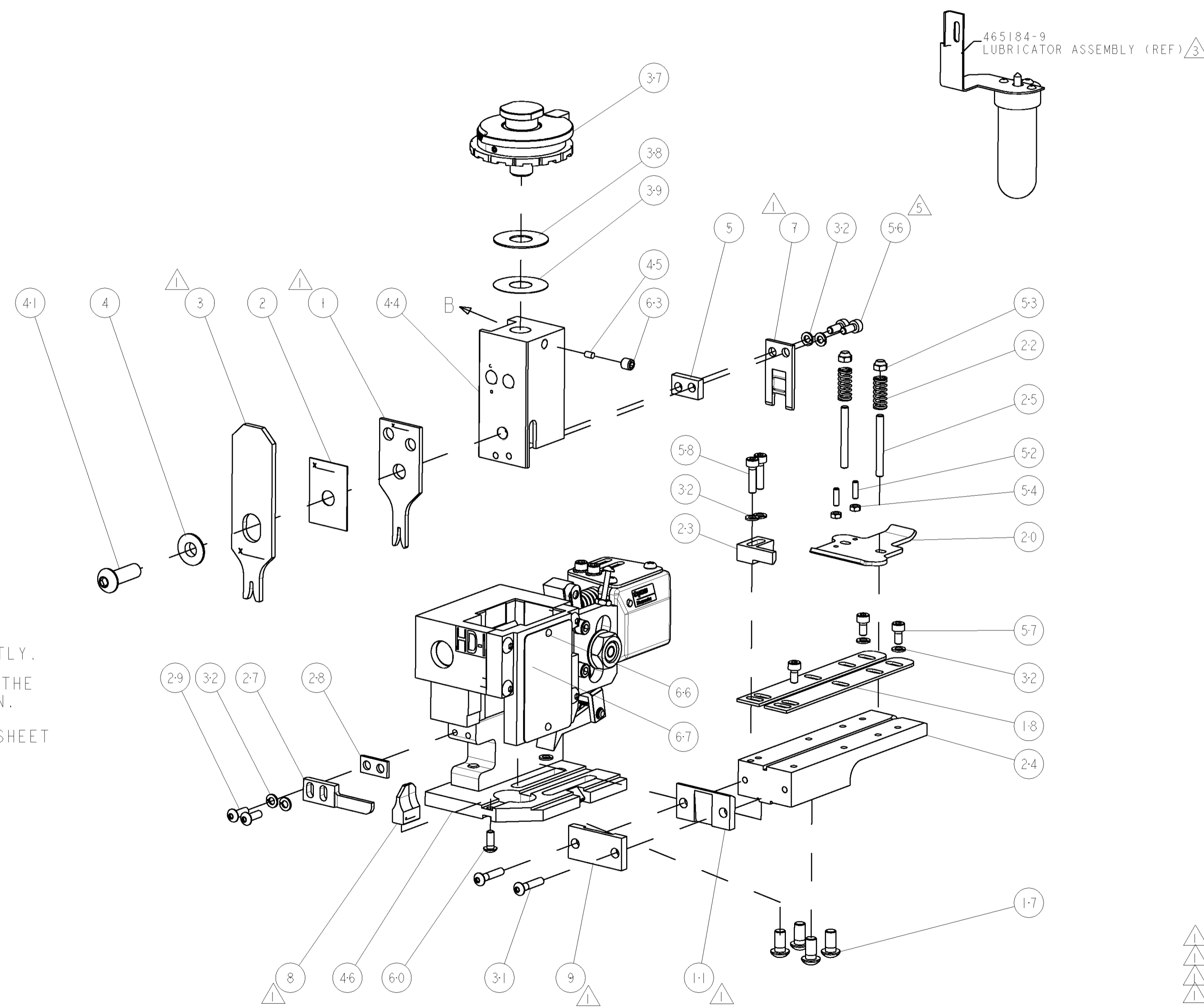
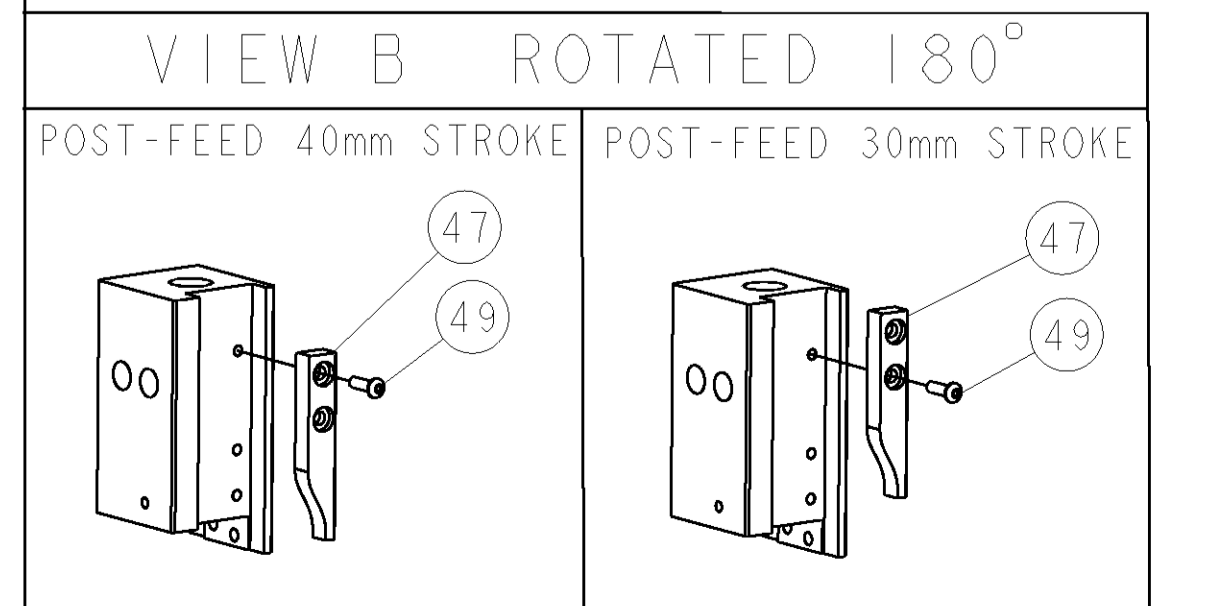
LOC	DIST	REV	DATE	BY	APPV
A	66				
A		SEE ECO-07-015743	04JUL2007	DP	MC
B		SEE ECR-07-023818	08OCT2007	LJL	MC
C		ECR-08-010331	23APR2008	MY	GB
D		ECR-08-018098	18JUL2008	MY	TE

CRIMP DATA	TE TERMINAL	TE CRIMP SPECS
TERMINAL NAME: FASTIN-FASTON 2.8MM RECEPTACLE		
CRIMP	SIZE	TYPE
WIRE	1.57 [0.062 IN]	F
INSUL	2.03 [0.080 IN]	O
RANGE 0.50mm ²		
WIRE STRIP LENGTH 3.40-4.20 [0.134-.165 IN]		APPL INSTRUCTIONS 408-8323 & 408-8490
TERMINAL 114-18022		FEED 16.80 [0.661 IN]
APPL SPEC		

TERMINALS APPLIED	WIRE SIZE	CRIMP HEIGHT	REF SETTING
1703450	0.50mm ²	0.99 ±0.03 [0.039 ±.001 IN]	C2
-	-	-	-
-	-	-	-
-	-	-	-
-	-	-	-
-	-	-	-
-	-	-	-
-	-	-	-
-	-	-	-
-	-	-	-

- RECOMMENDED SPARE PARTS
- GREASE RAM, CAM, CAM FOLLOWER AND FEED ROD LIGHTLY.
- CERTAIN TERMINALS REQUIRE LUBRICATION. REFER TO THE APPLICATOR INSTRUCTION SHEET FOR MORE INFORMATION.
- LUBRICATE DAILY PER THE APPLICATOR INSTRUCTION SHEET SUPPLIED WITH THE APPLICATOR.

*** WARNING**
 ON INSTALLATION, SET WIRE DISC TO LARGEST WIRE SIZE SETTING. USE OF SETTINGS BELOW MIN. REQUIRED CRIMP HEIGHT SETTING WILL CAUSE DAMAGE TO CRIMP TOOLING.



QTY	REV	DESCRIPTION	ITEM NO
-	1	1338705-4 DOCUMENTATION PACKAGE	71
-	1	461264-5 PLATE, IDENTIFICATION	67
-	2	21017-2 SCREW, DRIVE	66
-	1	3-18031-0 SCR, SET, CUP POINT M6 X 6.0	63
-	1	18024-7 SCR, BTN SKT HD CAP (M4 X 10.0)	60
-	2	1-18023-3 SCR, SKT HD CAP M4 X 16.0	58
-	3	1-18023-0 SCR, SKT HD CAP M4 X 8.0	57
-	2	1-18023-1 SCR, SKT HD CAP M4 X 10.0	56
-	2	18029-1 NUT, HEX, REG M3	54
-	2	986965-1 NUT, LOCK, HEX, TORQUE (M4)	53
-	2	2-18032-2 SCR, SET, FLT POINT M3 X 10.0	52
-	1	18024-3 SCR, BTN SKT HD CAP (M3 X 10.0)	49
-	1	1338676-1 CAM, UNIVERSAL POST-FEED	47
-	1	1338662-1 SUB ASSY, APPLICATOR FRAME	46
-	1	690191-1 PLUG, NYLON	45
-	1	1320998-1 RAM	44
-	1	2-18024-6 SCR, BTN SKT HD CAP (M8 X 25.0)	41
-	1	690125-1 SHIM SUB-ASSY	39
-	1	469367-8 SHIM	38
-	1	879103-3 FINE ADJUST HEAD ASSEMBLY	37
-	9	18025-2 WASHER, SPRG LOCK, REG M4	32
-	2	1-18024-0 SCR, BTN SKT HD CAP (M4 X 20.0)	31
-	2	18024-8 SCR, BTN SKT HD CAP (M4 X 12.0)	29
-	1	3-690451-2 SPACER, STRIPPER	28
-	1	240639-1 STRIPPER (MACHINING)	27
-	2	1320906-1 STUD, THREADED	25
-	1	1-1320995-0 PLATE, STRIP GUIDE	24
-	1	240825-6 PLATE, STRIP HOLD DOWN	23
-	2	4-22281-1 SPRING, DRAG	22
-	1	1338665-1 DRAG	20
-	2	1338663-3 GUIDE, LOWER STRIP	18
-	4	1-18024-8 SCR, BTN SKT HD CAP (M6 X 12.0)	17
-	1	240833-4 PLATE, REAR SHEAR	11
-	1	690482-7 PLATE, FRONT SHEAR	9
-	2	1-1633383-8 ANVIL, COMBINATION	8
-	1	690474-7 BLADE, SLUG	7
-	1	5-240641-0 SPACER	5
-	1	238009-1 BLOCK, FL CRIMPER SPACER	4
-	1	1-904741-5 CRIMPER, INSUL O PREMIUM	3
-	1	455888-4 SPACER, CRIMPER	2
-	1	2-456403-6 CRIMPER, WIRE PREMIUM	1
-77	-71	-1 PART NO	

DWN D. PROUSE 02APR2007		Tyco Electronics Tyco Electronics Harrisburg, PA 17105-3608	
CHK M. CLIFFORD 02APR2007		NAME FINE ADJUST END FEED HDI APPLICATOR	
DIMENSIONS: INCHES		PRODUCT SPEC	
TOLERANCES UNLESS OTHERWISE SPECIFIED:		APPLICATION SPEC	
0 PLC ±	1 PLC ±0.1	SIZE	CAGE CODE DRAWING NO
2 PLC ±0.01	3 PLC ±0.001	A11	00779 C=1529242
4 PLC ±0.0001	ANGLES ±	REVISION	SCALE 3:5 SHEET 1 OF 1 REV D
MATERIAL FINISH		CUSTOMER DRAWING	