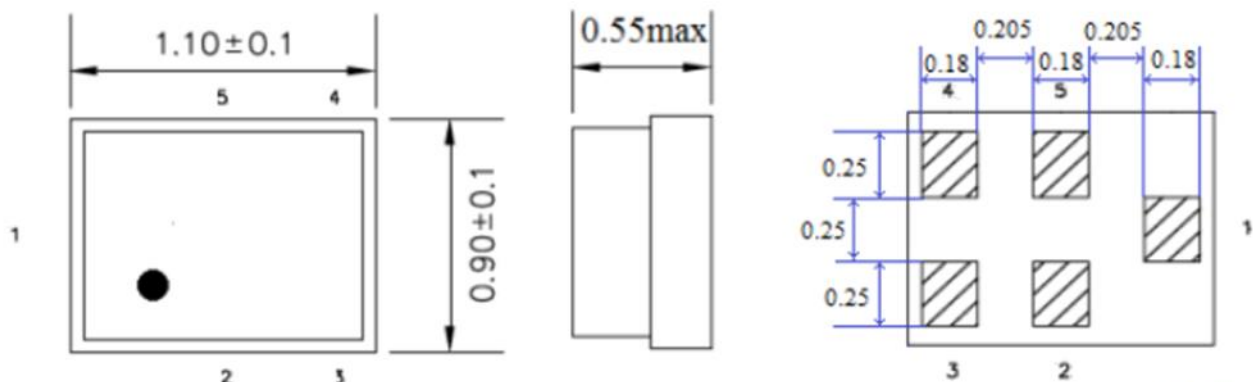


### Electrical Specification

Parameters		Value	Unit
Insertion Loss, typ/max	1805 ~ 1880 MHz	1.6 / 2.5	dB
Pass Band Ripple, typ/max	1805 ~ 1880 MHz	0.7 / 2.0	dB
VSWR, typ/max	ANT	1805 ~ 1880 MHz	1.8 / 2.2
	Rx		1.8 / 2.2
Amplitude Balance, typ/max	1805 ~ 1880 MHz	±0.7 / ±1.5	dB
Phase Balance, typ/max	1805 ~ 1880 MHz	180±6 / 180±12	°
Attenuation, min/typ	100 ~ 1300 MHz	-35 / -40	dB
	1300 ~ 1705 MHz	-20 / -30	dB
	1705 ~ 1785 MHz	-5 / -6	dB
	1920 ~ 1980 MHz	-12 / -15	dB
	1980 ~ 3000 MHz	-17 / -21	dB
	3000 ~ 4000 MHz	-40 / -48	dB
	4000 ~ 5000 MHz	-45 / -50	dB
	5000 ~ 6000 MHz	-27 / -35	dB
6000 ~ 8500 MHz	-20 / -40	dB	
Input Power, max, 2000h		15	dBm
DC Voltage		5	V
Terminating Source Impedance (unbalanced)		50	Ω
Terminating Load Impedance (balanced)		150 or 100	Ω
ESD Voltage Sensitive Discharge Device	ESD (MM)	50	VDC
	ESD (HBM)	175	VDC
Operating Temperature Range		-30 to +85	°C
Storage Temperature Range		-40 to +85	°C

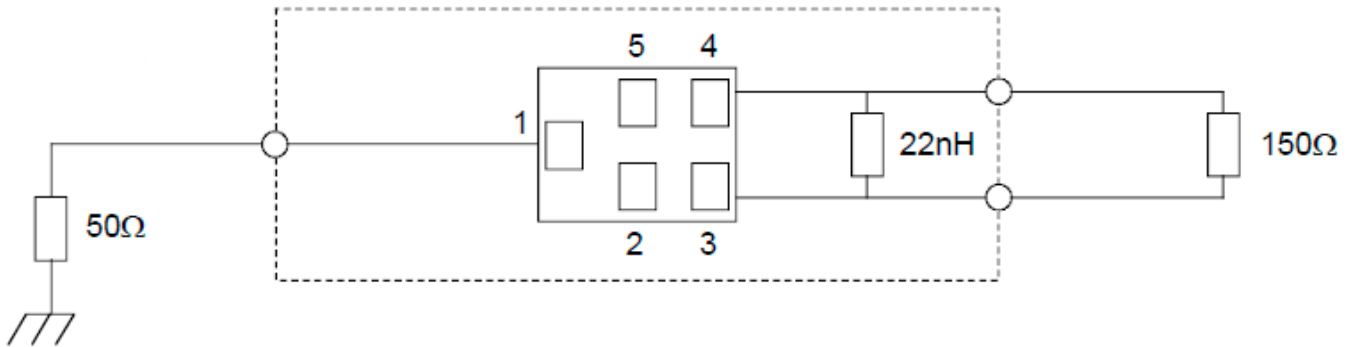
### Dimension



PIN #	PIN NAME	DESCRIPTION
1	IN	Input
3,4	OUT	Balanced Output
2,5	GND	Ground

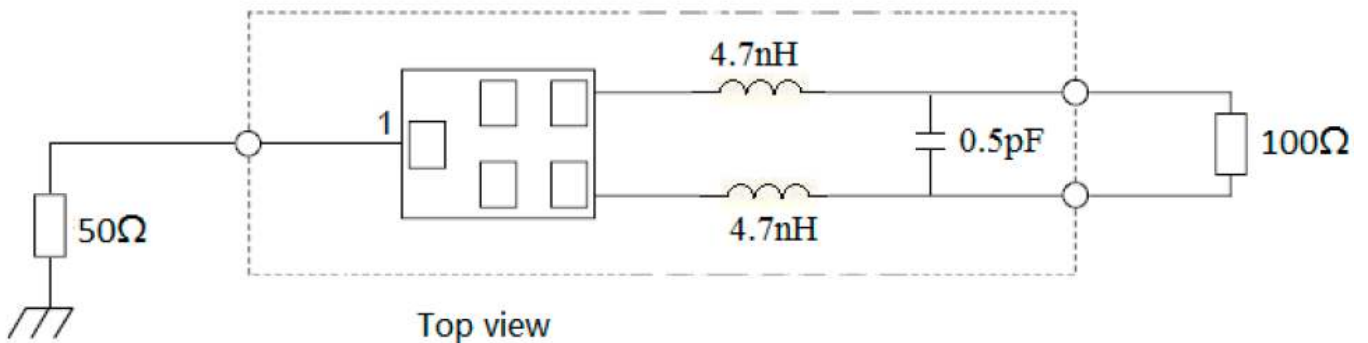
Unit: mm

### Test Circuit



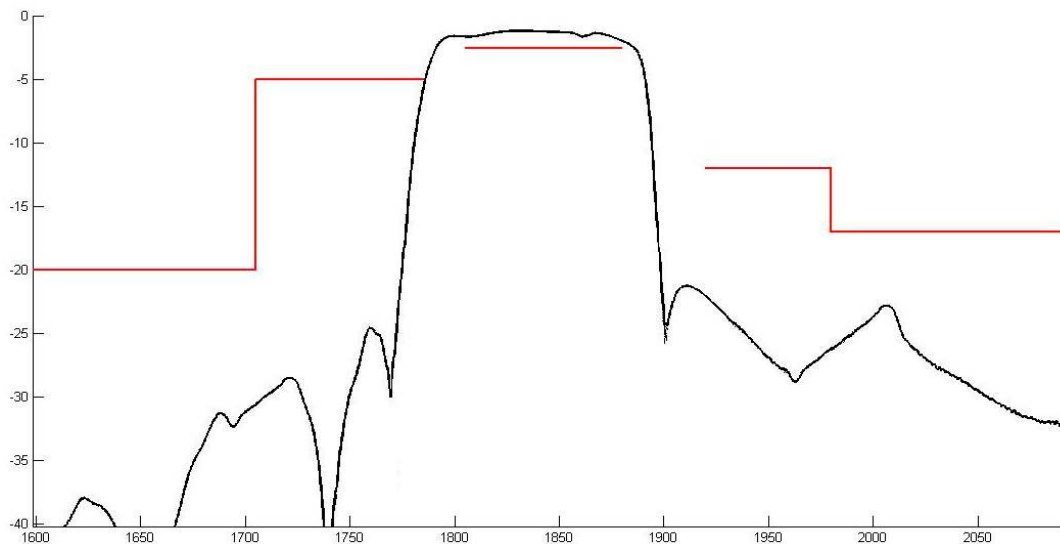
TOP VIEW

OR



Top view

### Frequency Characteristics

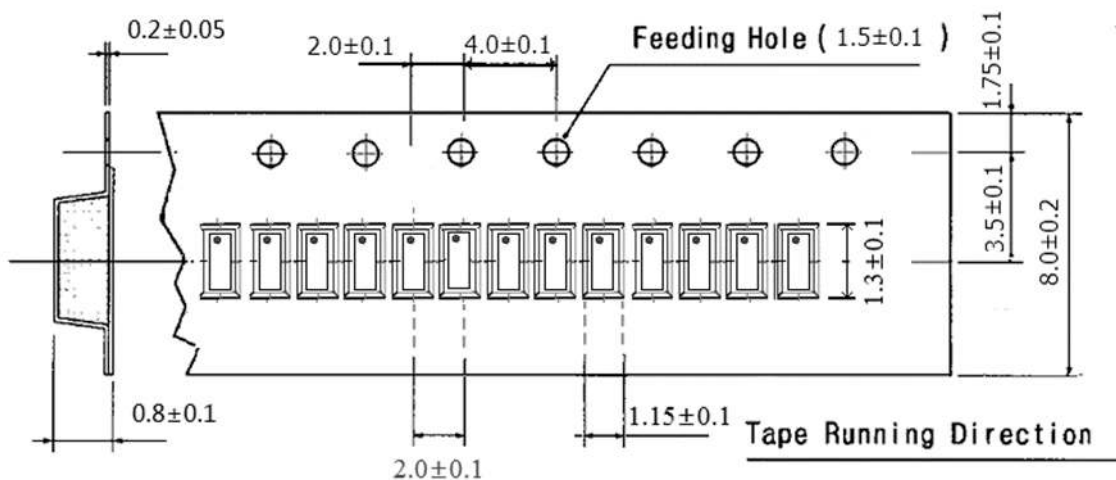


### Environmental

PARAMETER	VALUE
MOISTURE SENSITIVITY LEVEL	2
REACH – SVHC	Compliant
RoHS	Compliant
PACKAGING	TAPE & REEL



### Tape Dimension



### APPROVAL

DRAWN BY	ZZ, August 11, 2021
APPROVED BY	AR, August 11, 2021
REVISION	A, Initial Release

Raltron Electronics / RAMI Technology USA, LLC, including its affiliates, employees, agents and other persons acting on its behalf (collectively Raltron/RAMI Tech), disclaim any and all liability for any errors or inaccuracies contained in this data sheet. While Raltron/RAMI Tech has made every reasonable effort ensure the accuracy of all product information, specifications and data contained herein, Raltron/RAMI Tech does not guarantee that the information is accurate, reliable or current. The product information is provided only for reference purposes only and is subject to change, correction or revision, at any time without notice. Raltron/RAMI Tech does not assume any liability arising out of an application or use of any product described herein and disclaims any warranties expressed or implied. The user of products in such applications shall assume all risks of such use and will agree to hold Raltron/RAMI Tech, harmless against all damages.

Copyright © 2016, Raltron Electronics / RAMI Technology USA, LLC. All rights reserved. No part of this document may be reproduced in any form without the prior written permission of Raltron Electronics / RAMI Technology USA, LLC.