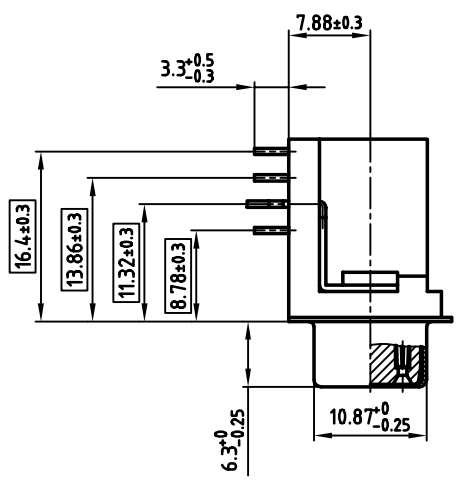
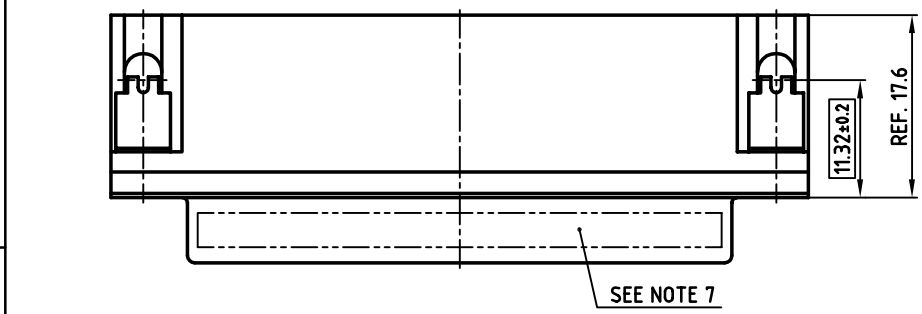
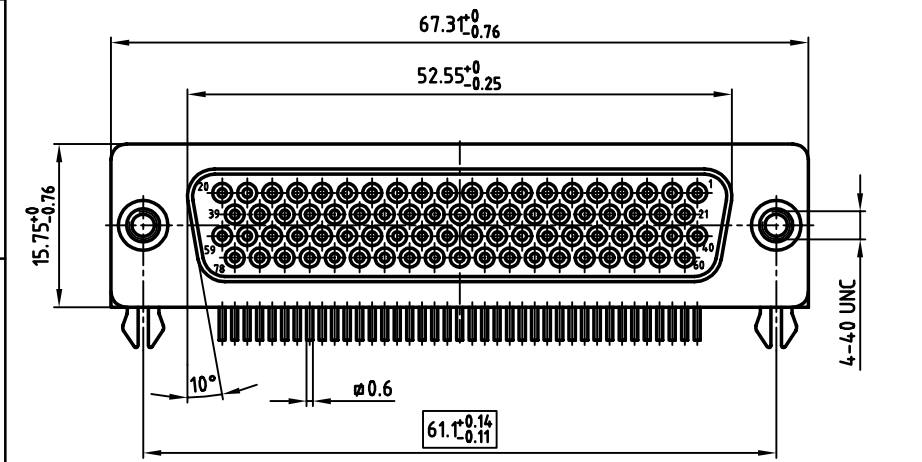


used for: D-SUB HD



- NOTES:**
- METALSHELLS: STEEL; min. 320µ" TIN
  - INSULATORS: PBT GF UL 94 V-0, BLACK
  - CONTACTS: COPPER ALLOY  
PLATING: 30µ" HARD GOLD OVER min. 50µ" NICKEL
  - THREADED INSERT: COPPER ALLOY; min. 200µ" TIN over 80µ" NICKEL
  - PCB-SNAP: COPPER ALLOY; min. 200µ" TIN over 80µ" NICKEL  
PCB-HOLE:  $\phi 3.1 \pm 0.1$ ; PCB THICKNESS 1.6mm
  - MAXIMUM TORQUE VALUE FOR THREAD: 6" LBS
  - CONNECTOR IS PART MARKED: DLH5XS8CK53X CONEC Y/WW
  - = CRITICAL DIMENSION

APPROVAL # FREIGABE # DEBLOCAGE # AUTOR/ZACON # APPROVAL

CUSTOMER APPROVAL DATE:

NAME: TITLE:

COMPANY NAME:

APPROVAL # FREIGABE # DEBLOCAGE # AUTOR/ZACON # APPROVAL

THIS DRAWING MAY NOT BE COPIED OR REPRODUCED IN ANY WAY, AND MAY NOT BE PASSED ON TO A THIRD PARTY, WITHOUT WRITTEN PERMISSION. OWNERSHIP AND COPYRIGHT OF CONEC GmbH DO NOT ALTER CAD DRAWING BY HAND

rev.	description	date	name

tolerance		scale: 2:1
material:	SEE NOTES	
title:	<b>D-SUB HD FEMALE 90°</b> 78pos. SOLDER PIN ANGLED 0.350inch with threaded insert and clip	
dwg no:	AutoCAD 2000	DIN-A
part no:	16K1A883	3 sh:1/1
part no:	DLH5XS8CK53X	

