

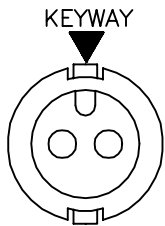
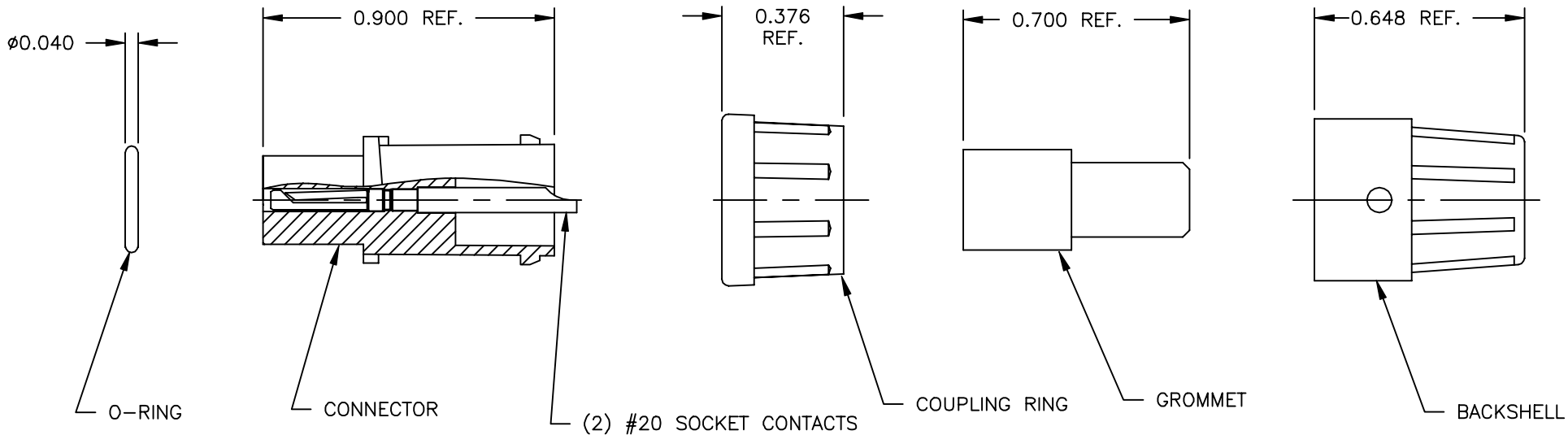
PART NUMBER: 16282-2SG-3XX

CUSTOMER PRINT

ASS'Y P/N	CABLE O.D
16282-2SG-311	0.09 - 0.14
16282-2SG-315	0.15 - 0.17
16282-2SG-318	0.18 - 0.20

NOTES:

1. PARTS TO BE BULK PACKED.
2. CONTACTS TO BE INSERTED INTO CABLE CONNECTOR W/SOLDER CUP FACING KEYWAY (12:00)



FACE VIEW

CUSTOMER APPROVAL

CHECKED BY: _____

APPROVED BY: _____

DATE: _____

A	AN	02-20-04	CREATED DRAWING PER DOR: 04-E149JC
REV.	INIT.	DATE	DESCRIPTION
<small>ALL INFORMATION ILLUSTRATED IS THE PROPERTY OF CONXALL CORPORATION. UNAUTHORIZED DUPLICATION OR DISTRIBUTION OF THIS DOCUMENT IS PROHIBITED.</small>			<small>ORIG. DRAWN BY: AN</small> <small>DATE: 02-19-04</small>
<small>ALL UNITS ARE IN FEET, INCHES, FRACTION OF INCHES AND DECIMALS.</small>			
<small>UNLESS OTHERWISE SPECIFIED TOLERANCES: 3 PLACE DECIMALS ±.005 ANGLES ±1° FRACTIONS ±1/16</small>			
<small>▷ = CRITICAL CHARACTERISTIC FLAG PER SPEC. XXXX</small>			<small>601 E. WILDWOOD VILLA PARK, IL 60181</small> <small>TITLE: CONNECTOR KIT (2) #20 SOCKET CONTACTS MICRO-CON-X</small> <small>CUSTOMER: STANDARD PRODUCT</small>
SCALE	SIZE	SHEET	
NTS	A	1 OF 1	
FILE:	DIRECTORY:	PART NUMBER:	REV.
16282-2SG-3XX	CATALOG	16282-2SG-3XX	A