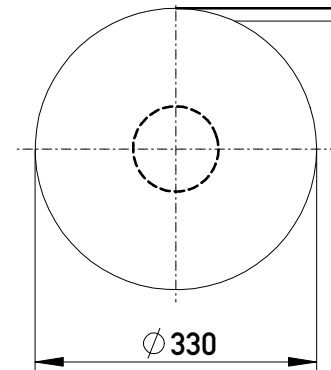
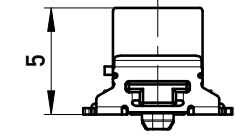
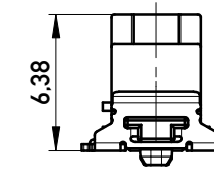


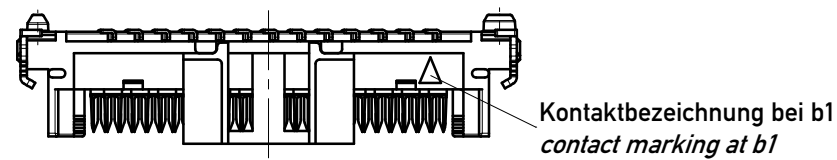
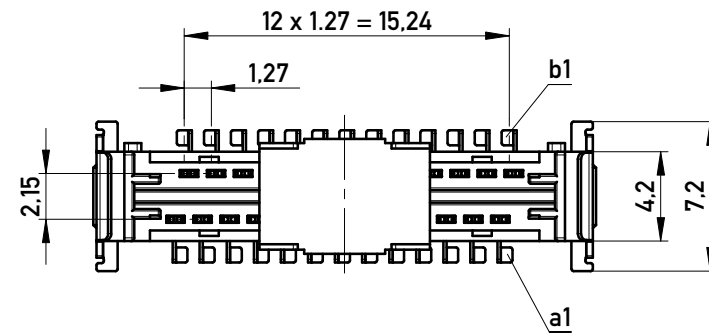
Verpackt im Gurt in Anlehnung an DIN IEC 60286-3  
 Tape on Reel Packaging according to DIN IEC 60286-3  
 Verpackungseinheit: 600 Stück  
 Packaging unit: 600 pcs



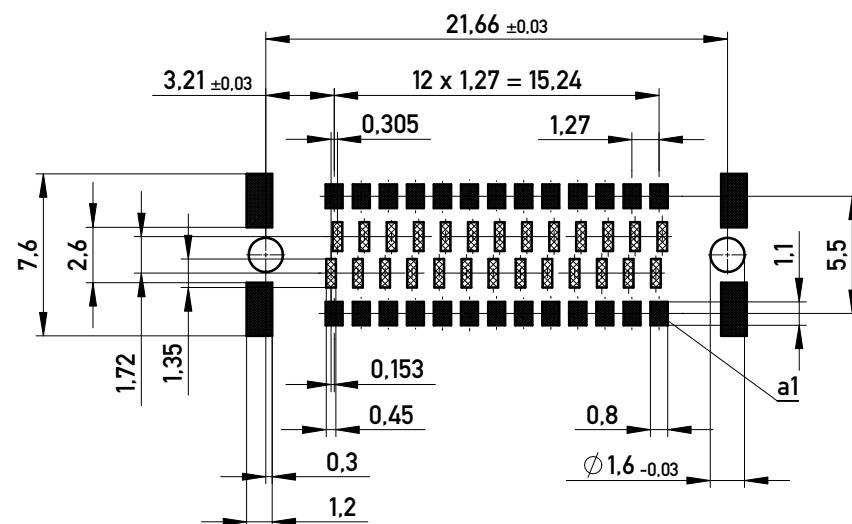
Drahtführung vorverrastet wire guide loose mounted  
 Drahtführung verpresst wire guide pressed on



Drahtführungen nicht im Lieferumfang enthalten!  
 wire guides are not included in delivery!  
 Ident-Nr. für Drahtführungen (für 600 Teile): 244632  
 part-no. for wire guides (for 600 parts): 244632

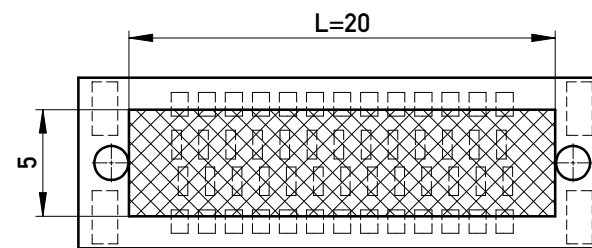


Leiterplatten-Layout Vorschlag für SMT  
 PCB-Layout Proposal for SMT



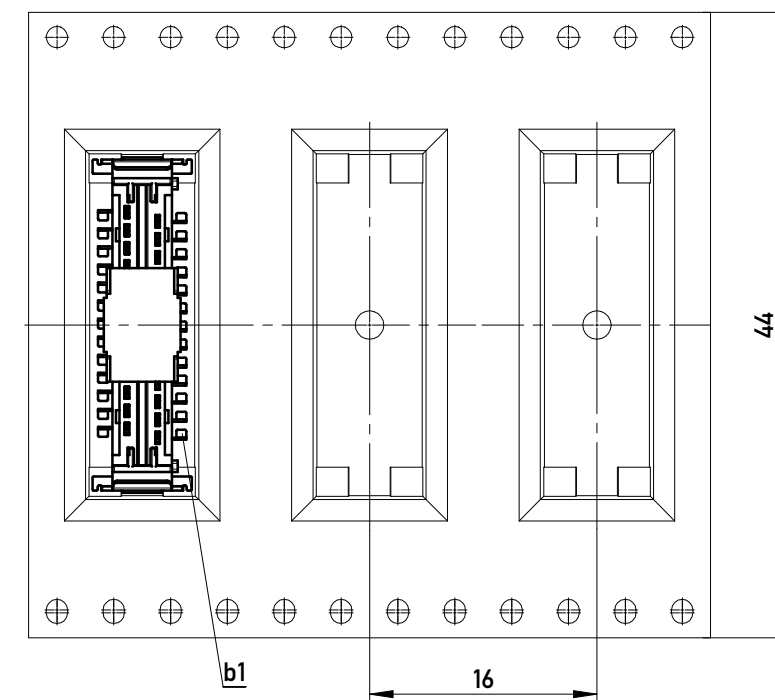
Sperrfläche  
 Restricted area

Leiterplatten-Layout Rückseite  
 PCB-Layout Back Side



Freifläche Lx 5mm auf der Leiterplatten-Unterseite  
 für das Einpresswerkzeug. Keine Bauteile plazieren  
 in diesem Bereich.  
 PCB back side space Lx5mm  
 for press tool. Do not place any  
 parts in this space.

Abspulrichtung - Reel off Direction



Information:	Tolerances	 All Dimensions in mm	Scale	3:1
	All rights reserved. Only for Information. To ensure that this is the latest version of this drawing, please contact one of the ERNI companies before using.		Designation <b>1,27 DRC board on IDC 26-polig          26-contacts</b>	
Subject to modification without prior notice. Drawing will not be updated.		 www.ERNI.com	<b>244629</b>	
c	18.01.2017			
Index	Date			I A3
			Class	SMCIDC

Copyright by ERNI Production GmbH & Co. KG  
 Proprietary notice pursuant to ISO 16016 to be observed.