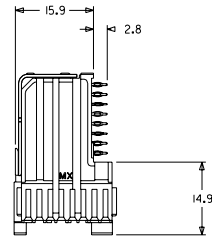
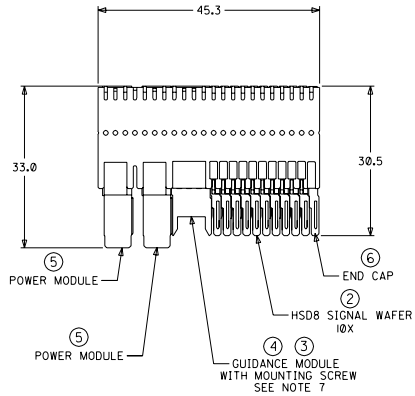
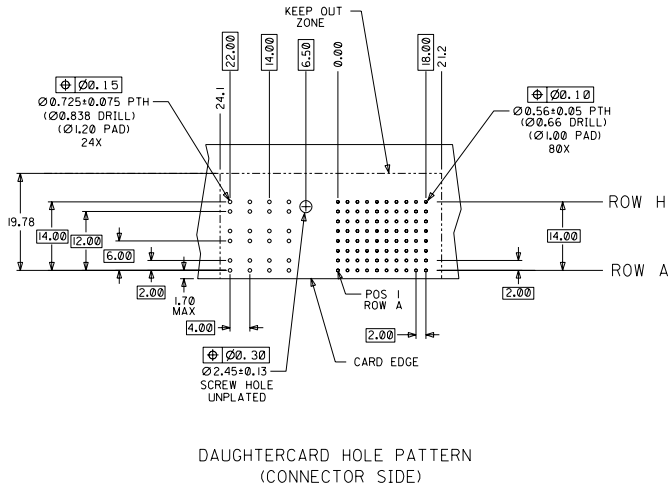
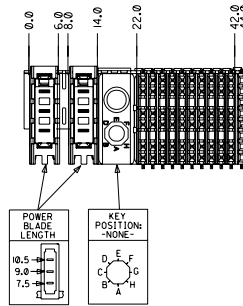


CUSTOMER: STARENT



NOTES: (UNLESS OTHERWISE SPECIFIED)

- MATERIALS: HOUSING - LIQUID CRYSTAL POLYMER (LCP), GLASS-FILLED, UL94V-0, BLACK, TERMINALS - HIGH PERFORMANCE COPPER ALLOY, STIFFENER - STAINLESS STEEL.
- FINISH: SELECTIVE GOLD (Au) IN CONTACT AREA, 0.00076mm MINIMUM THICKNESS; SELECTIVE TIN/LEAD (Sn/Pb) ON PCB TAILS, NICKEL (Ni) OVERALL.
- REFER TO MOLEX PRODUCT SPECIFICATION PS-74031-999 FOR PERFORMANCE SPECIFICATIONS.
- REFER TO MOLEX DOCUMENT SD-74681-002 FOR ADDITIONAL DETAIL ON THE HSD8 SIGNAL WAFER.
- REFER TO MOLEX DOCUMENT SD-74037-006 FOR ADDITIONAL DETAIL ON THE GUIDANCE MODULE.
- REFER TO MOLEX DOCUMENT SD-74026-002 FOR ADDITIONAL DETAIL ON THE POWER MODULE.
- MOUNTING SCREWS WILL BE BAGGED WITH EACH CONNECTOR.
- PARTS ARE PACKAGED IN TUBES PER PK-70873-5041.



ITEM	PART NUMBER	DESCRIPTION	QTY
1	74046-0045	STIFFENER	1
2	74681-0001	HSD8 SIGNAL WAFER	10
3	74037-0008	POLARIZING/GUIDE MODULE	1
4	73726-0000	GUIDE MODULE MNTG SCREW	1
5	74026-8123	POWER MODULE	2
6	74038-1001	END CAP	1

STARENT PART NO.: 121-00-0061

ADDED PART NO. EC NO. UDT2002-1338 CHKD: ATP 02/05/06 CHKD: LAURX 02/05/06 APPR: BIXLER 02/05/06	QUALITY SYMBOLS MAJOR CRITICAL	GENERAL TOLERANCES: (UNLESS SPECIFIED)		SCALE 2 : 1	DESIGN UNITS mm <input type="checkbox"/> INCH <input type="checkbox"/>	DIMENSIONS: mm <input type="checkbox"/> INCH <input type="checkbox"/>	SHT	REV			
		4 PLACES ± 0.00 $\pm .00$	3 PLACES ± 0.00 $\pm .00$	2 PLACES ± 0.00 $\pm .00$	1 PLACE ± 0.00 $\pm .00$	ANGULAR: $\pm 2^\circ$	DRAFT WHERE APPLICABLE MUST REMAIN WITHIN DIMENSIONS	CAD FILENAME SD-74680-058	MATERIAL NO. 746800058	DRAWING NO. SD-74680-058	SHEET NO. 1 OF 1
REV	DESCRIPTION	DRAWN BY & DATE ATP 01/09/18		CHECKED BY & DATE LAURX 01/09/18		APPROVED BY & DATE BIXLER 01/09/18		TITLE: 8 ROW HSD DAUGHTERCARD ASSEMBLY SALES DRAWING		MOLEX INCORPORATED	
THIS DRAWING CONTAINS INFORMATION THAT IS PROPRIETARY TO MOLEX INCORPORATED AND SHOULD NOT BE USED WITHOUT WRITTEN PERMISSION.											