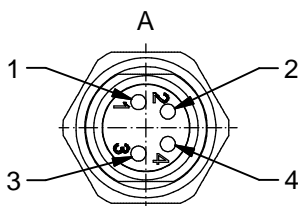


**Contact assignment:**

- 1 — brown
- 3 — blue
- 4 — black



**Contact assignment:**

- 1 — brown
- 2 — white
- 3 — blue
- 4 — black



**Technical specification:**

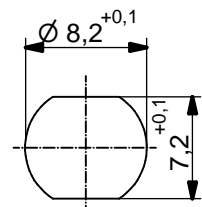
Rated voltage: IEC 61076-2-104	3pos 4pos 60 V 30V
Current rating: IEC 61076-2-104	3pos 4pos 3A at 40°C 3A at 40°C
Insulation resistance: IEC 60512	>=100 MΩ
Pollution degree: IEC 60664-1	3/2
Degree of protection: IEC 60529	IP 67, in mated condition
Temperature range: IEC 60664-1	-30°C ... +80°C
Mating cycles: IEC 60512-9a	>=100

**Materials:**

Contact:	CuZn
Contact plating:	Nickel, gold plated
Contact carrier:	PA6, UL 94
Sealing:	NBR
Socket housing:	CuZn, nickel plated
Grouting:	Polyurethane-resin, UL 94

**Installation specification:**

Recommended torque:	0,6 - 0,8 Nm
Conec installation tool:	Torque wrench: 36-000200 Insert across flats 10: 36-000270



Minimum wall thickness 1,5mm, alternativ panel cut-out d=8,2

Part no:	Description:	Pos	Length L:	Wire:
42-01034	SAL - 8 - FSH3 - 0,2	3	0,2m	AWG 24 PVC, UL
42-xxxxx	SAL - 8 - FSH3 - ...	3	x	
42-01035	SAL - 8 - FSH4 - 0,2	4	0,2m	
42-xxxxx	SAL - 8 - FSH4 - ...	4	x	

DO NOT ALTER CAD DRAWING BY HAND Directive 2002/95/EC RoHS compliant	Index: c 20.12.11 dbu Ä4186 data sheet revised	dim. in mm	title: <b>Male socket M8x1 with wire,          backmounting</b>									
	tolerance of wire: L ≤ 0,5m: L + 20mm L > 0,5m: L + 4%	<table border="1"> <tr> <td></td> <td>date</td> <td>name</td> </tr> <tr> <td>drawn</td> <td>27.10.09</td> <td>Burschik</td> </tr> <tr> <td>appd.</td> <td>27.10.09</td> <td>Schmidt</td> </tr> </table>			date	name	drawn	27.10.09	Burschik	appd.	27.10.09	Schmidt
		date	name									
	drawn	27.10.09	Burschik									
appd.	27.10.09	Schmidt										
general tolerance: 0 ± 0,50mm 0,0 ± 0,25mm 0,00 ± 0,10mm		part no: see table										
THIS DRAWING MAY NOT BE COPIED OR REPRODUCED IN ANY WAY, AND MAY NOT BE PASSED ON TO A THIRD PARTY WITHOUT WRITTEN PERMISSION. OWNERSHIP AND COPYRIGHT OF CONEC GmbH												