

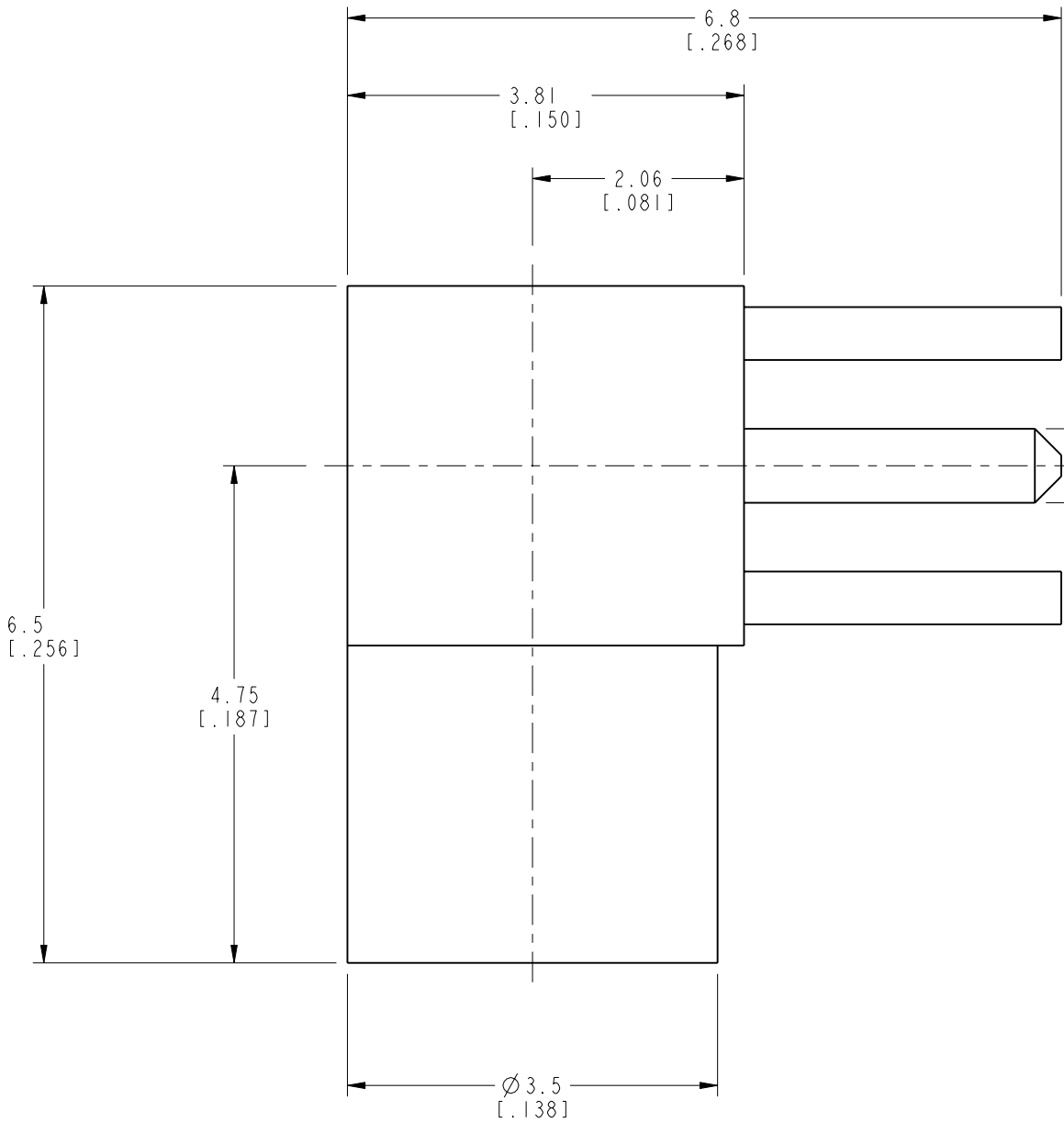
NOTES:

- I. MATERIALS AND FINISHES:  
BODIES - BRASS, GOLD PLATED  
CONTACT - BERYLLIUM COPPER, GOLD PLATED  
INSULATORS - PTFE, NATURAL

THIRD ANGLE PROJ. 

REVISIONS

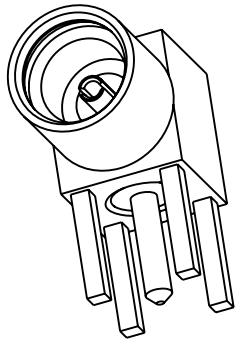
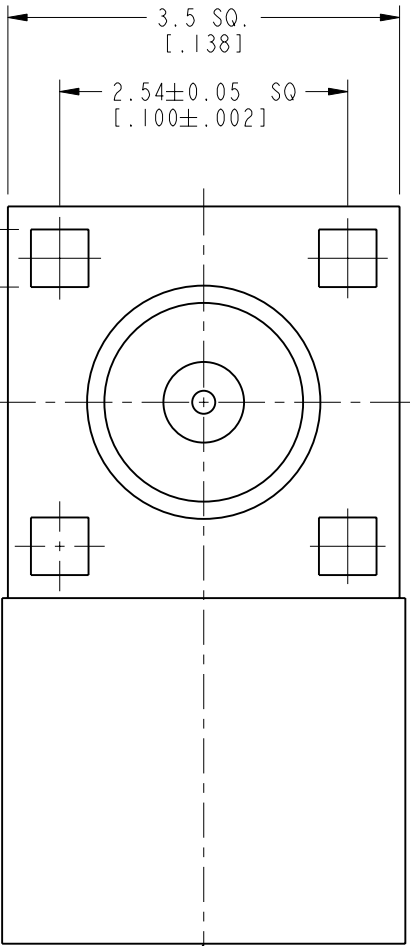
REV	DESCRIPTION	DATE	ECO	APPR
A	ENGINEERING RELEASE	7/25/97	42082	BCG/
B	ADD MOUNTING HOLE REF	1/27/06	45895	CPM
C	MOUNTING HOLES (5) WERE Ø.031	3/6/06	45920	CPM
D	RELEASE IN ARFA, UPDATE DRAWING	04-Jan-13	49376	DH
E	BODY, INSULATOR AND CONTACT WERE CHANGED	22-Dec-14	50315	SH



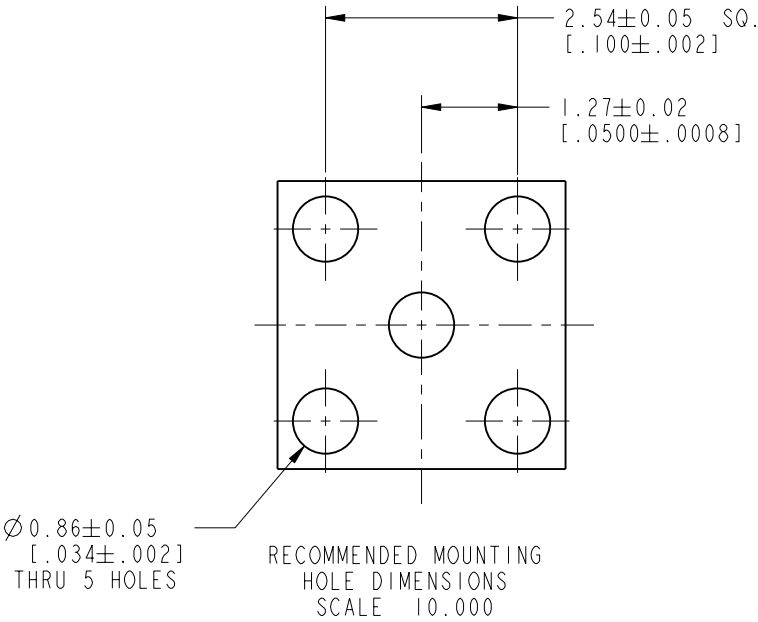
0.51±0.05 SQ.  
[.020±.002]

Ø 0.71±0.05  
[.028±.002]

MICROMATE (MMCX)  
JACK INTERFACE



SCALE 5.000



RECOMMENDED MOUNTING  
HOLE DIMENSIONS  
SCALE 10.000

## CUSTOMER OUTLINE DRAWING

ALL OTHER SHEETS ARE FOR INTERNAL USE ONLY

UNLESS OTHERWISE SPECIFIED, DIMENSIONS ARE IN METRIC AND TOLERANCES ARE:  
<0.5mm ± 0.05mm 0.5 - 6mm ±0.1mm 6 - 30mm ±0.2mm 30 - 120mm ± 0.3mm ANGLES ±1°

NOTICE - These drawings, specifications, or other data (1) are, and remain the property of Amphenol corp. (2) must be returned upon request; and (3) are confidential and not to be disclosed to any person other than those to whom they are given by Amphenol Corp. the furnishing of these drawings, specifications, or other data by Amphenol Corp., or to any other person to anyone for any purpose is not to be regarded by implication or otherwise in any manner licensing, granting rights to permitting such holder or any other person to manufacture, use or sell any product, process or design, patented or otherwise, that may in any way be related to or disclosed by said drawings, specifications, or other data.

MATERIAL

DRAWN  
TANGOR

DATE  
22-Dec-14

ENGINEER  
B.GLEISSNER

DATE  
04-Mar-97

REFERENCE  
EAR 966287-0  
615X-1447-100  
GEN# ASSYF4\_MMCX

APPROVED  
S.HSIEH

DATE  
22-Dec-14

CAD FILE

FINISH

TITLE  
MICROMATE JACK,  
RIGHT ANGLE,  
PCB MOUNT

SCALE: 15.0:1.0 SHEET 2 OF 2

DWG SIZE  
B

REV  
E

Amphenol RF

www.amphenolrf.com

DRAWING NO. 908-24100

ITEM NO. 908-24100

PART NO. 908-24100