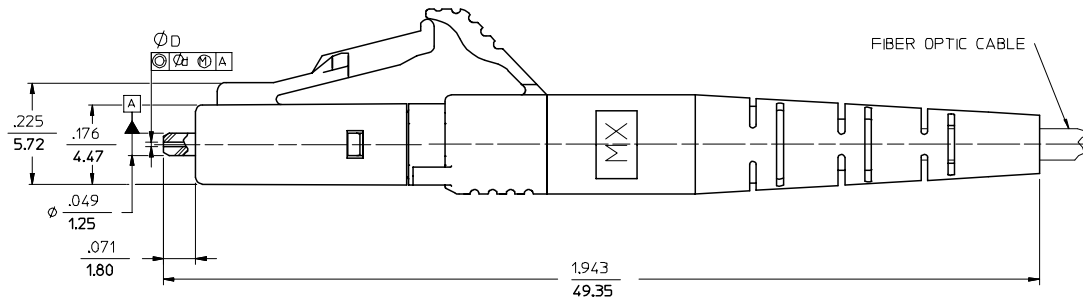
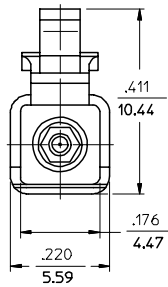


	13	12	11	10	9	8	7	6	5	4	3	2	1
	CONNECTOR P/N	ØD (µm)	Ød (µm)	BOOT COLOR	CABLE DESCRIPTION & Ø (mm)	CABLE TYPE							
J	86024-2000	125.50	1.0	WHITE	SMPLEX 1.6	SINGLE MODE							
	86024-2300				SMPLEX 2.0								
	86024-2350	127.00	3.0	WHITE	ZIFCORD 1.6	MULTIMODE							
	86024-3000				SMPLEX 1.6								
I	86024-3320	125.00	1.0	WHITE	SMPLEX 2.0	SINGLE MODE							
	86024-3300				ZIFCORD 1.6								
	86024-3310	126.00	0.5	WHITE	SMPLEX 1.6	MULTIMODE							
	86024-3390				SMPLEX 2.0								
H	86024-4000	125.25	1.0	WHITE	SMPLEX 1.6	SINGLE MODE							
	86024-4300				ZIFCORD 1.6								
	86024-4301	125.10-125.50	0.5	GRAY	SMPLEX 1.6	MULTIMODE							
	86024-5000				SMPLEX 2.0								
G	86024-5300	125.51-125.90	1.0	WHITE	ZIFCORD 1.6	SINGLE MODE							
	86024-5310				SMPLEX 1.6								
	86024-3700	125.00	0.5	WHITE	SMPLEX 2.0	MULTIMODE							
	86024-6000				SMPLEX 1.6								
F	86090-4250	125.00	1.0	WHITE	SMPLEX 2.0	SINGLE MODE							
	86090-4260				ZIFCORD 1.6								
	86090-4270	125.25	0.5	WHITE	SMPLEX 1.6	MULTIMODE							
	86090-4280				SMPLEX 2.0								
E	86090-2900	125.50	1.0	WHITE	ZIFCORD 1.6	SINGLE MODE							
	86090-2930				SMPLEX 1.6								
	86090-2990	125.00	0.5	GRAY	ZIFCORD 1.6	MULTIMODE							
	86090-4100				SMPLEX 1.6								
D	86090-4130	125.00	1.0	WHITE	SMPLEX 2.0	SINGLE MODE							
	86090-6100				ZIFCORD 1.6								
	86090-6130	125.25	0.5	WHITE	SMPLEX 1.6	MULTIMODE							
	86090-6110				SMPLEX 2.0								
C	86090-6135	126.00	1.0	WHITE	ZIFCORD 1.6	SINGLE MODE							
	86024-3100				SMPLEX 2.0								
B													
A													



NOTES:

- DUST CAPS ARE NOT SHOWN BUT INCLUDED.
 - ALL DIMENSIONS ARE GIVEN IN $\frac{\text{INCHES}}{\text{mm}}$, UNLESS OTHERWISE SPECIFIED.
- △ P/N 86024-4301, 86024-3310 AND 86024-5310 ARE BULK PACKED.



FC NO: MF2006-0228 DRW: KATARZ I ENE 2005/10/10 CHKD: 2005/10/10 APPR: J GUMIN 2005/10/11	QUALITY SYMBOLS ▽=0 ▽=0	GENERAL TOLERANCES (UNLESS SPECIFIED)		DIMENSION STYLE		SCALE	DESIGN UNITS	THIRD ANGLE PROJECTION
		mm	INCH	IN/MM	INCH	4:1	INCH	
M	DESCRIPTION	4 PLACES	± ---	± ---	DRAWN BY	DATE	TITLE	
		3 PLACES	± ---	± ---	BG	10.13.99	LC CONNECTOR	
		2 PLACES	± ---	± ---	CHECKED BY	DATE	MATERIAL NO.	
		1 PLACE	± ---	± ---	YB	10.13.99	DOCUMENT NO.	
		ANGULAR ±1/2°		APPROVED BY	DATE	SHEET NO.		
				SM	10.13.99	1 OF 1		
DRAFT WHERE APPLICABLE MUST REMAIN WITHIN DIMENSIONS		SEE TABLE		MATERIAL NO.		DOCUMENT NO.		SHEET NO.
				C		860RR-RRRRCD		1 OF 1
THIS DRAWING CONTAINS INFORMATION THAT IS PROPRIETARY TO MOLEX INCORPORATED AND SHOULD NOT BE USED WITHOUT WRITTEN PERMISSION								