



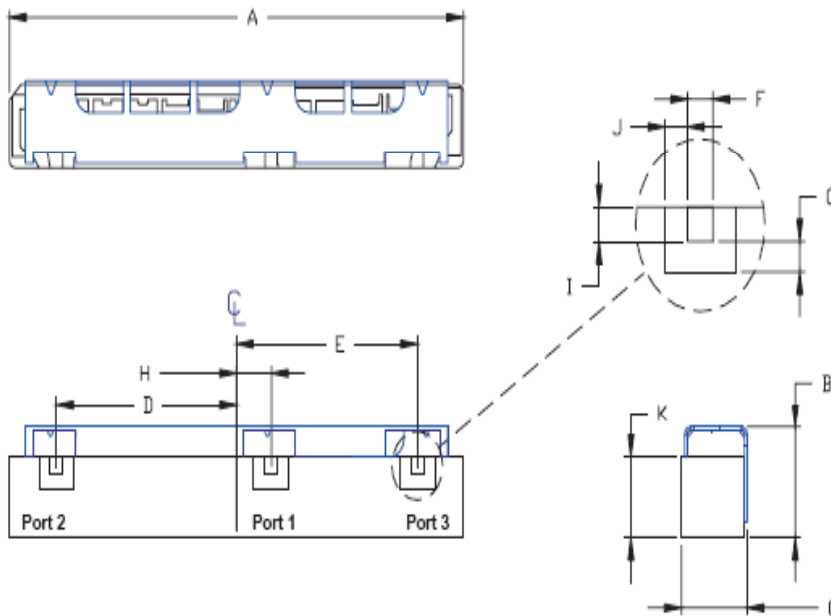
<u>Characteristics</u>	<u>Band 1</u>	<u>Band 2</u>
<b>Passband:</b>	1710-1760 MHz	2105-2155 MHz
<b>Bandwidth:</b>	50 MHz	50 MHz
<b>Passband Return Loss:</b>	12 dB	12 dB
<b>Passband Insertion Loss:</b>	1.3 dB	1.3 dB
<b>Passband Ripple:</b>	.50 dB	.50 dB
<b>Input / Output Impedance:</b>	50 Ohms	50 Ohms
<b>Isolation:</b>	50 dB	50 dB
<b>Power Handling:</b>	3 W max	3 w max

<u>Mechanical</u>	
<b>Mounting Method:</b>	SMT
<b>Dimensions:</b>	40.5 x 6.3 x 5 mm

<u>Environmental</u>	
<b>Operating Temperature:</b>	-40 to +85 deg.C
<b>Storage Temperature:</b>	-50 to +90 deg.C

This product is RoHs compliant.

### Outline Drawing:



Dim	Nominal (mm)	Tolerance (mm) +/- or max
A	40.5	Max.
B	7.8	Max.
C	6.3	Max.
D	16.17	0.13
E	16.27	0.13
F	1.14	0.13
G	1.02	0.13
H	3.14	0.13
I	1.14	0.13
J	1.02	0.13
K	5.00	Max.



**ANATECH ELECTRONICS INC**  
RF & Microwave Filters & Products

# 1900 MHz Diplexer

**Part Number: AM1735-2130D992**



## Response Plot:

