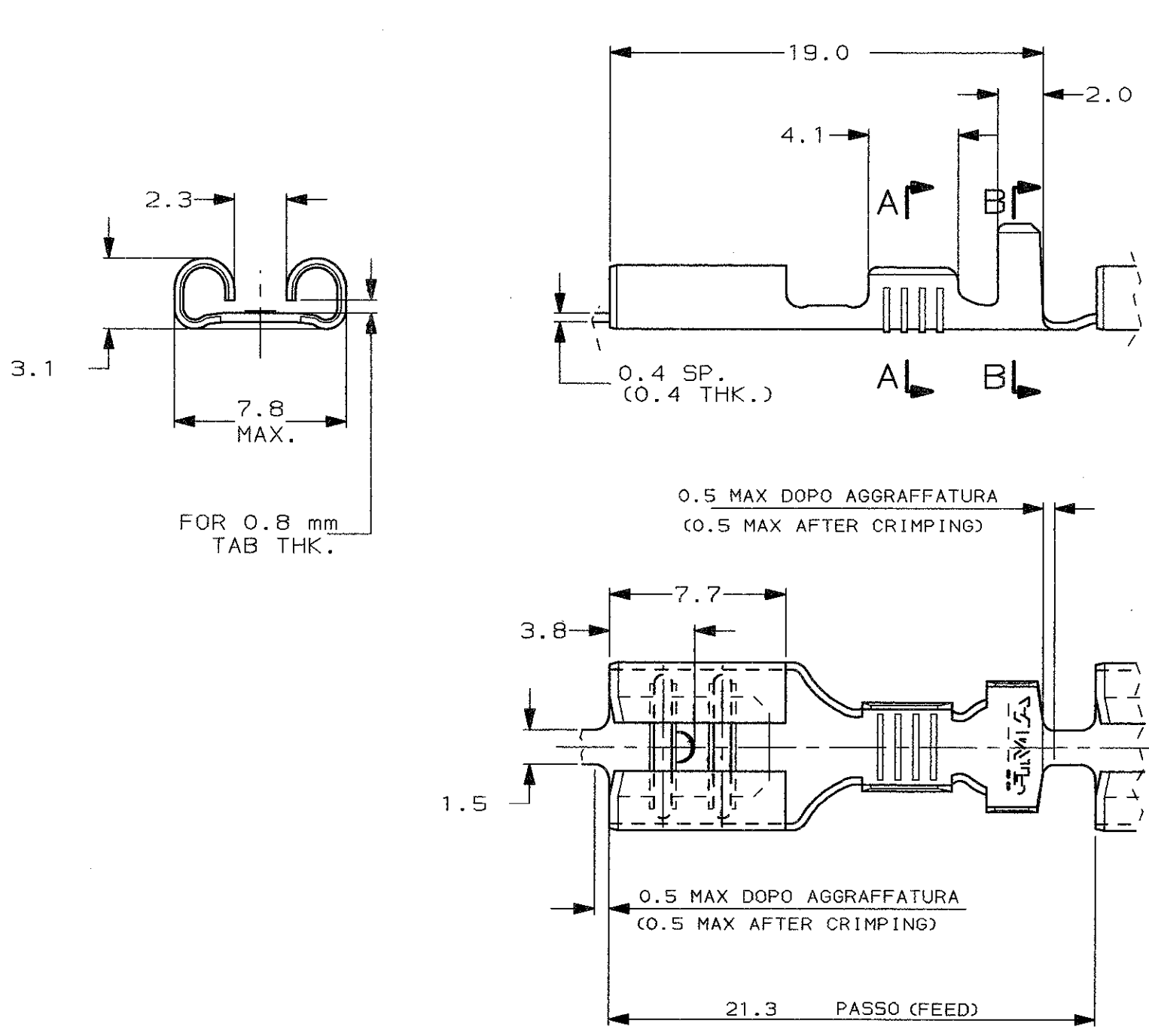


SCALA NON IMPEGNATIVA
(DO NOT SCALE)
DIMENSIONI IN mm
(DIMENSIONS IN mm)

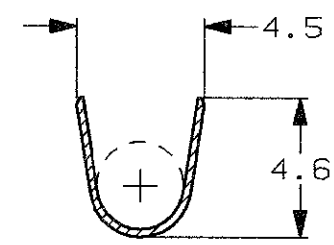
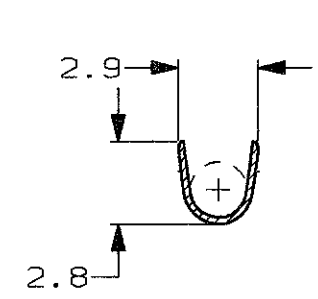
METRIC

THIRD ANGLE
PROJECTION



SEZIONE A-A
(SECTION A-A)

SEZIONE B-B
(SECTION B-B)



- 1) BOBINATI SU BOBINA SPECIALE (7000 PEZZI/BOBINA)
(REELED ON SPECIAL REEL (7000 PCS/REEL))
- 2) SPECIFICA DI PRODOTTO 108-20019.
(PRODUCT SPEC. 108-20019).
SPECIFICA DI AGGRAFFATURA 114-20023.
(APPLICATION SPEC. 114-20023).

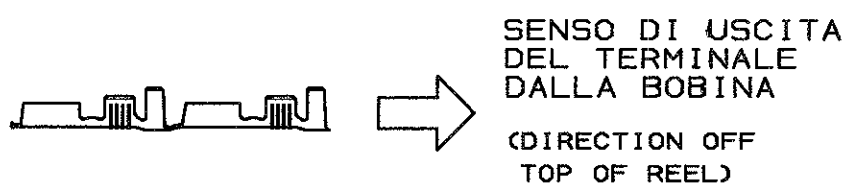
-	1	NUDO (UNPLATED)	OTTONE (BRASS)	280000-7	AA
-	1	STAGNATO (TIN PLTD)	OTTONE (BRASS)	280000-6	AA
PEZZO SCIOLTO P/N (LOOSE PIECE P/N)	NOTE	FINITURA / COLORE (FINISH / COLOUR)	MATERIALE (MATERIAL)	NUMERO (PART NUMBER)	REV.

CUSTOMER DWG. FOR REFERENCE ONLY DISEGNO PER CLIENTE SOLO PER RIFERIMENTO

THIS DRAWING IS UNPUBLISHED RELEASE FOR PUBLICATION 19

TOLLERANZE: SE NON DIVERSAMENTE SPECIFICATO (TOLERANCES: UNLESS OTHERWISE SPECIFIED)	DIAM. ISOLANTE (INS. DIA. RANGE)	RANGO FILO (WIRE RANGE)	SCALA (SCALE)
± 0.3	2.2-3.3 mm	0.3-0.8 mm ²	4:1
ANGOLI (ANGLES)	TE Connectivity		
DIS. 4 LUGLIO 96 (DR.) A. FROLA	DESCRIZIONE (DESCRIPTION) FASTON® Connector		
CONT. 4 LUGLIO 96 (CHK) C. TARTARI	.250" sr. REC. CONTACT		
LOC. SIZE	NUMERO (DWG NO)	REV.	FOGLIO (SHEET)
I A3	C-280000	AB1	1 DI (OF) 1

STATO DI FORNITURA -SCALA 1:1
(SUPPLYING CONDITION -SCALE 1:1-)



DISTRIBUZIONE (PRINT DIST.)

AB1	REVISED PER ECO-11-005140	RK	31MAR11	APP. (APP.)
REV. (REV.)	REVISIONI (REVISION RECORD)	DIS. (DR.)	DATA (DATE)	