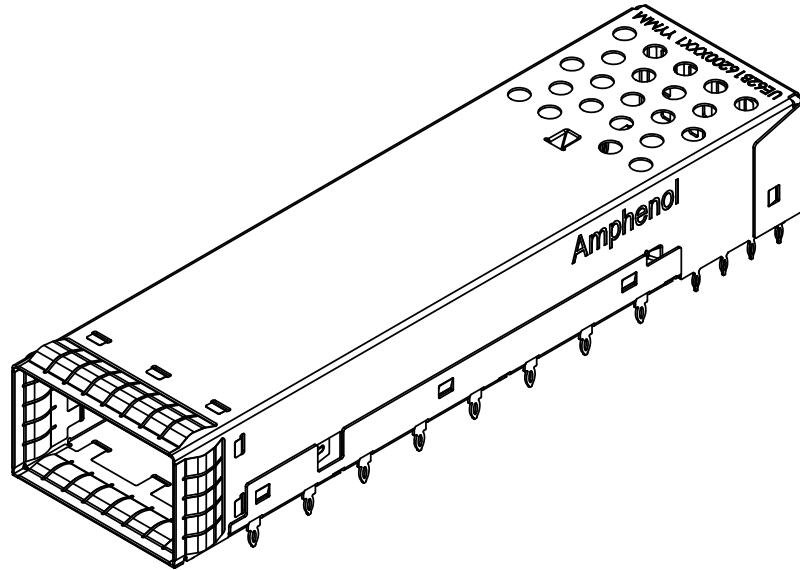


| REVISIONS | | | | |
|-----------|-----|---------------------------|-----------|----------|
| REV. | ECN | DESCRIPTION | DATE | APPROVED |
| A | | PROPOSAL | JUL 04,19 | J.SI |
| B | | UPDATE THE NOTES ON PAGE4 | JUL 31,19 | J.SI |
| C | | UPDATE THE PCB DIMENSION | AUG 20,19 | J.SI |



NOTES:

- 1) MATERIAL: COPPER ALLOY.
- 2) PLATING: 2.54 μ m MIN.NICKEL.
- 3) PACKAGING: TRAY PACKAGING.
- 4) COMPLIES WITH OSFP MSA .
- 5) AMPHENOL PART NUMBER:
UE62-B1620-021E1

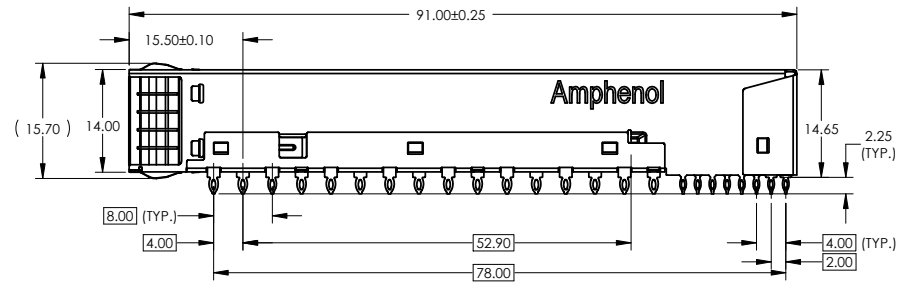
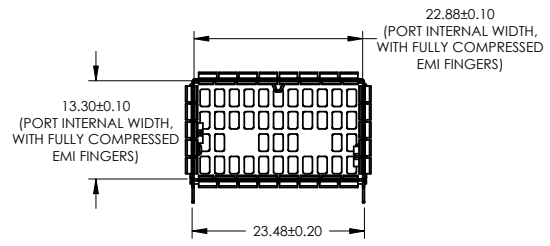
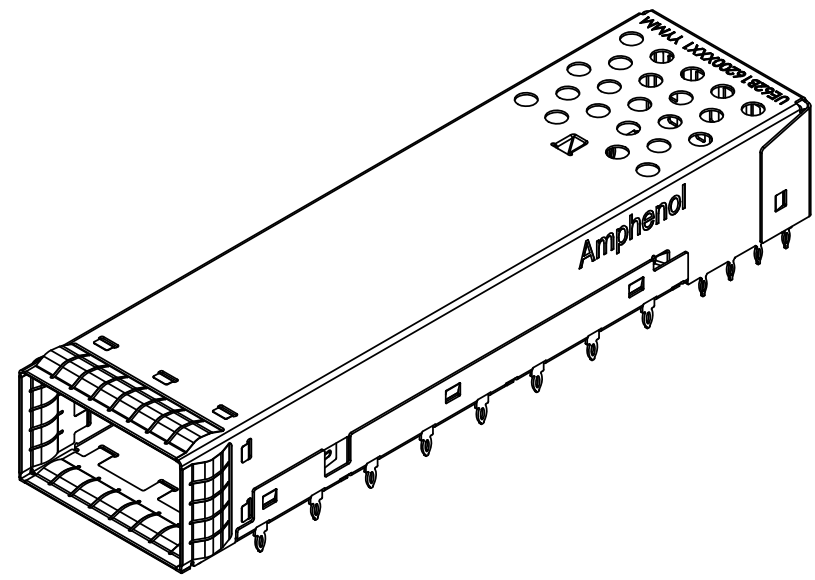
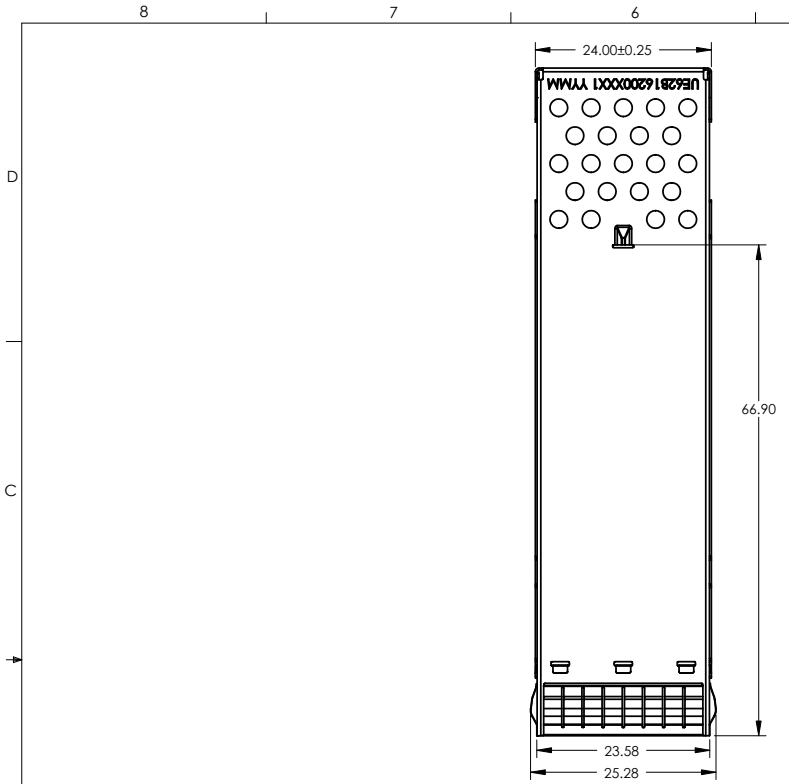


DO NOT SCALE DRAWING

THIS DOCUMENT CONTAINS PROPRIETARY INFORMATION AND SUCH INFORMATION MAY NOT BE DISCLOSED TO OTHERS FOR ANY PURPOSE OR USED FOR MANUFACTURING PUPOSES WITHOUT PERMISSION FROM AMPHENOL CANADA CORP.

| | | | | | |
|--------------------------------------------------------------------------|----------------------|---------------------|-----------|-------------------------------------------------------------------------------------------------------------|--------------------------------|
| UNLESS OTHERWISE SPECIFIED DIMENSIONS ARE IN MILLIMETERS TOLERANCES ARE: | | APPROVALS | DATE | Amphenol High Speed Interconnects <small>A Division of Amphenol Corp. www.amphenol-highspeed.com</small> | |
| DECIMALS X.X \pm 0.25 X.XX \pm 0.15 | ANGLES \pm 0.5° | DRAWN Mike. H | JUL 04,19 | TITLE 1X1 OSFP CAGE ASSEMBLY EMI ENHANCEMENT | |
| MATERIAL AND FINISH SEE NOTE 1 | | CHECKED Chigow.X | JUL 04,19 | GA APPD | |
| REF. | E APPD | | | SIZE A4 | DWG. NO. P-UE62-B1620-021E1 |
| CODE IDENT. NO. 03554 | DWG APPD J.SI | JUL 04,19 | | SCALE 1:1 | PROJECT UE62 |
| | | | | | REV. C SHEET 1 OF 6 |

| REVISIONS | | | | |
|-----------|-----|---------------------------|-----------|----------|
| REV. | ECN | DESCRIPTION | DATE | APPROVED |
| A | | PROPOSAL | JUL 04,19 | J.SI |
| B | | UPDATE THE NOTES ON PAGE4 | JUL 31,19 | J.SI |
| C | | UPDATE THE PCB DIMENSION | AUG 20,19 | J.SI |

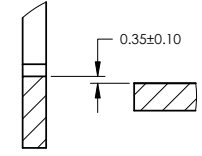
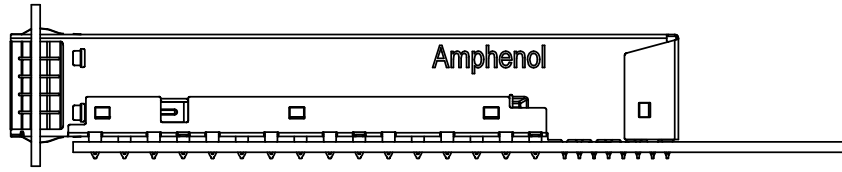


DO NOT SCALE DRAWING

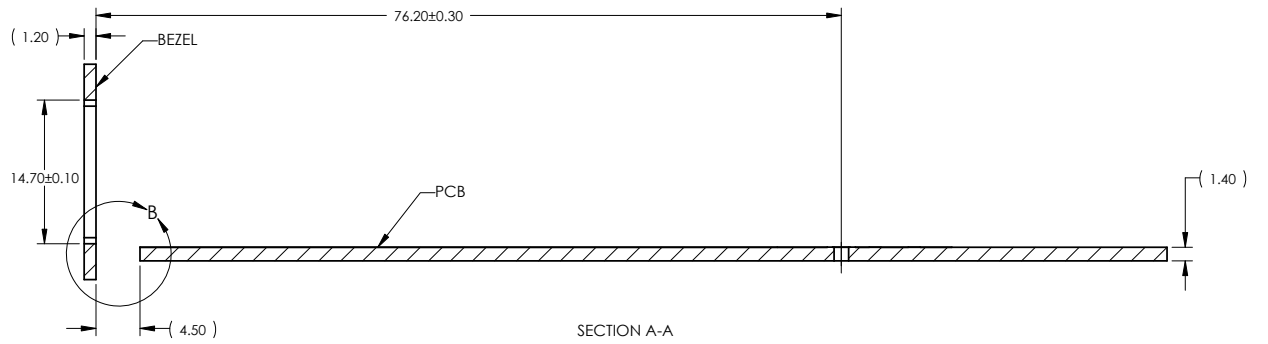
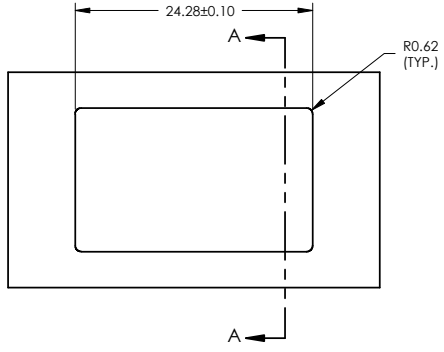
THIS DOCUMENT CONTAINS PROPRIETARY INFORMATION AND SUCH INFORMATION MAY NOT BE DISCLOSED TO OTHERS FOR ANY PURPOSE OR USED FOR MANUFACTURING PURPOSES WITHOUT PERMISSION FROM AMPHENOL CANADA CORP.

| | | | | | |
|-------------------------------------------------------------------------------------------------------------------------------------------------------------------------------------|------------------------------|-------------|--------------------------------------------------------------------------------------------------------------------|--------------------------------------------|-----------------------------|
| <small>UNLESS OTHERWISE SPECIFIED DIMENSIONS ARE IN MILLIMETERS TOLERANCES ARE:</small> DECIMALS X.X ± 0.25 ANGLES ± 0.5° <small>MATERIAL AND FINISH</small> SEE NOTE 1 | APPROVALS | DATE | Amphenol High Speed Interconnects <small>A Division of Amphenol Corp. www.amphenol-highspeed.com</small> | | |
| | DRAWN Mike. H | JUL 04,19 | | | |
| | DESIGNED | | 1X1 OSFP CAGE ASSEMBLY | | |
| | CHECKED Chigow.X | JUL 04,19 | EMI ENHANCEMENT | | |
| REF. | <small>E APPD</small> | | <small>SIZE</small> A4 | <small>DWG. NO.</small> P-UE62-B1620-021E1 | <small>REV.</small> C |
| <small>CODE IDENT. NO.</small> 03554 | <small>DWG APPD</small> J.SI | JUL 04,19 | <small>SCALE</small> 1:1 | <small>PROJECT</small> UE62 | <small>SHEET</small> 2 OF 6 |

| REVISIONS | | | | |
|-----------|-----|---------------------------|-----------|----------|
| REV. | ECN | DESCRIPTION | DATE | APPROVED |
| A | | PROPOSAL | JUL 04,19 | J.SI |
| B | | UPDATE THE NOTES ON PAGE4 | JUL 31,19 | J.SI |
| C | | UPDATE THE PCB DIMENSION | AUG 20,19 | J.SI |

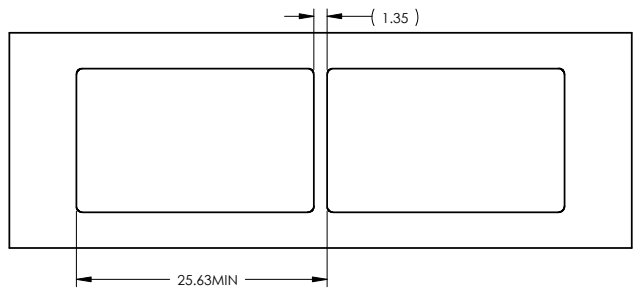


DETAIL B
SCALE 4 : 1



SECTION A-A
SCALE 2 : 1

RECOMMENDED BEZE DESIGN
FOR SINGLE SAID MOUNTING



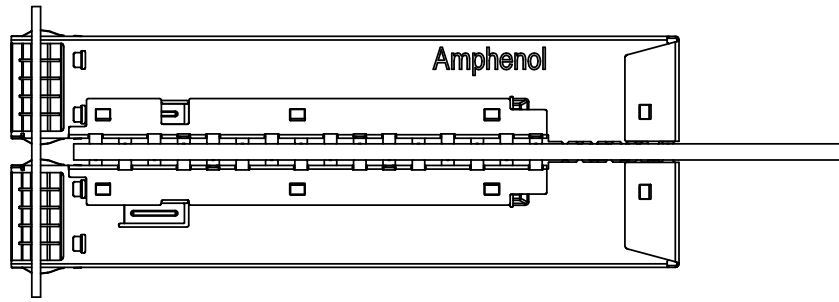
DO NOT SCALE DRAWING

THIS DOCUMENT CONTAINS PROPRIETARY INFORMATION AND SUCH INFORMATION MAY NOT BE DISCLOSED TO OTHERS FOR ANY PURPOSE OR USED FOR MANUFACTURING PUPOSES WITHOUT PERMISSION FROM AMPHENOL CANADA CORP.

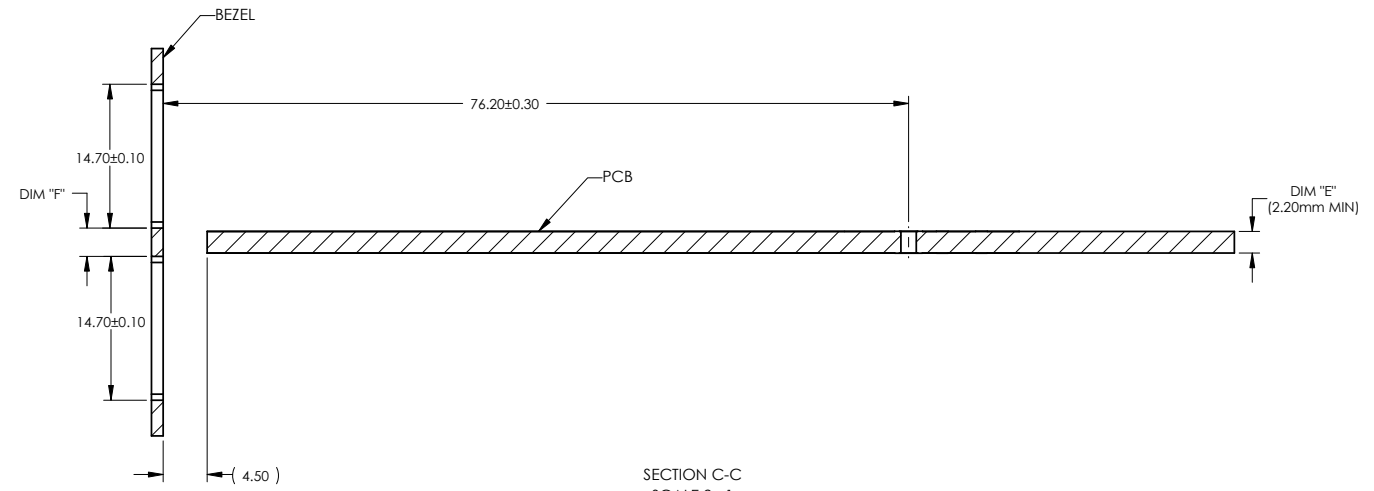
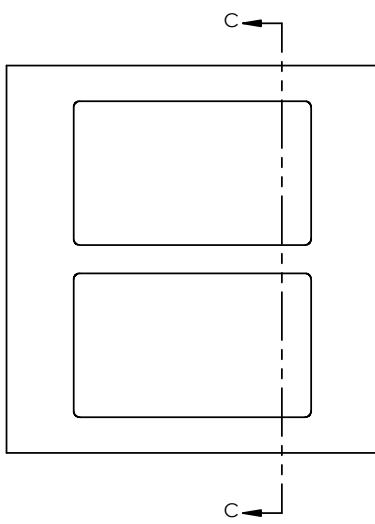
| | | | | | | | | | | | |
|--------------------------------------------------------------------------|--|---------------------|--|------------------|--|----------------------------------------------------------------------------------------|--|--------------|--|-------------------------------------------|--|
| UNLESS OTHERWISE SPECIFIED DIMENSIONS ARE IN MILLIMETERS TOLERANCES ARE: | | APPROVALS | | DATE | | Amphenol High Speed Interconnects A Division of Amphenol Corp. www.amphenol-hsi.com | | | | | |
| DECIMALS X.X ± 0.25 X.XX ± 0.15 | | ANGLES ± 0.5° | | DRAWN Mike. H | | JUL 04,19 | | TITLE | | 1X1 OSFP CAGE ASSEMBLY EMI ENHANCEMENT | |
| MATERIAL AND FINISH SEE NOTE 1 | | CHECKED Chigow.X | | DESIGNED | | JUL 04,19 | | QA APPD | | REV. C | |
| REF. | | E APPD | | SCALE | | 1:1 | | PROJECT | | UE62 SHEET 3 OF 6 | |
| CODE IDENT. NO. 03554 | | DWG APPD J.SI | | JUL 04,19 | | SCALE 1:1 | | PROJECT UE62 | | SHEET 3 OF 6 | |

8 7 6 5 4 3 2 1

| REVISIONS | | | | |
|-----------|-----|---------------------------|-----------|----------|
| REV. | ECN | DESCRIPTION | DATE | APPROVED |
| A | | PROPOSAL | JUL 04,19 | J.SI |
| B | | UPDATE THE NOTES ON PAGE4 | JUL 31,19 | J.SI |
| C | | UPDATE THE PCB DIMENSION | AUG 20,19 | J.SI |



NOTE:
 PANEL CUTOUT SIZES PER OSFP MSA SPEC. FOR BELLY TO BELLY MOUNTING, DIM "E" (PCB THICKNESS) IS 2.20 mm MIN. DIM "F" RELATED TO DIM "E". FOR DIM "F" = DIM "E" + 0.70 mm. THE PANEL CUTOUT 14.70 mm MIGHT BE INCREASED UP TO 15.10 mm IN ORDER TO ACCOMMODATE PCB TOLERANCE.



SECTION C-C
 SCALE 2 : 1

RECOMMENDED BEZE DESIGN
 (BELLY TO BELLY CAGE MOUNTING)

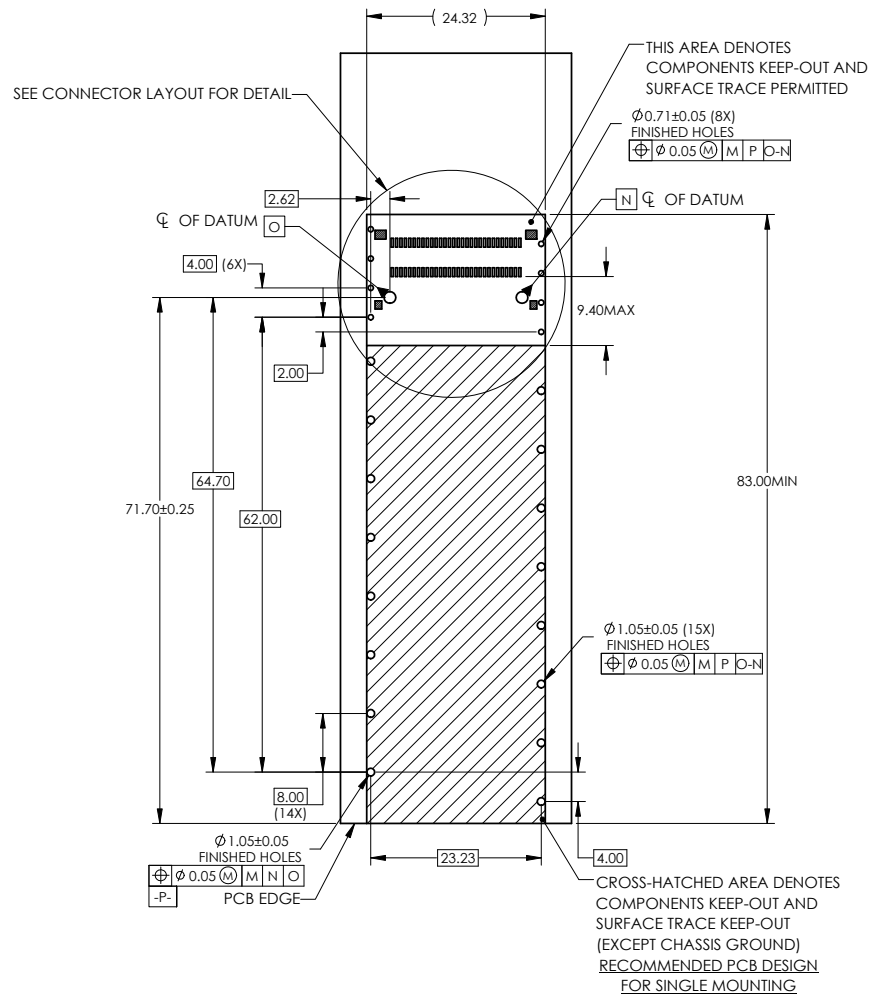
DO NOT SCALE DRAWING

THIS DOCUMENT CONTAINS PROPRIETARY INFORMATION AND SUCH INFORMATION MAY NOT BE DISCLOSED TO OTHERS FOR ANY PURPOSE OR USED FOR MANUFACTURING PUPOSES WITHOUT PERMISSION FROM AMPHENOL CANADA CORP.

| | | | | | |
|-------------------------------------------------------------------------------------------------------------------------------------------------------------------|---------------|-----------|-------------------------------------------------------------------------------------------------------------|-------------------------------------------|--------------|
| UNLESS OTHERWISE SPECIFIED DIMENSIONS ARE IN MILLIMETERS TOLERANCES ARE: DECIMALS X.X ± 0.25 X.XX ± 0.15 ANGLES ± 0.5° MATERIAL AND FINISH SEE NOTE 1 | APPROVALS | DATE | Amphenol High Speed Interconnects <small>A Division of Amphenol Corp. www.amphenol-highspeed.com</small> | | |
| | DRAWN Mike. H | JUL 04,19 | TITLE | 1X1 OSFP CAGE ASSEMBLY EMI ENHANCEMENT | |
| | DESIGNED | | CHECKED Chigow.X | JUL 04,19 | |
| | QA APPD | | | | |
| REF. | E APPD | | SIZE A4 | DWG. NO. P-UE62-B1620-021E1 | REV. C |
| CODE IDENT. NO. 03554 | DWG APPD J.SI | JUL 04,19 | SCALE 1:1 | PROJECT UE62 | SHEET 4 OF 6 |

8 7 6 5 4 3 2 1

| REVISIONS | | | | |
|-----------|-----|---------------------------|-----------|----------|
| REV. | ECN | DESCRIPTION | DATE | APPROVED |
| A | | PROPOSAL | JUL 04,19 | J.SI |
| B | | UPDATE THE NOTES ON PAGE4 | JUL 31,19 | J.SI |
| C | | UPDATE THE PCB DIMENSION | AUG 20,19 | J.SI |

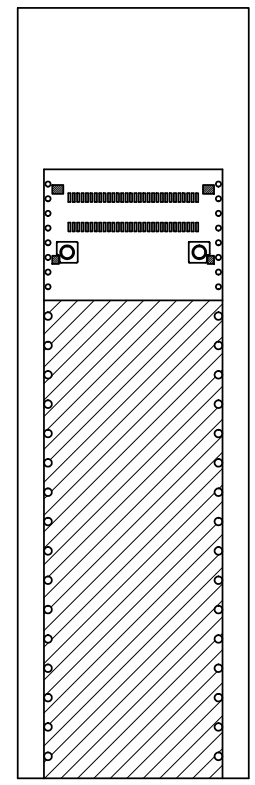
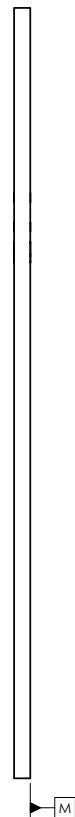
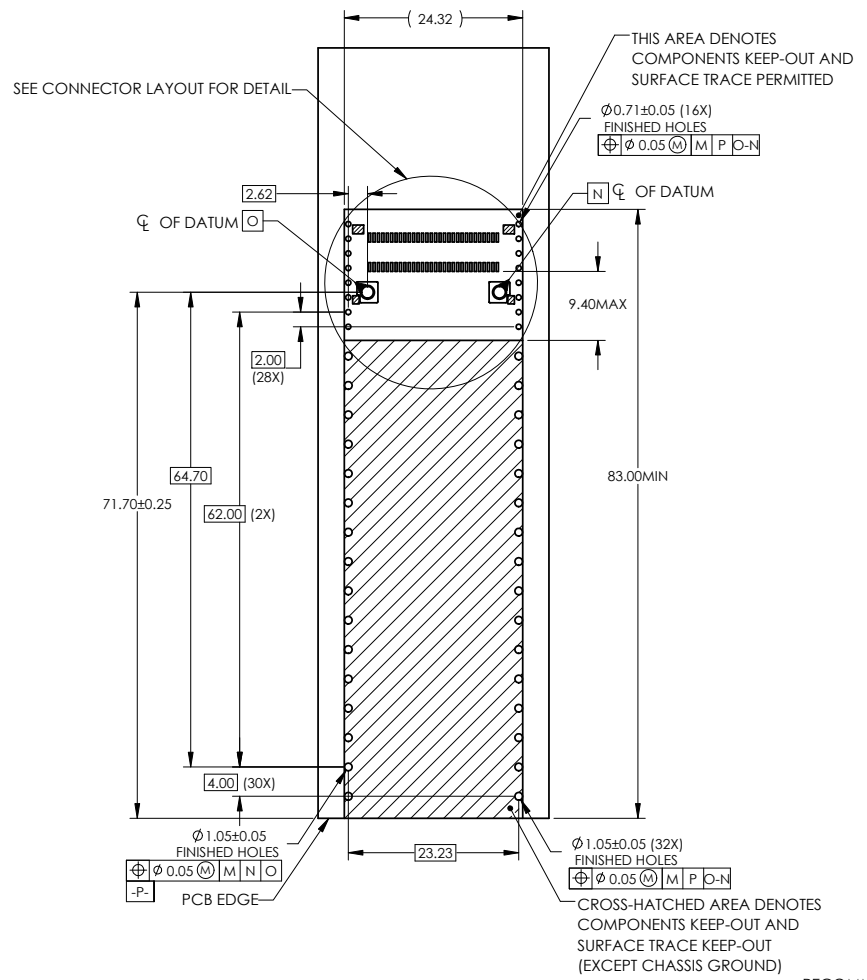


DO NOT SCALE DRAWING

THIS DOCUMENT CONTAINS PROPRIETARY INFORMATION AND SUCH INFORMATION MAY NOT BE DISCLOSED TO OTHERS FOR ANY PURPOSE OR USED FOR MANUFACTURING PURPOSES WITHOUT PERMISSION FROM AMPHENOL CANADA CORP.

| | | | | | |
|--------------------------------------------------------------------------|--------|-----------|----------|----------------------------------------------------------------------------------------------|-------------------------------------------|
| UNLESS OTHERWISE SPECIFIED DIMENSIONS ARE IN MILLIMETERS TOLERANCES ARE: | | APPROVALS | DATE | Amphenol High Speed Interconnects A Division of Amphenol Corp. www.amphenol-highspeed.com | |
| DECIMALS | ANGLES | DRAWN | Mike. H | JUL 04,19 | TITLE |
| X.X ± 0.25 | ± 0.5° | DESIGNED | | | 1X1 OSFP CAGE ASSEMBLY EMI ENHANCEMENT |
| X.XX ± 0.15 | | CHECKED | Chigow.X | JUL 04,19 | |
| MATERIAL AND FINISH | | QA APPD | | | SIZE |
| SEE NOTE 1 | | E APPD | | | DWG. NO. |
| REF. | | DWG APPD | J.SI | JUL 04,19 | P-UE62-B1620-021E1 |
| CODE IDENT. NO. | 03554 | | | SCALE | PROJECT |
| | | | | 1:1 | UE62 |
| | | | | | SHEET |
| | | | | | 5 OF 6 |
| | | | | | REV. |
| | | | | | C |

| REVISIONS | | | | |
|-----------|-----|---------------------------|-----------|----------|
| REV. | ECN | DESCRIPTION | DATE | APPROVED |
| A | | PROPOSAL | JUL 04,19 | J.SI |
| B | | UPDATE THE NOTES ON PAGE4 | JUL 31,19 | J.SI |
| C | | UPDATE THE PCB DIMENSION | AUG 20,19 | J.SI |



RECOMMENDED PCB DESIGN FOR BELLY TO BELLY MOUNTING

DO NOT SCALE DRAWING

THIS DOCUMENT CONTAINS PROPRIETARY INFORMATION AND SUCH INFORMATION MAY NOT BE DISCLOSED TO OTHERS FOR ANY PURPOSE OR USED FOR MANUFACTURING PURPOSES WITHOUT PERMISSION FROM AMPHENOL CANADA CORP.

| | | | | | |
|--------------------------------------------------------------------------------------------------------------------------------------------------------------------------------------|---------------------------------------------------------------------------|-------------------|----------------------------------------------------------------------------------------------|------------------------------|--------|
| UNLESS OTHERWISE SPECIFIED DIMENSIONS ARE IN MILLIMETERS TOLERANCES ARE: DECIMALS: X.X ± 0.25 ANGLES: ± 0.5° MATERIAL AND FINISH: SEE NOTE 1 REF. CODE IDENT. NO.: 03554 | APPROVALS DRAWN: Mike. H DESIGNED: CHECKED: Chigow.X QA APPD: | DATE JUL 04,19 | Amphenol High Speed Interconnects A Division of Amphenol Corp. www.amphenol-highspeed.com | | |
| | TITLE 1X1 OSFP CAGE ASSEMBLY EMI ENHANCEMENT | | SIZE: A4 SCALE: 1:1 | DWG. NO.: P-UE62-B1620-021E1 | REV. C |
| | E APPD: J.SI DWG APPD: J.SI | JUL 04,19 | PROJECT: UE62 | SHEET: 6 OF 6 | |