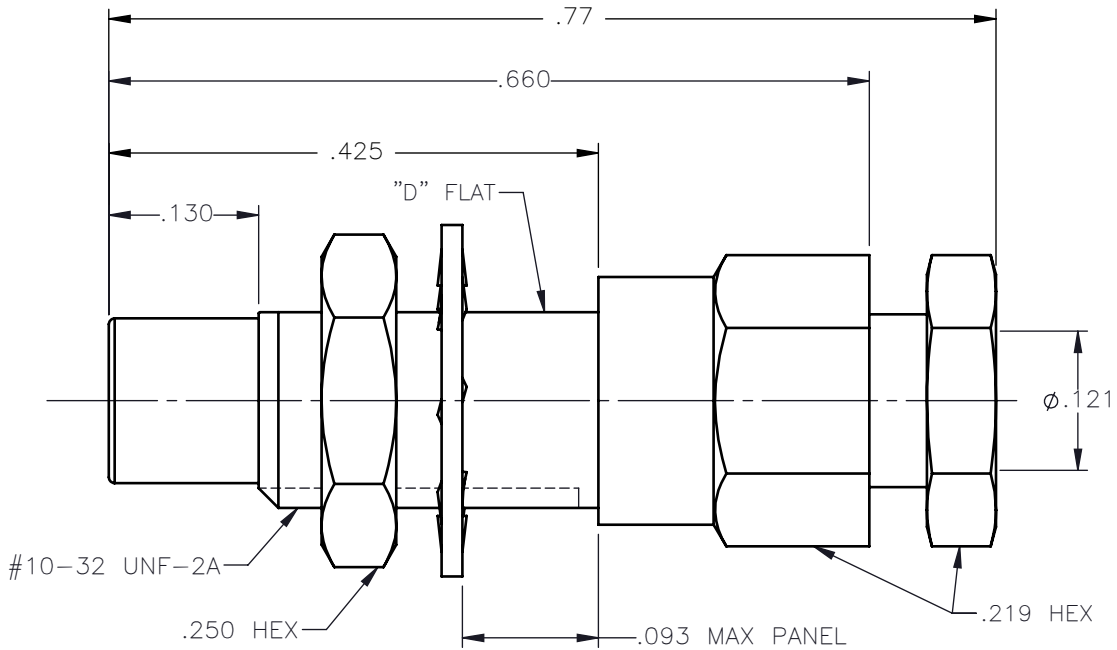


REVISIONS			
REV.	DESCRIPTION	DATE	APPROVED
A	INITIAL RELEASE	10/07/16	N.D.



NOTES:

MATERIALS:

1. INSULATORS = VIRGIN WHITE TEFLON PER ASTM D1710, GRADE 1, TYPE I, CLASS "B".
2. LOCKWASHER = PHOSPHOR BRONZE PER ASTM B139, COPPER ALLOY C53400, TEMPER H04.
3. ALL OTHER METAL PARTS = BRASS PER ASTM B16, ALLOY C36000, TEMPER H02.

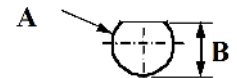
FINISHES:

1. CONTACT = GOLD PLATE PER ASTM B488-11, TYPE II, 50 $\mu$ in MIN, GRADE C, OVER 100 TO 200 $\mu$ in STRESS FREE SULFAMATE NICKEL PER AMS-QQ-290.
2. ALL OTHER METAL PARTS = GOLD PLATE PER ASTM B488-11, TYPE II, 30 $\mu$ in MIN, GRADE C OVER 100 TO 200 $\mu$ in COPPER STRIKE PER AMS 2418.




TEMPERATURE RATING: -65° C TO +165° C

VOLTAGE RATING: 250 VRMS @ SEA LEVEL

**PANEL CUT OUT**



	inches	
	Maxi	mini
<b>A</b>	<b>.198</b>	<b>.192</b>
<b>B</b>	<b>.183</b>	<b>.177</b>

UNLESS OTHERWISE SPECIFIED DIMENSIONS ARE IN INCHES TOLERANCES ON	DWN:	DATE	 Property of Radiall This document cannot be reproduced or communicated to a third party without prior written permission of RADIALL.				
	N.D.	10/07/16					
DECIMAL	ANGLE	CHKD:	DATE	<b>SMC STRAIGHT MALE BULKHEAD JACK          SOLDER/CLAMP TYPE          FOR .086 S/R &amp; SIMILAR CABLES</b>			
		D.N.	10/07/16				
REFERENCE:	MATERIALS & FINISHES:	APVD:	DATE	SIZE	FSCM NO.	DWG NO.	REV
ORIGINATED: N.D. DATE: 10/07/16	SEE NOTES	J.M.	10/07/16	A	19505	1003-1541-010	A
				SCALE	6:1	THIRD ANGLE PROJECTION	 SHEET 1 OF 1

1003-1541-010