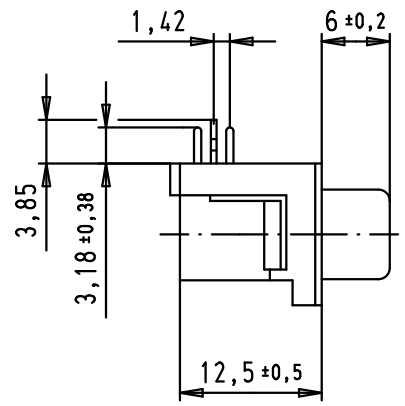
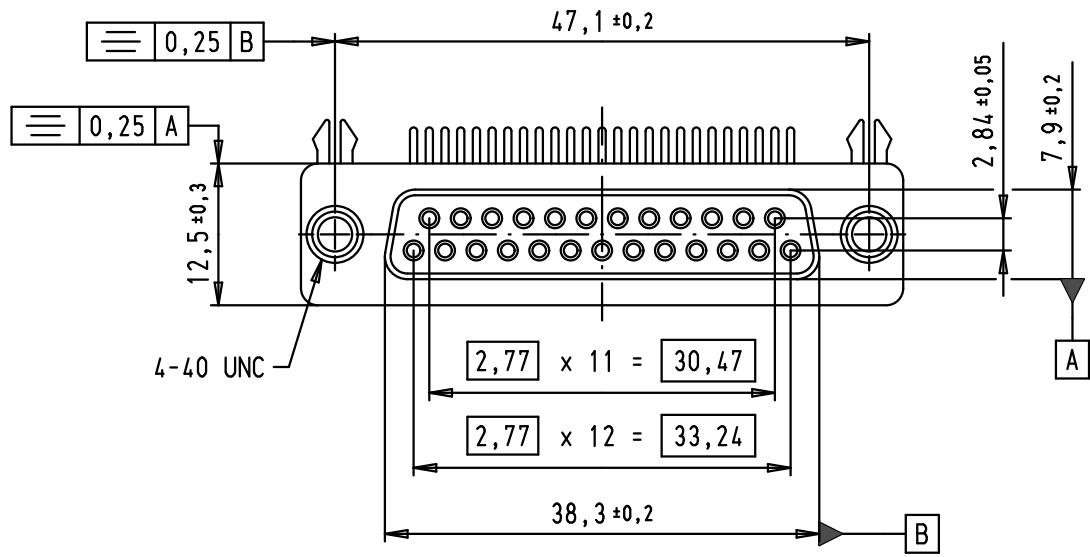


5 4 3 2 1

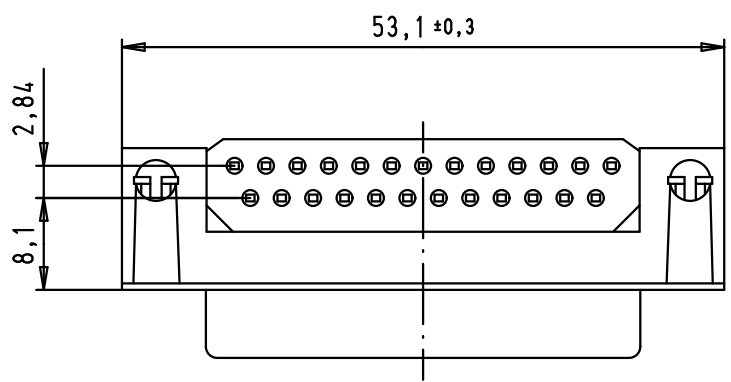
D
C
B
A

SPECIFICATIONS

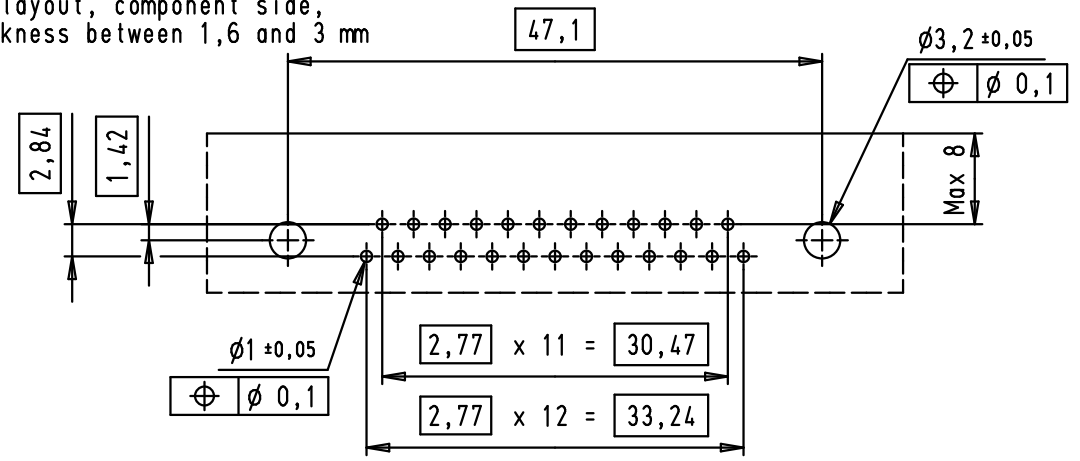
FREQUENCY (MHz)	ATTENUATION (dB)
5	1
10	2
50	4
100	4,5
500	4,5
1000	4,5



Operating voltage < 250 V AC
 Working current < 7,5 A
 Insulation resistance > 1GΩ
 Contact resistance < 15 mΩ
 Dielectric withstanding voltage 500 V AC / minute



PCB layout, component side, thickness between 1,6 and 3 mm



09 64 313 7802	PL3
Part number	Performance level

			Dot.	Name	<p>All Dim. in mm Orig. Size DIN A 4</p>
		Detail.	02/07/09	PK	
		Insp.			
		Stand.			
EC02296	06/09/10	SC	HARTING EURL F-95972 Paris		
EC00362	02/07/09	PK			
Mod.	Dot.	Name			

D-Sub, female, angled, US footprint, 25 poles, tin plated shell, solder pins, ferrite filter	Maßstab/ Scale 1,5:1
TB 09 64 313 7802	Blatt/ Page 1 / 1
Sub.	