

REV	DESCRIPTION	DATE	DWN	APR
A	NEW DRAWING PER ECO-14-007060	13MAY2014	NK	RH

BCD CODE 131

POS	#	1	2	3	4	5	6	7	8	9
C	X	X	X	X	X	X	X	X	X	X
1		X	X		X	X		X		X
2			X	X		X	X			
4				X	X	X	X			
8								X	X	

HEXADECIMAL CODE 3#1

POS	#	1	2	3	4	5	6	7	8	9	A	B	C	D	E	F
C	X	X	X	X	X	X	X	X	X	X	X	X	X	X	X	X
1		X	X	X	X	X	X	X	X	X	X	X	X	X	X	X
2			X	X		X	X		X	X		X	X		X	X
4				X	X	X	X				X	X	X	X		X
8								X	X	X	X	X	X	X	X	X

BCD COMPLEMENT CODE 137

POS	#	1	2	3	4	5	6	7	8	9
C	X	X	X	X	X	X	X	X	X	X
1	X	X	X	X	X	X	X	X	X	X
2	X	X		X	X		X	X		X
4	X	X	X						X	X
8	X	X	X	X	X	X	X	X	X	X

HEXADECIMAL COMPLEMENT CODE 3#7

POS	#	1	2	3	4	5	6	7	8	9	A	B	C	D	E	F
C	X	X	X	X	X	X	X	X	X	X	X	X	X	X	X	X
1	X	X	X	X	X	X	X	X	X	X	X	X	X	X	X	X
2	X	X		X	X		X	X		X	X		X	X		X
4	X	X	X						X	X	X					X
8	X	X	X	X	X	X	X	X	X	X	X	X	X	X	X	X

BCD PLUS BCD COMPLEMENT CODE 141

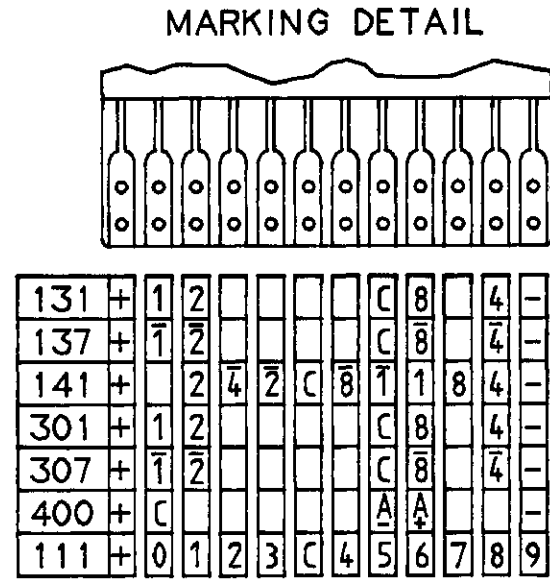
POS	#	1	2	3	4	5	6	7	8	9
C	X	X	X	X	X	X	X	X	X	X
1	X	X	X	X	X	X	X	X	X	X
2	X	X		X	X		X	X		X
4	X	X	X						X	X
8	X	X	X	X	X	X	X	X	X	X

DECIMAL CODE 111

POS	#	1	2	3	4	5	6	7	8	9
C	X	X	X	X	X	X	X	X	X	X
1	X									
2		X								
3			X							
4				X						
5					X					
6						X				
7							X			
8								X		
9									X	

CHANGE OVER SWITCH CODE 4#8

POS	C	A+	A-
+	X	X	
-	X		X
+	X	X	
-	X		X
+	X	X	
-	X		X
+	X	X	
-	X		X
+	X	X	
-	X		X

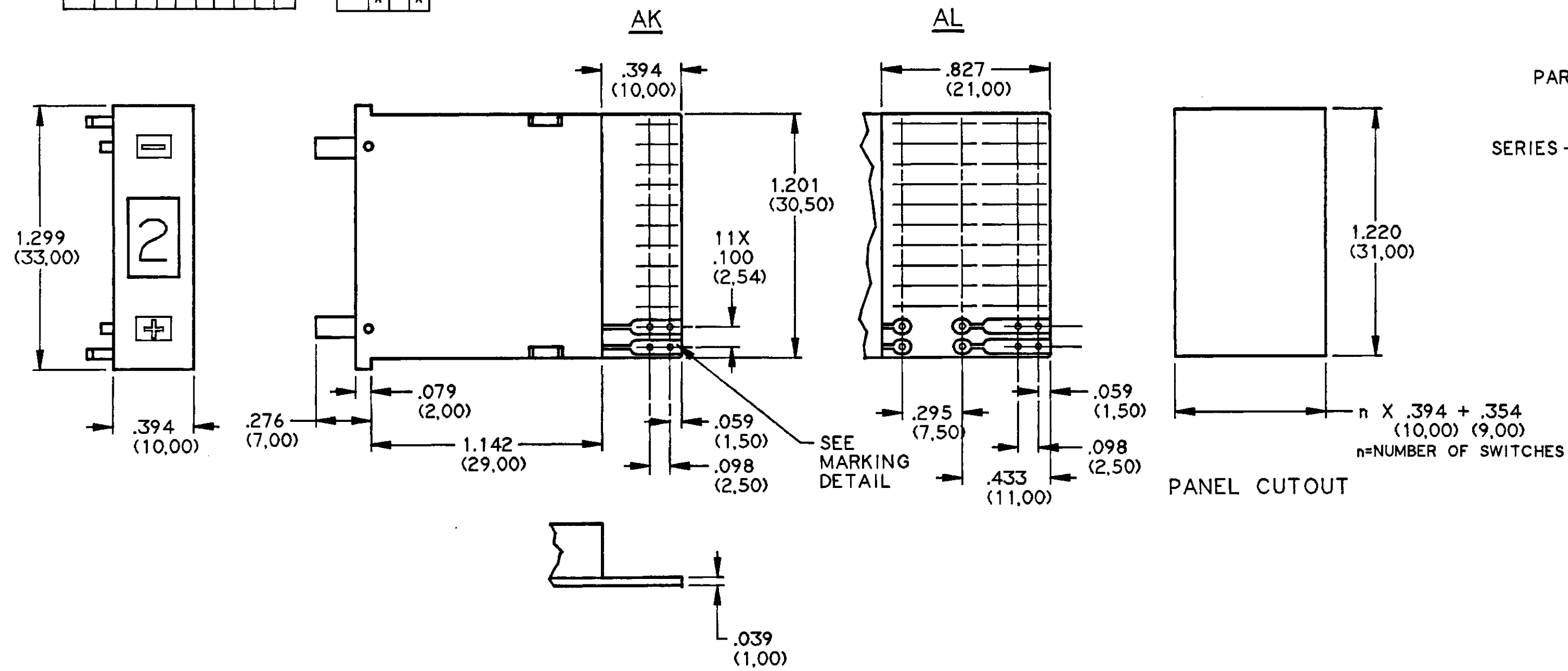


SPECIFICATIONS:

- CONTACT RATING: GOLD 0.4 VA @ 20 VDC OR AC.
- CONTACT CIRCUIT RESISTANCE: 0.20 OHM MAXIMUM.
- MECHANICAL LIFE: MORE THAN 10⁶ OPERATIONS.
- OPERATING TEMPERATURE: -20°C TO +80°C.
- ACTUATION FORCE: APPROX. 16 oz

MATERIALS:

HOUSING: HIGH TEMPERATURE THERMOPLASTIC RESIN
 BLACK MATTE FINISH
 PC BOARD: FR4 GLASS EPOXY
 PC BOARD CONTACTS AND TERMINALS: GOLD OVER NICKEL ON COPPER
 MOVING CONTACTS: GOLD OVER NICKEL ON COPPER ALLOY
 WINDOW: THERMOPLASTIC RESIN
 CHARACTER COLOR: WHITE ON BLACK BACKGROUND
 CHARACTER HEIGHT: 10/16 DIGIT .276 (7,00)/.169 (4,30)



PART NUMBER SEQUENCE

DPS10***A**

SERIES — CODE: 111 TYPE: AK AL

131
137
141
301
307
400

UNLESS OTHERWISE SPECIFIED DIMENSIONS ARE IN INCH					THIRD ANGLE PROJECTION			UNLESS OTHERWISE SPECIFIED DIMENSIONS ARE IN INCHES DO NOT SCALE PRINT		ORIGINAL DATE OF DRAWING: 10/9/92		TE Connectivity TITLE: PUSHWHEEL CODE SWITCH DPS10 SERIES	
TOLERANCES PER DIN 7168					TOLERANCES (EXCEPT AS NOTED) ANGULAR = ±1/2°			MATERIAL: SEE SPECIFICATIONS ABOVE		DRAWN: C. MORAN DATE: 10/9/92			
GREATER THAN	.020 (0,50)	.236 (6,00)	1.181 (30,00)	4.724 (120,00)	12.402 (315,00)	DECIMAL .XX = SEE TOL TABLE DECIMAL .XXX = SEE TOL TABLE DECIMAL .XXXX = SEE TOL TABLE			CHECKED: DATE:		REV. A		
LESS THAN	.236 (6,00)	1.181 (30,00)	4.724 (120,00)	12.402 (315,00)	39.370 (1000,00)	FINISH:			APPROVED: DATE: 11/10/92		PRODUCT CODE: H13		
	±.004 (±0,10)	±.008 (±0,20)	±.012 (±0,30)	±.020 (±0,50)	±.031 (±0,80)				CODE IDENT. NO. 91506		DWG. SIZE C		
									NEXT ASSY:		SCALE: 2/1 SHEET 1 OF 1		